

Current Revision Description

H - 15/12/2023

Schedule of accommodation added

| Rev | Date | Drawn By | Checked by |
|-----|------------|----------|------------|
| H | 15/12/2023 | TT | JT |
| G | 29/11/2023 | TT | JT |
| F | 01/11/2023 | TT | JT |
| E | 08/08/2023 | JH | JT |

Key

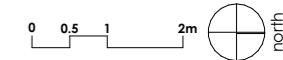
- Proposed walls
- Electric Meter
- Electric Car Charging Point
- Air Source Heat Pump
- Water butt

Accommodation Schedule

| Plots 1-2 (3-bed 5-person house) | |
|--|------------|
| Plot 1 GIA (m ²) ^a | 95 |
| Kitchen storage (m ²) ^b | 2.7 |
| Total storage (m ²) ^c | 6.4 |
| Plot 2 GIA (m ²) ^a | 95 |
| Kitchen storage (m ²) ^b | 2.7 |
| Total storage (m ²) ^c | 6.4 |
| Plots 3-4 (2-bed 4-person house) | |
| Plot 3 GIA (m ²) ^a | 81 |
| Kitchen storage (m ²) ^b | 2.5 |
| Total storage (m ²) ^c | 5.9 |
| Plot 4 GIA (m ²) ^a | 81 |
| Kitchen storage (m ²) ^b | 2.5 |
| Total storage (m ²) ^c | 5.9 |
| Plots 5-6 (1-bed 2-person maisonette) | |
| Plot 5 GIA (m ²) ^a | 51 |
| Kitchen storage (m ²) ^b | 1.8 |
| Total storage (m ²) ^c | 4.1 |
| Plot 6 GIA (m ²) ^a | 51 |
| Kitchen storage (m ²) ^b | 1.8 |
| Total storage (m ²) ^c | 4.1 |
| Plots 7-8 (2-bed 4-person house) | |
| Plot 7 GIA (m ²) ^a | 81 |
| Kitchen storage (m ²) ^b | 2.5 |
| Total storage (m ²) ^c | 7.6 |
| Plot 8 GIA (m ²) ^a | 83 |
| Kitchen storage (m ²) ^b | 2.5 |
| Total storage (m ²) ^c | 7.6 |
| Grand Total GIA (m²)^a | 618 |

Notes

- a: Gross Internal Areas measured in m² to ERHA requirements.
- b: Kitchen storage measured in m² to ERHA requirements.
- c: Total storage measured in m² excludes kitchen storage and service cupboard to ERHA requirements.
- d: Total storage measured in m² excludes kitchen and built-in wardrobe threshold and includes 0.5m² for service cupboard to NDS requirements.



project

Land at: The Oak
Smannell
Andover
SP11 6JJ

client

English Rural
Housing Association

drawing

Floor Plans Proposed (plots
1/2)

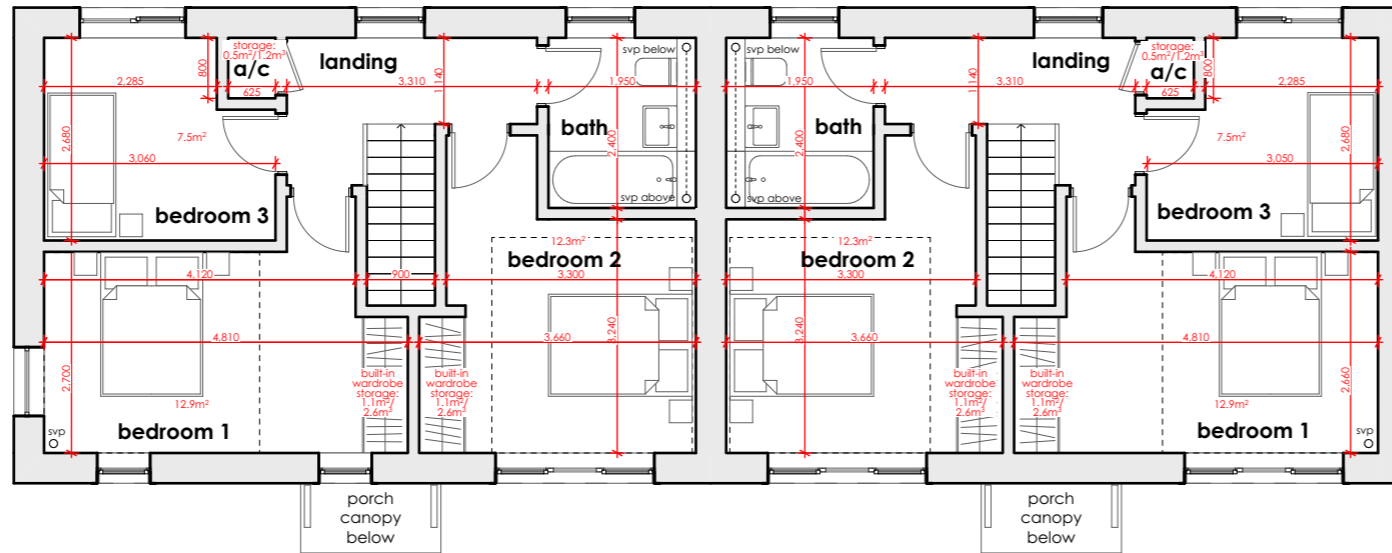
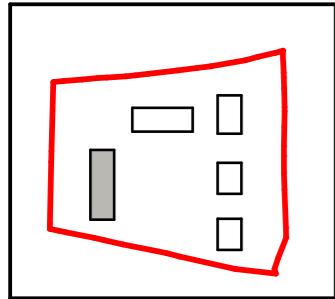
| stage | date |
|----------|------------|
| Planning | 15/12/2023 |
| scale | sheet size |
| 1:100 | A3 |
| drawn by | checked by |
| TT | JT |

2254_PR_100_H



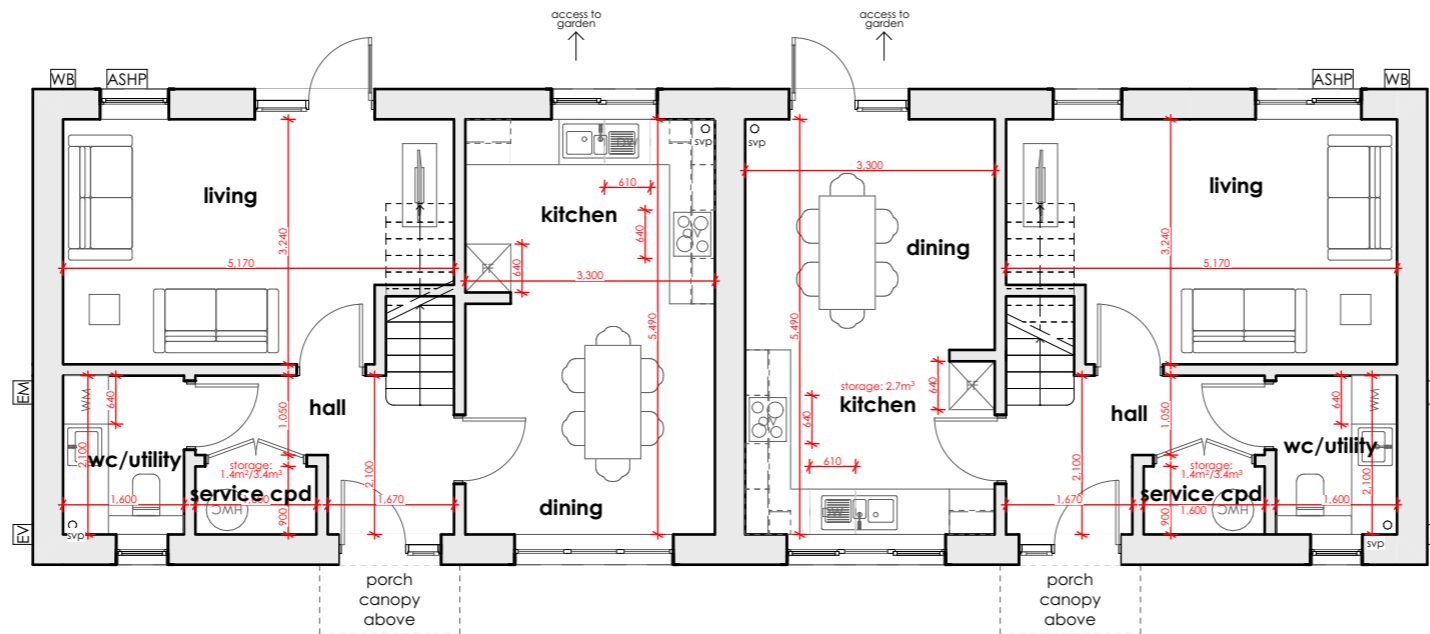
23 City Business Centre
Hyde Street
Winchester
SO23 7TA

T 01962 856255
E info@t2architects.com
www.t2architects.com



Plot 1 - First Floor Plan

Plot 2 - First Floor Plan



Plot 1 - Ground Floor Plan

Plot 2 - Ground Floor Plan