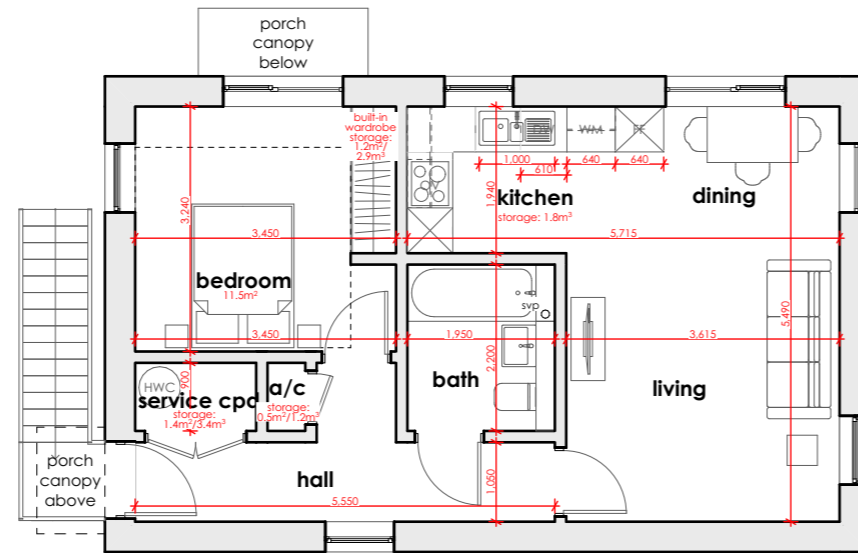
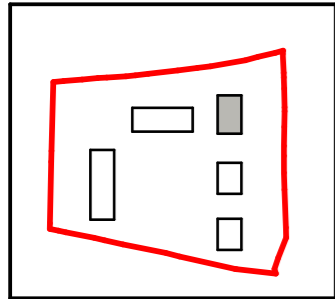
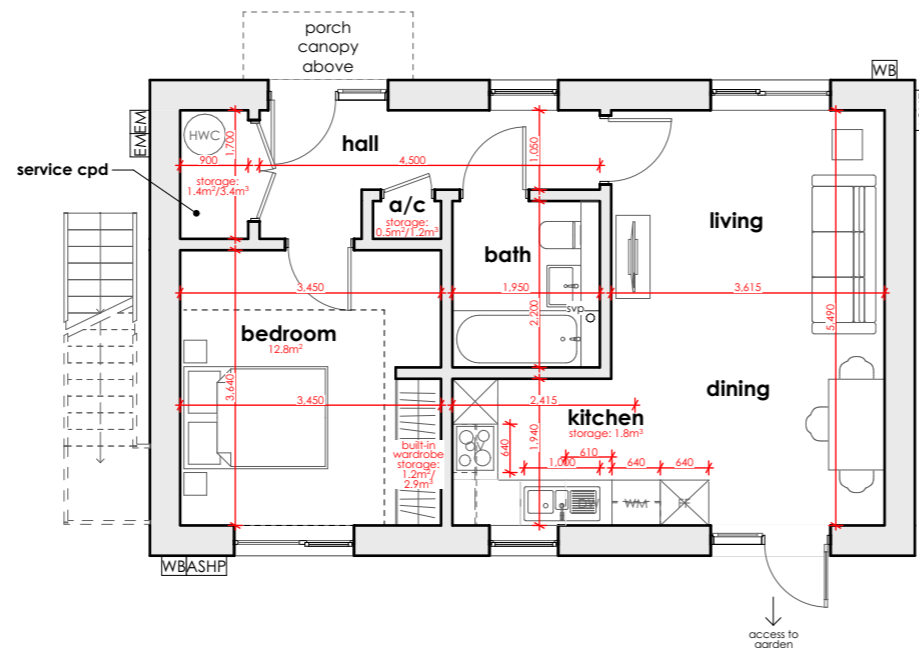


Rev	Date	Drawn By	Checked by
H	15/12/2023	TT	JT
G	29/11/2023	TT	JT
F	01/11/2023	TT	JT
E	08/08/2023	JH	JT



Plot 6 - First Floor Plan



Plot 5 - Ground Floor Plan

Key

- Proposed walls
- Electric Meter
- Electric Car Charging Point
- Air Source Heat Pump
- Water butt

Accommodation Schedule

Plots 1-2 (3-bed 5-person house)	
Plot 1 GIA (m ²) ^a	95
Kitchen storage (m ³) ^b	2.7
Total storage (m ³) ^c	6.4
Plot 2 GIA (m ²) ^a	95
Kitchen storage (m ³) ^b	2.7
Total storage (m ³) ^c	6.4
Plots 3-4 (2-bed 4-person house)	
Plot 3 GIA (m ²) ^a	81
Kitchen storage (m ³) ^b	2.5
Total storage (m ³) ^c	5.9
Plot 4 GIA (m ²) ^a	81
Kitchen storage (m ³) ^b	2.5
Total storage (m ³) ^c	5.9
Plots 5-6 (1-bed 2-person maisonette)	
Plot 5 GIA (m ²) ^a	51
Kitchen storage (m ³) ^b	1.8
Total storage (m ³) ^c	4.1
Plot 6 GIA (m ²) ^a	51
Kitchen storage (m ³) ^b	1.8
Total storage (m ³) ^c	4.1
Plots 7-8 (2-bed 4-person house)	
Plot 7 GIA (m ²) ^a	81
Kitchen storage (m ³) ^b	2.5
Total storage (m ³) ^c	7.6
Plot 8 GIA (m ²) ^a	83
Kitchen storage (m ³) ^b	2.5
Total storage (m ³) ^c	7.6
Grand Total GIA (m²)^a	618

Notes

a: Gross Internal Areas measured in m² to ERHA requirements.

b: Kitchen storage measured in m³ to ERHA requirements.

c: Total storage measured in m³ excludes kitchen storage and service cupboard to ERHA requirements.

d: Total storage measured in m³ excludes kitchen and built-in wardrobe threshold and includes 0.5m² for service cupboard to NDS requirements.



project

**Land at: The Oak
Smannell
Andover
SP11 6JJ**

client

**English Rural
Housing Association**

drawing

**Floor Plans Proposed (plots
5/6)**

stage	date
Planning	15/12/2023
scale	sheet size
1:100	A3
drawn by	checked by
TT	JT

2254_PR_120_H



23 City Business Centre
Hyde Street
Winchester
SO23 7TA

T 01962 856255
E info@t2architects.com
www.t2architects.com