

Current Revision Description

H - 15/12/2023

Schedule of accommodation added

Rev	Date	Drawn By	Checked by
H	15/12/2023	TT	JT
G	29/11/2023	TT	JT
F	01/11/2023	TT	JT
E	08/08/2023	JH	JT

**Key**

- Proposed walls
- Electric Meter
- Electric Car Charging Point
- Air Source Heat Pump
- Water butt

**Accommodation Schedule**

Plots 1-2 (3-bed 5-person house)	
Plot 1 GIA (m <sup>2</sup> ) <sup>a</sup>	95
Kitchen storage (m <sup>3</sup> ) <sup>b</sup>	2.7
Total storage (m <sup>3</sup> ) <sup>c</sup>	6.4
Plot 2 GIA (m <sup>2</sup> ) <sup>a</sup>	95
Kitchen storage (m <sup>3</sup> ) <sup>b</sup>	2.7
Total storage (m <sup>3</sup> ) <sup>c</sup>	6.4
Plots 3-4 (2-bed 4-person house)	
Plot 3 GIA (m <sup>2</sup> ) <sup>a</sup>	81
Kitchen storage (m <sup>3</sup> ) <sup>b</sup>	2.5
Total storage (m <sup>3</sup> ) <sup>c</sup>	5.9
Plot 4 GIA (m <sup>2</sup> ) <sup>a</sup>	2.6
Kitchen storage (m <sup>3</sup> ) <sup>b</sup>	2.5
Total storage (m <sup>3</sup> ) <sup>c</sup>	5.9
Plots 5-6 (1-bed 2-person maisonette)	
Plot 5 GIA (m <sup>2</sup> ) <sup>a</sup>	51
Kitchen storage (m <sup>3</sup> ) <sup>b</sup>	1.8
Total storage (m <sup>3</sup> ) <sup>c</sup>	4.1
Plot 6 GIA (m <sup>2</sup> ) <sup>a</sup>	1.9
Kitchen storage (m <sup>3</sup> ) <sup>b</sup>	1.8
Total storage (m <sup>3</sup> ) <sup>c</sup>	4.1
Plots 7-8 (2-bed 4-person house)	
Plot 7 GIA (m <sup>2</sup> ) <sup>a</sup>	81
Kitchen storage (m <sup>3</sup> ) <sup>b</sup>	2.5
Total storage (m <sup>3</sup> ) <sup>c</sup>	7.6
Plot 8 GIA (m <sup>2</sup> ) <sup>a</sup>	2.4
Kitchen storage (m <sup>3</sup> ) <sup>b</sup>	83
Total storage (m <sup>3</sup> ) <sup>c</sup>	2.5
Total storage (m <sup>3</sup> ) <sup>c</sup>	7.6
Total storage (m <sup>3</sup> ) <sup>c</sup>	2.4
<b>Grand Total GIA (m<sup>2</sup>)<sup>a</sup></b>	<b>618</b>

**Notes**

a: Gross Internal Areas measured in m<sup>2</sup> to ERHA requirements.

b: Kitchen storage measured in m<sup>3</sup> to ERHA requirements.

c: Total storage measured in m<sup>3</sup> excludes kitchen storage and service cupboard to ERHA requirements.

d: Total storage measured in m<sup>3</sup> excludes kitchen and built-in wardrobe threshold and includes 0.5m<sup>2</sup> for service cupboard to NDS3 requirements.



project  
**Land at: The Oak  
 Smannell  
 Andover  
 SP11 6JJ**

client  
**English Rural  
 Housing Association**

drawing  
**Floor Plans Proposed (plots  
 7/8)**

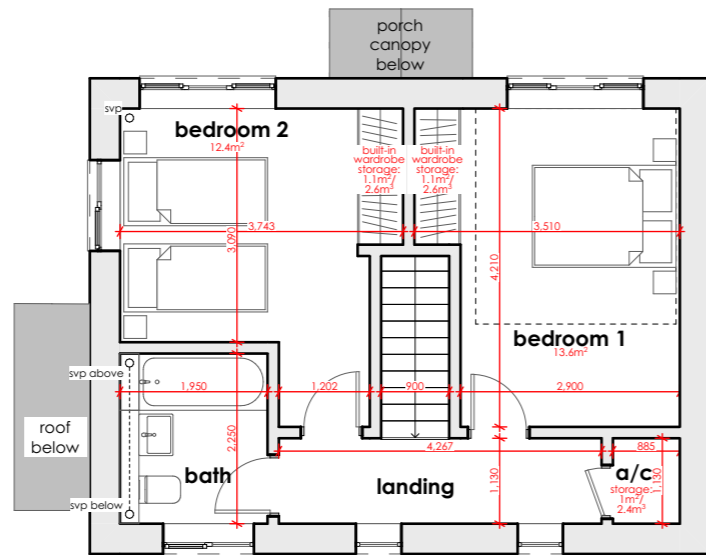
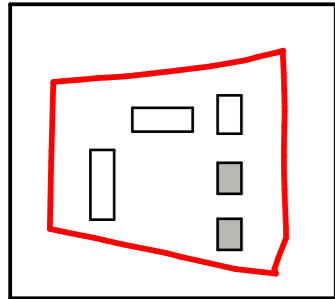
stage	date
<b>Planning</b>	<b>15/12/2023</b>
scale	sheet size
<b>1:100</b>	<b>A3</b>
drawn by	checked by
<b>TT</b>	<b>JT</b>

**2254\_PR\_130\_H**

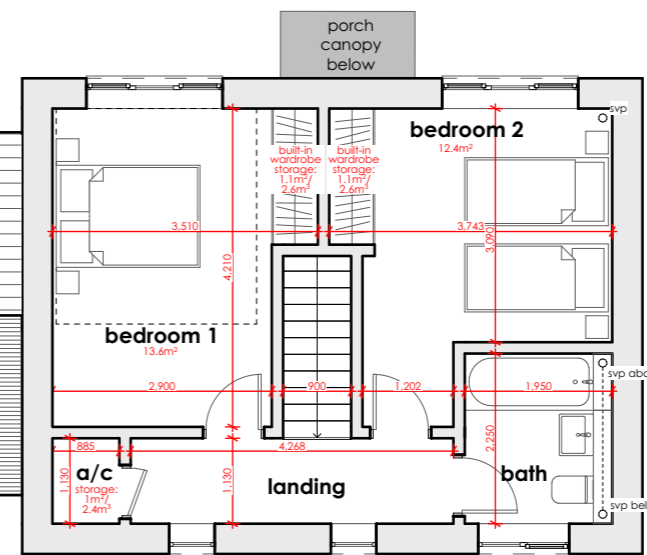


23 City Business Centre  
 Hyde Street  
 Winchester  
 SO23 7TA

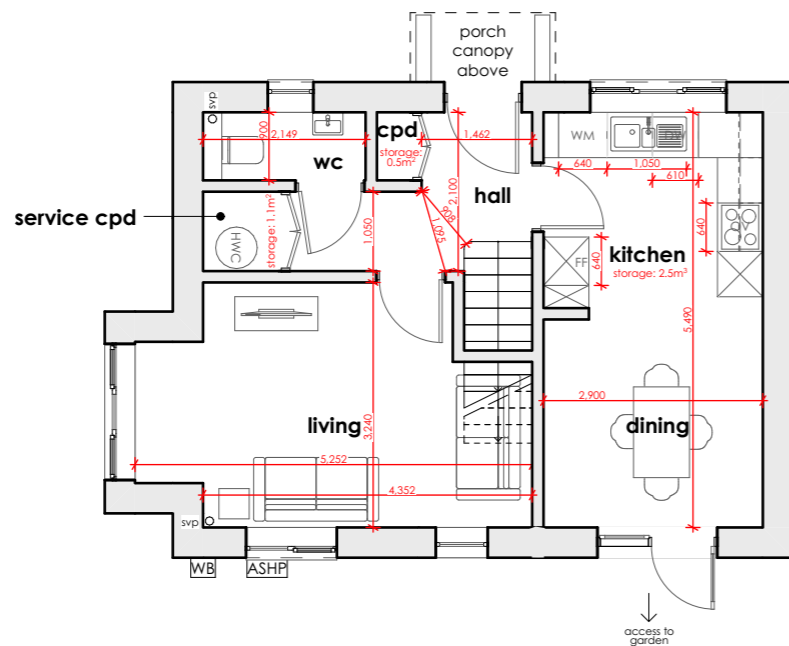
T 01962 856255  
 E info@t2architects.com  
 www.t2architects.com



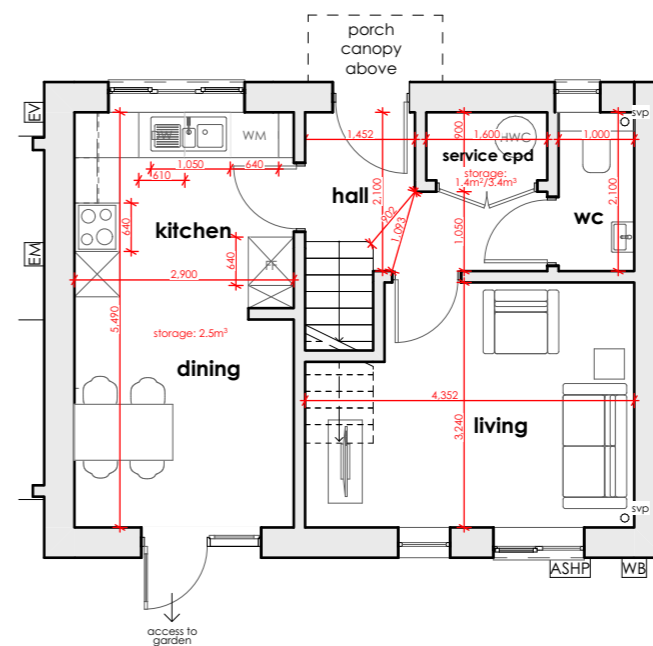
**Plot 8 First Floor Plan**



**Plot 7 First Floor Plan**



**Plot 8 Ground Floor Plan**



**Plot 7 Ground Floor Plan**