

Current Revision Description

J - 15/12/2023
Schedule of accommodation added

Rev	Date	Drawn By	Checked by
J	15/12/2023	TT	JT
I	29/11/2023	TT	JT
H	01/11/2023	TT	JT
G	23/10/2023	TT	JT

Key

- Proposed walls
- Electric Meter
- Electric Car Charging Point
- Air Source Heat Pump
- Water butt

Accommodation Schedule

Plots 1-2 (3-bed 5-person house)	
Plot 1 GIA (m ²):	95
Kitchen storage (m ³):	2.7
Total storage (m ³):	6.4
Plot 2 GIA (m ²):	95
Kitchen storage (m ³):	2.7
Total storage (m ³):	6.4
Plot 3-4 (2-bed 4-person house) <th></th>	
Plot 3 GIA (m ²):	81
Kitchen storage (m ³):	2.5
Total storage (m ³):	5.9
Plot 4 GIA (m ²):	81
Kitchen storage (m ³):	2.5
Total storage (m ³):	5.9
Plot 5-6 (1-bed 2-person maisonette) <th></th>	
Plot 5 GIA (m ²):	51
Kitchen storage (m ³):	1.8
Total storage (m ³):	4.1
Plot 6 GIA (m ²):	51
Kitchen storage (m ³):	1.8
Total storage (m ³):	4.1
Plot 7-8 (2-bed 4-person house) <th></th>	
Plot 7 GIA (m ²):	81
Kitchen storage (m ³):	2.5
Total storage (m ³):	7.6
Plot 8 GIA (m ²):	83
Kitchen storage (m ³):	2.5
Total storage (m ³):	7.6
Grand Total GIA (m²):	618

Notes

a: Gross Internal Areas measured in m² to ERHA requirements.
b: Kitchen storage measured in m³ to ERHA requirements.
c: Total storage measured in m³ excludes kitchen storage and service cupboard to ERHA requirements.
d: Total storage measured in m³ excludes kitchen and built-in wardrobe threshold and includes 0.5m² for service cupboard to NDS3 requirements.



project
Land at: The Oak Smannell Andover SP11 6JJ

client
English Rural Housing Association

drawing
Floor Plans Proposed (plots 3/4)

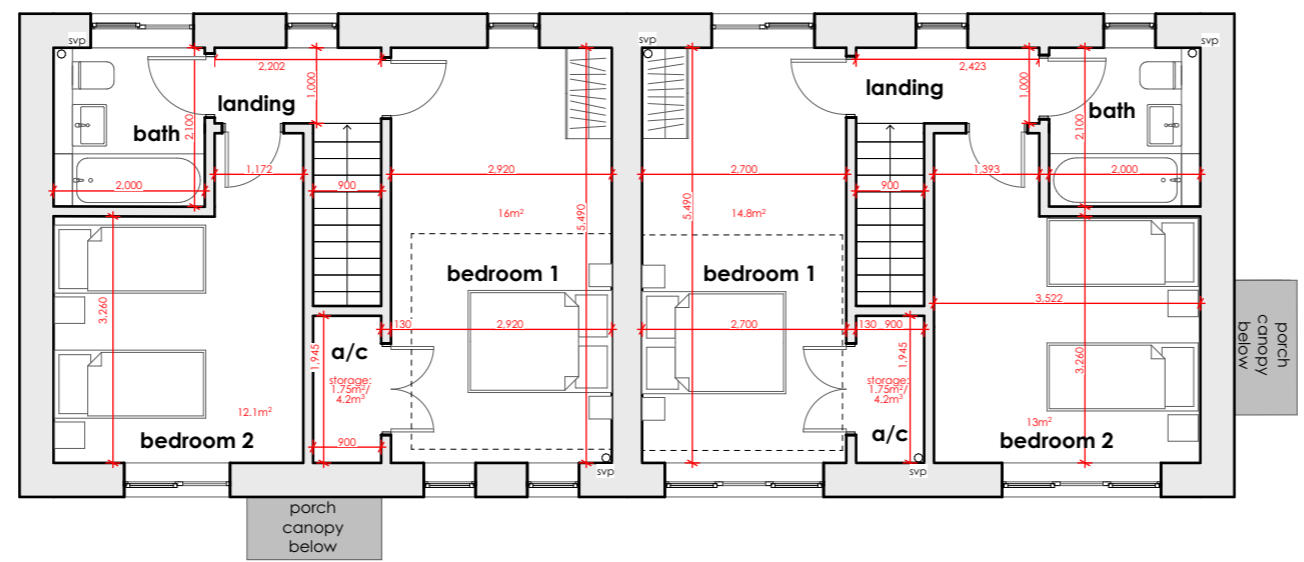
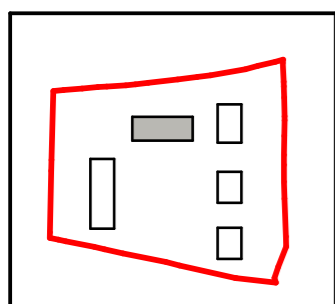
stage	date
Planning	15/12/2023
scale	sheet size
1:100	A3
drawn by	checked by
TT	JT

2254_PR_110_J



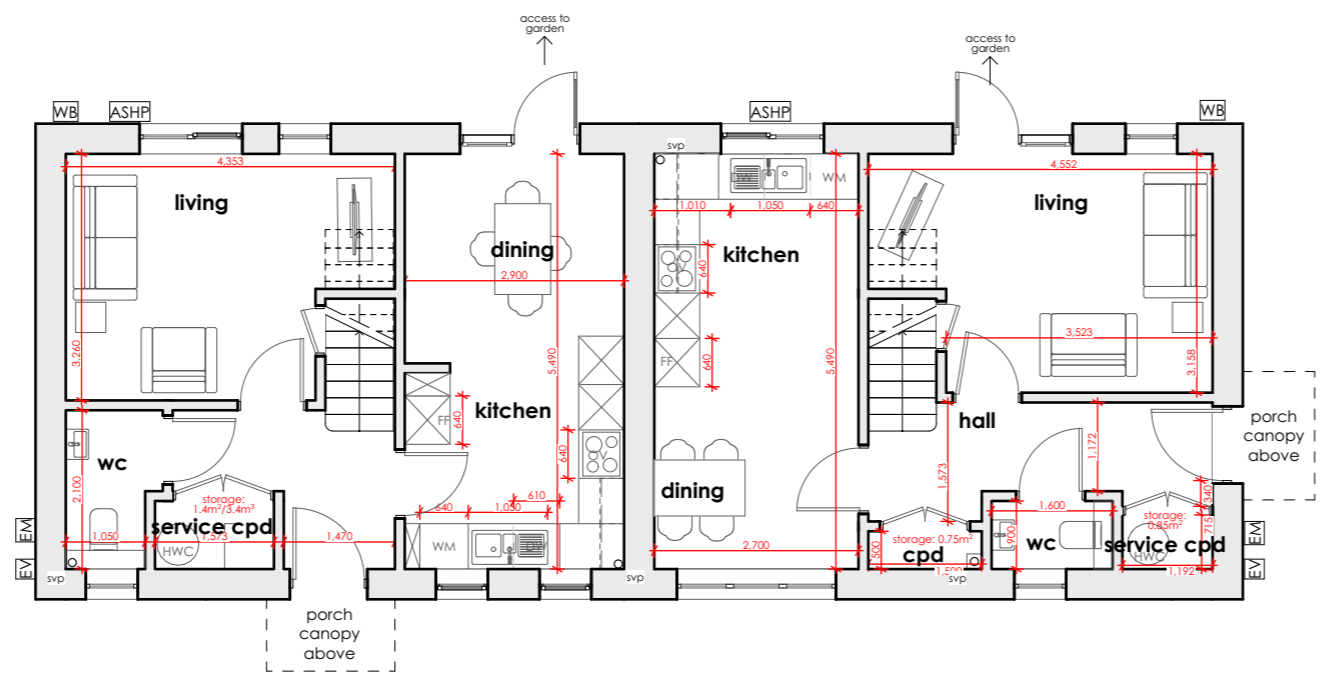
23 City Business Centre
Hyde Street
Winchester
SO23 7TA

T 01962 856255
E info@t2architects.com
www.t2architects.com



Plot 3 - First Floor Plan

Plot 4 - First Floor Plan



Plot 3 - Ground Floor Plan

Plot 4 - Ground Floor Plan