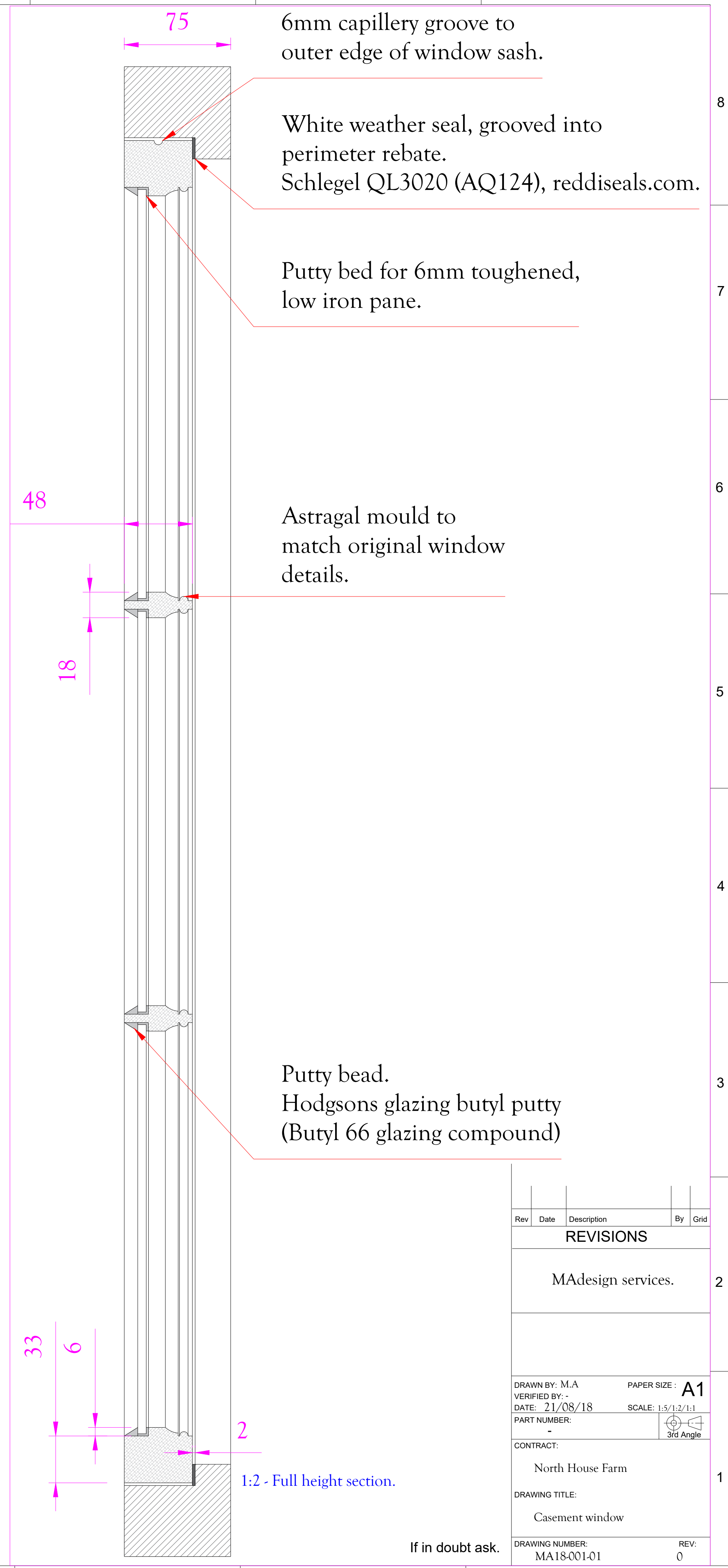
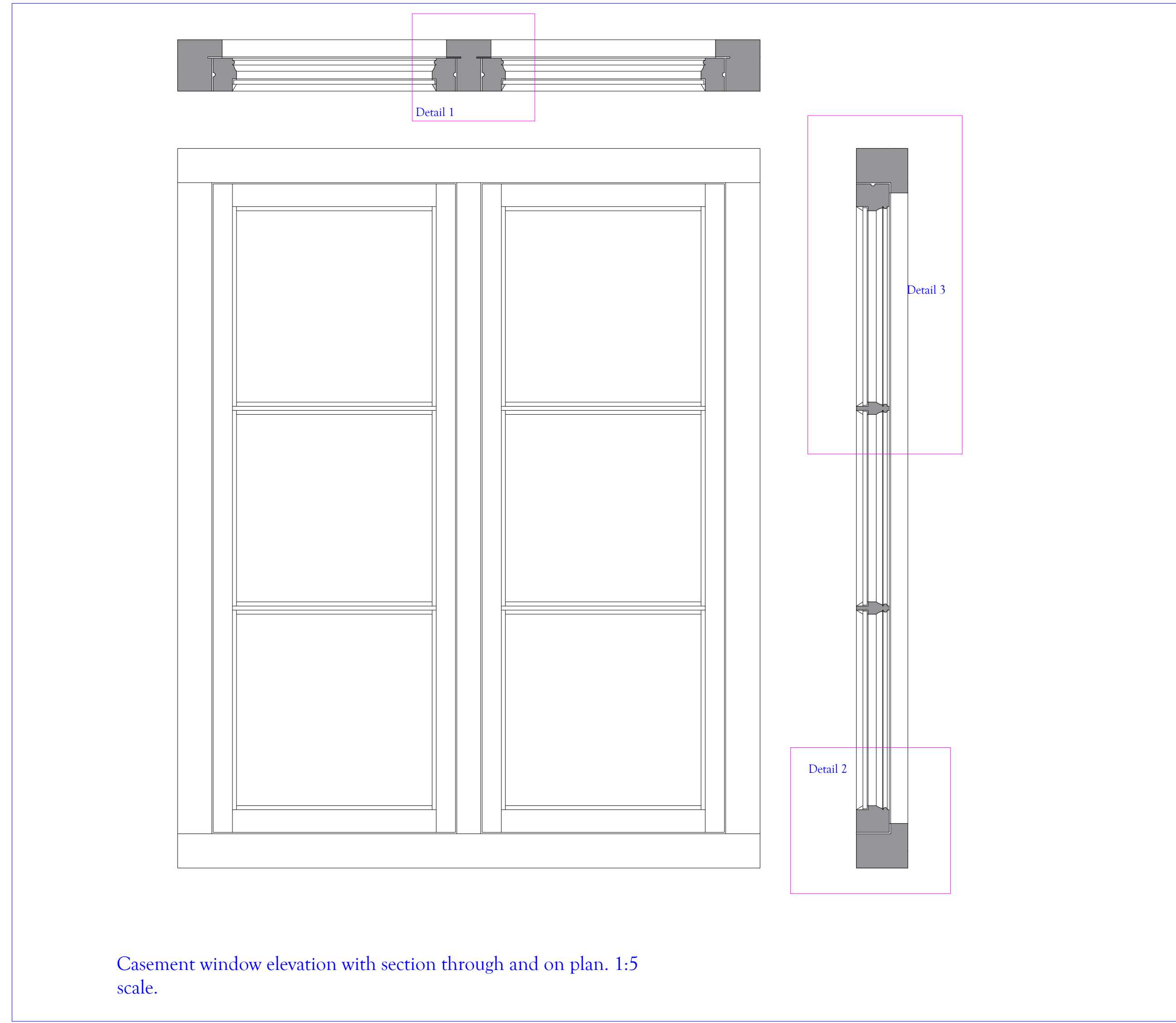


Note; All final dimensions must be checked before manufacture



75
6mm capillary groove to outer edge of window sash.

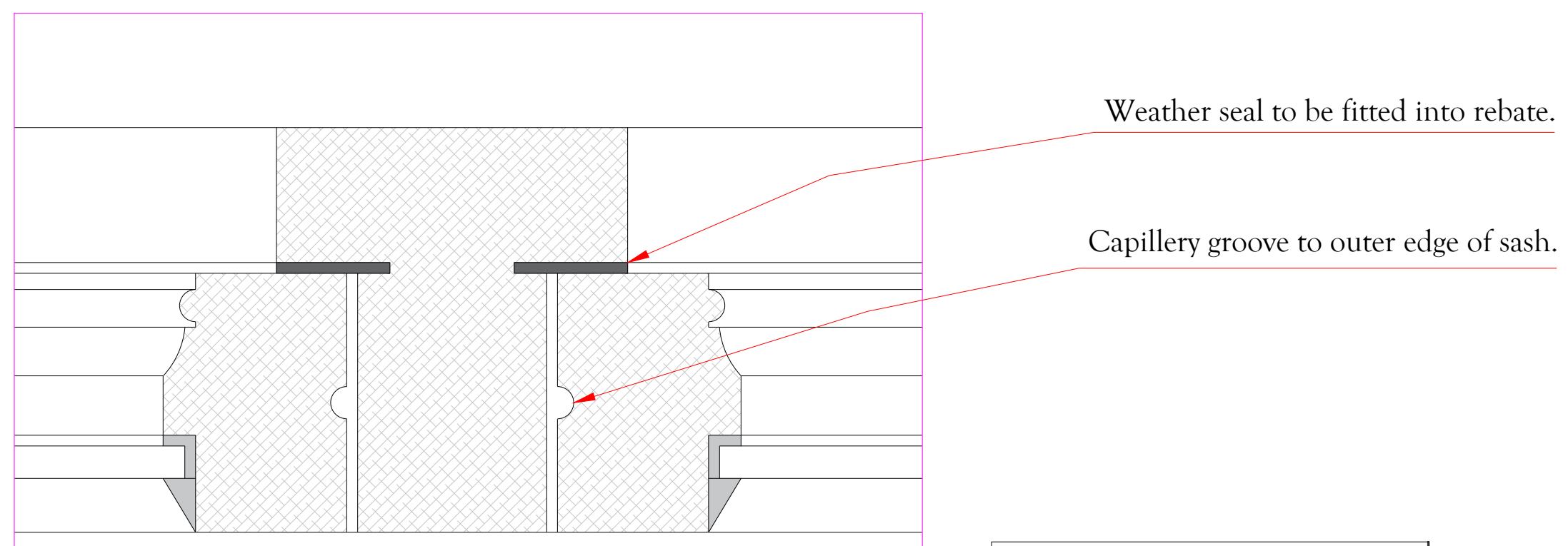
White weather seal, grooved into perimeter rebate.
Schlegel QL3020 (AQ124), reddiseals.com.

Putty bed for 6mm toughened, low iron pane.

48
18
Astragal mould to match original window details.

Putty bead.
Hodgsons glazing butyl putty (Butyl 66 glazing compound)

33
6
2
If in doubt ask.



Weather seal to be fitted into rebate.

Capillary groove to outer edge of sash.



Sashes to be hung on suitable washed exterior grade hinges, as per image.
<https://www.reddiseals.com/product/double-phosphor-bronze-washed-hinge/>

Rev	Date	Description	By	Grid
REVISIONS				
		MAdesign services.		2
DRAWN BY: M.A. PAPER SIZE: A1				
VERIFIED BY: - SCALE: 1:5/1:2/1:1				
DATE: 21/08/18				
PART NUMBER: -				
CONTRACT: North House Farm				
DRAWING TITLE: Casement window				
DRAWING NUMBER: MA18-001-01				
REV: 0				