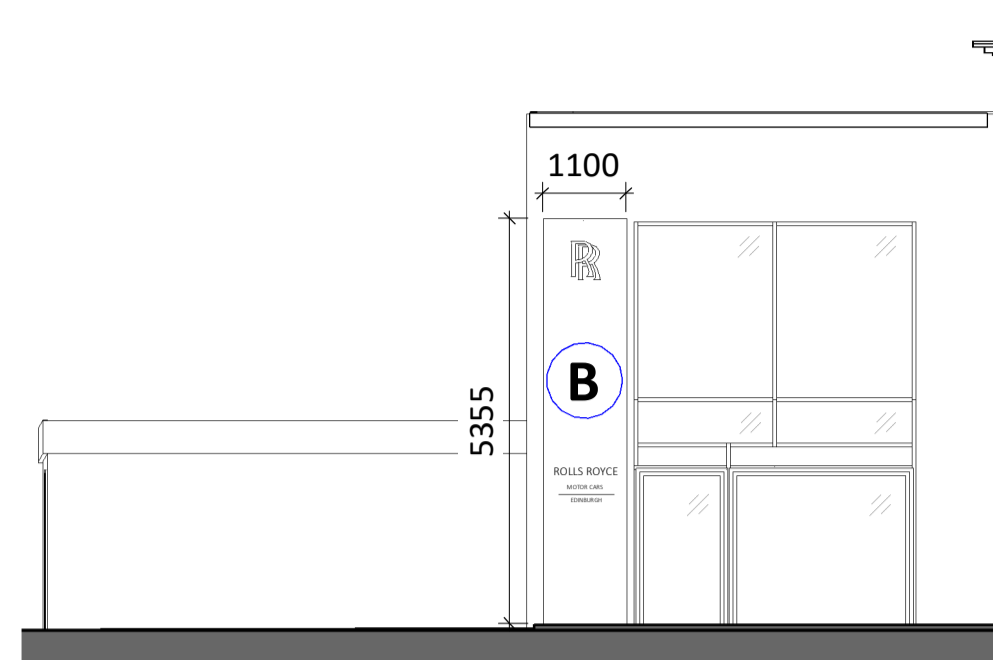


Key

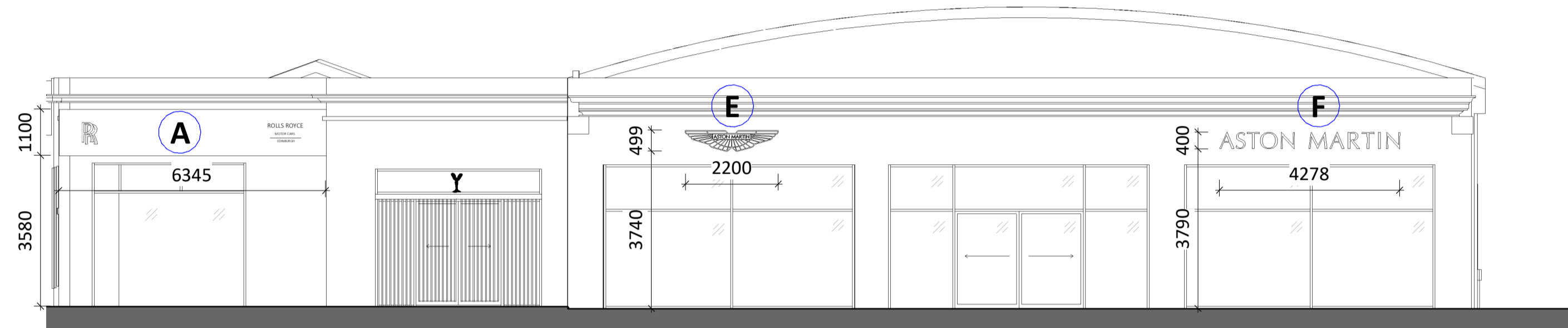
Proposed Site Signage

Proposed Building Signage

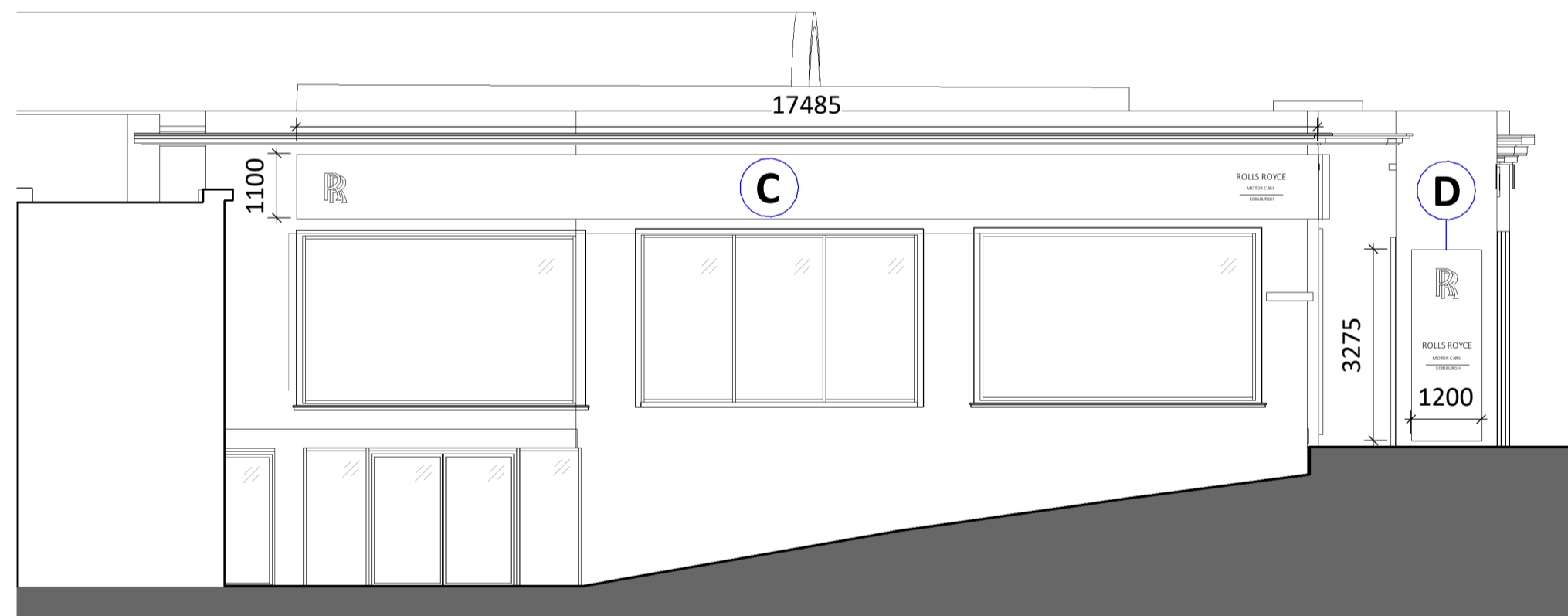
- 1 Rolls Royce Double-sided Totem (illuminated)
1800mm (w) x 5500mm (h) x 216mm (d) Aluminium RAL 320 20 15
- 2 Rolls Royce Post-mounted Parking Sign (non-illuminated)
600mm (w) x 400mm (h) RAL 320 20 15
- 3 Aston Martin Double-sided Pylon (illuminated)
2025mm (w) x 6001 (h) x 365mm (d) Grigio Alpi stone
- 4 Aston Martin Branded Post Mounted Parking Sign (non-illuminated)
700mm (w) x 500mm (h) x 120mm (d) Aluminium RAL 7021
- A Rolls Royce Horizontal Fascia (illuminated)
6345mm (w) x 1100mm (h) x 100m (d) Aluminium RAL 320 20 15
- B Rolls Royce Vertical Fascia (illuminated)
1200mm (w) x 3275mm (h) x 120mm (d) Aluminium RAL 320 20 15
- C Rolls Royce Horizontal Fascia (illuminated)
7485mm (w) x 1100mm (h) x 100m (d) Aluminium RAL 320 20 15
- D Rolls Royce Vertical Fascia (illuminated)
1100mm (w) x 5355mm (h) x 120mm (d) Aluminium RAL 320 20 15
- E Aston Martin Wall-mounted Wing logo with LED halo (illuminated)
2200mm (w) x 499mm (h) x 31mm (d) Bronze satin stainless steel
- F Aston Martin Wall-mounted Letters "Aston Martin" with LED halo (illuminated)
4278mm (w) x 400mm (h) x 50mm (d) Bronze satin stainless steel



1 - Proposed Showroom Front Elevation (south-west) - Signage
1 : 100



2 - Proposed Showroom Front Elevation (west) - Signage
1 : 100



3 - Proposed Showroom Side Elevation (north) - Signage
1 : 100

All new works are to be in accordance with The Building (Scotland) Regulations 2004 and all current amendments.

All new works, products and processes are to be in accordance with the relevant British Standards and manufacturers' guidance.

Drawing must be printed in colour.



Grange Aston Martin & Rolls-Royce Edinburgh - Sales

Drawing title
Signage Elevations

Amendments
Signage Application

Drawing No.
3622-SRA-00-XX-D-A-90-101

Revision
P01

Project No.	Originator	Funct.	Spatial	Form	Dis.	System	Number	A1 Scale	Date	Reason for Issue
JM	MT	-	-	-	-	-	-	As indicated	05/03/2024 15:33:17	For Planning

SRA | ARCHITECTS

Station House, Ashley Avenue Bath BA1 3DS | 01225 827444 | www.sra-architects.co.uk © (UK 2024) SRA Architects Ltd.

Notes
SRA Architects Ltd accepts no liability for use of this drawing by parties other than the party for whom it was prepared, or for purposes other than those for which it was prepared.

When the above drawing is issued in DWG format it is an uncontrolled version issued to enable the recipient to prepare their own documents/ models/drawings for which they are solely responsible. It is based on background information current at the time of issue. SRA Architects Ltd accepts no liability for any such alterations or additions to or discrepancies arising out of changes to such background information which occur to that information after it is issued by SRA Architects Ltd.

Responsibility is not accepted for errors made by others in scaling from this drawing.