

LANDSCAPE SPECIFICATION

For proposed SOFT and HARD works and at:
Willisham Hall, Barking Road, Suffolk, IP8 4SL

Prepared by:
Jo Wild, Landscape Architect
E:jtmwild@btinternet.com
T: 07867 336117

Date:
19 02 2024
V4
Project Ref: 1195

TABLE OF CONTENTS

1	Design Strategy	2
2	Planting area preparation.....	3
	Sub soil:.....	3
	Top soil:.....	3
	Soil improvement:	4
3	Planting specification.....	5
	Plant Stock:	5
	Plant Handling:	5
	Shrub Planting:	5
	Hedge Planting:.....	6
	Select Standard Tree Planting:	6
	Mulch:.....	6
4	Maintenance.....	7
	Regular visits:.....	7
	Watering:	7
	Plant replacements:.....	7
	Management of new trees:	7
	Hedgerows:.....	9
	Grass cutting:.....	9
	Management plan:	10
5	Plant schedule.....	11
6	Hard works schedule	13
7	Play equipment schedule	16

LIST OF APPENDICES

- Appendix 1 - Soft works plans
- Appendix 2 - Hard works plans

1 Design Strategy

- 1.1 The following specification is for the new landscape areas associated at All Saints development on land at Willisham Hall, Barking Road, Willisham, Suffolk, IP8 4SL.
- 1.2 The specification is accompanied by the soft and hard works plans at the appendices of this report:
 - 1195-01 Willisham Hall soft works
 - 1195-02 Willisham Hall hard works
- 1.3 The landscape specification and soft and hard works drawings have been prepared to support a planning application for housing and commercial premises.
- 1.4 There are several trees and hedgerows to be retained on the site boundaries which require protection during all landscaping works.

2 Planting area preparation

- 2.1 Areas of new landscaping to boundaries and gardens should be protected throughout the construction phase to avoid ground compaction, where possible.
- 2.2 Any areas that are unavoidably subject to compaction should have topsoil removed and stored until landscaping can take place; these areas should be cultivated and de-compacted prior to reapplication of topsoil.
- 2.3 In areas of new landscaping, existing ground cover, understorey vegetation, leaf litter and other surface debris shall be removed using hand operated tools only, e.g. chainsaws, brush cutters, rakes etc. Care shall be taken to ensure tools do not cause impact damage to neighbouring tree RPAs, stems or branches. Particular care to be taken when new planting within the RPAs of retained trees takes place.
- 2.4 A suitable approved systemic herbicide shall be applied 4 weeks prior to cultivation at no more than manufacturer's approved rates by spot treatment to emergent weeds only, taking care to prevent spray drift onto the stems or leaves of trees to be retained, where necessary.
- 2.5 If necessary, a second application may be applied at least 2 weeks prior to cultivation.
- 2.6 Within the RPAs of the trees to be retained, there shall be NO raising of levels with imported topsoil, and these areas will be protected throughout development phase.

Sub soil:

- 2.7 Ideally subsoil reclaimed from the site is reused. Imported subsoil should match as closely as possible those on site. Alternatively, if current soil condition is poor, imported subsoil shall meet the following specification:
- Texture 5-50% clay
 - PH 6-7.5
 - Stones <20%
- 2.8 To be free from toxic substances, weed seeds, plastic, metals etc. Subsoil shall be spread to a minimum of 250mm below new grass and shrub areas. Tree pits to be constructed as described in Section 3 'Planting Specification'. Subsoil to be spread by hand or using a back-acting track vehicle to cause minimum compaction and loss of soil structure. No soil handling shall be undertaken when the soil is wetter than the plastic limit.

Top soil:

- 2.9 Ideally topsoil reclaimed from site is reused. Imported topsoil should match as closely as possible those on site. Alternatively, if the current soil condition is poor, general purpose grade as described in Table 2, Topsoil Characteristics of BS 3882 - Specification for topsoil

should be used. Soil shall be stored in heaps not exceeding 1.5 metres high. Heaps shall be graded to shed water and avoid ponding, maintained in a weed-free condition and protected from contamination or trespass by heavy machinery.

- 2.10 Topsoil shall be lightly consolidated in layers not exceeding 150mm using track laying machinery. Works shall not be undertaken in periods of wet weather.
- 2.11 Topsoil shall be laid to the following minimum depths:
- 150mm below new grass areas;
 - 400mm beneath new shrub areas.
- 2.12 Finished levels, after settlement, shall be as follows:
- 25mm above adjacent paving, new grassed areas and non-mulched shrub beds;
 - 75mm below adjacent paving and grass for mulched planting beds.
- 2.13 Tree pits to be back filled with topsoil to BS3882 specification.

Soil improvement:

- 2.14 Compost and fertilisers to be incorporated into the top 200mm of each square metre of topsoil for all ornamental shrub beds and tree pits.

3 Planting specification

- 3.1 The planting shall be carried out in the first planting (seeding) season following completion of the development (between December and March inclusive).
- 3.2 All plant stock, plant handling and planting to be undertaken in accordance with the following British Standard Specifications and Code of Practice:
- BS 3936:1992 Part 1 Nursery Stock - Specification for trees and shrubs;
 - BS 3936:1981 Part 10 Nursery Stock - Specification for ground cover plants;
 - BS 4428:1989 - Code of Practice for General Landscaping Operations (excluding hard surfaces);
 - BS 8545:2014 Trees from Nursery to Independence in the Landscape;
 - The Code of Practice for Plant Handling 2002 (Horticultural Trades Association).

Plant Stock:

- 3.3 Plant stock to be supplied in accordance with the size and description specified on the plant schedule.
- 3.4 Plant stock shall be healthy, vigorous, free from pests and diseases and suitably hardened off for the proposed situation of planting, and lifted at a time in accordance with good nursery practice. Stock shall have a well formed fibrous root system and be free from perennial weeds. The form of trees shall be in accordance with BS 3936: 1992 Part 1 Section 7 - Form of trees.

Plant Handling:

- 3.5 All plant materials shall be lifted, bundled, labelled, packaged, transported, temporarily stored and planted in accordance with the procedures and methods illustrated in the publication, "Plant Handling" (Horticultural Trades Association) and relevant sections of BS 4043:1989 - Recommendations for transplanting of root-balled trees.

Shrub Planting:

- 3.6 All bare root stock shall be planted between December and March inclusive. Plants shall be delivered to site in quantities which can be planted the same day. No plant roots shall be allowed to dry out.
- 3.7 2L and 3L pot grown shrubs shall be planted in pits 350 x 350x 350mm and back-filled gently with original topsoil combined with 1kg of slow release fertiliser per 300 square metres. (Isobutizidene divrea or sulphur-coated urea or similar approved).

- 3.8 Plant stock shall be watered in same day with 5 litres per plant.

Hedge Planting:

- 3.9 All bare root stock shall be planted between December and March inclusive. Plants shall be delivered to site in quantities which can be planted the same day. No plant roots shall be allowed to dry out.
- 3.10 Plant handling as with Shrub planting: 8 staggered rows per linear metre at approximately 25cm centres. L or T shaped notches 2m spacing, remove weeds, large stones to 50cm x 50cm. Back-filled gently with original topsoil and insert whip and cane support and photo-degradable guards need to be applied.

Select Standard Tree Planting:

- 3.11 Pits to be prepared to 800 x 800 x 800mm. Sides to be scarified if sides have become compacted during excavation. Excavated material of usable quality to be retained in separated topsoil and subsoil for reuse where possible.
- 3.12 Standard Trees to be single staked using one stake (50mm diameter), driven into ground 300mm below bottom of pit. Base of pit to be filled with 200mm of 3:1 mix of approved topsoil/ 'peat free' compost.
- 3.13 Trees to be centrally located and stem placed in an upright position. Pit to be back-filled with original subsoil and topsoil to match previous levels, or subsoil and topsoil as described in section 2. Backfill firmly with original top soil/compost combined, to 50mm above previous ground level to allow for settlement where possible.
- 3.14 Saw stakes to leave 600mm above soil level. Fix adjustable tree ties to each stake using biodegradable tree ties. Deer protection 120cm spiral tubes.
- 3.15 Water in same day with 50 litres per tree.
- 3.16 All works shall be carried out to the minimum standard according to BS 3936:1992 -Nursery stock specification for trees and shrubs and BS 8545:2014 Trees from Nursery to Independence in the Landscape.

Mulch:

- 3.17 Planting beds shall be spread with a medium grade bark mulch to a settled depth of 75mm. Mulch to be free from fines, weeds, disease and contaminants.

4 Maintenance

4.1 External space shall be maintained by the Developers agent during the time of implementation. Thereafter the maintenance of all landscaped areas will be the responsibility of the residents or a management agreement in common areas.

Regular visits:

4.2 Recommended maintenance to include the following operations:

- Hand weed planting beds;
- Remove litter;
- Sweep mulch spillage;
- Re-firm plant stock as necessary;
- Adjust stakes and ties as necessary;
- Prune plant stock as required to encourage good form and maintain the width of footways;
- Check all plant stock and report signs of pests, disease, death and damage;
- Maintain paths free of debris and overhanging plants;
- Inspect paths for build-up of algae and apply treatment to maintain a slip free surface.

Watering:

4.3 Recommended plant stock to receive the following quantities of water in the first 24 months:

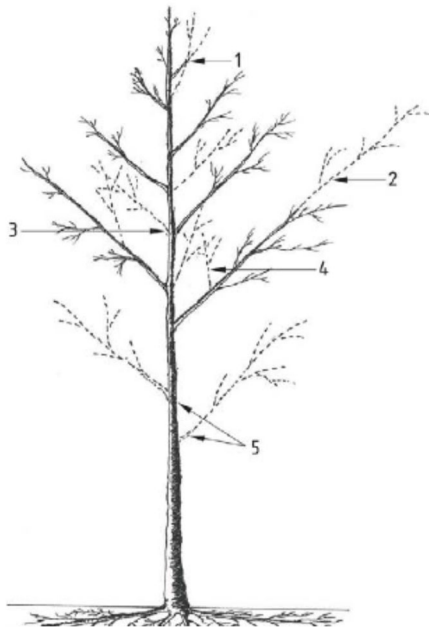
- Select standard trees - 25 litres on 10 occasions throughout the growing season, or when less than 30mm precipitation at the end of any 4 week period;
- Hedgerows - 20 litres per m² on three occasions throughout growing season, or when less than 30mm precipitation at the end of any 4 week period;
- Shrub borders - on 10 occasions throughout the growing season, or when less than 30mm precipitation at the end of any 4 week period.

Plant replacements:

4.4 Within 5 years of completion of the development all dead, dying and vandalised plant stock to be replaced at the end of each growing season throughout the maintenance period.


Management of new trees:

4.5 Trees shall be inspected every autumn in order to assess their condition and identify tree work requirements. Tree works shall be carried out in accordance with the recommendations of the assessment in accordance with BS8545 Trees from Nursery to Independence in the Landscape.



4.6 Formative pruning of trees (BS8545:2014)

- Co dominant leader to be removed
- Over vigorous laterals to be subordinated
- Opposite branches to be removed
- Upright growth into crown to be removed
- Lower branches from nursery to be kept subordinated and to not form part of final scaffold

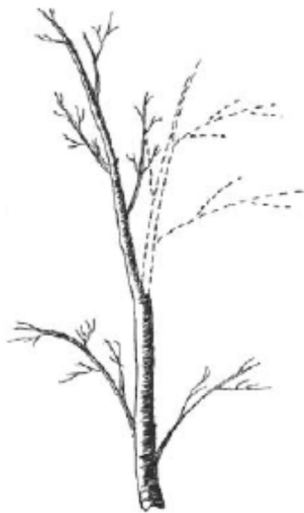
-  Likely extension growth following pruning



4.7 Lateral branches subordinated to retain size at no more than 50% diameter of main stem at point of attachment.



- 4.8 Included branch unions or weak forks to be pruned out.



- 4.9 Co-dominant leaders to be pruned out or subordinated to the main leader.

Hedgerows:

- 4.10 Trim outside of the bird nesting season in late February. Maintain formal hedgerow at 0.60m width and 1.2m high.

Grass cutting:

- 4.11 Grass to be cut throughout the first growing season to maintain a sward of 40mm to create tillering of grasses and make good coverage. To be edged and clippings removed and watered as necessary.
- 4.12 Second growing season and ongoing mow regularly to 25-40mm sward.

Management plan:

	Year 1	Year 2	Year 3	Year 4	Year 5
Shrub pruning	Maintain good form. Remove herbaceous material in spring before new growth. Replace, dead dying and diseased stock Climbers to be re tied where necessary and supporting wires applied	Maintain good form. Remove herbaceous material in spring before new growth. Replace, dead dying and diseased stock Top up mulch Climbers to be re tied where necessary and supporting wires applied	Maintain good form. Remove herbaceous material in spring before new growth. Replace, dead dying and diseased stock Climbers to be re tied where necessary and supporting wires applied	Maintain good form. Remove herbaceous material in spring before new growth. Replace, dead dying and diseased stock Top up mulch Climbers to be re tied where necessary and supporting wires applied	Maintain good form. Remove herbaceous material in spring before new growth. Replace, dead dying and diseased stock Climbers to be re tied where necessary and supporting wires applied
Wild flora lawn care	Regular mowing throughout the first growing season to maintain a 40mm sward. Maintain tidy edges and remove arisings	Regular mowing throughout the first growing season to 25-40mm sward Maintain tidy edges and remove arisings	Regular mowing throughout the first growing season to 25-40mm sward Maintain tidy edges and remove arisings	Regular mowing throughout the first growing season to 25-40mm sward Maintain tidy edges and remove arisings	Regular mowing throughout the first growing season to 25-40mm sward Maintain tidy edges and remove arisings
Hedgerows	Formative pruning, reduce to 75cm to encourage bushy growth.	Formative pruning, reduce to 1m to encourage bushy growth.	Maintain at 1.2m height and 70cm width.	Maintain at 1.2m height and 70cm width.	Maintain at 1.2m height and 70cm width.
Inspection of tree health	Yearly Check tree health. Ensure good form by formative pruning	Yearly Check tree health. Ensure good form by formative pruning	Yearly Check tree health. Ensure good form by formative pruning	Yearly Check tree health. Replace, dead dying and diseased stock Remove stakes and ties	Yearly Check tree health. Replace, dead dying and diseased stock

5 Plant schedule

Trees - Selected Standard: Native = (n); wildlife friendly = (w); multi-stemmed (MS)				
Name	Girth/root stock	Root condition	Habit	Number
Acer campestre (n)	10-12cm	Bare root	10-15m native tree	14
Malus 'Lady Henniker' (w)	MM106	Container grown/bare root	Heritage Suffolk apple bred in 1845	2
Malus 'St Edmunds Russet' (w)	MM106	Container grown/bare root	Heritage Suffolk apple bred in 1845	4
Malus 'Honey Pippin' (w)	MM106	Container grown/bare root	Heritage Suffolk apple bred in 1950	3
Malus 'Cox Self fertile' (w)	MM106	Container grown/bare root	Small tree up to 8m, white spring flowers, edible red apples in autumn	2
Prunus padus (n)	10-12cm	Bare root	10-15m native with spring flowers	5
Prunus 'Polstead Black' (w)	Colt	Container grown/bare root	Heritage gage bred in Suffolk 1700s	4
Prunus 'Coes Golden Drop' (w)	St Julien 'A'	Container grown/bare root	Heritage cherry bred in Suffolk pre 1900	5
Pyrus 'Conference Self fertile' (w)	Quince 'A'	Container grown/bare root	Conical with white spring flowers and edible pears fruits up to 12m	4

Hedge Plants - 8 per linear metre in staggered rows: Native = (n); wildlife friendly = (w); multi-stemmed (MS)					
Name	Size	Root condition	Habit	Density per lsqm	Number
Acer campestre (n)	50cm	Bare rooted	Deciduous	2	568
Crataegus monogyna (n)	60cm	Bare rooted	Deciduous	3	852
Prunus spinosa (n)	60cm	Bare rooted	Deciduous	2	568
Malus sylvestris (n)	60cm	Bare rooted	Deciduous	0.5	146

Rosa canina (n)	60cm	Bare rooted	Deciduous	0.5	146
-----------------	------	-------------	-----------	-----	-----

Shrubs and Perennials: Native = (n); wildlife friendly = (w); multi-stemmed (MS)					
Name	Pot Size	Height	Habit	Density per sqm	Number
Cornus sanguinea (n)	3l	20-40cm	Winter red stems native plant	4	54
Cytisus scoparius 'Boskoop Ruby' (w)	2l	30-40cm	Red flowers in summer up to 1.2m	4	45
Dryopteris filix-mas (n)	3l	30-40cm	Semi evergreen native 'Male' fern 1.2m	5	70
Hebe 'Garden Beauty White' (w)	2l	20-30cm	White summer flowers evergreen 50cm	5	54
Lavendula 'Hidcote' (w)	2l	30-40cm	Evergreen grey foliage with summer spikes of blues flowers 75cm	5	45
Rosmarinus officinalis 'Miss Jessops Upright' (w)	3l	20-30cm	Evergreen upright fragrant shrub with blue spring flowers up to 2m	3	54

6 Hard works schedule

<p>BOUNDARY TREATMENTS (PLAY AREA)</p> <p>Product: Sentry Metal Fence and gate to match; railings on retained wall to be 300mm (h)</p> <p>Dimensions: 1200mm (h)</p> <p>Colour/ Finish: dark grey powder coated (RAL to be confirmed by architect)</p> <p>Supplier: Jacksons Ltd (or similar approved)</p>	
<p>BOUNDARY TREATMENTS (PUBLIC SPACES AND FRONT GARDENS)</p> <p>Product: Standard post and rail fence</p> <p>Dimensions: 1200mm height</p> <p>Pattern:</p> <p>Colour/ Finish: Natural timber</p> <p>Supplier: Jacksons Fencing Ltd</p>	
<p>BOUNDARY TREATMENTS (PRIVATER REAR GARDENS)</p> <p>Product: Standard close board fence to garden boundaries gates to match</p> <p>Dimensions: 1800mm height</p> <p>Pattern:</p> <p>Colour/ Finish: Natural timber</p> <p>Supplier: Jacksons Fencing Ltd (or similar)</p>	

PAVING - ROAD

Product: Pedesta permeable concrete block paving

Dimensions: 200mm (W) x 100mm (L) x 80mm (D)

Pattern: Herringbone

Colour/ Finish: 'Bracken'

Supplier: Tobermore (or similar approved)



PAVING – DRIVES

Product: Hydropave permeable pavin

Dimensions: 208 x 173mm x 60mm (D)

Pattern: Stretcher bond

Colour/ Finish: Heather

Supplier: Tobermore (or similar approved)



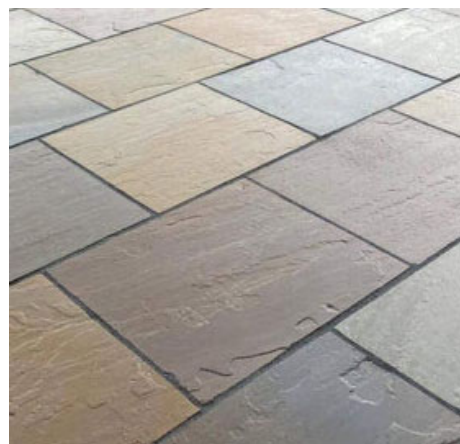
Product: Raaj blend sandstone

Dimensions: 600mm x 900mm x 18mm (D)

Pattern: Staggered bond

Colour/ Finish: Light

Supplier: Pavestone (or similar approved)



Product: Golden gravel
Dimensions: 20mm
Pattern:
Colour/ Finish: golden
Supplier: Decorative Aggregates (or similar approved)



SEATING

Product: Greenwich Bench
Dimensions: 1800mm (l) x 445mm (h) x 491mm (w)
Colour/ Finish: Black
Supplier: Streetmaster (or similar)





CYCLE STORE


Product: 6/8 Space Amazon Eco Cycle Shelter
timber cycle store with 5No Sheffield hoops bicycle storage
Dimensions: 2100mm x 3100mm x 2100mm (h)
Colour/ Finish: Timber
Supplier: The Bike Storage Co (or similar)



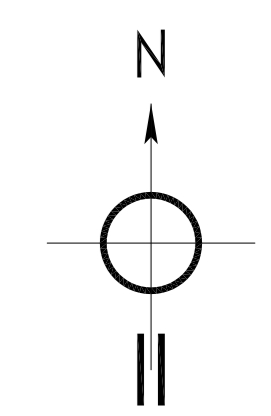
7 Play equipment schedule

<p>Material</p>	<p>Wicksteed Playscapes, Timber 2 seat Swing Play area 7900 x 3500mm Surfacing requirements corresponding to a fall height of ≤ 1.40 Installation to manufacturer's recommendation</p> 
<p>Usage</p>	<p>Areas indicated on hard works plan</p>

<p>Material</p>	<p>Wicksteed Playscapes, Low pedestal slide Play area 6186 x 3537mm Surfacing requirements corresponding to a fall height of ≤ 1.40 Installation to manufacturer's recommendation</p> 
<p>Usage</p>	<p>Areas indicated on hard works plan</p>

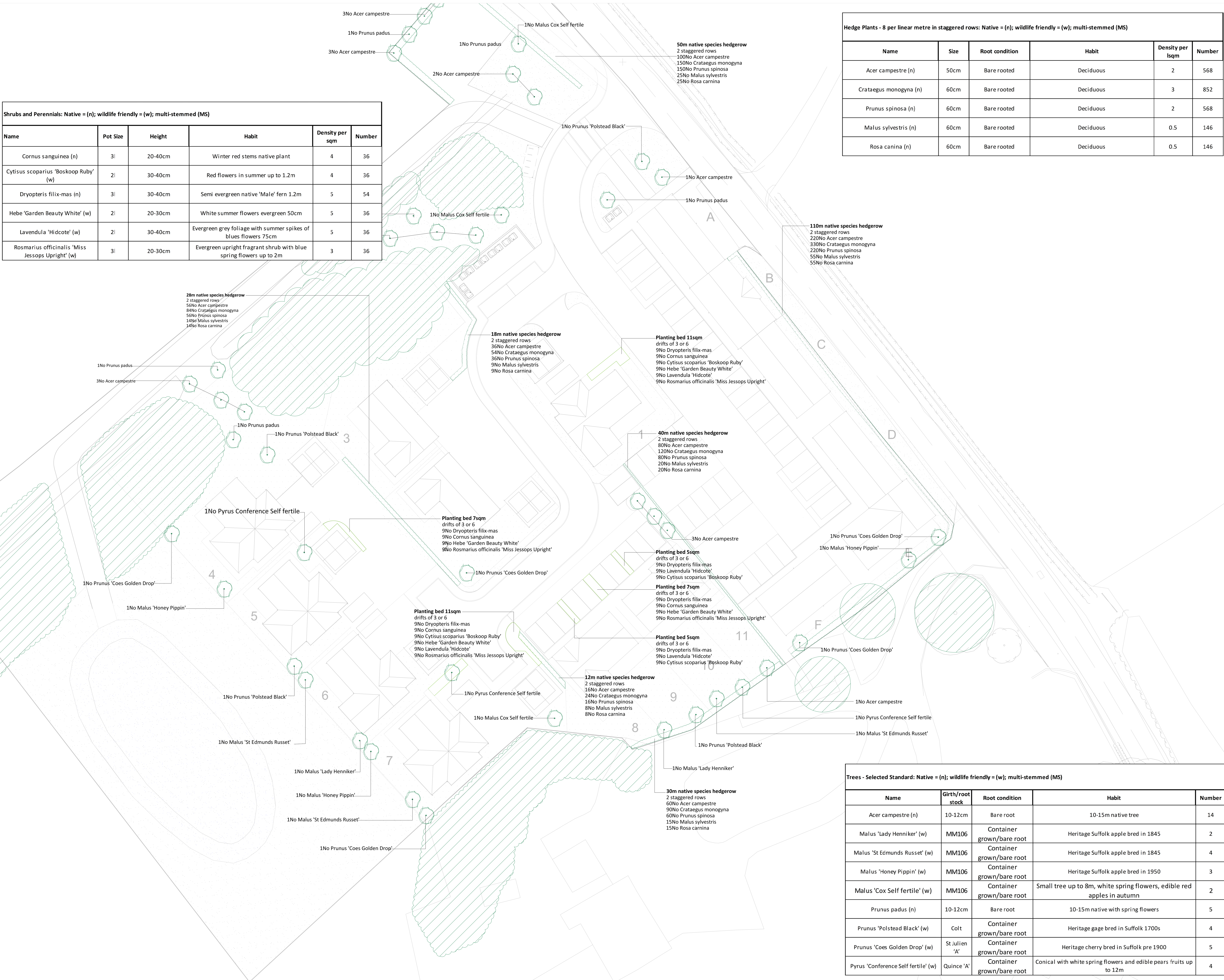
<p>Material</p>	<p>Wicksteed Playscapes, Cheese slide Play area 5160 x 3675mm Surfacing requirements corresponding to a fall height of ≤ 1.00 Installation to manufacturer's recommendation</p> 
<p>Usage</p>	<p>Areas indicated on hard works plan</p>

APPENDIX 1



Shrubs and Perennials: Native = (n); wildlife friendly = (w); multi-stemmed (MS)					
Name	Pot Size	Height	Habit	Density per sqm	Number
Cornus sanguinea (n)	3l	20-40cm	Winter red stems native plant	4	36
Cytisus scoparius 'Boskoop Ruby' (w)	2l	30-40cm	Red flowers in summer up to 1.2m	4	36
Dryopteris filix-mas (n)	3l	30-40cm	Semi evergreen native 'Male' fern 1.2m	5	54
Hebe 'Garden Beauty White' (w)	2l	20-30cm	White summer flowers evergreen 50cm	5	36
Lavendula 'Hidcote' (w)	2l	30-40cm	Evergreen grey foliage with summer spikes of blues flowers 75cm	5	36
Rosmarium officinalis 'Miss Jessops Upright' (w)	3l	20-30cm	Evergreen upright fragrant shrub with blue spring flowers up to 2m	3	36

Hedge Plants - 8 per linear metre in staggered rows: Native = (n); wildlife friendly = (w); multi-stemmed (MS)					
Name	Size	Root condition	Habit	Density per sqm	Number
Acer campestre (n)	50cm	Bare rooted	Deciduous	2	568
Crataegus monogyna (n)	60cm	Bare rooted	Deciduous	3	852
Prunus spinosa (n)	60cm	Bare rooted	Deciduous	2	568
Malus sylvestris (n)	60cm	Bare rooted	Deciduous	0.5	146
Rosa canina (n)	60cm	Bare rooted	Deciduous	0.5	146



The planting shall be carried out in the first planting (seeding) season following completion of the development (between December and March inclusive).

All plant stock, plant handling and planting to be undertaken in accordance with the following British Standard Specifications and Code of Practice:

- BS 3936:1992 Part 1 Nursery Stock - Specification for trees and shrubs;
- BS 3936:1998 Part 10 Nursery Stock - Specification for ground cover plants;
- BS 4428:1989 - Code of Practice for General Landscaping Operations (excluding hard surfaces);
- BS 8545:2014 Trees from Nursery to Independence in the Landscape;
- The Code of Practice for Plant Handling 2002 (Horticultural Trades Association).

- LEGEND (SOFT WORKS)**
- Retained tree/conifer
 - Select standard tree or fruit tree
 - Shrubs and perennials
 - Hedging
 - Species Rich Lawn - Wild flora lawn grass - Emorsgate EL1 wild flora lawn mix (or similar) or Wildflower Turf Species Rich Lawn Turf (WFT-Species-Rich-26), or equal approved - pre grown turf
 - Activity Lawn - Boston Seeds Quality Hard Wearing Lawn Seed - or pre grown turf
 - Wildflower seed mix - Emorsgate EP1 Pond Edge Mixture (or similar)

Trees - Selected Standard: Native = (n); wildlife friendly = (w); multi-stemmed (MS)				
Name	Girth/root stock	Root condition	Habit	Number
Acer campestre (n)	10-12cm	Bare root	10-15m native tree	14
Malus 'Lady Henniker' (w)	MM106	Container grown/bare root	Heritage Suffolk apple bred in 1845	2
Malus 'St Edmunds Russet' (w)	MM106	Container grown/bare root	Heritage Suffolk apple bred in 1845	4
Malus 'Honey Pippin' (w)	MM106	Container grown/bare root	Heritage Suffolk apple bred in 1950	3
Malus 'Cox Self fertile' (w)	MM106	Container grown/bare root	Small tree up to 8m, white spring flowers, edible red apples in autumn	2
Prunus padus (n)	10-12cm	Bare root	10-15m native with spring flowers	5
Prunus 'Polstead Black' (w)	Colt	Container grown/bare root	Heritage gage bred in Suffolk 1700s	4
Prunus 'Coes Golden Drop' (w)	St Julien 'A'	Container grown/bare root	Heritage cherry bred in Suffolk pre 1900	5
Pyrus 'Conference Self fertile' (w)	Quince 'A'	Container grown/bare root	Conical with white spring flowers and edible pears fruits up to 12m	4

Notes
Plan to be read in conjunction with the engineer and landscape drawings.

No measurements to be scaled off drawing. Worked from figured dimensions only.

All dimensions shown on drawing are shown in millimetres unless otherwise stated.

All dimensions and levels to be checked on site. Landscape Architect to be notified immediately of any discrepancies prior to the commencement of works.

greenlight
environmental consultancy

Date: 12.02.2024
Reason for revisions: Revised boundaries
By: JW

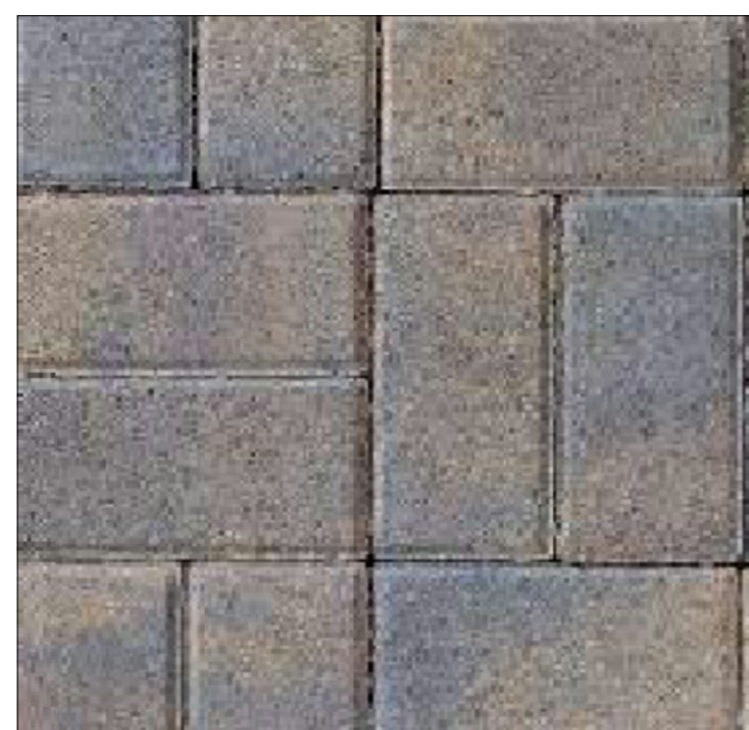
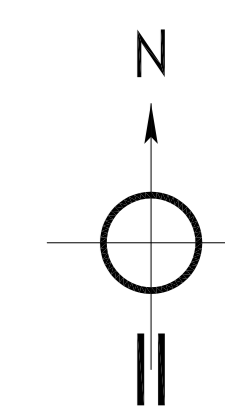
Client: WO Chaplin Farms Ltd

Project: Wiltshire Hall, Barking Road, IP8 4SL

Drawing Title: Soft works

Scale: 1:200 @ A0
Date: May 2020
Drawing Number: 1195-01
Revision Number: C

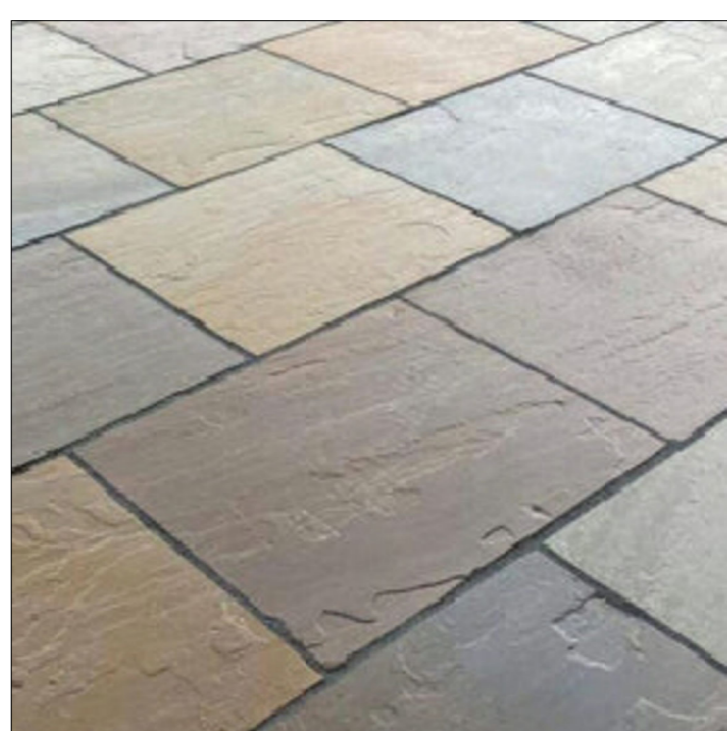
APPENDIX 2



Tobermore: Pedesta permeable concrete block paving; 'Bracken'



Tobermore: Hydropave permeable paving; 'Heather'



Pavestone Raj Blend sandstone



LEGEND (HARD WORKS)

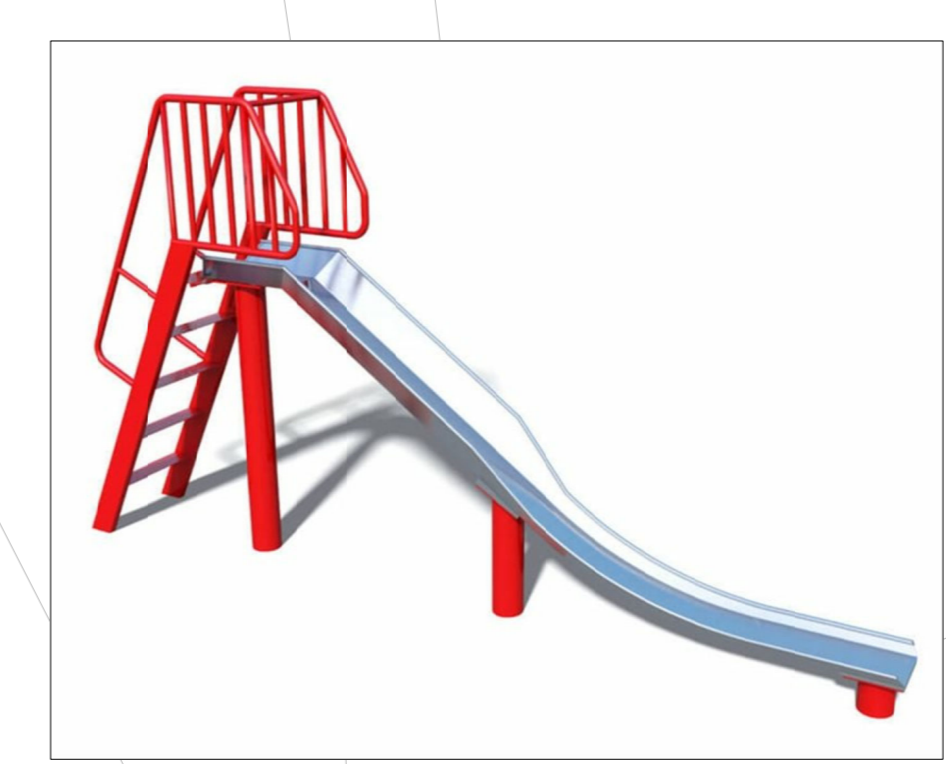
- Bituminous macadam, 'dark grey' with concrete kerbs
- Bituminous macadam, 'light grey' footpaths with 50mm concrete kerbs
- Tobermore: Pedesta permeable concrete block paving; 'Bracken' 80mm deep, 200 x 100mm, herringbone pattern (or similar)
- Tobermore: Hydropave permeable paving; 'Heather'; 208 x 173mm x 60mm (d) (or similar)
- Golden Gravel (20mm) over gravel grid 50mm deep, overfill by 25mm; 150mm subbase of compacted type 1
- Pavestone Raj Blend sandstone; 600mm x 900mm x 18mm (d) (or similar)
- Marshalls granite sets rumble strip 100mm x 100mm x 100mm
- British Standard Half battered Concrete Kerb; 255mm x 125mm x 214mm
- British Standard Bull Nosed Concrete Kerb 125mm x 150mm x 915mm
- Flat top concrete edging 914mm x 50mm x 50mm
- Jackson Timber post and rail fence, 1200mm ht
- Timber close board fence to garden boundaries, 1800mm
- Timber gates, 1800mm height, 1000mm wide
- Seating - Streetmaster 'Greenwich Bench' 1800mm (l) x 445mm (h) x 491mm (w) 'black'
- The Bike Storage Co - 6/8 Space Amazon Eco Cycle Shelter timber cycle store with 5No Sheffield hoops bicycle storage; 2100mm x 3100mm x 2100mm (h) (or similar)
- Bin Store bespoke timber surrounds; 1No 2389mm x 3500mm x 1500 (h); 1No 4770mm x 14210mm x 1500mm (h)
- Electric vehicle charging point
- Jacksens Fencing: Sentry Metal Fence and gate to match; railings Black 1200mm ht
- Playtop safety surfacing, porous rubber crumb, 'Mid Green' RAL6017 and 'Brown', 90mm depth, RAL8024 sub-base to Engineer's recommendation Charcon Flat Top edging 50mmW x 150mmD x 914mmL
- Wicksteed Playscapes, 1No Timber 2 seat Swing Play area 7900 x 3500mm Surfacing requirements corresponding to a fall height of ≤ 1.40
- Wicksteed Playscapes, low pedestal slide Play area 6186 x 3537mm Surfacing requirements corresponding to a fall height of ≤ 1.40 m
- Wicksteed Playscapes, Cheese slide Play area 5160 x 3675mm Surfacing requirements corresponding to a fall height of ≤ 1.00 m



Swing set



Toddler slide



Slide for older children

Notes
Plan to be read in conjunction with the engineer and landscape drawings.
No measurements to be scaled off drawing. Worked from figured dimensions only.
All dimensions shown on drawing are shown in millimetres unless otherwise stated.
All dimensions and levels to be checked on site. Landscape Architect to be notified immediately of any discrepancies prior to the commencement of works.



Date	Reason for revisions	By
19.02.2024	Change to drive surface type	JW
Client	WD Chaplin Farms Ltd	
Project	Willsham Hall, Barking Road, IP8 6LL	
Drawing Title	Hard works	
Scale	1:200 @ A0	Date: May 2020
Drawing Number	1195-02	Revision Number: D