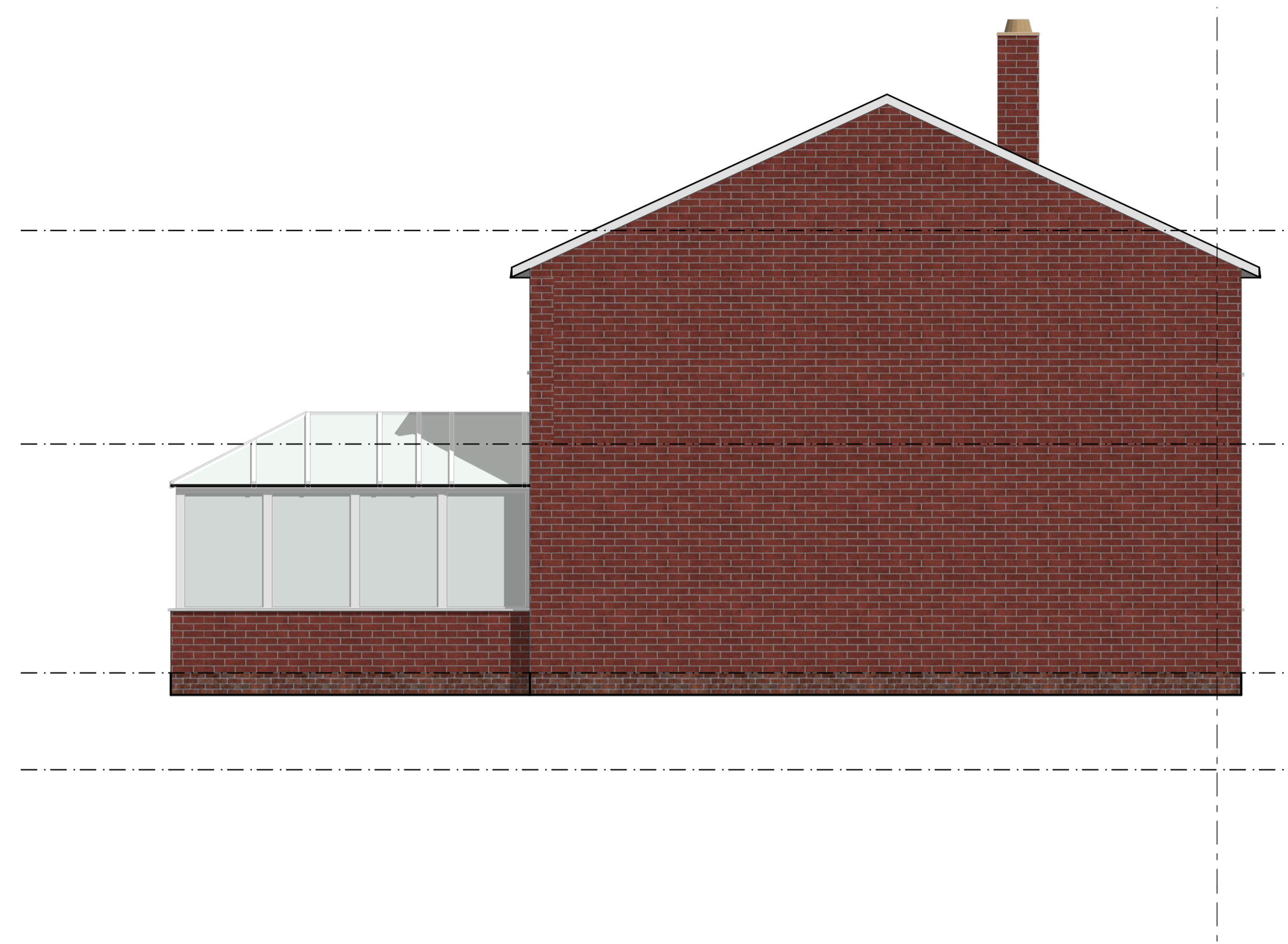
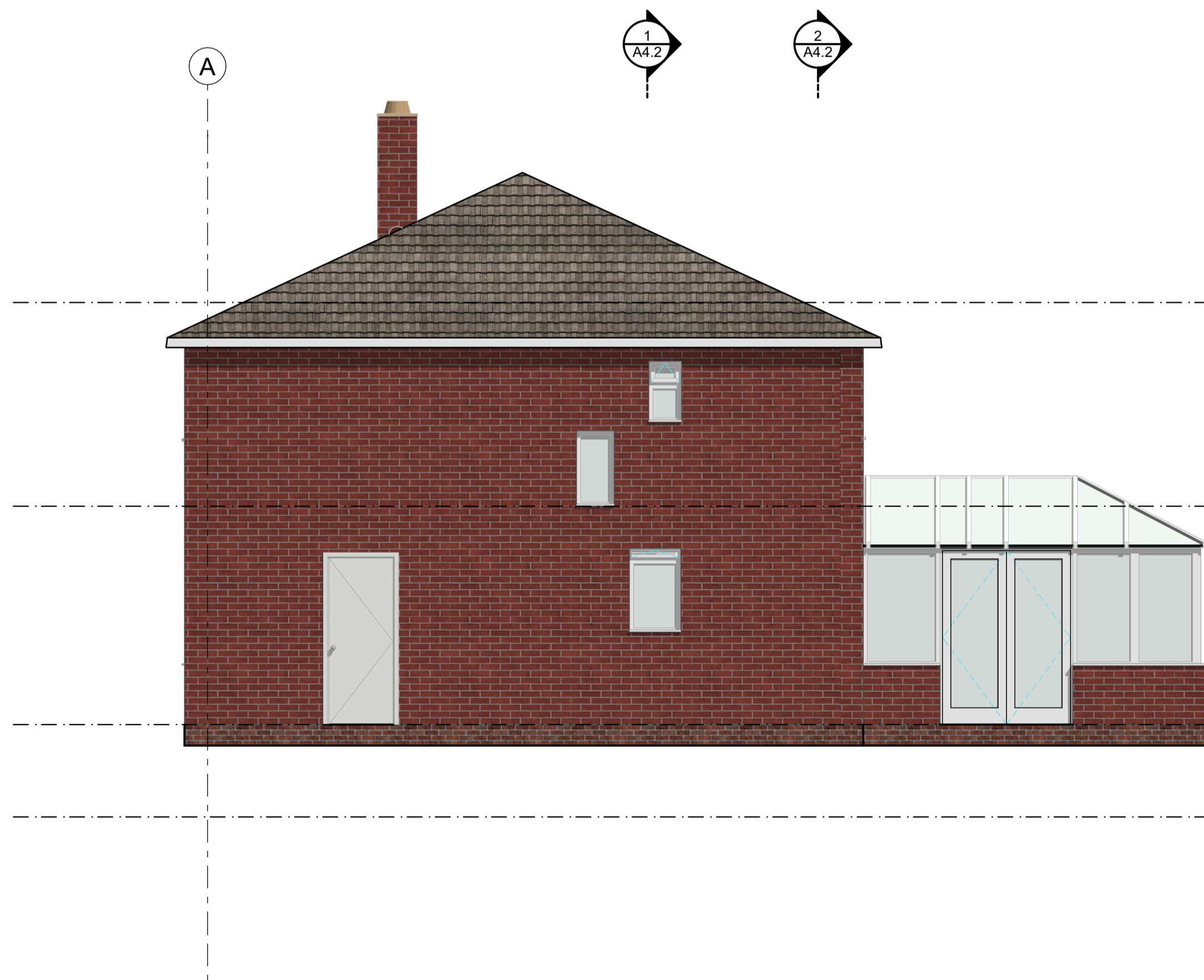


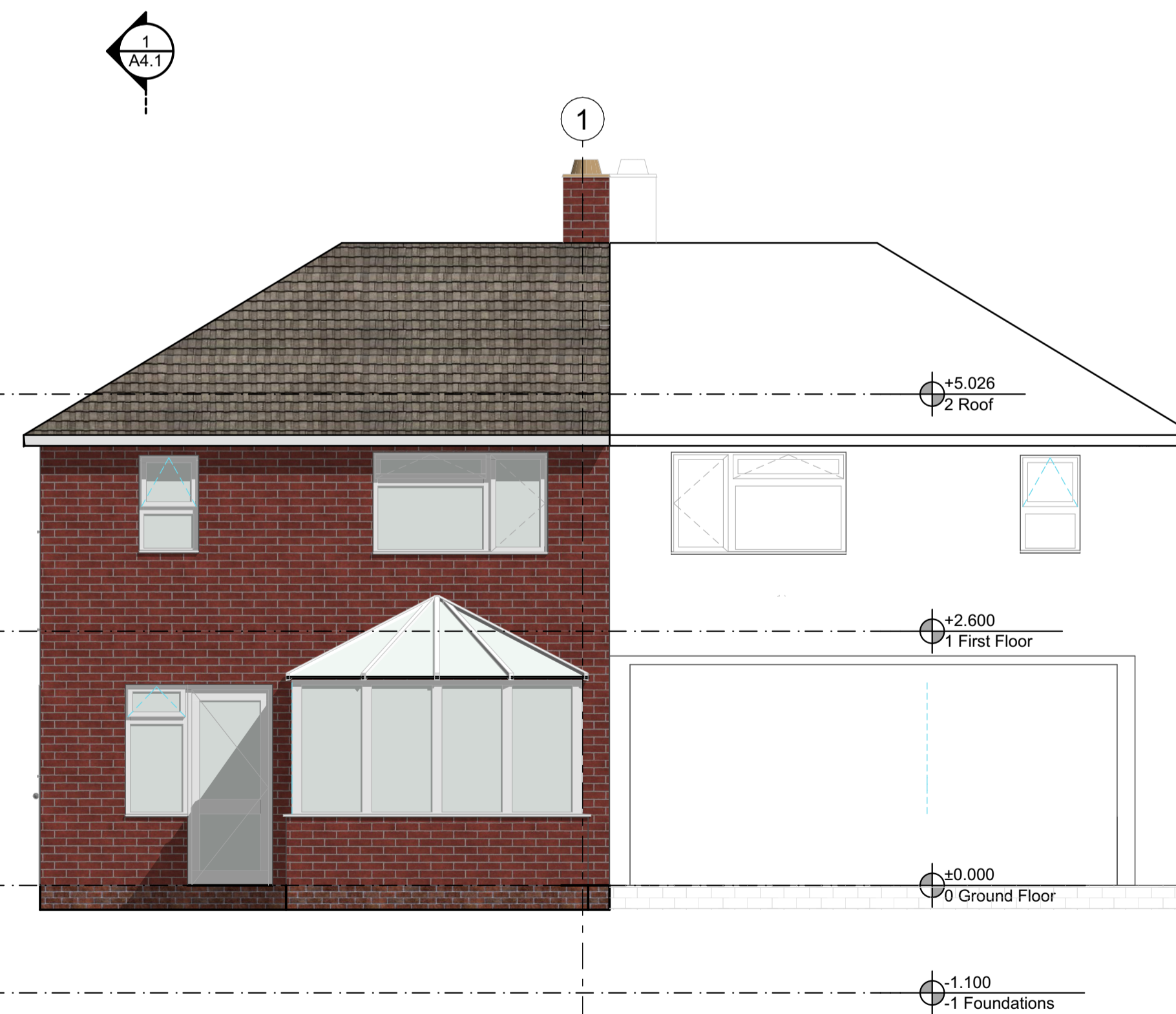
4 4 SOUTH EAST 1:50



1 1 SOUTH WEST 1:50



3 3 NORTH EAST 1:50



2 2 NORTH WEST 1:50

Key Plan		

Construction Risks Maintenance/Cleaning Risks Demolition/Obstruction Risks
 In addition to the hazards/risks normally associated with the types of work detailed on this drawing take note of the above. It is assumed that all works on this drawing will be carried out by a competent contractor working, where appropriate, to an appropriate method statement.
 Safety Health and Environmental Information Box

CDM RISK ASSESSMENT - Refer to A0.3

Revised	Issued	Transmitted	Issue Date	Issue Title	Status	Approved by

Revised	Issued	Transmitted	Issue Date	Issue Title	Status	Approved by

Revised	Issued	Transmitted	Issue Date	Issue Title	Status	Approved by

Revised	Issued	Transmitted	Issue Date	Issue Title	Status	Approved by

Revised	Issued	Transmitted	Issue Date	Issue Title	Status	Approved by

Revised	Issued	Transmitted	Issue Date	Issue Title	Status	Approved by

Revised	Issued	Transmitted	Issue Date	Issue Title	Status	Approved by

Revised	Issued	Transmitted	Issue Date	Issue Title	Status	Approved by

Revised	Issued	Transmitted	Issue Date	Issue Title	Status	Approved by

Revised	Issued	Transmitted	Issue Date	Issue Title	Status	Approved by

Revised	Issued	Transmitted	Issue Date	Issue Title	Status	Approved by

Project	Originator	Volume	Level	Type	Code	Number	Rev
1352 - HBA - XX - ZZ - DR - A -	Hoch-Bau Architecture					A.5.1	

Project	Originator	Volume	Level	Type	Code	Number	Rev
1352 - HBA - XX - ZZ - DR - A -	Hoch-Bau Architecture					A.5.1	

Project	Originator	Volume	Level	Type	Code	Number	Rev
1352 - HBA - XX - ZZ - DR - A -	Hoch-Bau Architecture					A.5.1	