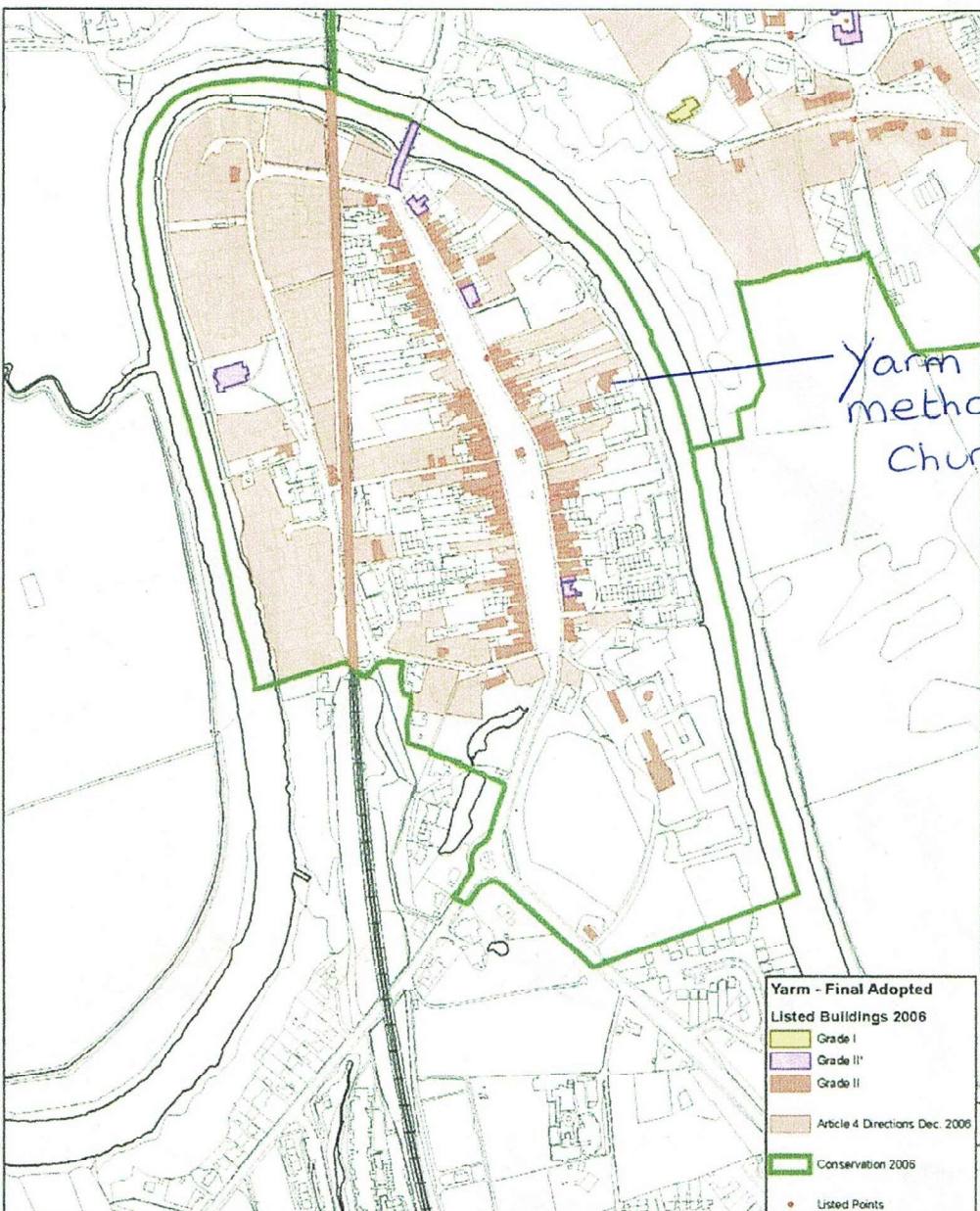


Plan of Yarm Conservation Area showing listed buildings and areas covered by Article 4 Directions



Yarm - Final Adopted

Listed Buildings 2006

- Grade I
- Grade II*
- Grade II
- Article 4 Directions Dec. 2006
- Conservation 2005
- Listed Points



Stockton-on-Tees
BOROUGH COUNCIL

Development & Neighbourhood Services
Corporate Director: N Schneider

Head of Planning & Environment: C Straughan
P O Box 34, Gloucester House, Church Road,
Stockton-on-Tees. TS18 1TW
Telephone: (01642) 393939

This map is reproduced from Ordnance Survey material with the permission of Ordnance Survey on behalf of the Controller of Her Majesty's Stationery Office.
© Crown copyright.
Unauthorised reproduction infringes Crown copyright and may lead to prosecution or civil proceedings.
Stockton-on-Tees Borough Council 100023297 2006

Title Conservation Areas

Date December 2006

Scale N.T.S.