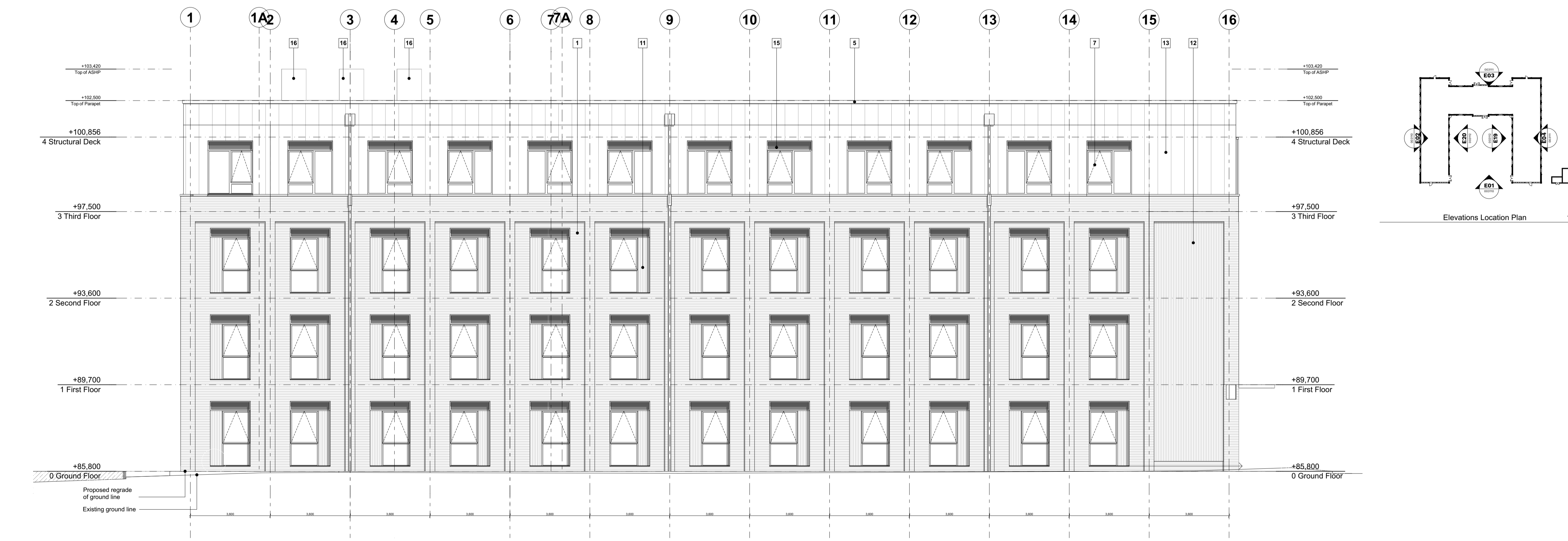


Notes  
 Check all dimensions on site. Do not scale from this drawing  
 Report any discrepancies and omissions to HLM Architects  
 This Drawing is Copyright ©

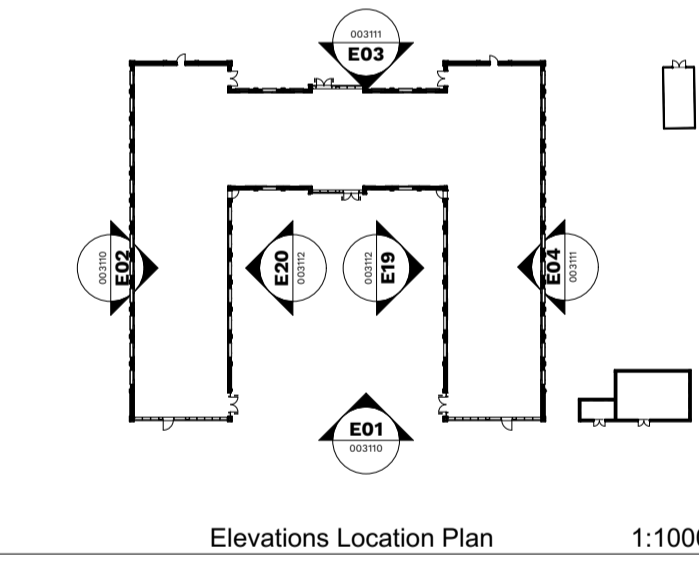
ELEVATION KEY	
1	Red Brickwork Faced Facade
2	Curtain Walling - PPC Aluminium Triple Glazed
3	Main Entrance - PPC Aluminium Triple Glazed
4	U-Value Compliant Modular Roof Deck / Traditional Metal / Composite deck laid to falls, 70% of roof to be covered with PV Renewables
5	PPC Aluminium Coping, Metal Perimeter Hoppers & Downpipes (Anti-Climb provisions to be considered)
6	Fire Escape Door From Internal Fire Escape Stairs
7	PPC Aluminium Face Windows. Generally Top-Hung opening outwards. Windows behind solar shading to be Top-Hung and open inwards.
8	Fire Escape Door From Corridor
9	Rain Water Outlets - Hoppers & Downpipes
10	Opaque back insulated spandrel panel. Front of panel powder coated to match curtain wall/window frame colour.
11	Black Natural Modified Timber Panel
12	Black Natural Modified Timber Cladding
13	Zinc Standing Seam Cladding
14	Powder coated metal solar shading mechanically fixed back to primary building structure. Colour to match window / curtain wall framing.
15	Powder-coated MVHR Intake & Exhaust Louvered Openings
16	Air Source Heat Pump



E01 Southern Elevation 1:100



E02 Western Elevation 1:100



Elevations Location Plan 1:1000

Rev	Description	Date	By	Chk
P06	WINDOW TRANSOMS ADJUSTED	24/02/23	BH	SA
P05	STAGE 4 ISSUE	23/12/08	SOD	BBH
P04	STAGE 4 ISSUE	23/09/15	ZK	HLM
P03	ROOF ACCESS AMENDED - STAIR POP-UP REMOVED AND ROOF HATCH INTRODUCED	23/05/19	ZK	HLM
P02	WINDOW UNIT RAISED 25MM FROM FFL	23/05/16	ZK	HLM
P01	PRELIMINARY ISSUE FOR COMMENT	23/04/23	ZK	HLM

Revisions Suitability  
 Project S3 REVIEW AND COMMENT

**WATTISHAM AIRFIELD**  
**OFFICIAL**

Client  
**DEFENCE INFRASTRUCTURE ORGANISATION**

Title  
**BUILDING 1, GA ELEVATIONS SHEET 1 OF 3-XX-G00400-XX**

Drawing No. Revision  
**Z9A8403Y20-HLM-1-WATT01XXXXX- P06 DR-A-003110-**

Scale @ A1 Drawn  
 1:100 ZK  
 Date Checked  
 14/08/23 HLM

HLM Architects  
 © HLM Architects 2nd Floor Ailsa Court 121 West Regent Street Glasgow G2 2SD  
 www.hlmarchitects.com  
 T. +44 (0) 141 226 8320  
 F. +44 (0) 141 226 8350  
 glasgow@hlmarchitects.com

