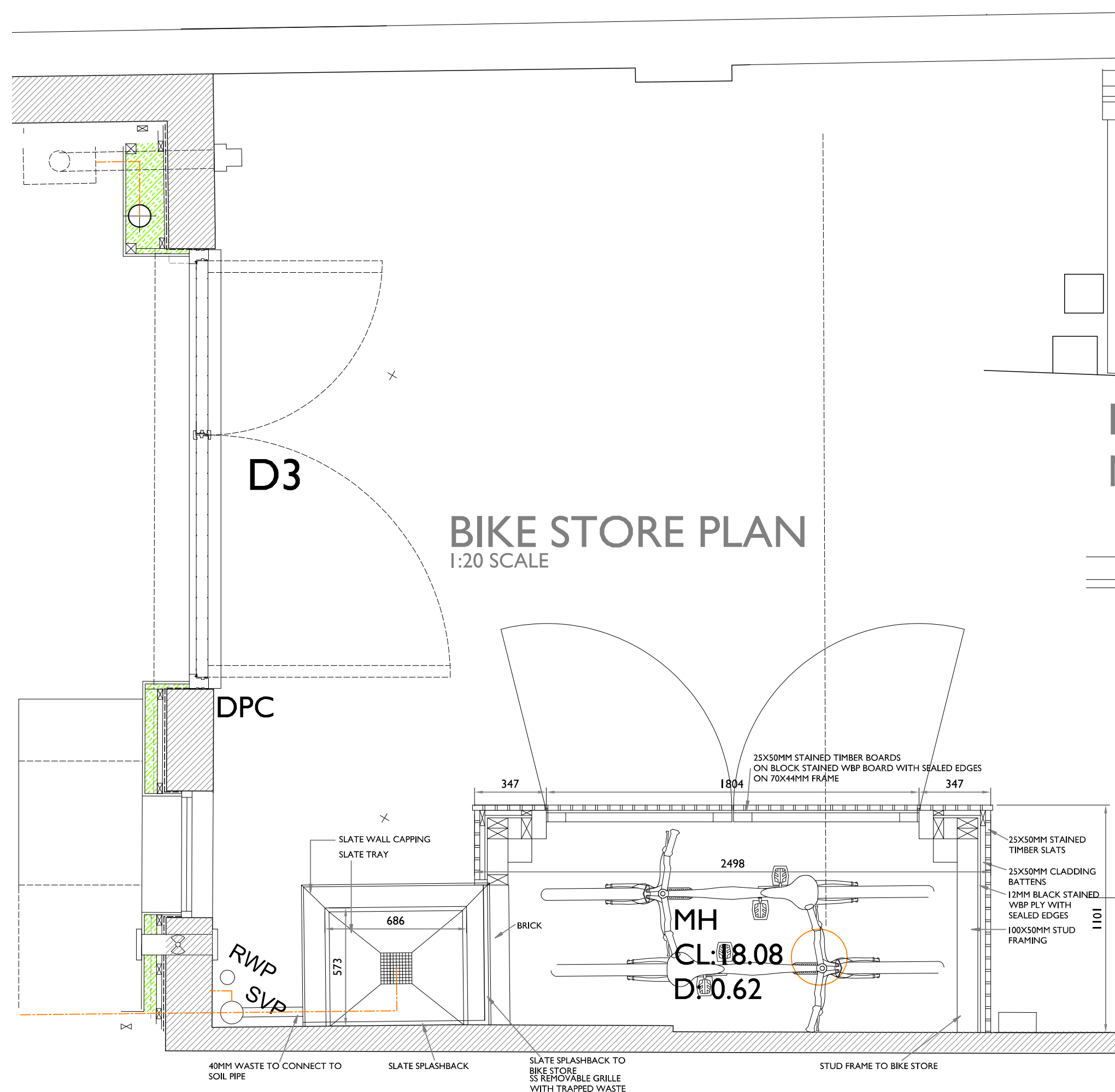
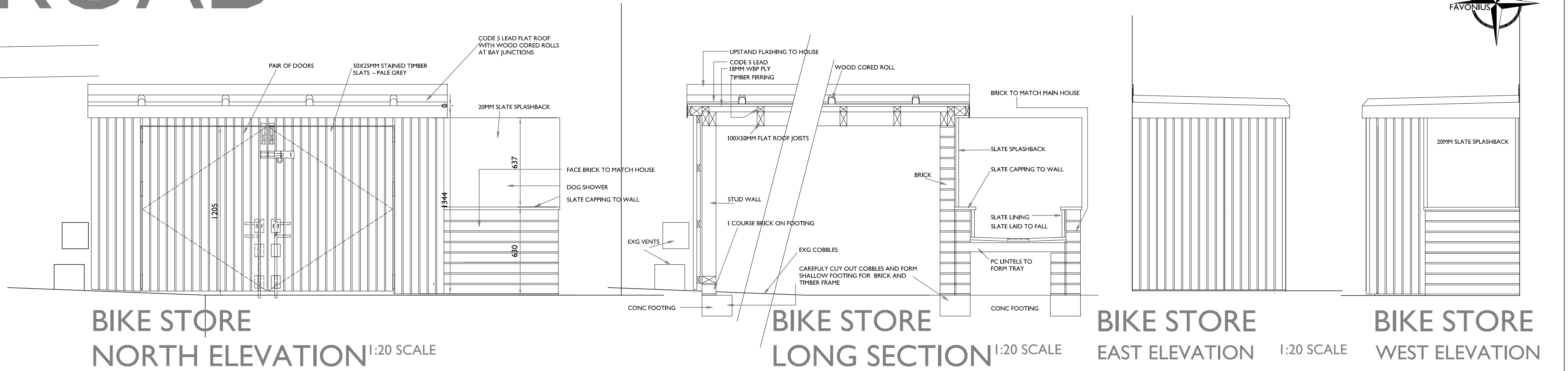


# 2 MACAULAY ROAD



**BIKE STORE PLAN**  
1:20 SCALE



**BIKE STORE NORTH ELEVATION** 1:20 SCALE

**BIKE STORE LONG SECTION** 1:20 SCALE

**BIKE STORE EAST ELEVATION** 1:20 SCALE

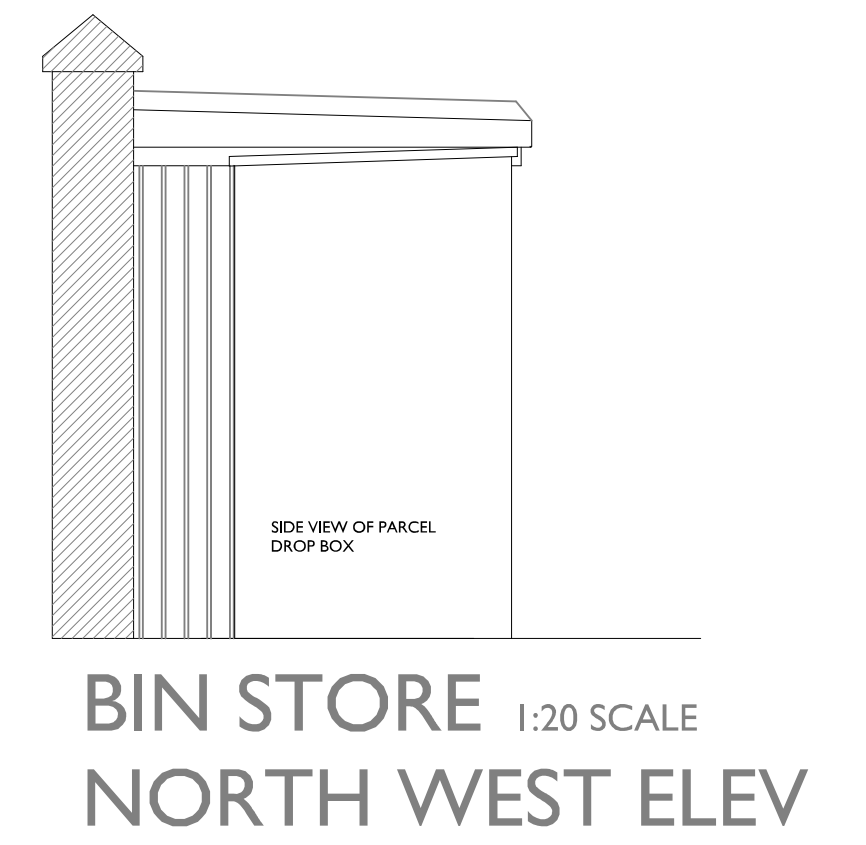
**BIKE STORE WEST ELEVATION**



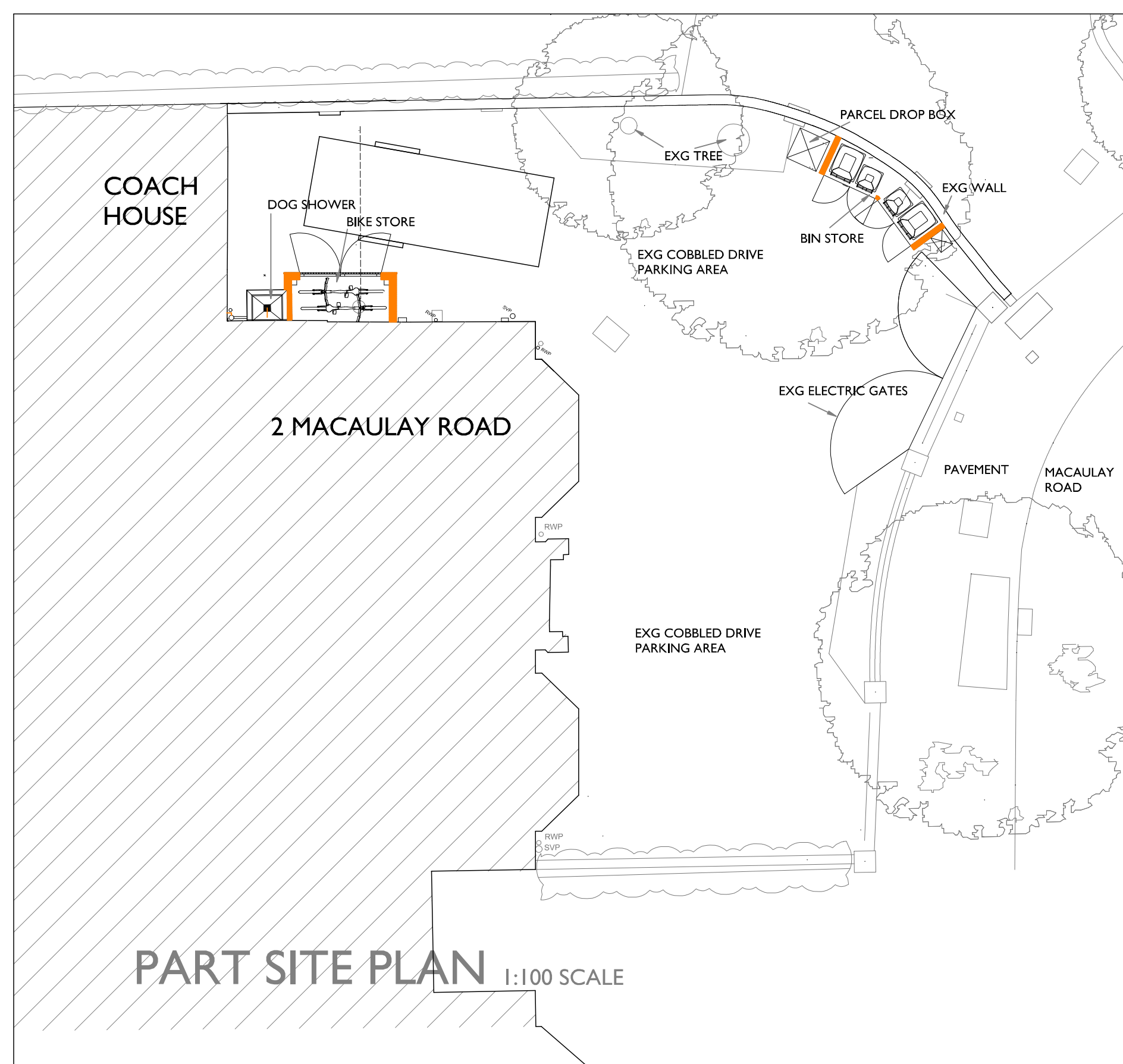
**BIN STORE SOUTH WEST ELEVATION** 1:20 SCALE



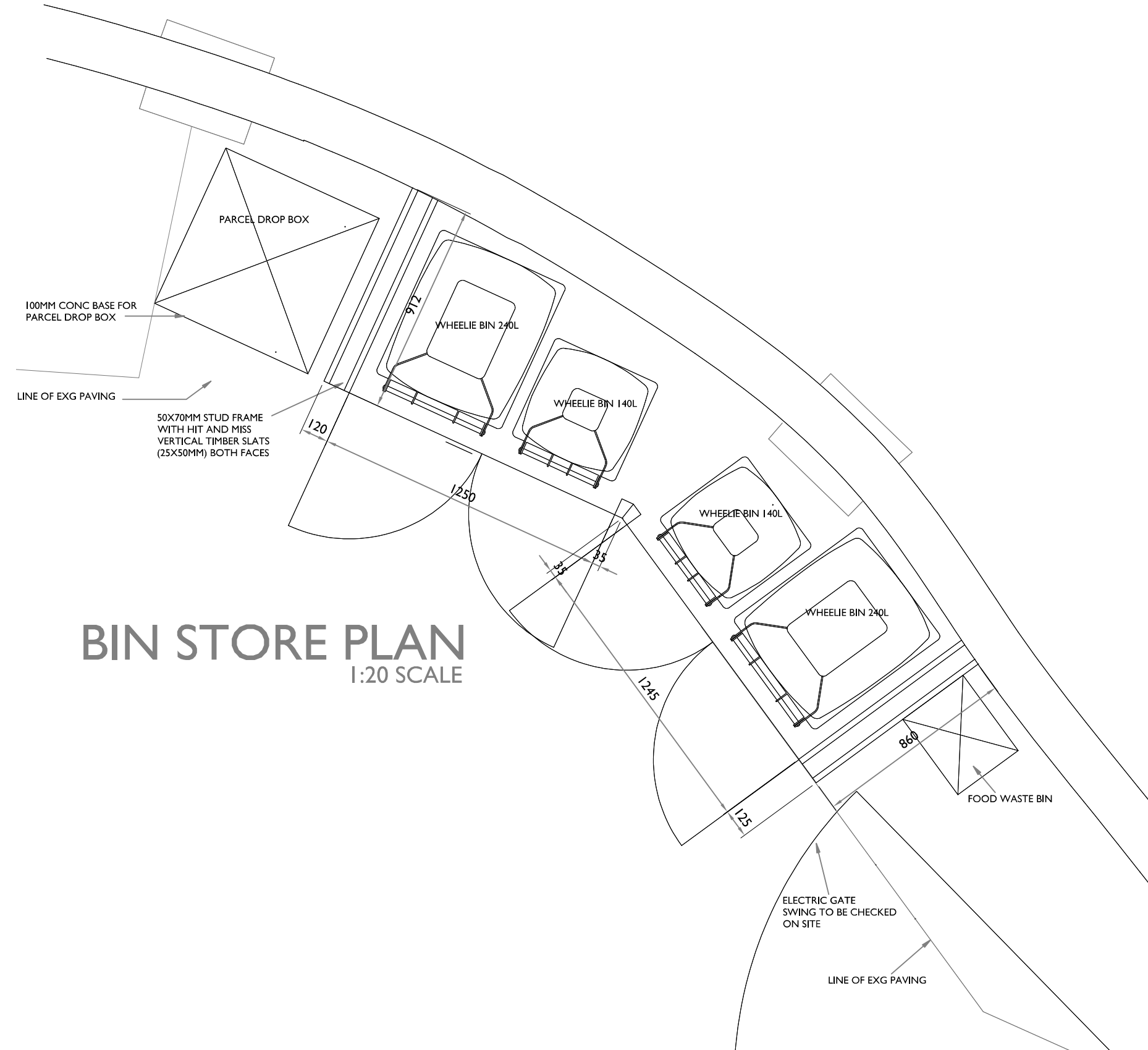
**BIN STORE SOUTH EAST ELEVATION** 1:20 SCALE



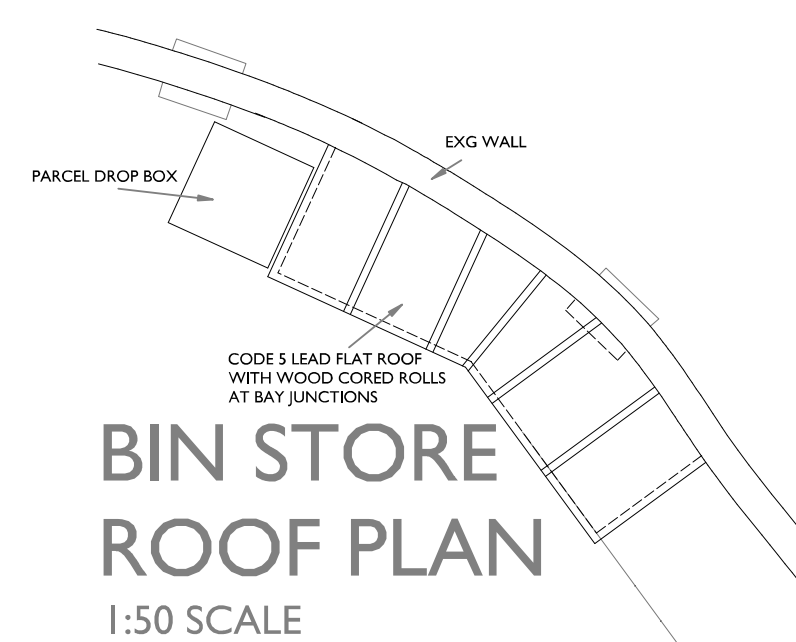
**BIN STORE NORTH WEST ELEVATION** 1:20 SCALE



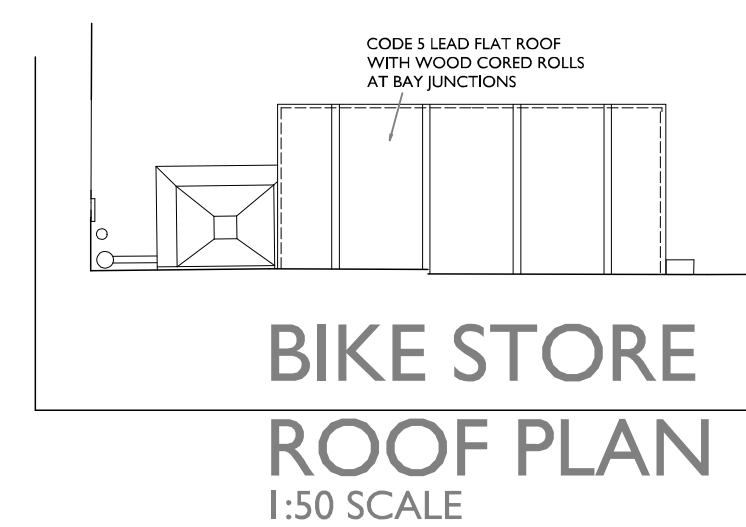
**PART SITE PLAN** 1:100 SCALE



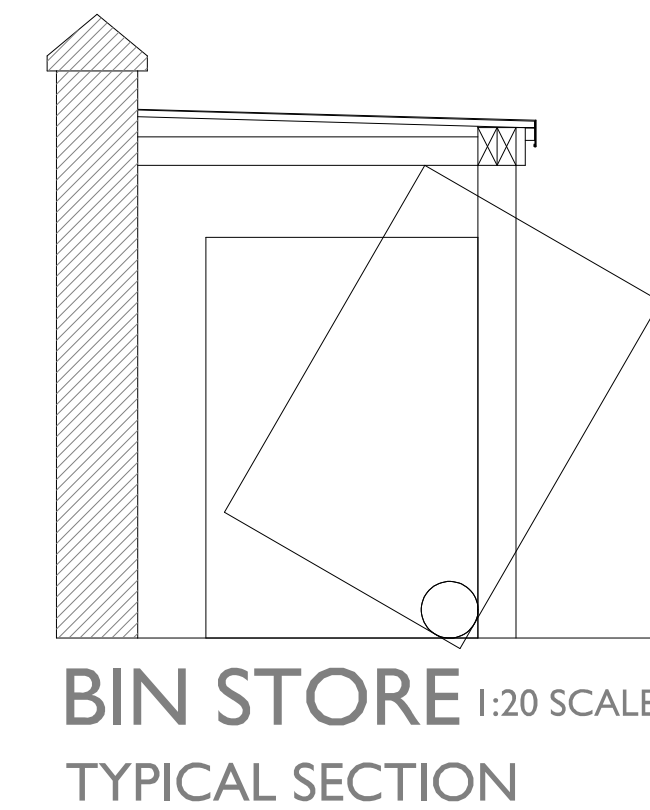
**BIN STORE PLAN** 1:20 SCALE



**BIN STORE ROOF PLAN** 1:50 SCALE

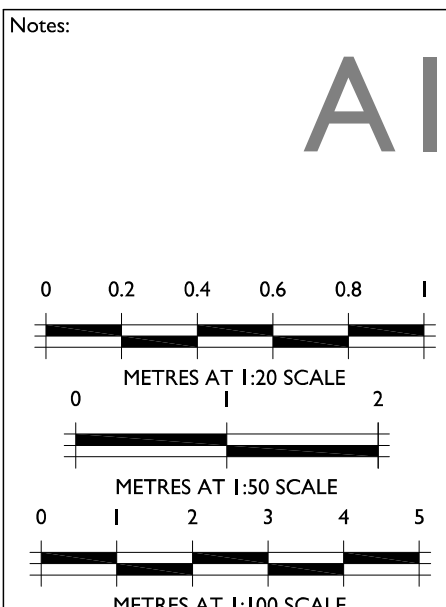


**BIKE STORE ROOF PLAN** 1:50 SCALE



**BIN STORE 1:20 SCALE TYPICAL SECTION**

REV A 15/02/24 NOTES ADDED



Notes:  
2 MACAULAY ROAD  
CLAPHAM  
PROPOSED BIKE AND BIN STORE  
AND PARCEL DROP BOX  
PLANS, SECTIONS AND ELEVATIONS  
BIN AND BIKE STORES

DWG No: 1132-20-01A  
DATE FEB 24 SCALE: 1:100/50/20

**FAVONIUS**  
ARCHITECTS  
Tel: 01722 412 391 www.favonius.co.uk  
Wyndham House, 45 The Close, Salisbury, Wiltshire SP1 2EN

PLANNING APPLICATION