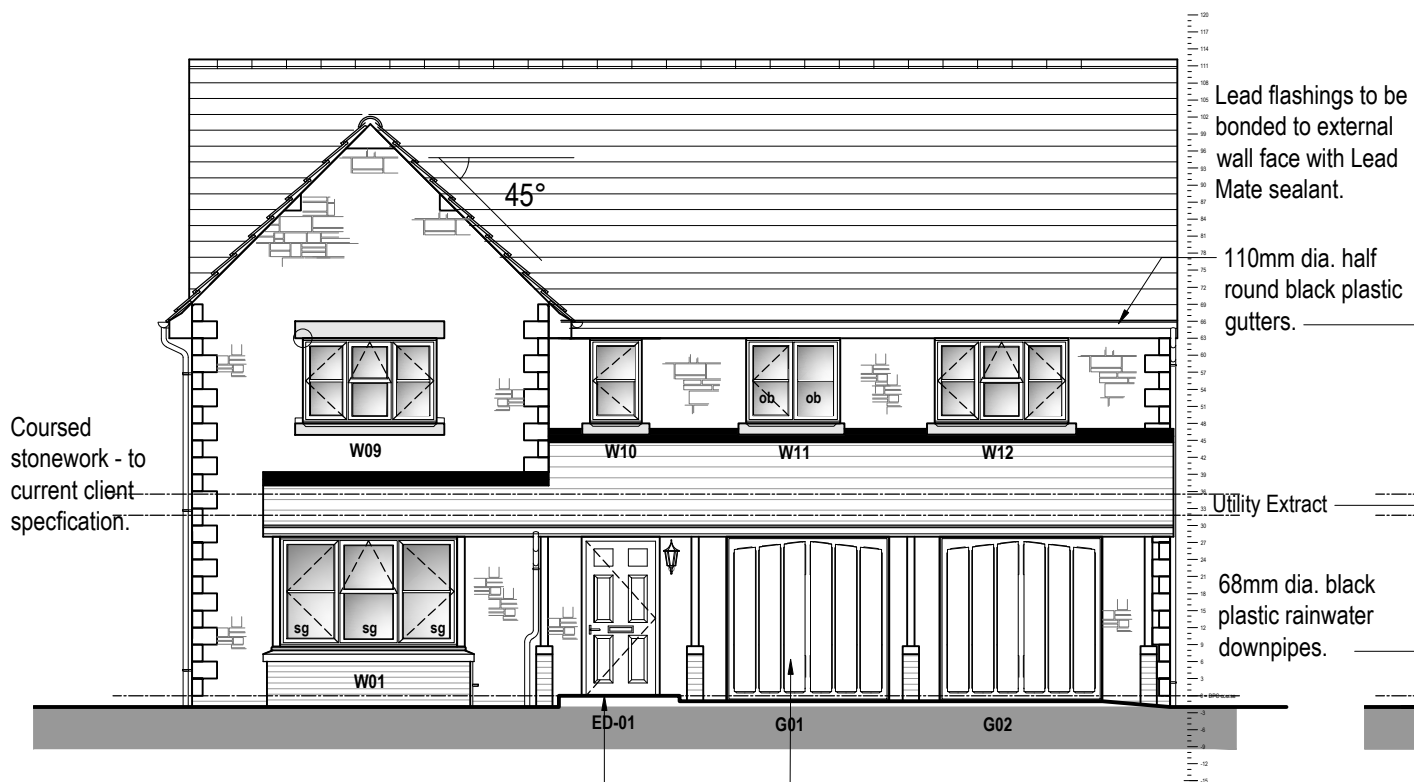


# AMETHYST HOMES THE SAPPHIRE - AS HANDING

All drawings are to be read in conjunction with specification.



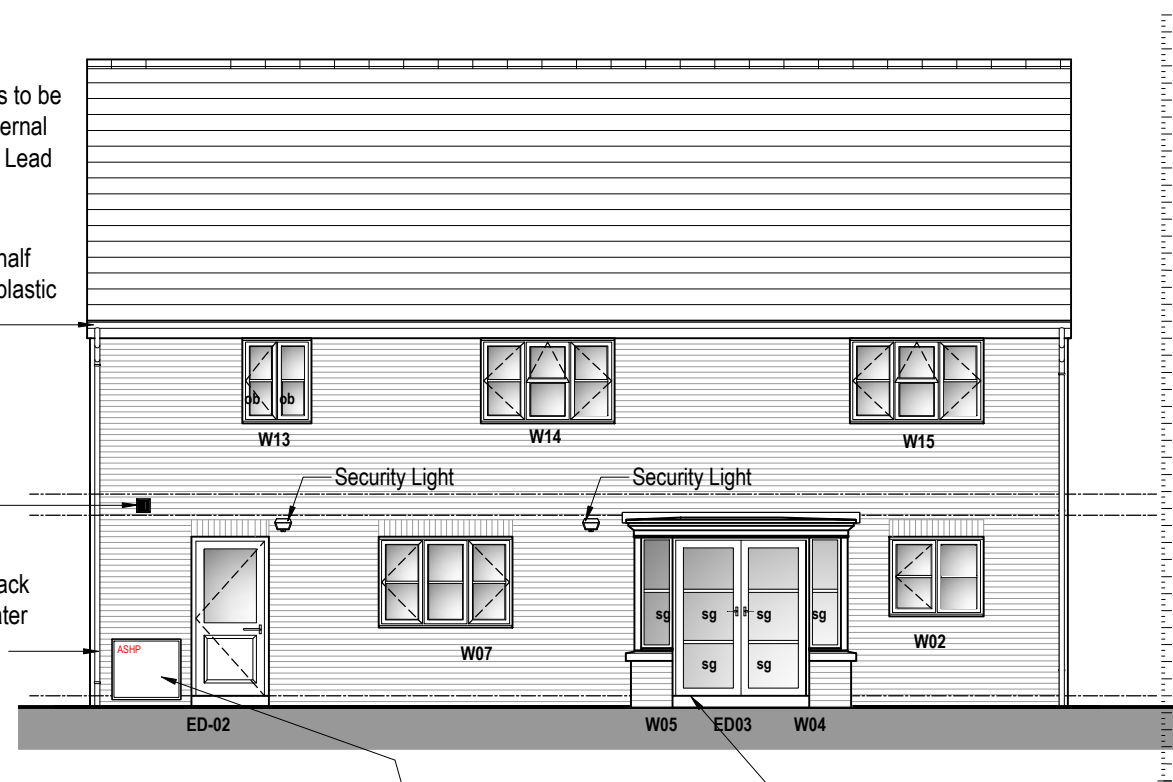
PROPERTY MISDESCRIPTIONS ACT 1991  
(Warning to House Purchasers)  
These drawings, and their contents, are for 'Construction' purposes only and may be subject to change at any time. Alterations and Variations may occur during the construction process, and therefore the layout, form, content, and dimensions of the completed construction may vary from that shown on these drawings. Every effort is made to constantly update the information shown however there may be situations of unavoidable delay due to changes in Statutory Regulations and/or re-planning. Purchasers are advised to check with the Sales Team to ascertain whether there have been any alterations to the printed information.



**FRONT ELEVATION**

Disabled 'LEVEL' access to door D-01, refer separate details

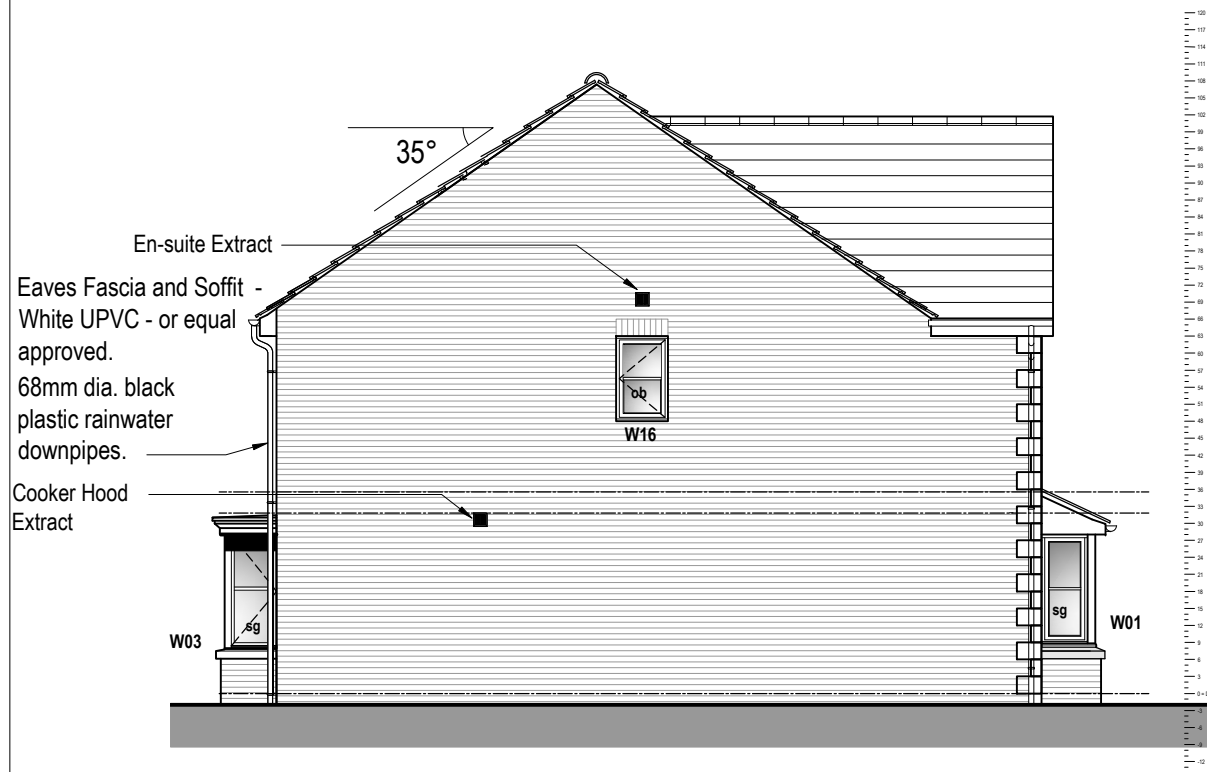
Garage doors: 2134 x 2134mm Hormann 2000 series (or equal approved), Up and Over steel Garage Door. Frame to be fixed behind brickwork, see manufacturers details.



**REAR ELEVATION**

Indicative Position of Air Source heat pump. Note - confirm site specific requirements for provision.

French Doors D-03, outward opening 1800w x 2100h, within Glazed Bay: No vent, safety glass throughout.



**RIGHT GABLE ELEVATION**

## ALTERNATIVE ELEVATIONS - 1-100 Scale @ A3



**LEFT GABLE ELEVATION**

## STONE OPTION

REV	DATE	DESCRIPTION	BY	CHK

**MWE** Architects  
Mauchlen Weightman & Elphick  
Heriot House  
12 Summerhill Terrace  
Newcastle Upon Tyne  
NE4 6EB  
Telephone: (0191) 260 2299  
Fax: (0191) 260 3340  
Email: enquiries@mwearchitects.co.uk

Client

### Amethyst Homes

Project

#### STANDARD HOUSE TYPES

Description

#### The Sapphire ALTERNATIVE STONE ELEVATIONS

Project Ref.	<b>12009</b>	Dwg No.	<b>SPR-023</b>
Scale:	1:100 @ A3	Rev.	
Date:	20.07.2023		
Drawn by:	TSP.		
Checked by:		Date:	

THIS DRAWING IS COPYRIGHT. CONTRACTORS MUST CHECK ALL DIMENSIONS ON SITE. ONLY FIGURED DIMENSIONS ARE TO BE WORKED FROM. DISCREPANCIES MUST BE REPORTED IMMEDIATELY TO THE ARCHITECTS BEFORE PROCEEDING.