

# AMETHYST HOMES THE PERIDOT

All drawings are to be read in conjunction with specification.



PROPERTY MISDESCRIPTIONS ACT 1991  
(Warning to House Purchasers)  
These drawings, and their contents, are for 'Construction' purposes only and may be subject to change at any time.  
Alterations and Variations may occur during the construction process, and therefore the layout, form, content, and dimensions of the completed construction may vary from that shown on these drawings.  
Every effort is made to constantly update the information shown however there may be situations of unavoidable delay due to changes in Statutory Regulations and/or re-planning. Purchasers are advised to check with the Sales Team to ascertain whether there have been any alterations to the printed information.



Soffit and Barge boards  
- White UPVC - or equal approved.

110mm dia. half round  
black plastic gutters.

68mm dia. black  
plastic rainwater  
downpipes.



Eaves Fascia and  
Soffit - White UPVC -  
or equal approved.

## LEFT GABLE ELEVATION

Lead flashings to be bonded to external wall face with Lead Mate sealant.

Render - Monocouche Scratch Finish - colour Ivory or equal approved. Render bed reinforcement to be provided in the first two courses of external masonry, above and below openings. Where possible reinforcement to project 600mm beyond the opening. All in accordance with Warranty provider requirements and BCO.

## RIGHT GABLE ELEVATION

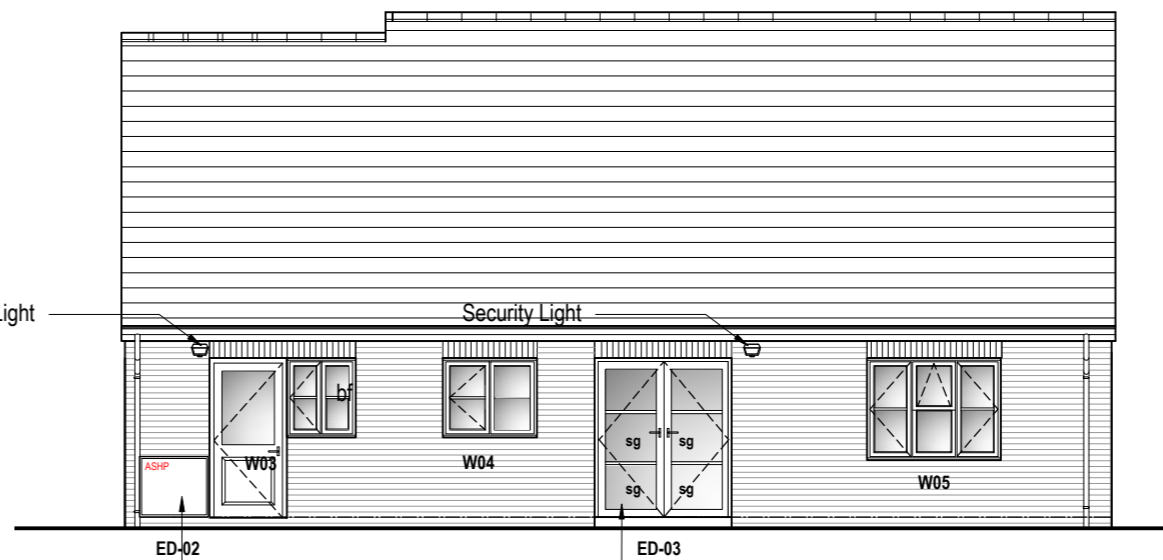
**KEY**  
sg - Safety Glazing.  
ob - Obscure glazing  
ex - extract  
bf - boiler flue  
sr - svp ridge vent  
sl - security light



## FRONT ELEVATION

Disabled 'LEVEL' access to door ED-01, refer separate details

Garage doors: 2134 x 2134mm Hormann 2000 series (or equal approved), Up and Over steel Garage Door. Frame to be fixed behind brickwork, see manufacturers details.



## REAR ELEVATION

Indicative Position of Air Source heat pump.  
Note - confirm site specific requirements for provision.

French Doors ED-03 outward opening 1800w x 2100h: No vent, safety glass throughout.

## ELEVATIONS - 1-100 Scale @ A3

## RENDER OPTION

REV	DATE	DESCRIPTION	BY	CHK

**MWE** Mauchlen Weightman & Elphick Architects  
 Chartered Architects  
 Town Planning Consultants  
 Planning Supervisors  
 Project Managers

Heriot House  
 12 Summerhill Terrace  
 Newcastle Upon Tyne  
 NE4 6EB

Telephone: (0191) 260 2299  
 Fax: (0191) 260 3340  
 Email: enquiries@mwearchitects.co.uk

Client  
**Amethyst Homes**

Project  
**STANDARD HOUSE TYPES**

Description  
**The Peridot  
 ELEVATIONS - RENDER VARIATION**

Project Ref.	<b>12009</b>	Dwg No.	<b>PDT-016</b>
Scale:	1:100 @ A3	Rev.	
Date:	Nov 2019		
Drawn by:	TSP		
Checked by:		Date:	

THIS DRAWING IS COPYRIGHT. CONTRACTORS MUST CHECK ALL DIMENSIONS ON SITE. ONLY FIGURED DIMENSIONS ARE TO BE WORKED FROM. DISCREPANCIES MUST BE REPORTED IMMEDIATELY TO THE ARCHITECTS BEFORE PROCEEDING.