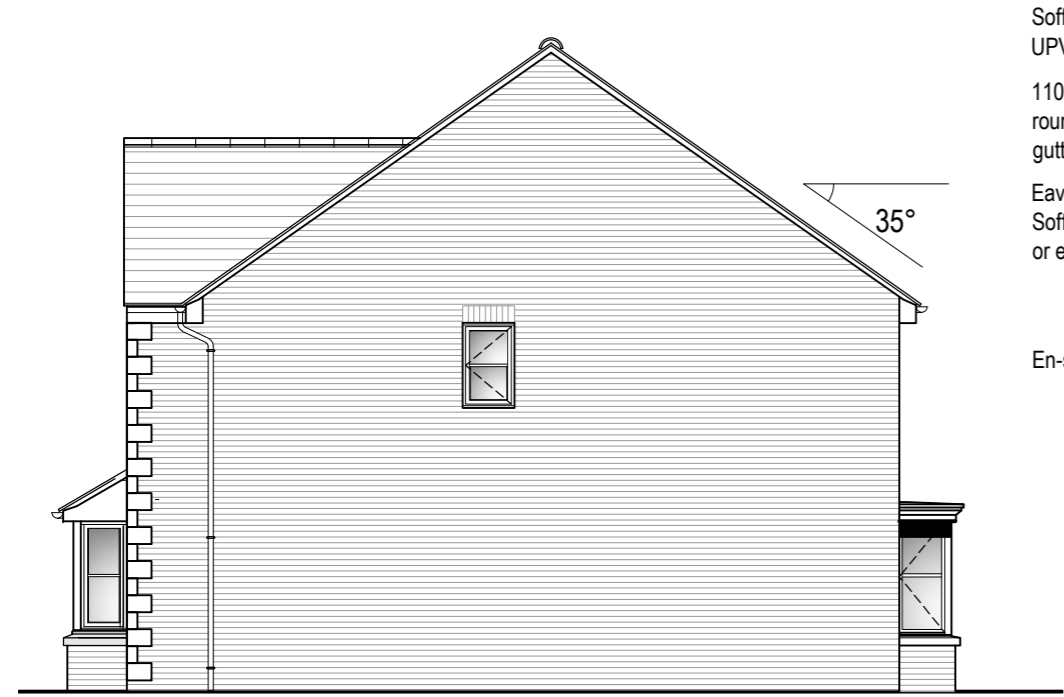


AMETHYST HOMES THE RUBY - AS HANDING

All drawings are to be read in conjunction with specification.



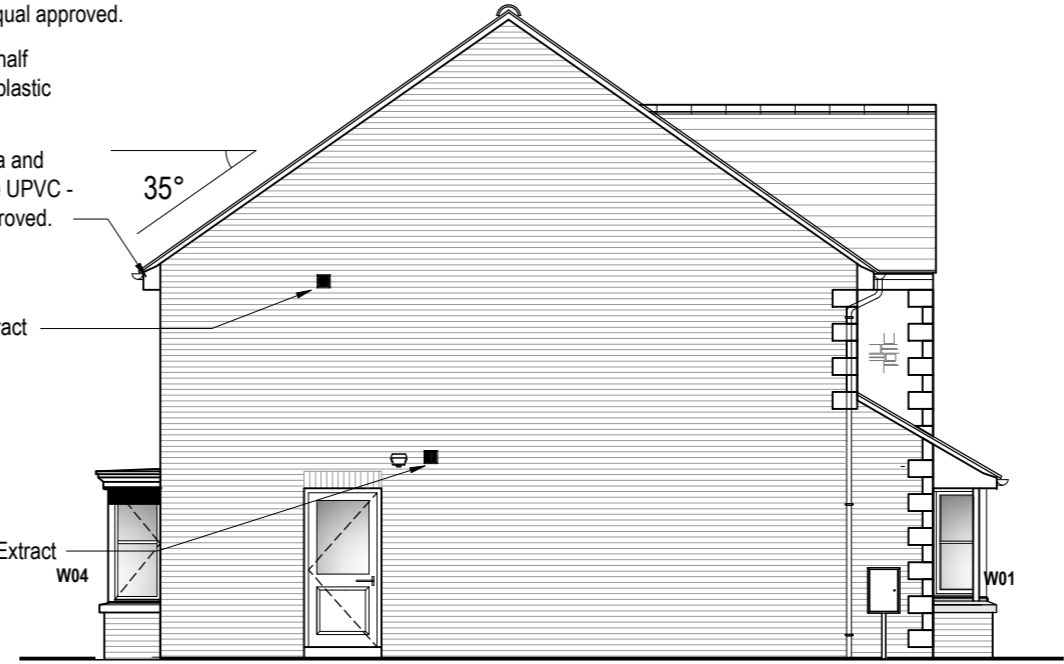
PROPERTY MISDESCRIPTIONS ACT 1991
(Warning to House Purchasers)
These drawings, and their contents, are for 'Construction' purposes only and may be subject to change at any time.
Alterations and Variations may occur during the construction process, and therefore the layout, form, content, and dimensions of the completed construction may vary from that shown on these drawings.
Every effort is made to constantly update the information shown however there may be situations of unavoidable delay due to changes in Statutory Regulations and/or re-planning. Purchasers are advised to check with the Sales Team to ascertain whether there have been any alterations to the printed information.



RIGHT GABLE ELEVATION

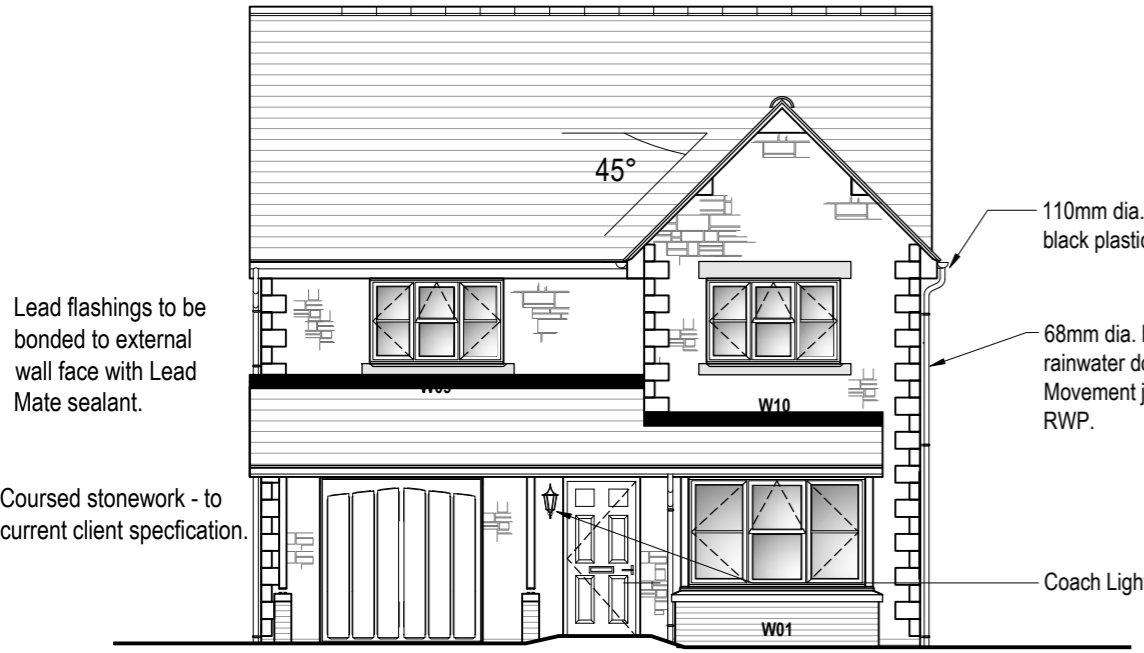
Soffit and Barge boards - White UPVC - or equal approved.
110mm dia. half round black plastic gutters.
Eaves Fascia and Soffit - White UPVC - or equal approved.

En-suite Extract
Utility Extract W04



LEFT GABLE ELEVATION

KEY
sg - Safety Glazing.
ob - Obscure glazing



FRONT ELEVATION



REAR ELEVATION

Indicative Position of Air Source heat pump.
NOTE - confirm site specific requirements for provision.

French Doors D-03, outward opening 1800w x 2100h: No vent, safety glass throughout.

STONE OPTION

ALTERNATIVE ELEVATIONS - 1-100 Scale @ A3

REV	DATE	DESCRIPTION	BY	CHK

MWE
Mauchlen Weightman & Elphick Architects
Chartered Architects
Town Planning Consultants
Planning Supervisors
Project Managers

Heriot House
12 Summerhill Terrace
Newcastle Upon Tyne
NE4 6EB

Telephone: (0191) 260 2299
Fax: (0191) 260 3340
Email: enquiries@mwearchitects.co.uk

Client
Amethyst Homes

Project
STANDARD HOUSE TYPES

Description
**THE RUBY
ALTERNATIVE STONE ELEVATIONS**

Project Ref.	12009	Dwg No.	RBY-020
Scale:	1:100 @ A3	Rev.	
Date:	12.07.2023		
Drawn by:	TSP		
Checked by:		Date:	

THIS DRAWING IS COPYRIGHT. CONTRACTORS MUST CHECK ALL DIMENSIONS ON SITE. ONLY FIGURED DIMENSIONS ARE TO BE WORKED FROM. DISCREPANCIES MUST BE REPORTED IMMEDIATELY TO THE ARCHITECTS BEFORE PROCEEDING.