

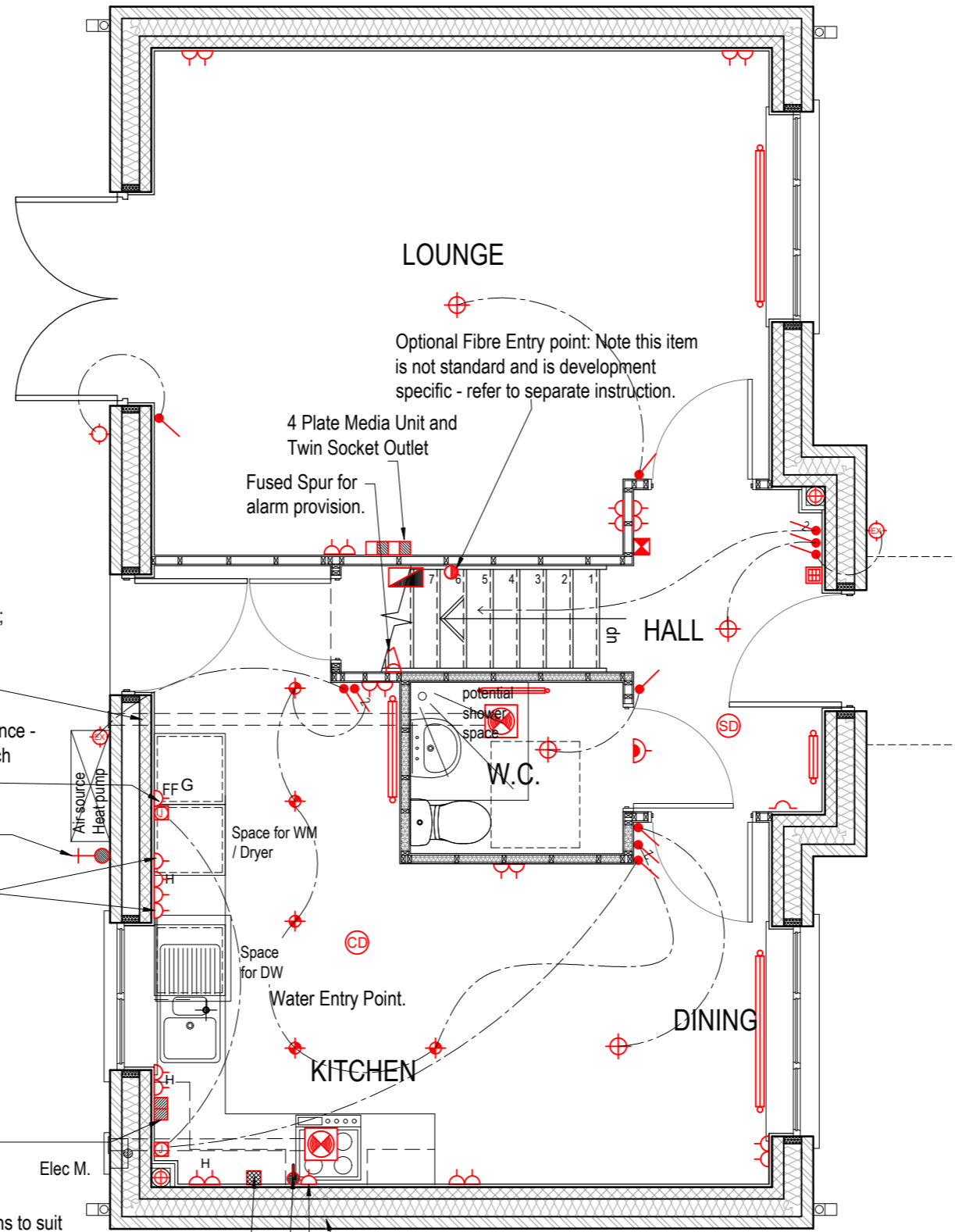
AMETHYST HOMES THE JADE - AS HANDING

All drawings are to be read in conjunction with specification.



ELECTRICAL SYMBOLS KEY:

	Twin / single tube luminaire, 58W daylight tubes.
	Basin pelmet light with integrated switch.
	Pendant ceiling lightfitting; energy efficient lamp.
	Batten lightfitting; energy efficient lamp.
	Recessed downlighter fitting:
	Water proof recessed downlighter fitting.
	Wall light.
	External lightfitting.
	Location of Tri-lights below kitchen wall units.
	Single light switch.
	Two-way light switch.
	Immersion Switch.
	Coker Outlet
	Single switched socket outlet.
	13 amp double switched socket outlet. 400 above floor unless indicated; H - High level / above worktop.
	Fused indicator spur.
	Extract Fan isolator switch with 'FAN' label/symbol @ H.L. above door.
	Covered weather proof double socket outlet for external application.
	Junction Box.
	Coker Control Point
	Multi gang switch
	Shaver Socket.
	Volex Consumer Unit.
	T.V. aerial socket with coaxial cable to roof void / aerial.
	Telephone point.
	4 Plate Media Unit (TV Aerial / Telephone / SKY)
	Fibre Entry point - Optional (development specific item).
	Smoke detectors.
	Carbon Monoxide detectors.
	Radiators Single / double radiators, high output, thermostatic valves.
	Radiator: Combination towel rail / radiator to Bathrooms & En-suites.
	Heating control panel.
	Shower Controls
	Alarm Key Pad
	Mechanical air extract fan linked to light switch, Ventilation grill and duct to external wall extract point / Roof vent tile as indicated.
	Gas Point.
	External water tap.
	Doorbell.
	Door Chime.
	Car Charging Point



Extract duct to run through floor void above; Extract through external wall; Terminate with ventilation grille.

Single Sockets for appliance - Wired to Multi-gang switch under unit.

Optional external water tap

Single Socket(s) for Appliance(s).

Multi Gang switch for F/F, DW, Oven and Coker Hood

Kitchen waste connections to suit Kitchen Layout.

Coker control point.

Socket above wall unit for Coker Hood.

Socket above wall unit for Coker Hood.

LOUNGE

Optional Fibre Entry point: Note this item is not standard and is development specific - refer to separate instruction.

4 Plate Media Unit and Twin Socket Outlet

Fused Spur for alarm provision.

HALL

W.C.

Space for WM / Dryer

Space for DW

Water Entry Point.

KITCHEN

DINING

Elec M.

Extract duct to run through floor void above; Extract through external wall; Terminate with ventilation grille.

PROPERTY MISDESCRIPTIONS ACT 1991 (Warning to House Purchasers)
These drawings, and their contents, are for 'Construction' purposes only and may be subject to change at any time.
Alterations and Variations may occur during the construction process, and therefore the layout, form, content, and dimensions of the completed construction may vary from that shown on these drawings.
Every effort is made to constantly update the information shown however there may be situations of unavoidable delay due to changes in Statutory Regulations and/or re-planning. Purchasers are advised to check with the Sales Team to ascertain whether there have been any alterations to the printed information.

REV	DATE	DESCRIPTION	BY	CHK
-----	------	-------------	----	-----

MWE
Mauchlen Weightman & Elphick
Architects
Chartered Architects
Town Planning Consultants
Planning Supervisors
Project Managers
Heriot House
12 Summerhill Terrace
Newcastle Upon Tyne
NE4 6EB
Telephone: (0191) 260 2299
Fax: (0191) 260 3340
Email: enquiries@mwearchitects.co.uk

Client

Amethyst Homes

Project

STANDARD HOUSE TYPES

Description

The Jade
GROUND FLOOR - M&E LAYOUT

Project Ref.	12009	Dwg No.	JDE-013
Scale:	1:50 @ A3	Rev.	■
Date:	08.08.2023	Checked by:	
Drawn by:	TSP	Date:	

THIS DRAWING IS COPYRIGHT: CONTRACTORS MUST CHECK ALL DIMENSIONS ON SITE. ONLY FIGURED DIMENSIONS ARE TO BE WORKED FROM. DISCREPANCIES MUST BE REPORTED IMMEDIATELY TO THE ARCHITECTS BEFORE PROCEEDING.