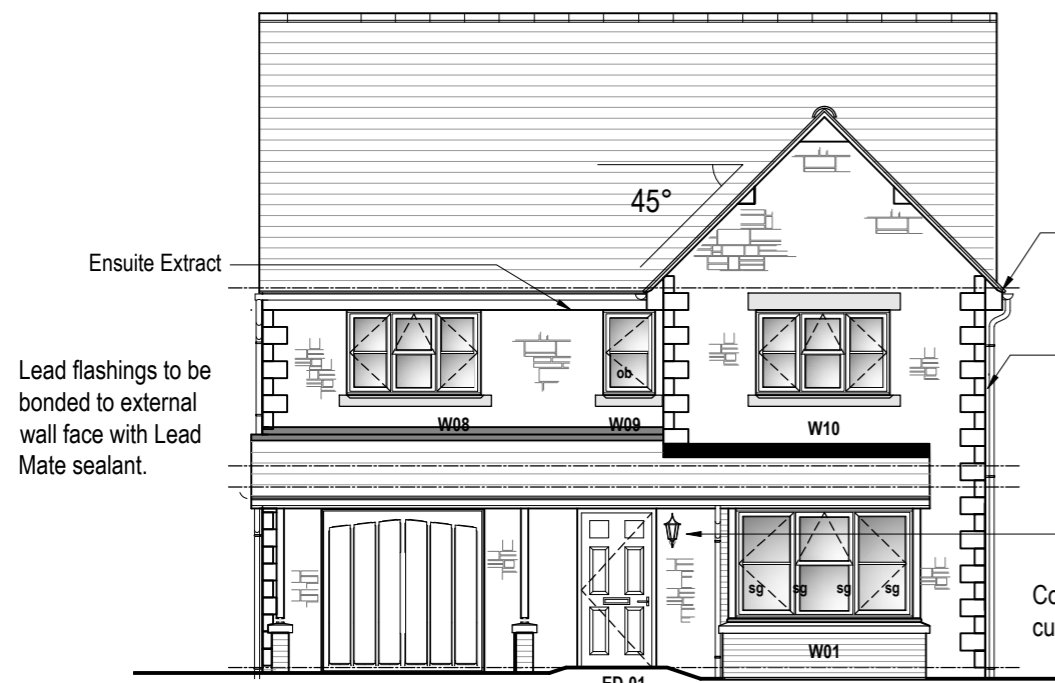


AMETHYST HOMES THE EMERALD - AS HANDING

All drawings are to be read in conjunction with specification.



PROPERTY MISDESCRIPTIONS ACT 1991 (Warning to House Purchasers)
These drawings, and their contents, are for 'Construction' purposes only and may be subject to change at any time.
Alterations and Variations may occur during the construction process, and therefore the layout, form, content, and dimensions of the completed construction may vary from that shown on these drawings.
Every effort is made to constantly update the information shown however there may be situations of unavoidable delay due to changes in Statutory Regulations and/or re-planning. Purchasers are advised to check with the Sales Team to ascertain whether there have been any alterations to the printed information.



Garage door: 2134 x 2134mm Hormann 2000 series (or equal approved), Up and Over steel Garage Door. Frame to be fixed behind brickwork, see manufacturers details.

Disabled 'LEVEL' access to door D-01, refer separate details

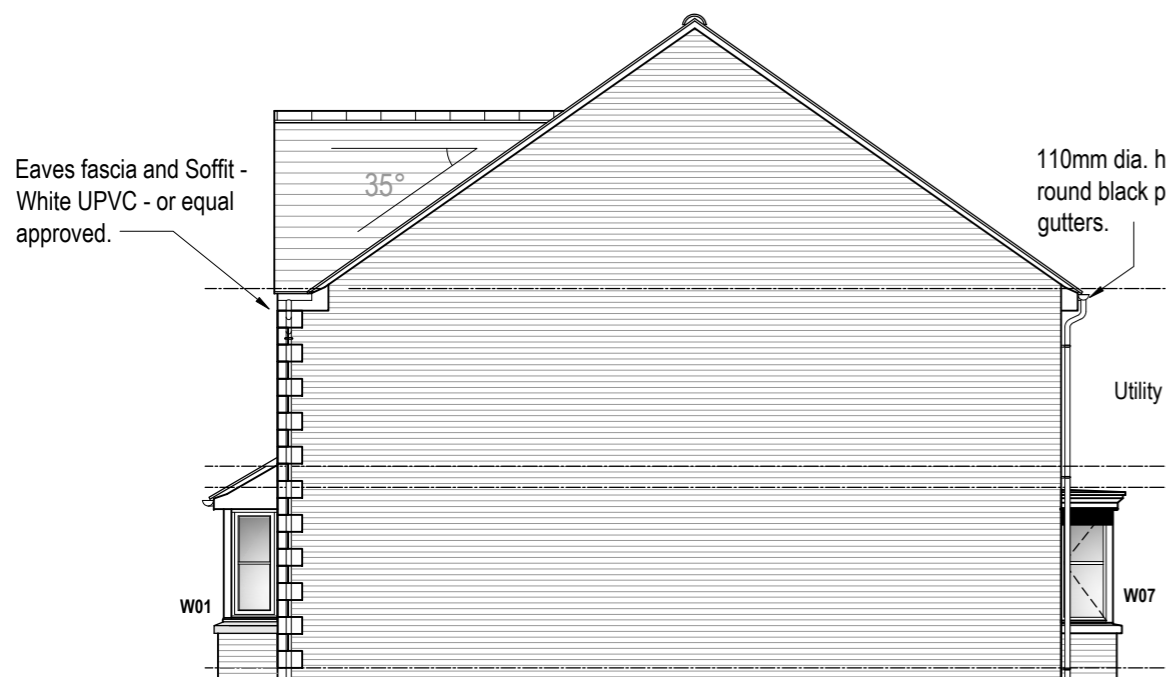
FRONT ELEVATION



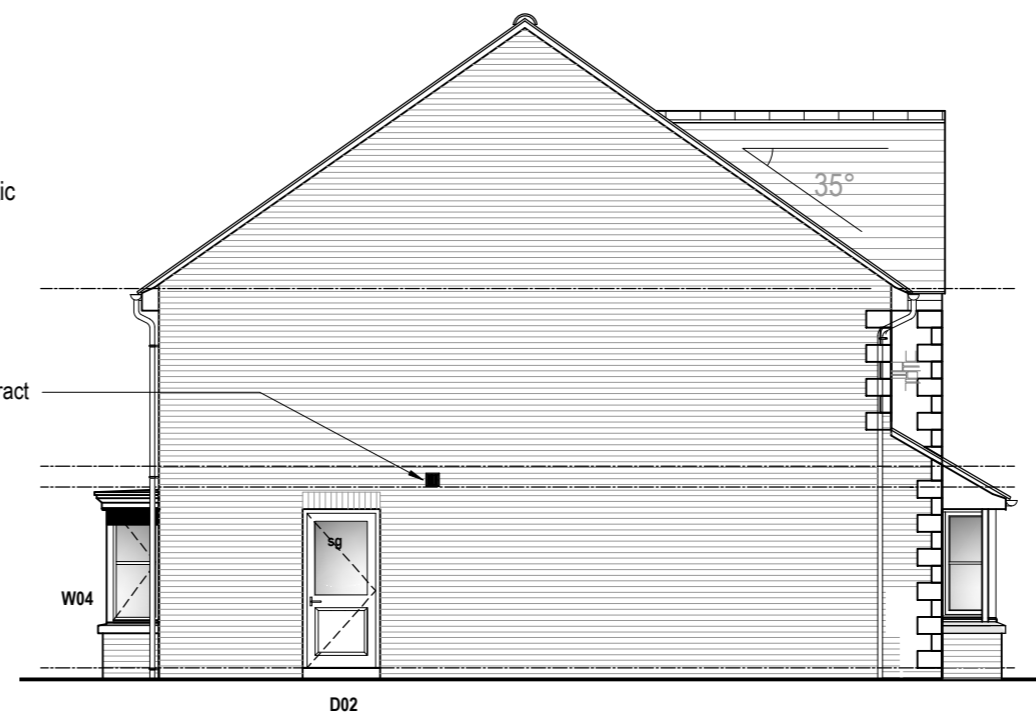
REAR ELEVATION

French Doors D-03, outward opening 1800w x 2100h: No vent, safety glass throughout.

KEY
sg - Safety Glazing.
ob - Obscure glazing



RIGHT GABLE ELEVATION



LEFT GABLE ELEVATION

ALTERNATIVE ELEVATIONS - 1-100 Scale @ A3

STONE OPTION

REV	DATE	DESCRIPTION	BY	CHK

MWE Architects
Mauchlen Weightman & Elphick
Chartered Architects
Town Planning Consultants
Planning Supervisors
Project Managers
Heriot House
12 Summerhill Terrace
Newcastle Upon Tyne
NE4 6EB
Telephone: (0191) 260 2299
Fax: (0191) 260 3340
Email: enquiries@mwearchitects.co.uk

Client

Amethyst Homes

Project

STANDARD HOUSE TYPES

Description
The Emerald
ALTERNATIVE STONE ELEVATIONS

Project Ref.	12009	Dwg No.	EMD-026
Scale:	1:100 @ A3	Rev.	
Date:	19.07.2023		
Drawn by:	TSP		
Checked by:		Date:	

THIS DRAWING IS COPYRIGHT. CONTRACTORS MUST CHECK ALL DIMENSIONS ON SITE. ONLY FIGURED DIMENSIONS ARE TO BE WORKED FROM. DISCREPANCIES MUST BE REPORTED IMMEDIATELY TO THE ARCHITECTS BEFORE PROCEEDING.