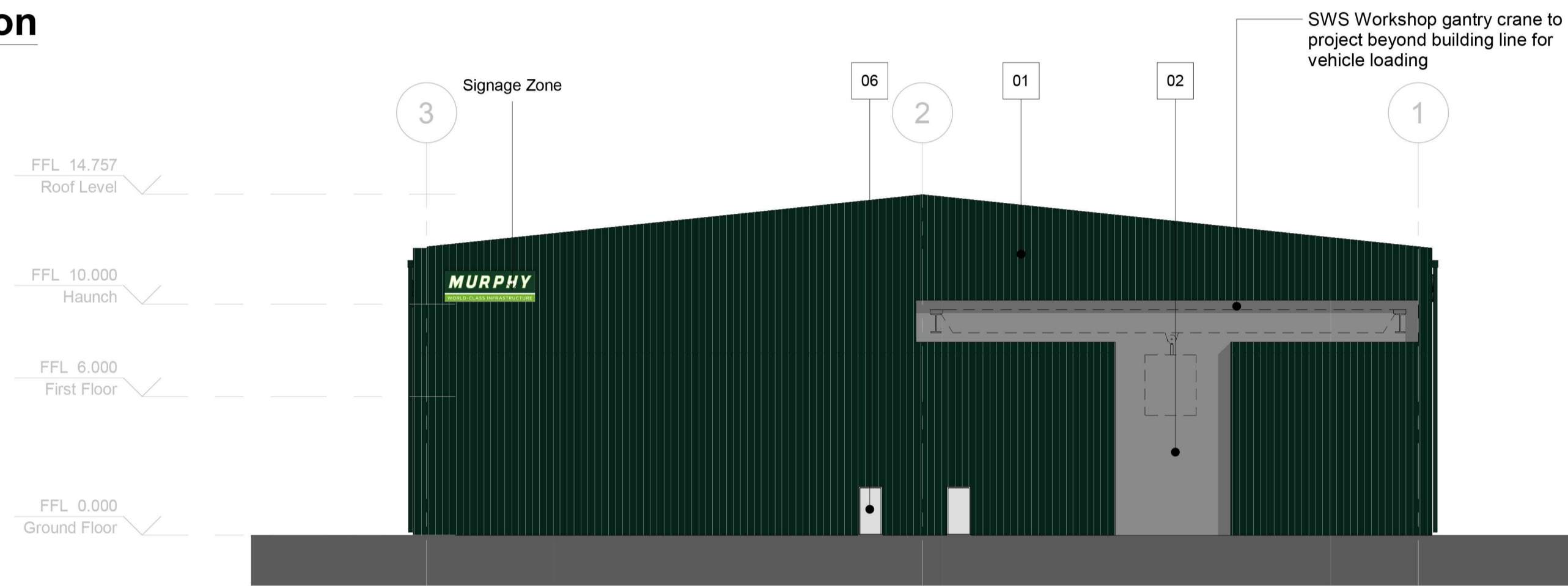
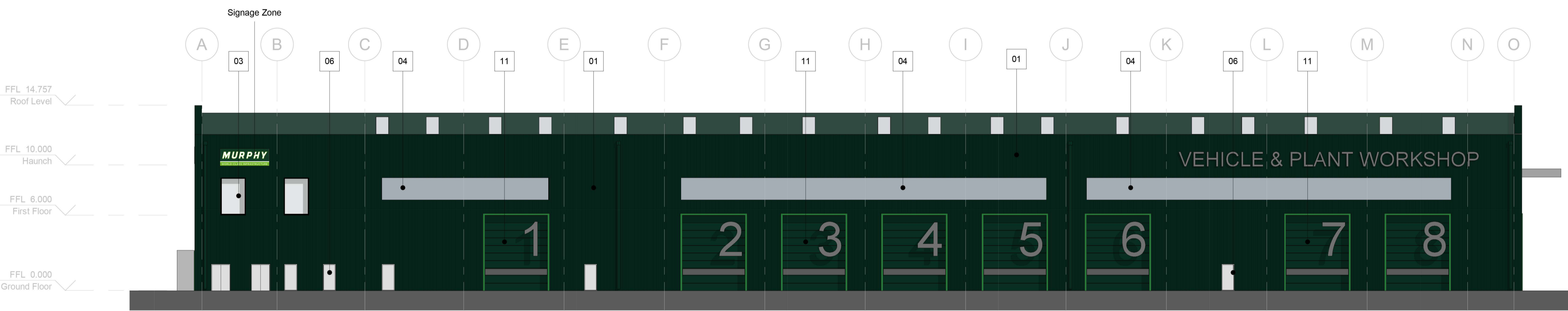


**3 North Elevation**  
1 : 200



**1 East Elevation**  
1 : 200

Materials Legend	
MTL TAG	MATERIAL
01	Vertical profile dark green cladding [Colour:RAL 6005]
02	Retractable screening at gantry crane exit void
03	Powder coated aluminium framed low E double glazing
04	Translucent polycarbonate wall light
05	Omitted
06	Personnel door
07	Vertical profile silver cladding [Colour: RAL 9006]
08	Entrance canopy - Precast concrete
09	Signage - PPC Aluminium
10	Feature flashing to level access floor surround [Colour: Green]
11	Level access door



**4 South Elevation**  
1 : 200



**2 West Elevation**  
1 : 200

0 2.5 m 5.0 m 10.0 m  
SCALE: 1:200

Zone: **03** Status: **PL**

The contractor must check dimensions on site. Only figured dimensions to be worked from.  
Any discrepancies must be reported to the architect before proceeding

**DRAWING CONVENTIONS:**  
For ease of reading, View Tags (Elevation, Section markers etc.) indicate last 4 digits of Document no. only

**NOTES:**

Rev.	Description	Date	Checked
A	Issued for planning	29/11/2023	GTH
-	Issued for stage 2 approval	16/11/2023	GTH

**REVISIONS**

**GTH / architects**  
The Print Rooms, 164/180 Union Street, London SE1 0GE  
design@gth-architects.com  
www.gth-architects.com

PROJECT TITLE: Newark Road NG22 9QG

117-GTH-03-ZZ-DR-A-2210

STATUS	REVISION	SCALE @ A1	SCALE @ A0
PL	A	1:200	1:400

29/11/2023

Drawing numbering as per BS 1192 / BS EN ISO 19650  
This drawing is copyrighted (©) by GTH architects

