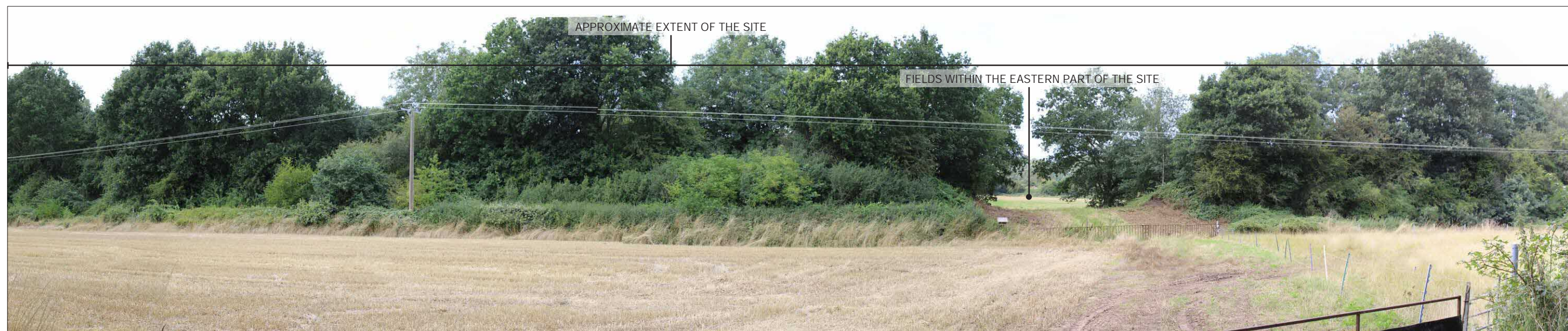










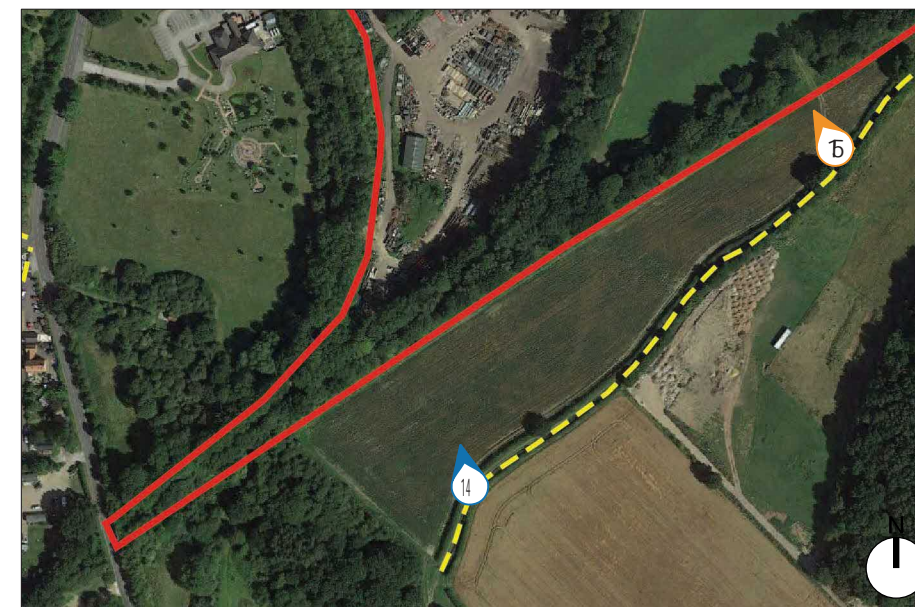
**PHOTOGRAPH –VIEWPOINT 14** VALUE: MEDIUM  
 VIEW FROM PROW WELLOW FP2 TO THE SOUTH OF THE SITE, LOOKING NORTH TOWARDS THE SITE. VIEWS OF THE SITE ARE PREDOMINANTLY TRUNCATED BY THE VEGETATION ALONGSIDE THE PROW AND THE SOUTH EASTERN SITE BOUNDARY VEGETATION. THE VIEW HAS AN ENCLOSED, RURAL CHARACTER.



**PHOTOGRAPH –VIEWPOINT 15** VALUE: MEDIUM  
 VIEW FROM PROW WELLOW FP2 TO THE SOUTH OF THE SITE, LOOKING NORTH TOWARDS THE SITE. VIEWS OF THE SITE ARE GENERALLY TRUNCATED BY THE SOUTH EASTERN SITE BOUNDARY VEGETATION OTHER THAN WHERE THERE IS AN OPEN VIEW OF THE EASTERN HALF OF THE SITE THROUGH THE EXISTING FIELD ACCESS. THE VIEW HAS A RURAL CHARACTER WITH MATURE VEGETATION.

**LEG EN D**

-  SITE BOUNDARY
-  PROW - FOOTPATH
-  PERMISSIVE FOOTPATH
-  VIEWPOINT LOCATION –OPEN VIEW (AN OPEN VIEW OF THE WHOLE OF THE SITE OR OPEN VIEW OF PART OF THE SITE).
-  VIEWPOINT LOCATION –PARTIAL VIEW (A VIEW OF THE SITE WHICH FORMS A SMALL PART OF THE WIDER PANORAMA, OR WHERE VIEWS ARE FILTERED BETWEEN INTERVENING BUILT FORM OR VEGETATION).
-  VIEWPOINT LOCATION –TRUNCATED VIEW (VIEWS OF THE SITE ARE OBSCURED BY THE INTERVENING BUILT FORM AND / OR VEGETATION, OR IS DIFFICULT TO PERCEIVE).



VIEWPOINT LOCATIONS









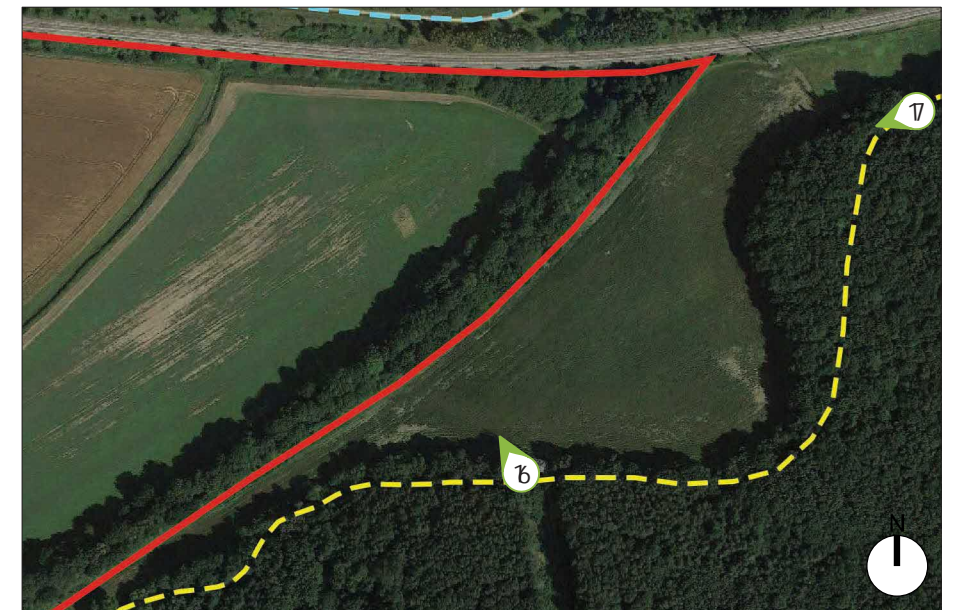
**PHOTOGRAPH –VIEWPOINT 16**      **VALUE: LOW**  
 VIEW FROM PROW WELLOW FP2 WITHIN WELLOW PARK ANCIENT WOODLAND/SSSI ADJACENT TO THE EXISTING ELECTRICITY PYLON, LOOKING NORTH EAST TOWARDS THE SITE. THERE ARE PARTIAL FILTERED VIEWS OF THE SOUTH EASTERN BOUNDARY VEGETATION, WHICH TRUNCATES VIEWS OF THE INTERNAL ARRANGEMENTS OF THE SITE. THE CHARACTER OF THE VIEW IS ENCLOSED WITHIN A WOODLAND SETTING.



**PHOTOGRAPH –VIEWPOINT 17**      **VALUE: HIGH**  
 VIEW FROM PROW WELLOW FP2 WITHIN WELLOW PARK ANCIENT WOODLAND/SSSI, LOOKING WEST TOWARDS THE SITE. THERE ARE PARTIAL VIEWS OF THE SOUTH EASTERN BOUNDARY VEGETATION, WHICH TRUNCATES VIEWS OF THE INTERNAL ARRANGEMENTS OF THE SITE. THE CHARACTER OF THE VIEW IS ENCLOSED WITHIN A WOODLAND SETTING.

**LEG EN D**

-  SITE BOUNDARY
-  PROW - FOOTPATH
-  PERMISSIVE FOOTPATH
-  VIEWPOINT LOCATION –OPEN VIEW (AN OPEN VIEW OF THE WHOLE OF THE SITE OR OPEN VIEW OF PART OF THE SITE).
-  VIEWPOINT LOCATION –PARTIAL VIEW (A VIEW OF THE SITE WHICH FORMS A SMALL PART OF THE WIDER PANORAMA, OR WHERE VIEWS ARE FILTERED BETWEEN INTERVENING BUILT FORM OR VEGETATION).
-  VIEWPOINT LOCATION –TRUNCATED VIEW (VIEWS OF THE SITE ARE OBSCURED BY THE INTERVENING BUILT FORM AND / OR VEGETATION, OR IS DIFFICULT TO PERCEIVE).



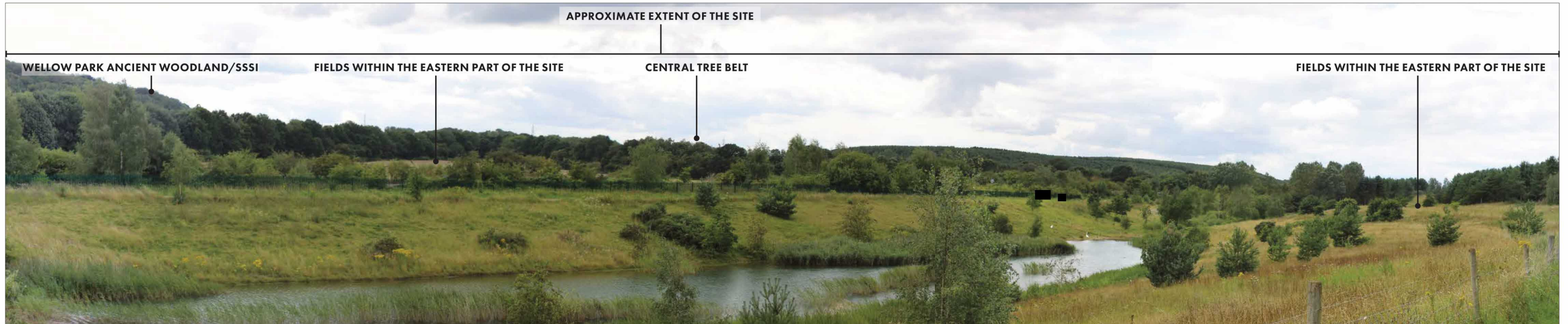
VIEWPOINT LOCATIONS



**PHOTOGRAPH – VIEWPOINT 18**

**VALUE: MEDIUM**

VIEW FROM THE PERMISSIVE ROUTE WITHIN OLLERTON PIT WOOD ADJACENT TO THE RAILWAY LINE ON THE NORTHERN BOUNDARY OF THE SITE, LOOKING SOUTH WEST TOWARDS THE OPEN FIELDS OF THE EASTERN HALF OF THE SITE. THERE ARE OPEN VIEWS OF PARTS OF THESE FIELDS ONLY THROUGH THE SECURITY FENCING. THE VIEW HAS AN ENCLOSED CHARACTER DUE TO THE WOODLAND OF WELLOW PARK ON THE RISING GROUND AND THE VEGETATION ALONGSIDE THE RAILWAY LINE.





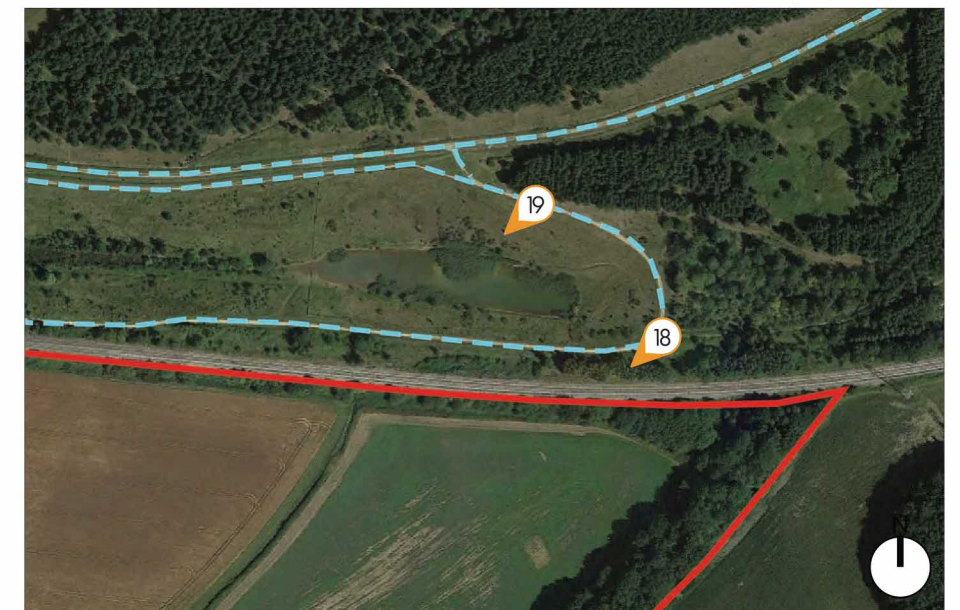
**PHOTOGRAPH – VIEWPOINT 19**

**VALUE: HIGH**

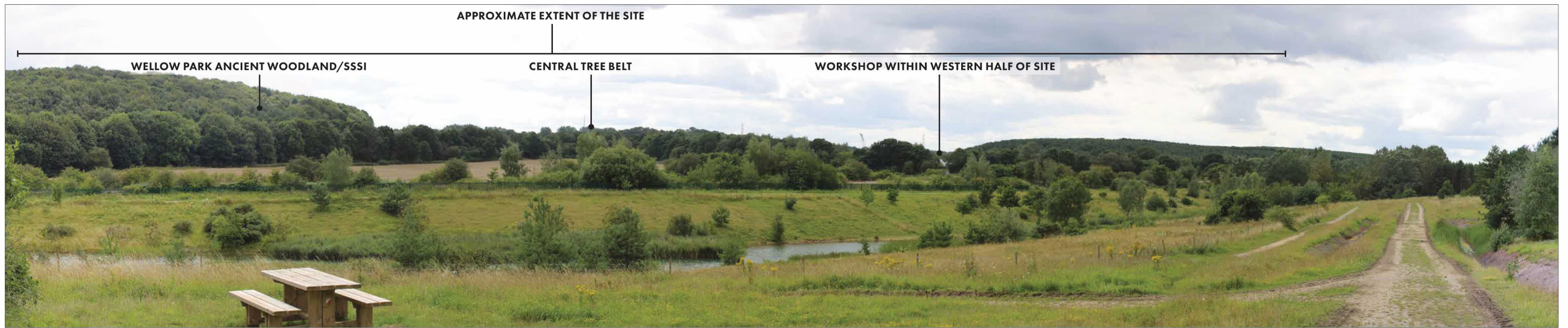
VIEW FROM THE PERMISSIVE ROUTE WITHIN OLLERTON PIT WOOD TO THE NORTH OF THE POND, LOOKING SOUTH WEST TOWARDS THE SITE. THERE ARE OPEN VIEWS OF THE FIELDS WITHIN THE EASTERN HALF OF THE SITE ONLY, SET AGAINST A BACKDROP OF WOODLAND. THE CHARACTER OF THE VIEW IS RURAL WITH A RECREATIONAL NATURE TO THE FOREGROUND WITHIN THE PUBLIC OPEN SPACE.

**LEGEND**

-  **SITE BOUNDARY**
-  **PROW - FOOTPATH**
-  **PERMISSIVE FOOTPATH**
-  **VIEWPOINT LOCATION – OPEN VIEW (AN OPEN VIEW OF THE WHOLE OF THE SITE OR OPEN VIEW OF PART OF THE SITE).**
-  **VIEWPOINT LOCATION – PARTIAL VIEW (A VIEW OF THE SITE WHICH FORMS A SMALL PART OF THE WIDER PANORAMA, OR WHERE VIEWS ARE FILTERED BETWEEN INTERVENING BUILT FORM OR VEGETATION).**
-  **VIEWPOINT LOCATION – TRUNCATED VIEW (VIEWS OF THE SITE ARE OBSCURED BY THE INTERVENING BUILT FORM AND / OR VEGETATION, OR IS DIFFICULT TO PERCEIVE).**



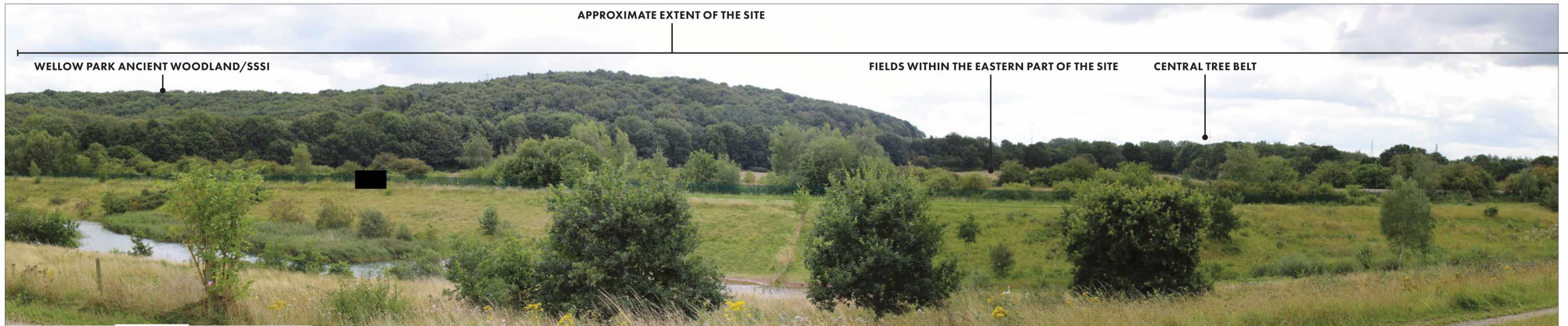
VIEWPOINT LOCATIONS



**PHOTOGRAPH - VIEWPOINT 20**

**VALUE: HIGH**

VIEW FROM THE PERMISSIVE ROUTE NETWORK WITHIN OLLERTON PIT WOOD, LOOKING SOUTH WEST CROSS THE EASTERN HALF OF THE SITE, OF WHICH THERE ARE OPEN VIEWS WHERE GAPS IN THE BOUNDARY VEGETATION ALONG THE RAILWAY LINE ALLOW. THERE ARE PARTIAL VIEWS OF A WORKSHOP WITHIN THE WESTERN HALF OF THE SITE THROUGH A GAP IN THE CENTRAL TREE BELT WITHIN THE SITE. THE EXTENSIVE WOODLAND COVER ON THE HORIZON CREATES A SENSE OF ENCLOSURE TO THE VIEW, WHICH IS ONLY PUNCTUATED BY SOME DISTANT ELECTRICITY PYLONS.




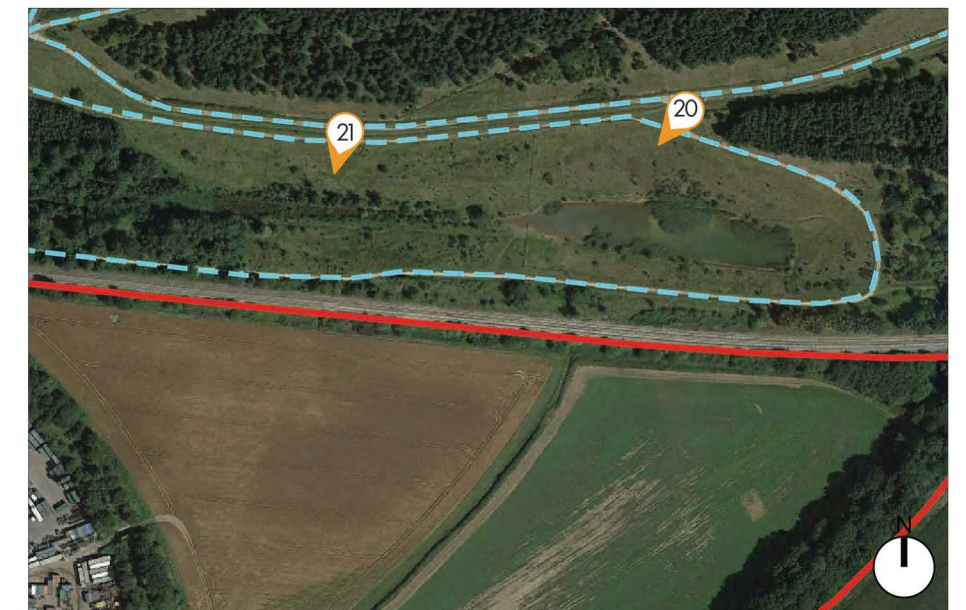
**PHOTOGRAPH - VIEWPOINT 21**

**VALUE: HIGH**

VIEW FROM THE PERMISSIVE ROUTE NETWORK WITHIN OLLERTON PIT WOOD, LOOKING SOUTH ACROSS THE EASTERN HALF OF THE SITE TOWARDS WELLOW PARK. THERE ARE OPEN VIEWS OF PARTS OF THE EASTERN HALF OF THE SITE AS WELL AS THE TREE BELTS ALONG THE FORMER RAILWAY LINE EMBANKMENTS. THE EXTENSIVE WOODLAND COVER ON THE HORIZON CREATES A SENSE OF ENCLOSURE TO THE VIEW, WHICH IS ONLY PUNCTUATED BY SOME DISTANT ELECTRICITY PYLONS.

**LEGEND**

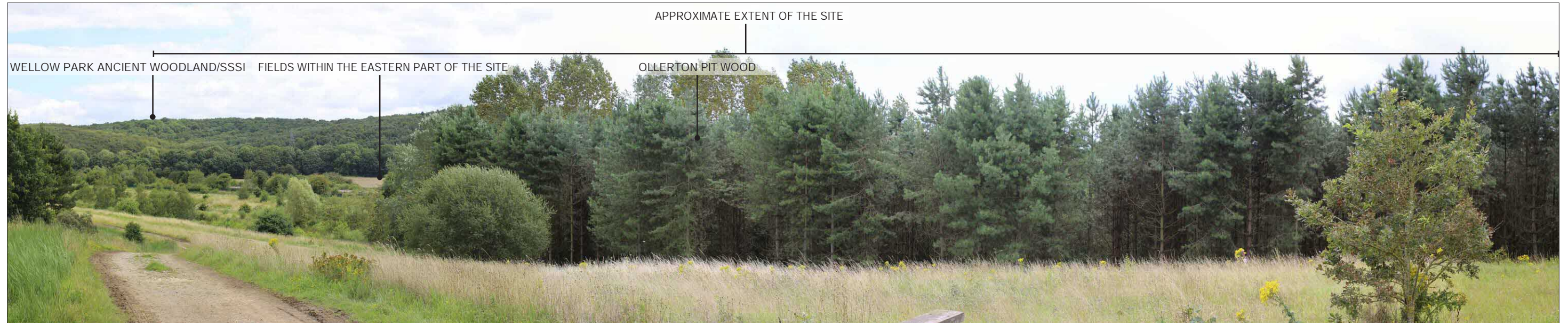
-  **SITE BOUNDARY**
-  **PROW - FOOTPATH**
-  **PERMISSIVE FOOTPATH**
-  **VIEWPOINT LOCATION - OPEN VIEW (AN OPEN VIEW OF THE WHOLE OF THE SITE OR OPEN VIEW OF PART OF THE SITE).**
-  **VIEWPOINT LOCATION - PARTIAL VIEW (A VIEW OF THE SITE WHICH FORMS A SMALL PART OF THE WIDER PANORAMA, OR WHERE VIEWS ARE FILTERED BETWEEN INTERVENING BUILT FORM OR VEGETATION).**
-  **VIEWPOINT LOCATION - TRUNCATED VIEW (VIEWS OF THE SITE ARE OBSCURED BY THE INTERVENING BUILT FORM AND / OR VEGETATION, OR IS DIFFICULT TO PERCEIVE).**



VIEWPOINT LOCATIONS









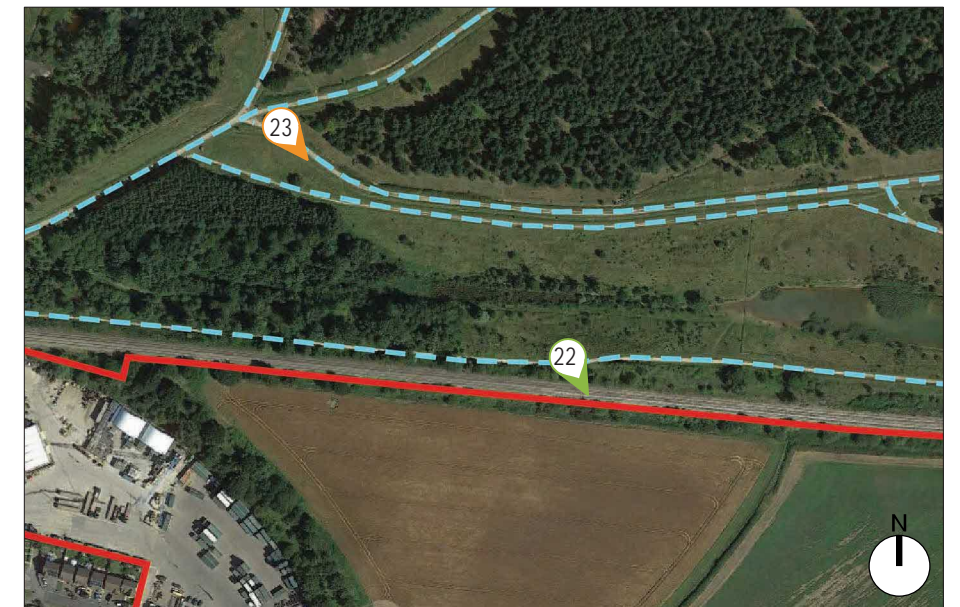
**PHOTOGRAPH –VIEWPOINT 22** **VALUE: HIGH**  
 VIEW FROM THE PERMISSIVE ROUTE ALONGSIDE THE RAILWAY TRACK WITHIN OLLERTON PIT WOOD, LOOKING SOUTH EAST TOWARDS THE SITE. THE RAILWAY LINE EMBANKMENT ALONG THE NORTHERN BOUNDARY OF THE SITE TRUNCATES VIEWS OF THE GROUND PLANE WITHIN THE SITE. THERE ARE PARTIAL VIEWS OF THE SOUTH EASTERN BOUNDARY TREE BELT ABOVE THE RAILWAY LINE, SET AGAINST A BACKDROP OF WELLOW PARK ANCIENT WOODLAND/SSSI. THE CHARACTER OF THE VIEW IS OF A NATURAL/SEMI-NATURAL OPEN SPACE, RAILWAY CORRIDOR AND WOODLAND.



**PHOTOGRAPH –VIEWPOINT 23** **VALUE: HIGH**  
 VIEW FROM THE PERMISSIVE ROUTE NETWORK WITHIN OLLERTON PIT WOOD TO THE NORTH OF THE SITE, LOOKING SOUTH EAST TOWARDS THE SITE. THE MAJORITY OF THE SITE IS OBSCURED FROM THIS VIEWPOINT BY THE CONIFEROUS WOODLAND IN THE FOREGROUND. THERE ARE OPEN VIEWS OF PART OF THE EASTERN FIELDS WITHIN THE SITE BEYOND THE INTERVENING WOODLAND, SET AGAINST A BACKDROP OF WELLOW PARK ANCIENT WOODLAND/SSSI.

**LEG EN D**

-  SITE BOUNDARY
-  PROW - FOOTPATH
-  PERMISSIVE FOOTPATH
-  VIEWPOINT LOCATION –OPEN VIEW (AN OPEN VIEW OF THE WHOLE OF THE SITE OR OPEN VIEW OF PART OF THE SITE).
-  VIEWPOINT LOCATION –PARTIAL VIEW (A VIEW OF THE SITE WHICH FORMS A SMALL PART OF THE WIDER PANORAMA, OR WHERE VIEWS ARE FILTERED BETWEEN INTERVENING BUILT FORM OR VEGETATION).
-  VIEWPOINT LOCATION –TRUNCATED VIEW (VIEWS OF THE SITE ARE OBSCURED BY THE INTERVENING BUILT FORM AND / OR VEGETATION, OR IS DIFFICULT TO PERCEIVE).



VIEWPOINT LOCATIONS



**PHOTOGRAPH –VIEWPOINT 24**      **VALUE: MEDIUM**  
 VIEW FROM THE WESTERNMOST SECTION OF THE PERMISSIVE ROUTE WITHIN OLLERTON PIT WOOD ADJACENT TO THE RAILWAY LINE DEFINING THE NORTHERN BOUNDARY OF THE SITE, LOOKING SOUTH EAST ALONG THE LINE OF THE RAILWAY. VIEWS OF THE SITE ARE TRUNCATED BY THE EMBANKMENT AND ASSOCIATED VEGETATION, CREATING A SENSE OF ENCLOSURE TO THE ROUTE ALONGSIDE THE VEGETATION WITHIN OLLERTON PIT WOOD.

**LEG EN D**

- SITE BOUNDARY
- PROW - FOOTPATH
- PERMISSIVE FOOTPATH
- 21 VIEWPOINT LOCATION –OPEN VIEW (AN OPEN VIEW OF THE WHOLE OF THE SITE OR OPEN VIEW OF PART OF THE SITE).
- 21 VIEWPOINT LOCATION –PARTIAL VIEW (A VIEW OF THE SITE WHICH FORMS A SMALL PART OF THE WIDER PANORAMA, OR WHERE VIEWS ARE FILTERED BETWEEN INTERVENING BUILT FORM OR VEGETATION).
- 21 VIEWPOINT LOCATION –TRUNCATED VIEW (VIEWS OF THE SITE ARE OBSCURED BY THE INTERVENING BUILT FORM AND / OR VEGETATION, OR IS DIFFICULT TO PERCEIVE).



VIEWPOINT LOCATIONS