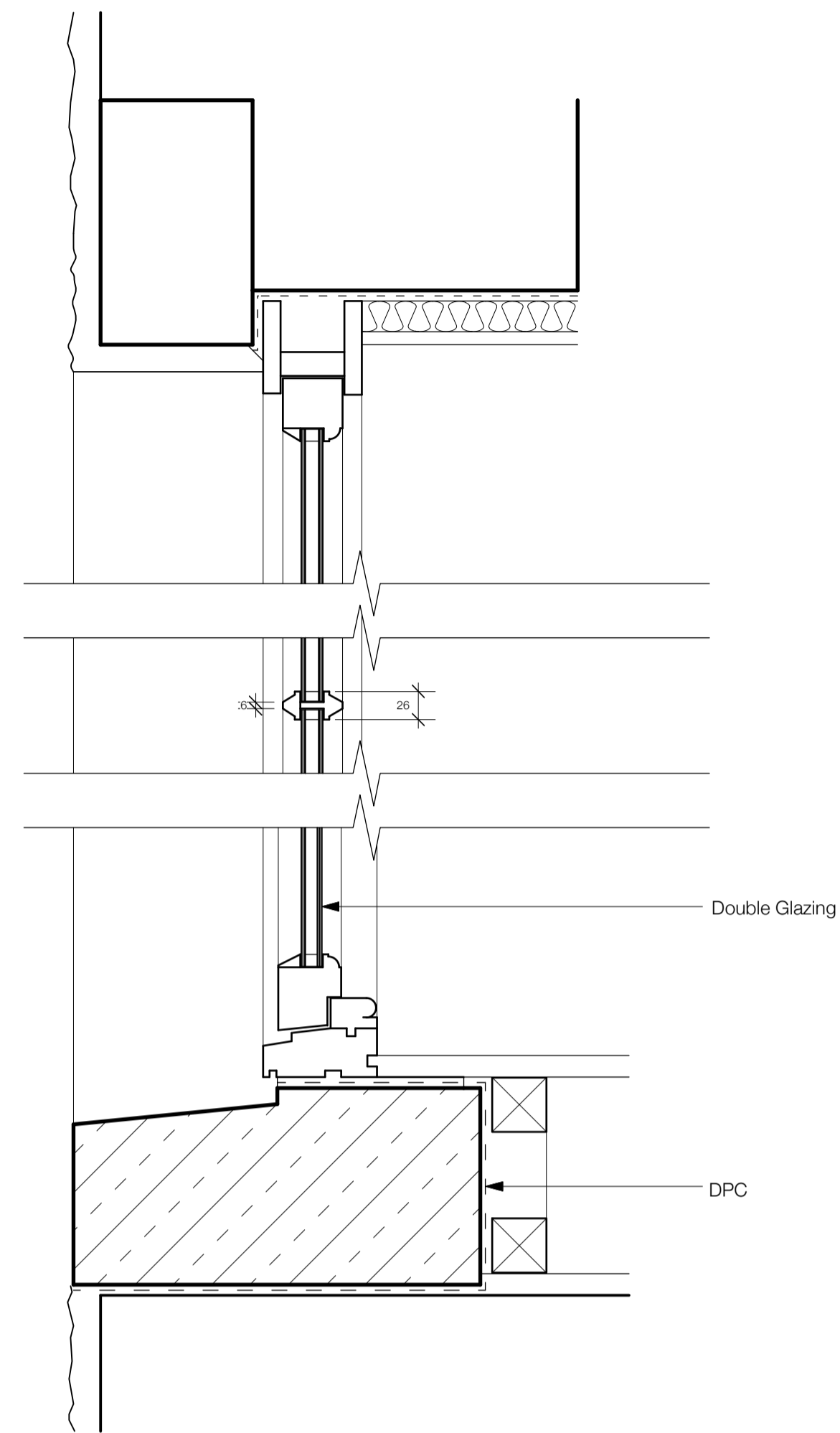
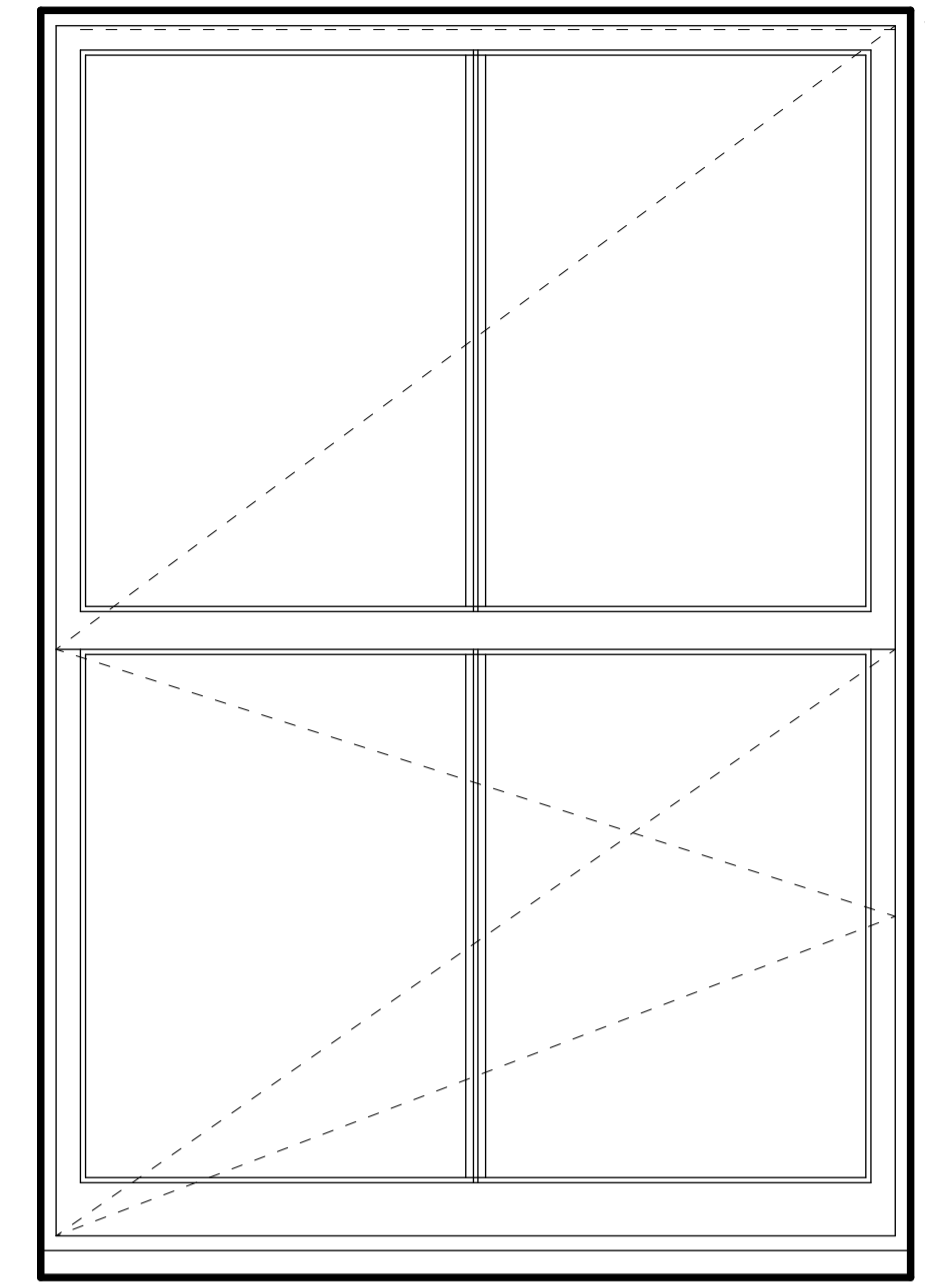


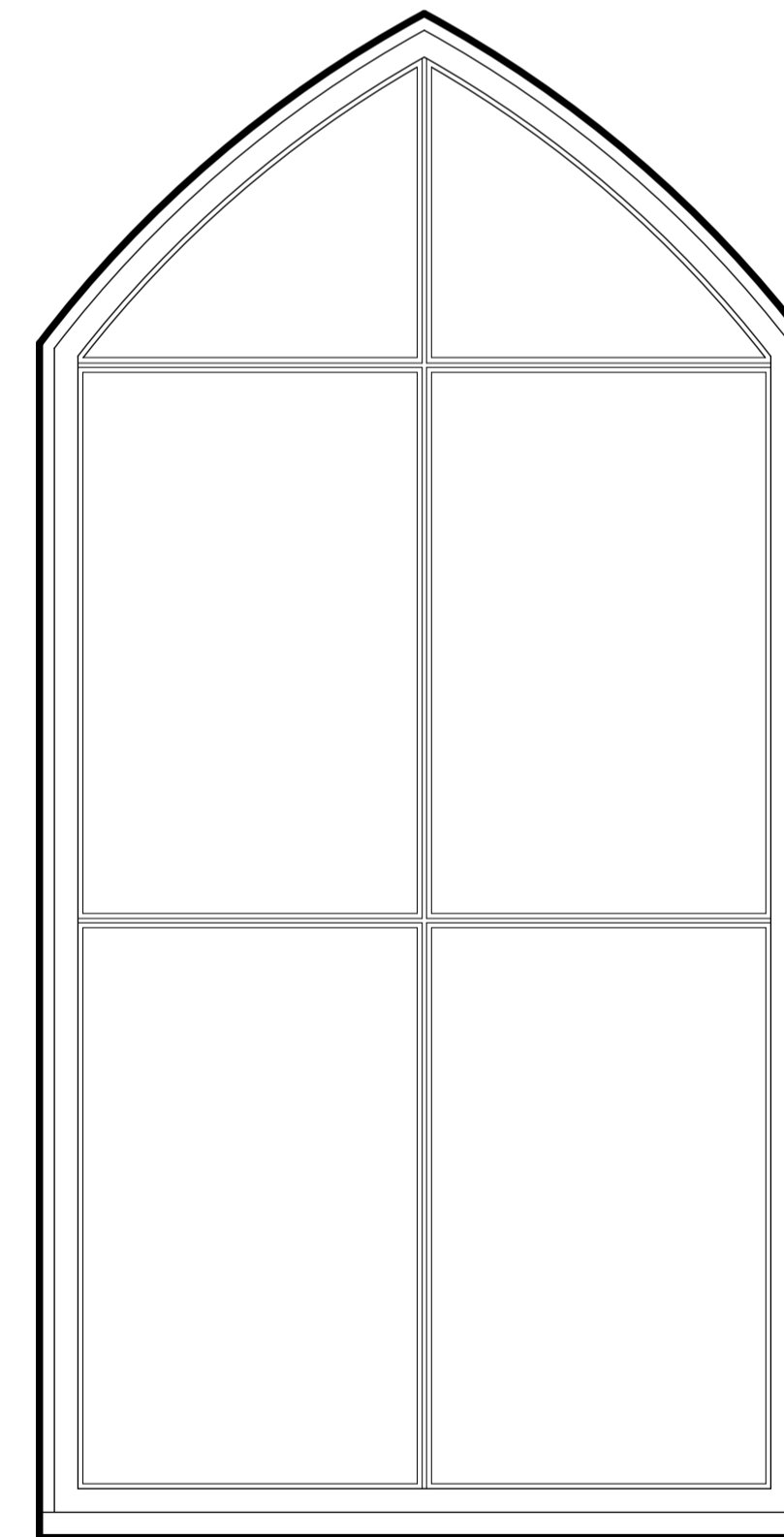
Replacement Sash and Case Window
Typical Section 1:5



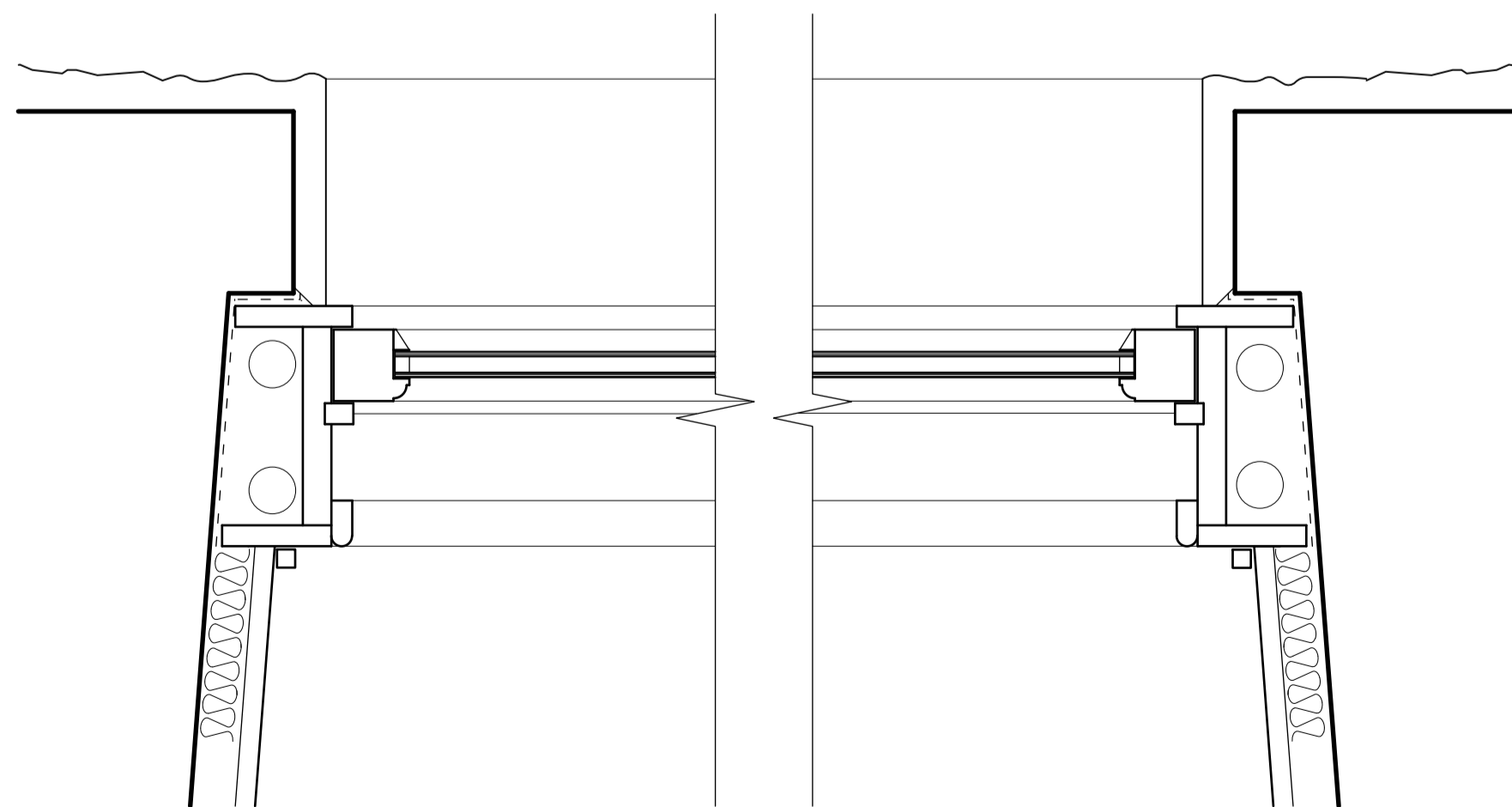
Double Glazed Fixed
Window Section 1:5



Typical Window Elevation
Double Hung Sash and Case
Window 1:10



Typical Window Elevation
Multi-Pane Fixed Window 1:10



Replacement Sash and Case Window
Typical Plan 1:5

| No | Revisions | Date | Initials |
|----|-----------|------|----------|
| | | | |
| | | | |
| | | | |

**MANTELL
RITCHIE**

Chartered Architects

27A High Street, BANFF,
AB45 1AN
Tel: 01261 812267
Email: admin@mantellritchie.co.uk
www.mantellritchie.com



Copyright of Mantell Ritchie, Chartered Architect.

project
Our Lady of Mount Carmel
Roman Catholic Church,
Sandyhill Road, BANFF,
Replacement Windows
for
Father Piotr

content
Typical Window Details

| scales | drawn by | size | date |
|-----------|----------|------|----------|
| 1:5, 1:10 | MR | A1 | 13.03.24 |

ref **23122** **03**