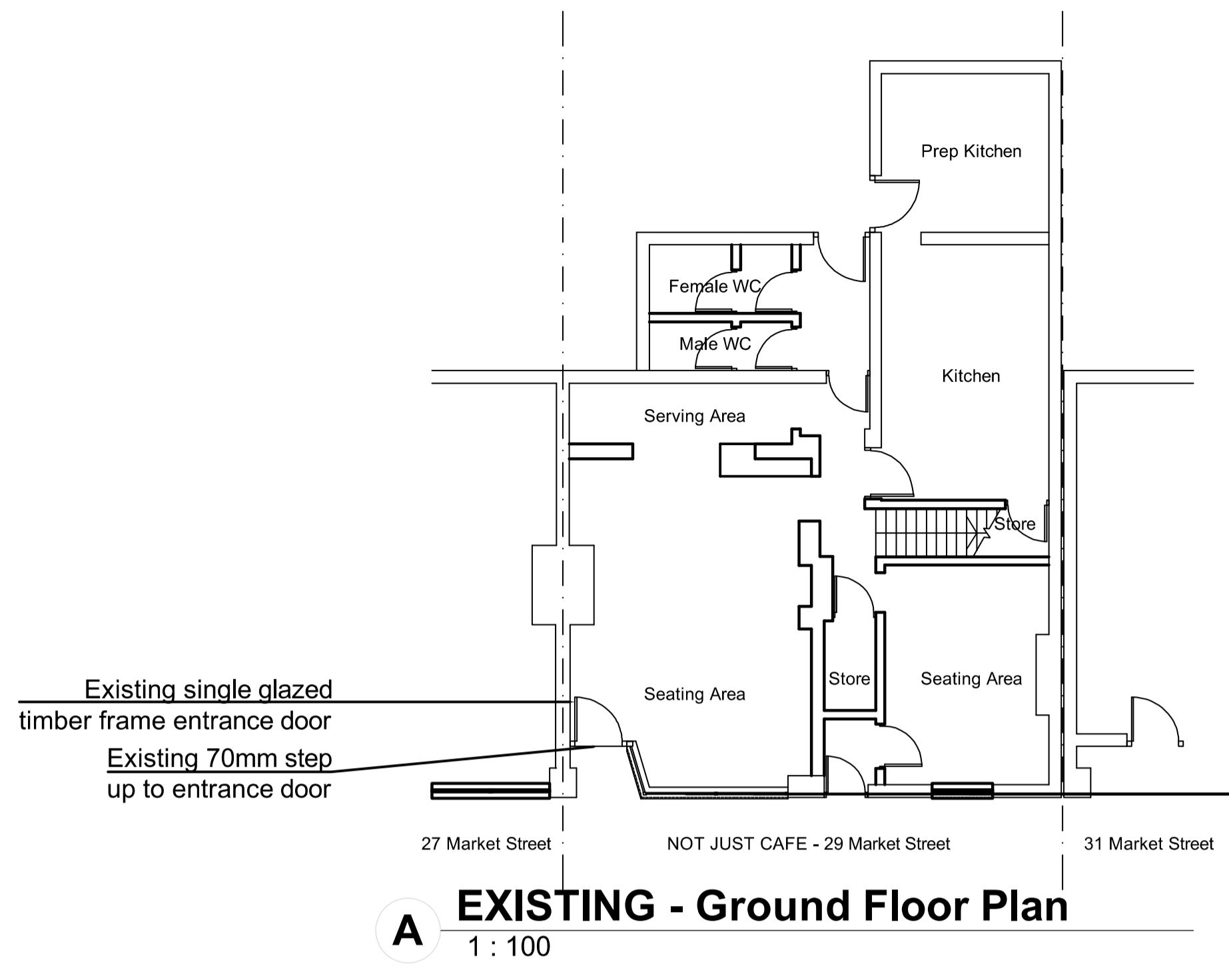


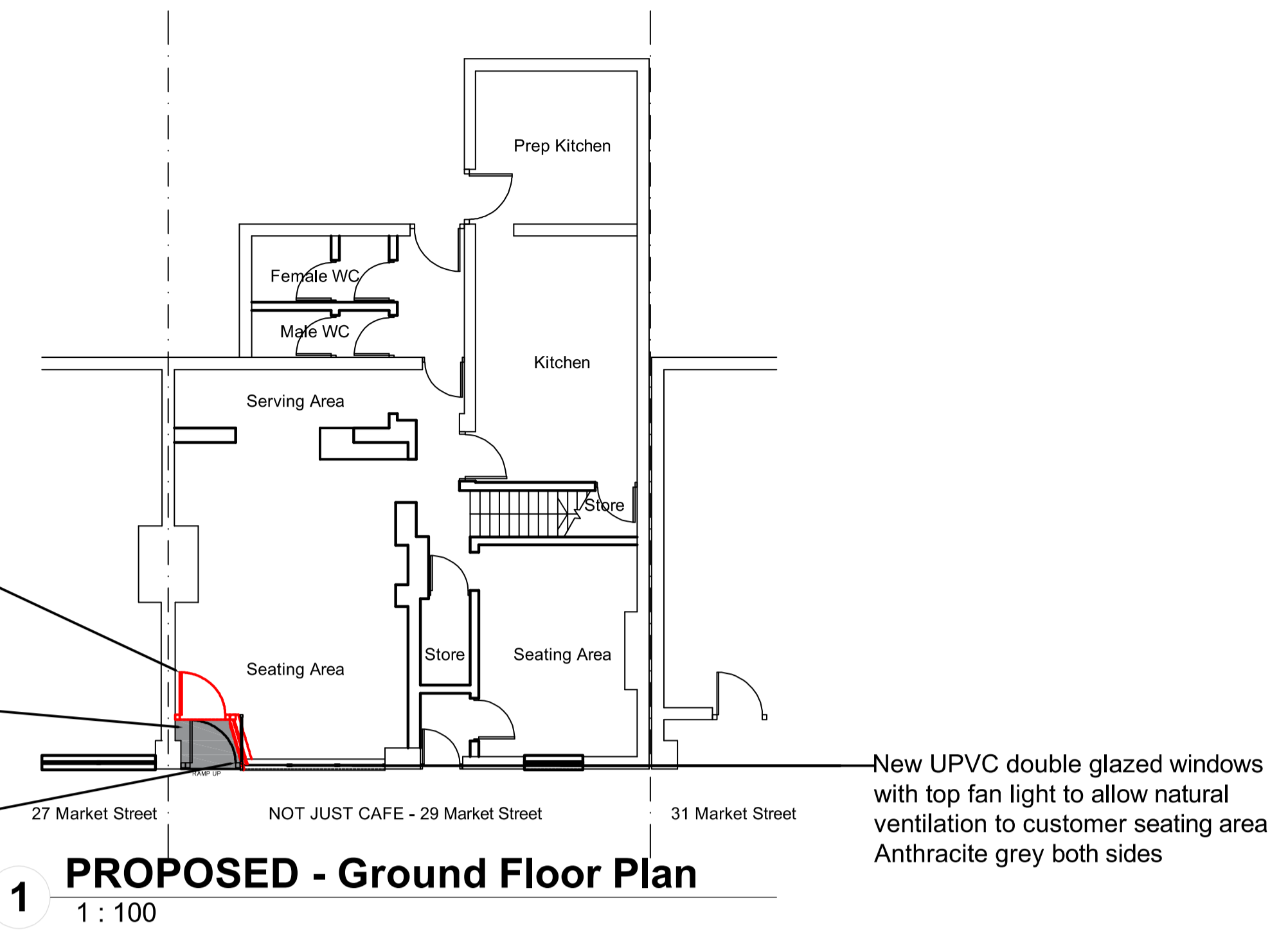
Rev	Date	Version Description	Dm	Chk
P01	12/02/24	Issued for Planning	PL	-
P02	15/03/24	Notes updated	PL	-



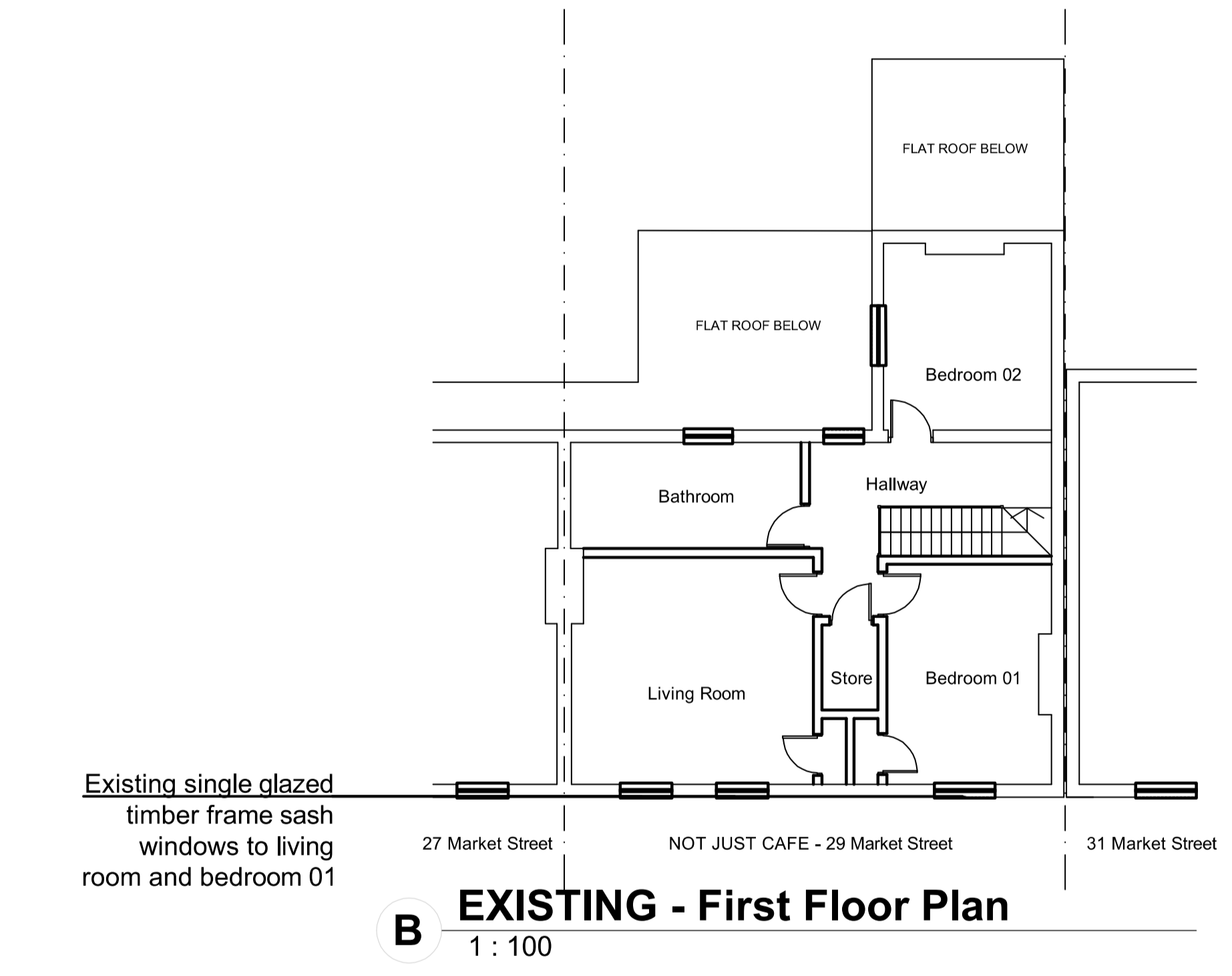
Existing external door and side glazed screen to demolished. New internal glazed screen to be installed as shown

New stepped threshold to same level as existing door. Fill in the void with concrete and level off

New UPVC double glazed entrance door repositioned in line with shop front glazing

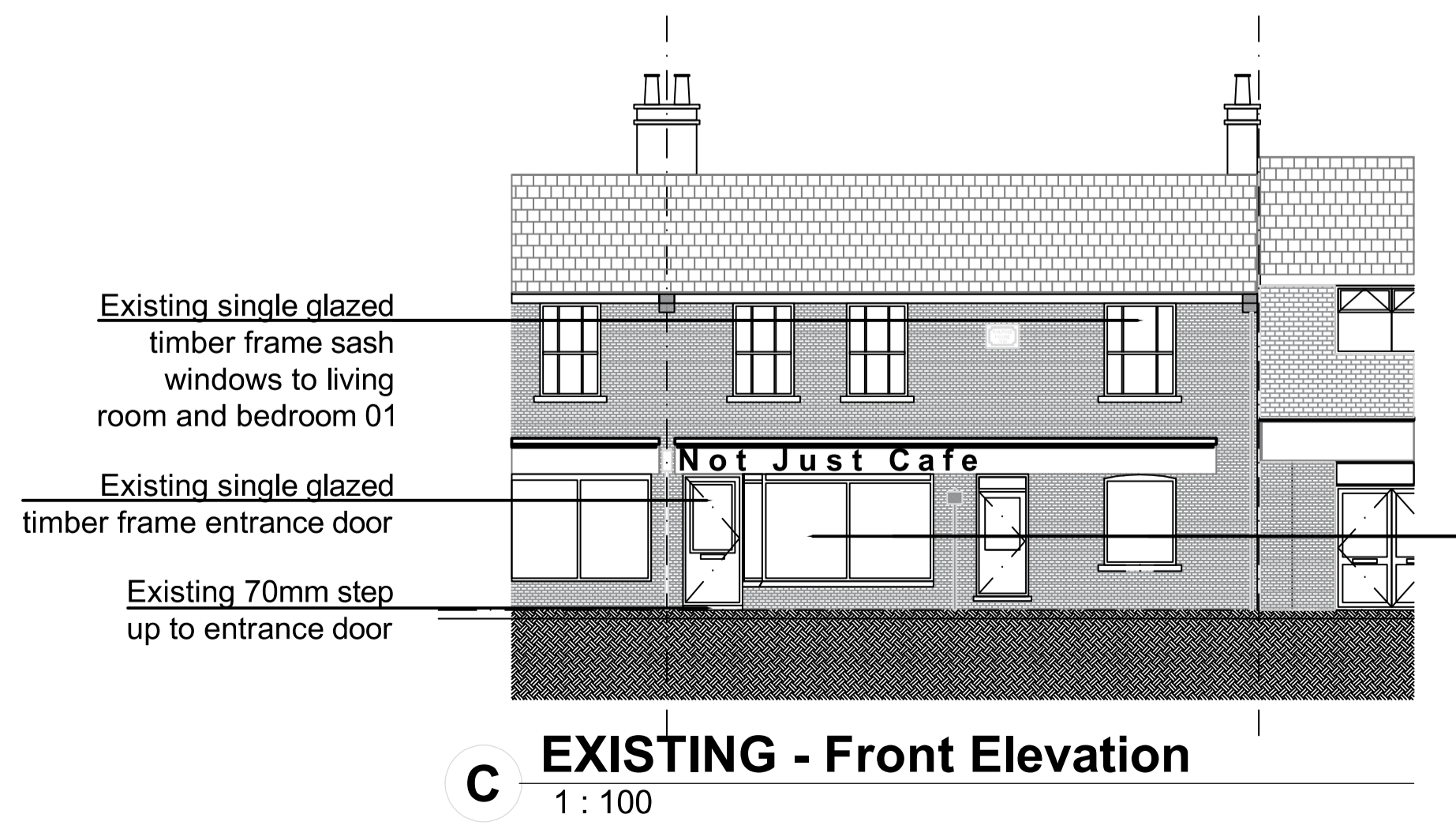
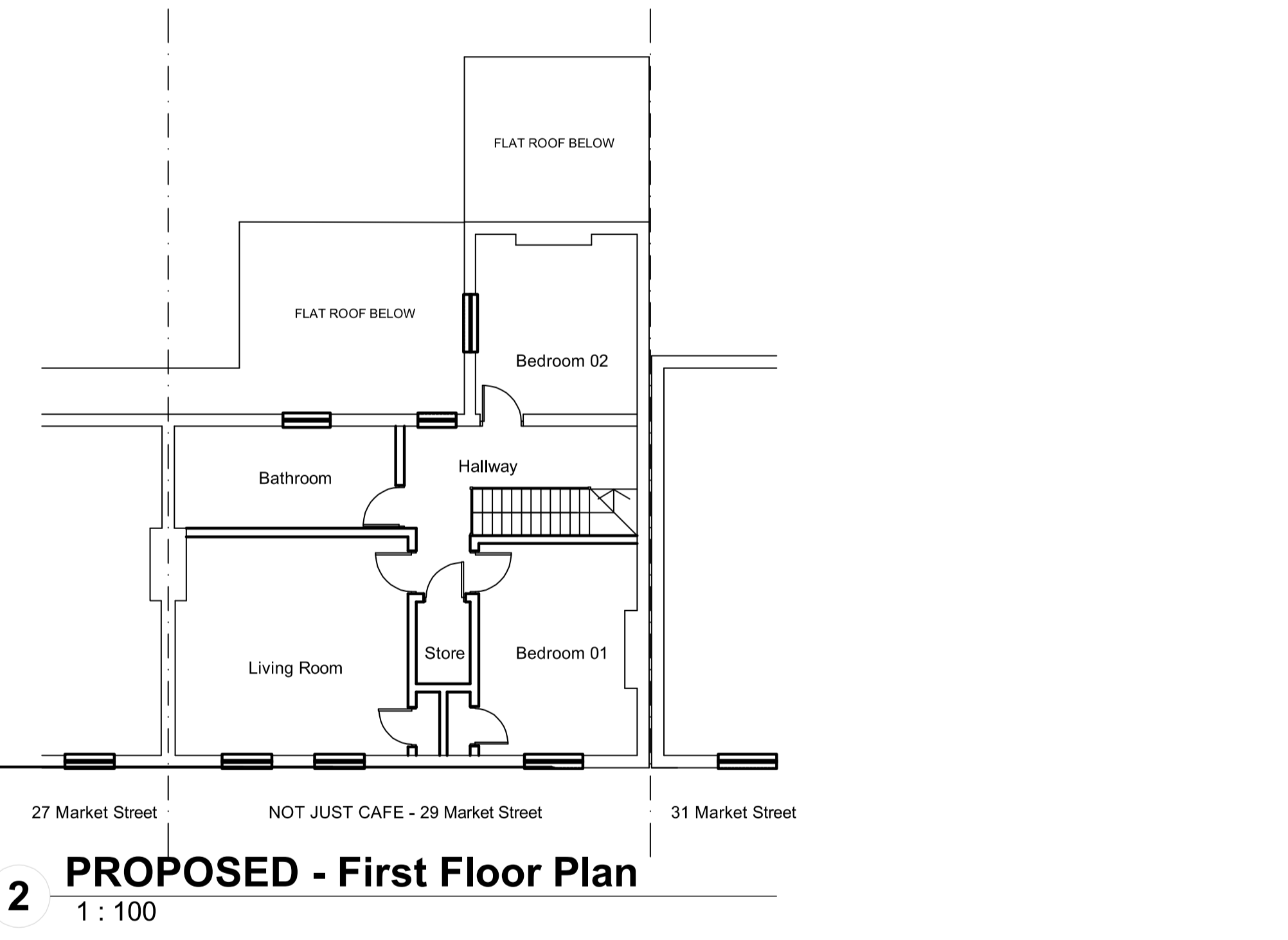


New UPVC double glazed windows with top fan light to allow natural ventilation to customer seating area Anthracite grey both sides



Existing single glazed timber frame sash windows to living room and bedroom 01

3 No. New UPVC double glazed sash windows sliding sash windows, to living room and bedroom 01. Rosewood on white



Existing single glazed timber frame sash windows to living room and bedroom 01

Existing single glazed timber frame entrance door

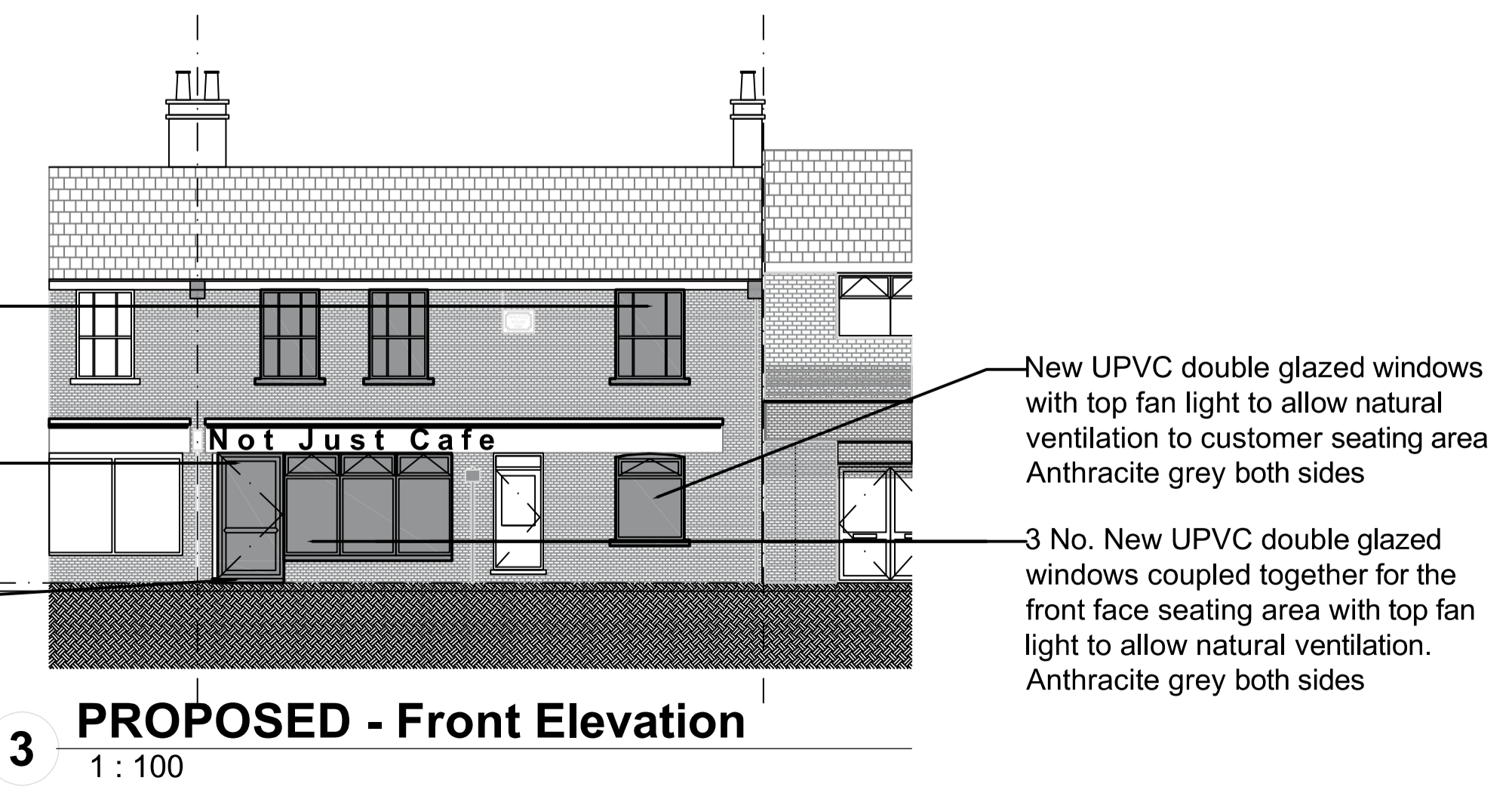
Existing 70mm step up to entrance door

Existing single glazed timber frame fixed windows to seating area

3 No. New UPVC double glazed sash windows sliding sash windows, to living room and bedroom 01. Rosewood on white

New UPVC double glazed entrance door repositioned in line with shop front glazing

New stepped threshold to same level as existing door. Fill in the void in between new door and current door with concrete and level off



New UPVC double glazed windows with top fan light to allow natural ventilation to customer seating area Anthracite grey both sides

3 No. New UPVC double glazed windows coupled together for the front face seating area with top fan light to allow natural ventilation. Anthracite grey both sides

SAFETY, HEALTH AND ENVIRONMENTAL INFORMATION	
In addition to the hazards/risks normally associated with the types of work detailed on this drawing, refer to Designers Risk Assessment, note the following :	
It is assumed that all works will be carried out by a competent contractor working, where appropriate, to an approved method statement	
Use Dimension	
Contractors Must Verify All Dimensions On Site Before Starting Work	
This Drawing is Copyright	

Client
-

Project Name
NOT JUST CAFE
29 Market Street, Whittlesey, PE7 1BA

Drawing Title
Existing and Proposed Plans

Drawing Status Planning Submission		North	
Drawing Details FILES SDATES		Job No. 2024-NJC1	
Drawn By PL	Drawn Date Feb 2024	Checked By -	Scale @ A1 1:100
Drawing Number 2024/NJC1/A1/100		Revision P02	