

Key:

- 1 Facing brickwork type 1
- 2 Facing brickwork type 2
- 3 Grey aluminium window. Clear glazed unless otherwise stated.
- 4 Grey fascia boards
- 5 Grey aluminium rainwater goods
- 6 Grey zinc dormer surrounds
- 7 Ventilation louvres, colour matched to windows
- 8 Grey metal vertical bar balustrade
- 9 Inlet and extract vents serving ventilation and heating units
- 10 Grey aluminium entrance door with grey metal clad canopy over and adjacent wall-mounted light
- 11 Wall-mounted luminaires
- 12 Fibre cement slates and PV panels
- 13 Pole-top luminaires
- 14 Timber gate to private garden
- 15 Hit and miss brickwork detail
- 16 Retained and lowered boundary wall
- 17 Perforated metal screen colour matched to balcony metalwork
- 18 Fixed windows fitted with obscure glass

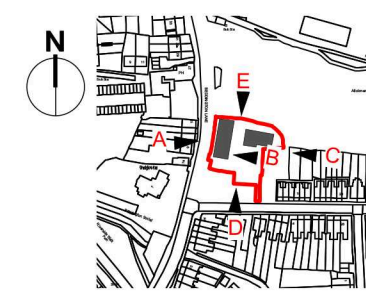
P11 01.03.24 Split Block Update AR AR

Habitat Enhancement Measures (refer to *Biodiversity And Enhancement Management Plan* by Ecology & Land Management (Dec 2022))

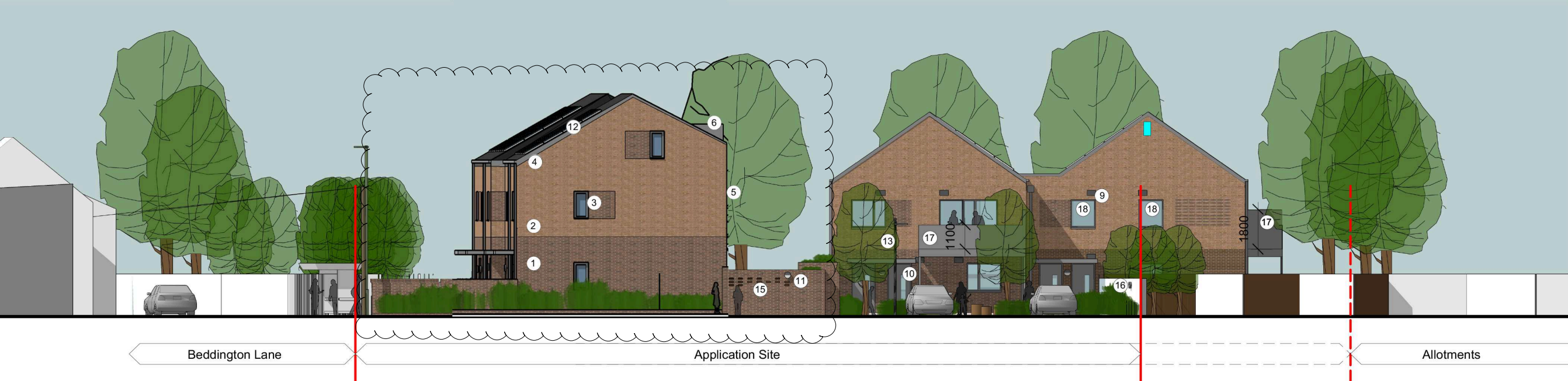
- Habitat 3S Box (min 3m above ground)
- Ibstock swift brick
- Habitat 001 Box (min 3m above ground)
- Hedgehog fence/gate gap

Please note bird and bat boxes should be covered up during the construction period until Practical Completion to mitigate the risk of early occupation.

Key Plan



Issue	Date	Notes	Drawn	Chkd
P02	02.02.22	Planning Submission	WG	WG
P03	03.03.22	Planning Submission	WG	WG
P04	16.12.22	Non-material Amendment Submission draft	WG	WG
P05	10.01.23	Non-material Amendment Submission	WG	WG
P06	19.01.23	Habitat enhancement measures indicated.	WG	WG
P07	02.02.23	Habitat enhancement measures updated.	WG	WG
P08	01.03.24	Split Block Update	AR	AR



Elevation D - South



Elevation E - North

Project  
London Borough of Sutton  
Social Housing Phase 2c

Drawing  
30-32 Beddington Lane  
Proposed Elevations  
Sheet 2 of 2

Scale  
1:200 @ A3

Job n°. Originator\_Volume\_Level\_Type\_Role\_Number Rev  
3025-APLB-XX-XX-DR-A-3014 P07

Sustainability Status  
S4 - Planning



© ArchitecturePLB – do not scale (except for Planning purposes)  
For CDM information refer to the ArchitecturePLB Hazard Elimination and Residual Risk Register. Notes on this drawing refer only to items where a Residual Risk can be clearly linked to a specific item. As recommended within HSE's 'Industry Guidance for Designers' document, notes do not include generic risk information which must be considered by the relevant contractor.

50 Southwark Street London SE1 1UN Telephone 020 7940 1888 www.architectureplb.com

St Thomas Street Winchester SO23 9HD Telephone 01962 842 200

