

INSTALLATION ADVICE

LAPPING and JOINTING

To ease the installation process we have created a step by step guide to all our system components to ensure effective jointing, continuity and protection.

A GUIDE TO INSTALLATION

- Clean all surfaces and make sure they are clean, dry, free of grease, mortar and any other debris.
- The jointing of all top-hats, DPC, cavity trays and membranes should be done in warm ambient temperatures. Do not attempt to joint below 5°C. Warming may be required if jointing below 10°C.
- Apply as much pressure as possible to the area being jointed with membrane double sided tape. A standard wall paper roller makes a great tool for this job.
- Ensure membrane is protected with a screed or protection board if the installation is to be topped with steel reinforcement.
- Avoid all traffic on unprotected membrane. Only install the membrane just before the laying of any screed – reducing the amount on unnecessary traffic on the unprotected membrane.
- Ensure sufficient screed is laid to protect the membrane. Screed should be laid at 55mm thick across all areas of the membrane.

JOINTING of MEMBRANE



1
Unroll the first membrane, ensure the surface is dry and free from dust or grease. Inspect the membrane to ensure that there are no indentations or protrusions. If there are remove and apply sand blinding.

2
Apply Radbar Double Sided Tape to the membrane, 50mm from the edge. It is very important that the membrane is dry and free from dust and dirt.

3
The second membrane must be unrolled overlapping the first membrane by 150mm. Remove the protective paper from the Radbar Double Sided Tape; apply pressure to the membrane while joining the two membranes together.

4
Seal the two membranes by installing Radbar Single Sided Tape to the edge. (ensure that the membrane is completely dry, free from dust and dirt.

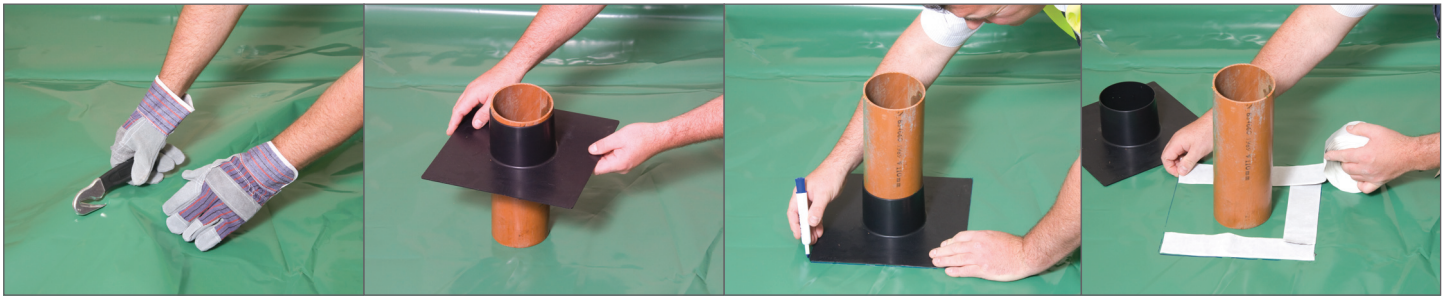


WASTE PIPE OPENINGS IN INSTALLATION

All apertures and opening for service pipes must be airtight and damp proof. Top Hats should be used for all service and waste pipe apertures. Ensure you have the following tools and equipment, available from Capital Valley Plastics Ltd, before the installation is started -

- Rigid preformed pipe sleeve (top hat) unit
 - available for either 110mm, 135mm or 160mm external diameter pipes.
- Flexible preformed pipe sleeve (Top Hat) unit – supplied to suit pipe external diameter as required.
- Double sided jointing tape.
- Girth lap tape.
- Foil lap tape – for gas applications.

HOW TO MAKE A GAS-TIGHT SEAL WHEN A PIPE PASSES THROUGH THE MEMBRANE

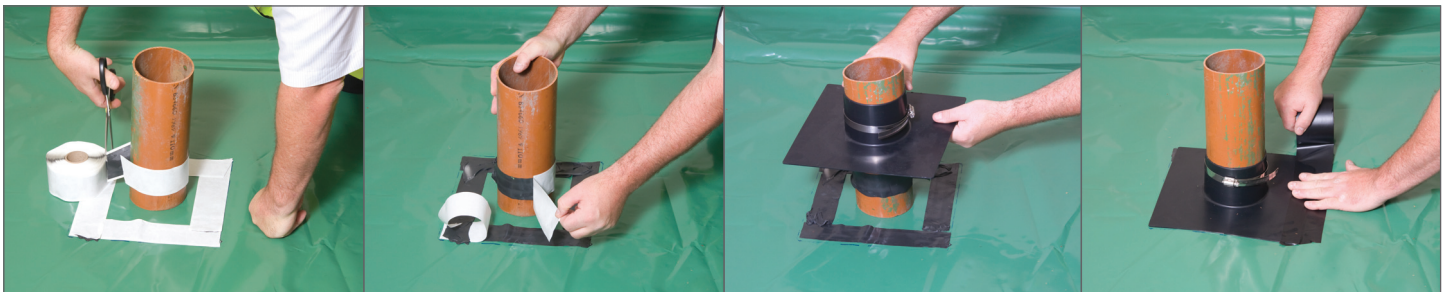


1
Cut a hole in the membrane to expose the pipe, ensure the hole fits the pipe as close as possible.

2
When the membrane and pipe is in position, place the Radbar Top Hat over the pipe. (110mm Diameter Top Hat is the most common, alternative sizes are available).

3
When the top hat is in place, mark the membrane around the top of the pipe and around the horizontal skirt of the top hat unit.

4
Remove the Top Hat unit and apply 4 lengths of double sided Radbar Tape to the area marked on the membrane. Ensuring the tape overlaps on the corners.



5
Below the point marked on the pipe. Apply one length of the tape around the pipe.

6
Remove the protective paper from the double sided Radbar Tape.

7
Replace the Top Hat unit over the pipe. Ensure that the base of the Top Hat is free from any dust, dirt or grease. Apply pressure to the Top Hat and seal the horizontal skirt to the membrane.

8
When the Top Hat unit is in place, using the Radbar Single Sided Tape, seal the edge of the horizontal skirt to the membrane. Then secure the Top Hat to the pipe using the jubilee Clip.

SYSTEM COMPONENTS/INSTALLATION ADVICE

PROTECTING MEMBRANES

Protection Boards should be used if the installation of membrane is to be topped by reinforcement of steels.

Capital Valley Plastics Ltd Protection Boards are –

- Easy to handle allowing ease of application
- Easy to install allowing close application

CAPITAL VALLEY PROTECTION BOARDS

The most robust and durable board available providing the best protection. Ideal for protection against vehicular, mechanical and pedestrian traffic and puncture. A highly resistant LDPE board giving great protection for membranes.

INSTALLATION

Boards should be loose laid. They can simply be butt jointed where a good straight joint can be achieved. If necessary the joints can be sealed with Jointing Tape. The tape should be applied evenly down the length of the joint. Ensure all surfaces are dry, clean, grease and debris free before application of tapes.

