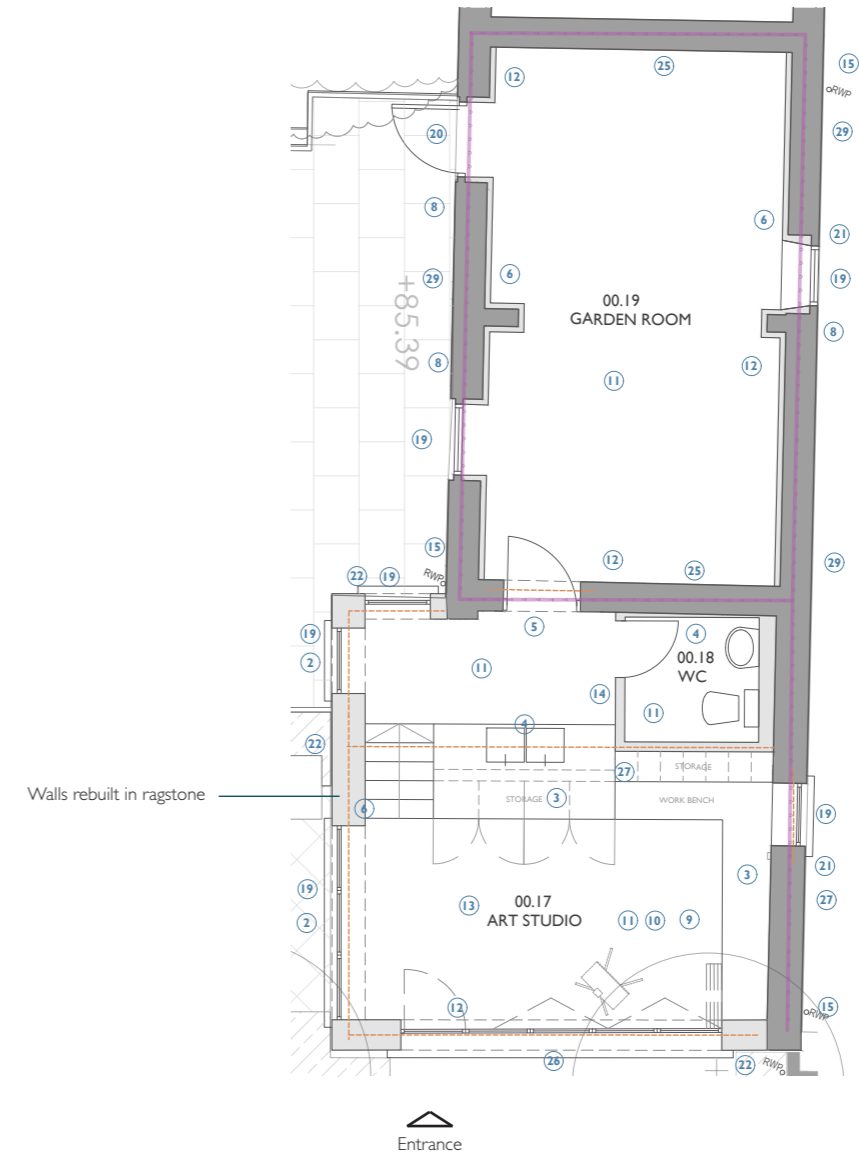


1.0 INTRODUCTION

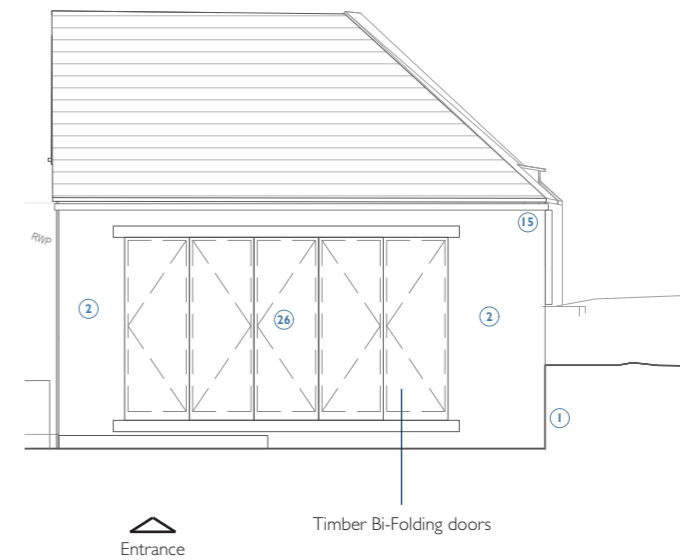
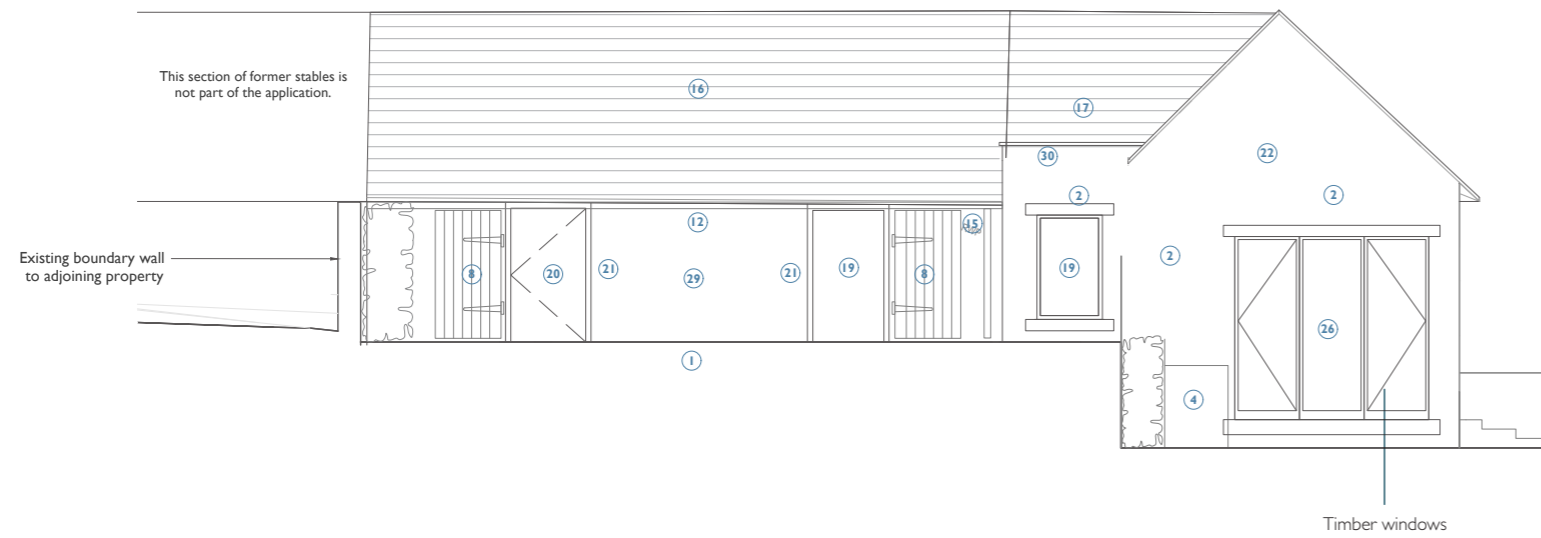
This non-material amendment relates to a portion of the works to the stone stables outbuilding which were granted as part of the planning and listed building consent (23/00037/HOUSE - granted 12.05.23) and (23/00038/LBCALT - granted 17.03.23)

The south and west elevation walls of the Art Studio 00.17 are to be rebuilt in ragstone with new timber windows and doors introduced. The entrance to the Art Studio is now to be via the west elevation rather than the south elevation, leading us to revisit the design of these openings. Namely the introduction of an outward opening swing door to the west elevation and sliding glazing to the south.

The intention is to maintain the strong interior/exterior connection while not inhibiting internal space, as well as referencing the new proposed Gym building (23/01529/HOUSE - granted 02.08.23) which is to be built in ragstone with sliding doors. Note the overall opening sizes remain consistent. Refer to the following page for an alongside comparison illustrating the change.



Previously consented proposals (for reference)



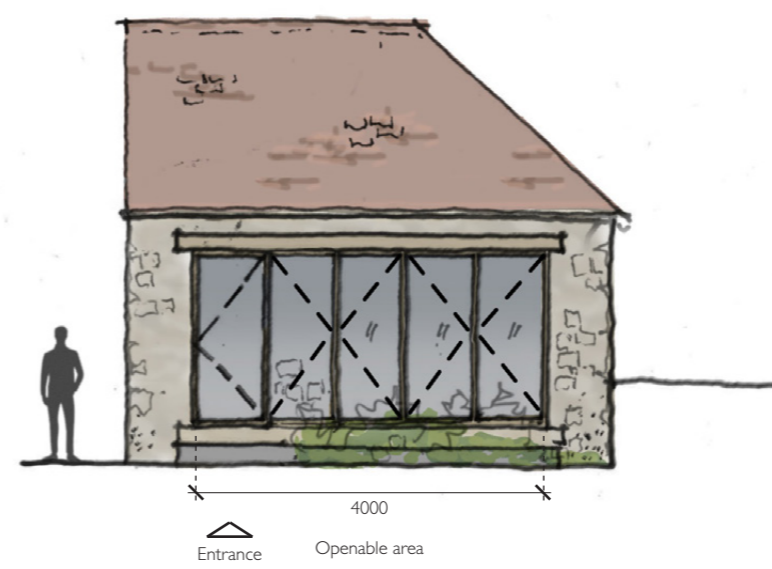
2.0 PROPOSED CHANGE TO SOUTH AND WEST ELEVATIONS

Previously Consented

West Elevation



South Elevation



Summary

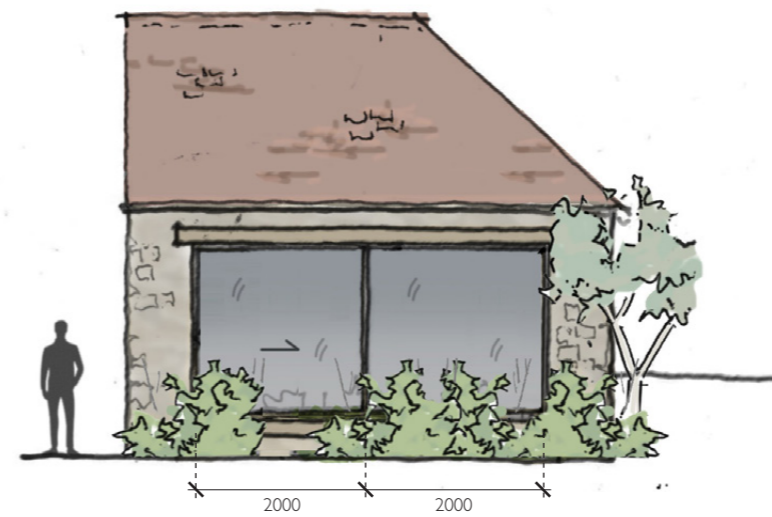
- Entrance to Art Studio in South elevation up paved steps.
- Bi-fold timber doors to South elevation.
- Large triple timber window in West elevation.

New Proposed

West Elevation



South Elevation



Summary

- Entrance to Art Studio in West elevation up paved steps.
- Sliding glazed timber windows to South elevation to same overall dimensions as previously consented (to act as opening only, not circulation route).
- Glazed timber entrance door with glazed timber fixed side panel to same overall dimensions as previously consented.