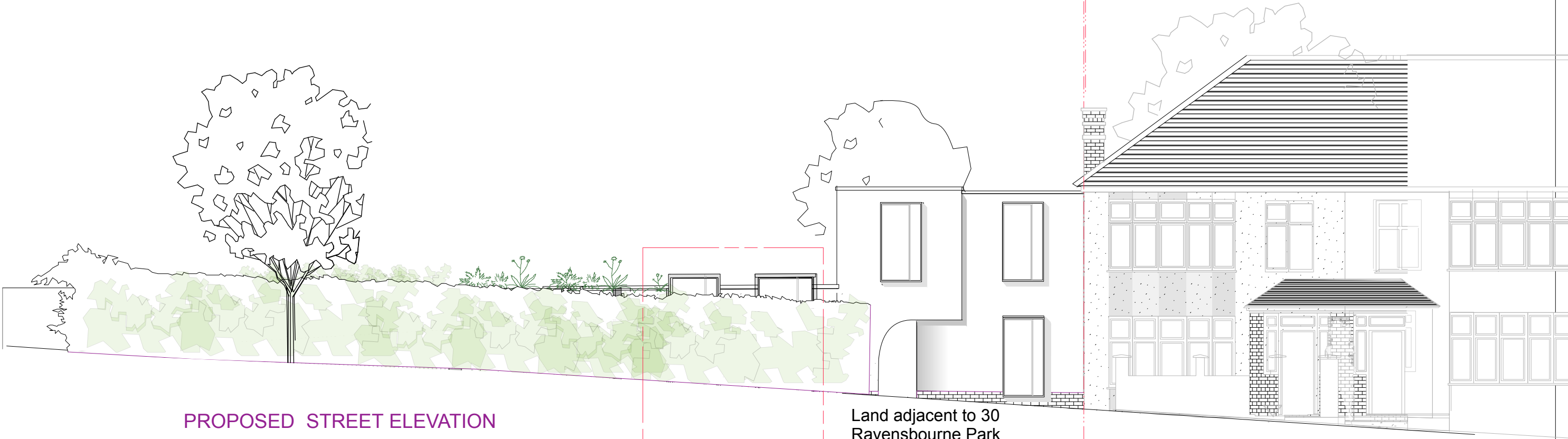


PROPOSED STREET ELEVATION
proposed non material amendment

30A Ravensbourne Park

street elevation
as built drawing



PROPOSED STREET ELEVATION
Originally approved/granted drawings

Land adjacent to 30
Ravensbourne Park

street elevation
originally approved drawing



Golzari - **NG Architects**

United House
39-41 North Road
London N7 9DP
+44(0)20 76093316
info@ngarchitects.co.uk

Project No.
2001
Project Title:
(former) land adjacent to 30
Ravensbourne Park
(new address)
30A Ravensbourne Park

Drawing No.
2101-NG06
Drawing Title:
PROPOSED FRONT ELEVATION
Scale:
1:100 @ A3

Rev Date Drawn Info

Rev	Date	Drawn	Info
A	14.3.24		

Notes

© This drawing remains the property of Golzari - NG Architects.
It should not be reproduced in hand or electronic copies without
a prior permission from Golzari - NG Architects
Drawings are for planning purpose only.
These are not construction drawings

1

2

3

4

5

6

7