

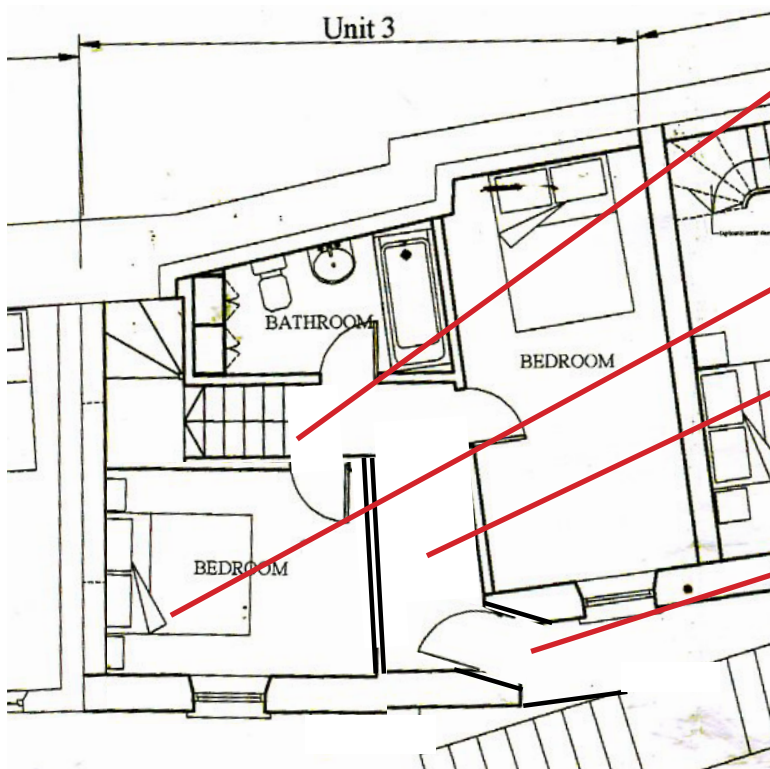
One extra tread to stair if necessary

Kitchen extended into former stair hall

Window moved left to allow more light to rear of kitchen and to remain sitting above bedroom window on ground floor.

New narrow fixed light window over door

**First Floor  
3, Old Quay Ope**



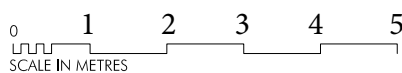
Stair hall remains as before save for one step less in lower flight.

Left hand or uphill bedroom moved left to allow central hall. Window of bedroom aligns with one on first floor.

Entrance door and hall moved to centre of house and materially down hill to face and enter from steps and platform. Using existing approved angle in house elevation.

Door pattern and furniture remain as before

**Ground Floor  
3, Old Quay Ope**



Scale approximately 1:100

This drawing is taken from the previously approved proposals, the drawings being 6236 11 revision B and 6236 12 revision A from Russell Taylor Architects

**3, Old Quay Ope**  
Sheet summarising the proposed changes in interior layout.

Approximately 1:100

**Drawing 7: July 2019**