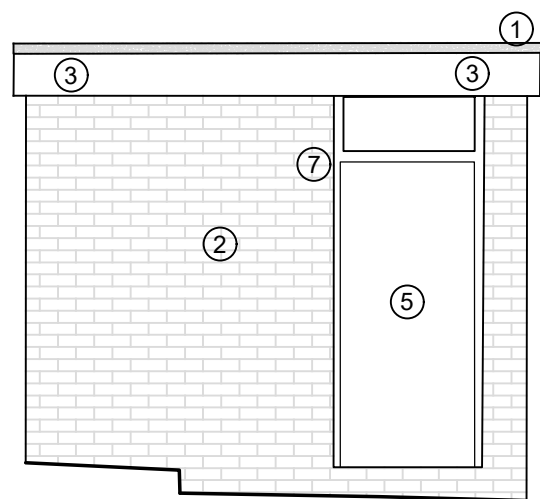
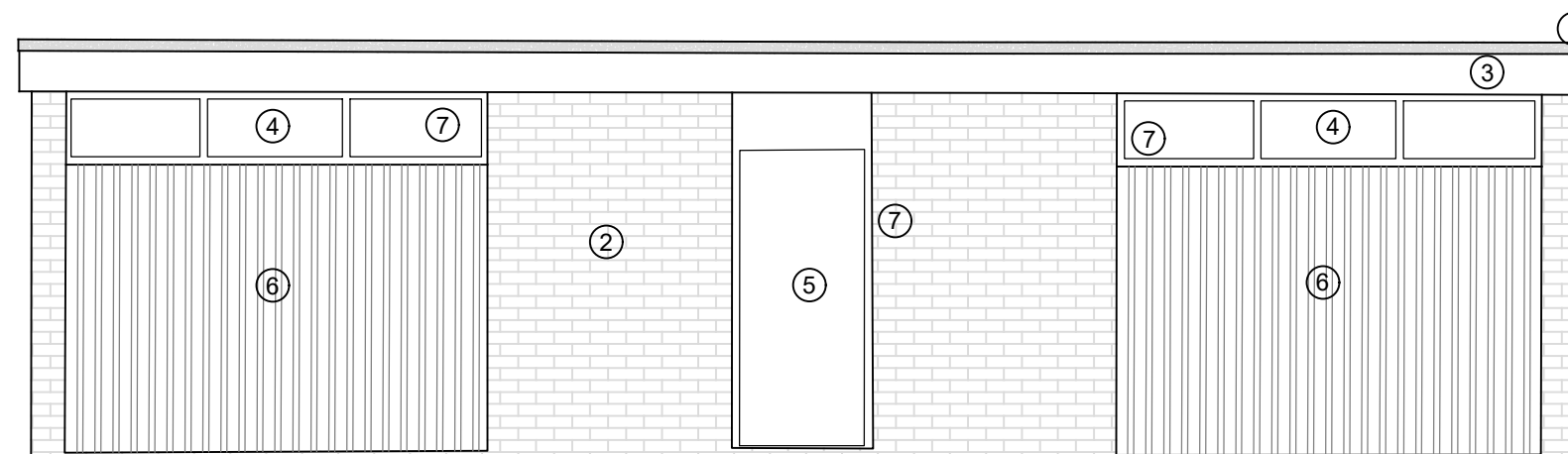


Proposed Plan



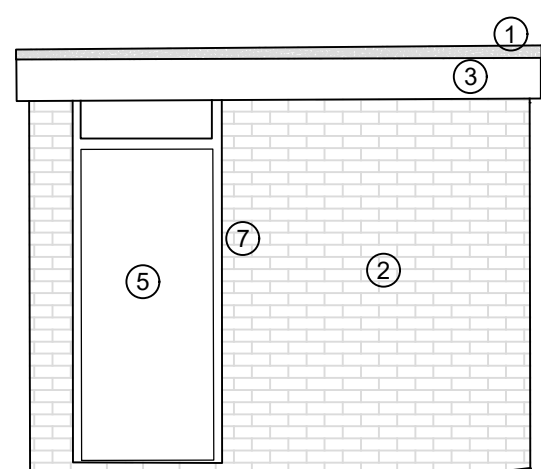
Datum 47.00m AOD

Existing Elevation 1 - South Western Elevation



Datum 47.00m AOD

Existing Elevation 2 - North Western Elevation



Datum 47.00m AOD

Existing Elevation 3 - North Eastern Elevation



Datum 47.00m AOD

Existing Elevation 4 - South Eastern Elevation

Safety Health and Environmental Information A2

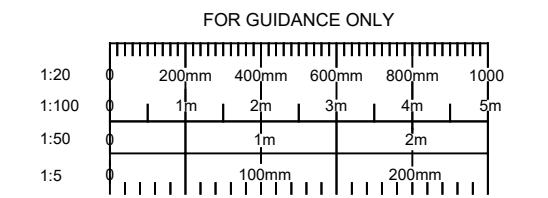
The following risks are identified as unusual or unfamiliar to a competent contractor

CONSTRUCTION RISKS
There are no significant or unfamiliar risks

DEMOLITION RISKS (FUTURE)
There are no significant or unfamiliar risks

It is assumed that all work will be carried out by a competent contractor working, where appropriate, to an approved method statement

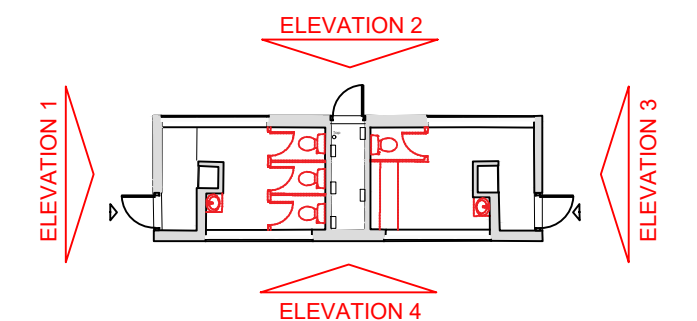
Notes:



KEY OF MATERIALS

- 1 FLAT ROOF RE-FELTED
- 2 EXISTING BRICKWORK CLEANED
- 3 UPVC FASCIAS BOARDS CLEANED
- 4 NEW POWDER COATED ALUMINUM DOUBLE GLAZED WINDOWS (DARK GREY). NBS: L10.330
- 5 NEW EXTERNAL STEEL DOORSET (DARK GREY), WITH REFURBISHED TIMBER OVERPANEL (DARK GREY) AND NEW IRONMONGERY. NBS:L20/480
- 6 REFURBISH PANEL (DARK GREY). NBS: M60/131
- 7 METAL SECURITY GATES (OVER DOORS & WINDOWS) RETAINED
- 8. NEW HIT AND MISS TIMBER CLADDING APPLIED OVER REFURBISHED RENDERED PANEL. NBS: G20/660

--- TO BE DEMOLISHED



| | | | |
|-----|----------------|---------|---------|
| A | PLANNING ISSUE | Jan '24 | JK |
| REV | DETAILS | DATE | CHECKED |



| | | | |
|----------------------------------|-------|-------------|-----------|
| Brinton Park | | DRAWING NO. | |
| Proposed Toilet Block Elevations | | 3482 - 089 | |
| Wyre Forest District Council | DRAWN | CHECKED | SCALE |
| | JK | AM | 1:50 @ A2 |

PLANNING

ISO 9001 REGISTERED FIRM ISO 14001 REGISTERED FIRM

The copyright of this drawing and design is vested in the Architect and must not be copied or reproduced without written consent. All dimensions given are to be verified on site by the responsible contractor. Do not scale dimensions from this drawing.

bhb architects