

Tree protection plan
Location of trees, categorisation & protection/management proposals

Land at Calmore Croft Farm, Salisbury Road
Calmore

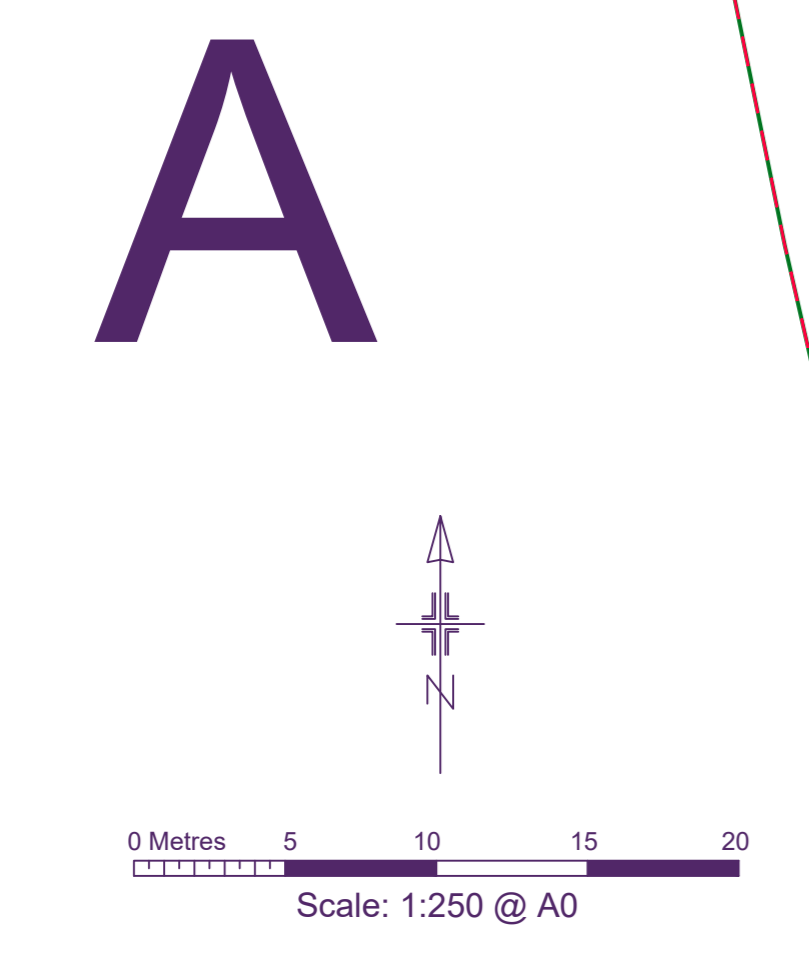
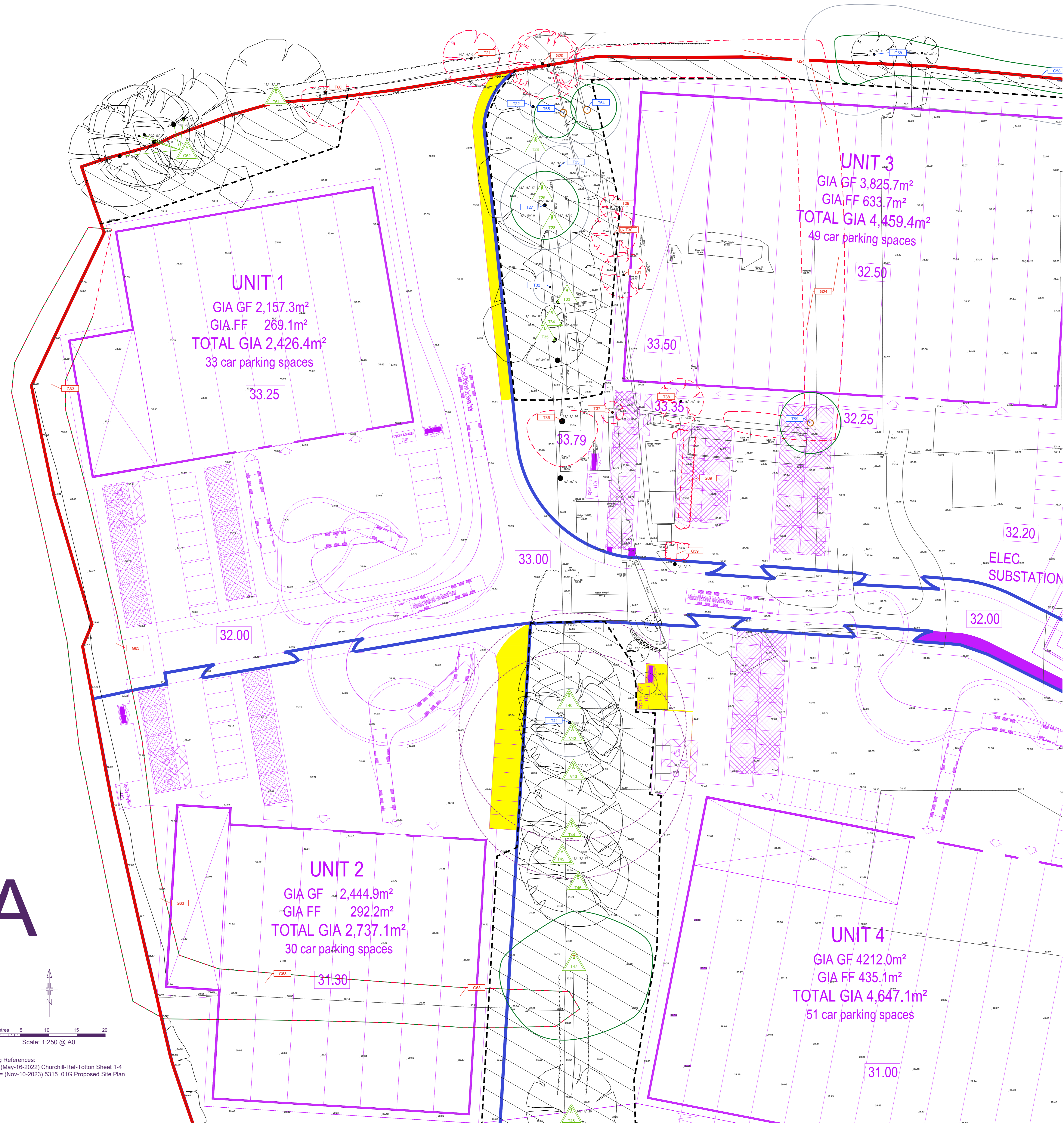
Barrell Plan Ref: 17037-4 A

barrell
TREE CONSULTANCY

Permission is granted to scale from this drawing for Local Authority Planning Approval purposes relating to tree protection measures only. Where applicable this drawing is to be read in conjunction with the arboricultural report. This drawing is the copyright of Barrell Tree Consultancy 2024 ©

This drawing to be reproduced in colour only.
www.barrelltreecare.co.uk

- BS category A Trees of high quality
- BS category B Trees of moderate quality
- BS category C Trees of low quality
- BS category U Trees unsuitable for retention
- Trees to be removed
- Proposed layout
- Estimated tree positions not included on original land survey and/or adjusted crown spreads
- Protective barrierfencing
- Construction exclusion zone (CEZ)
- Precautionary area where new surfacing to create parking bays and road and footpath access will be constructed within RPAs using a cellular confinement system in accordance with the guidance set out within SGN 9
- Root protection area (RPA) boundaries for category A and B trees
- Root protection area (RPA) boundaries for category C trees



Drawing References:
Topo = (May-16-2022) Churchill-Ref-Totton Sheet 1-4
Layout = (Nov-10-2023) 5315_01G Proposed Site Plan

