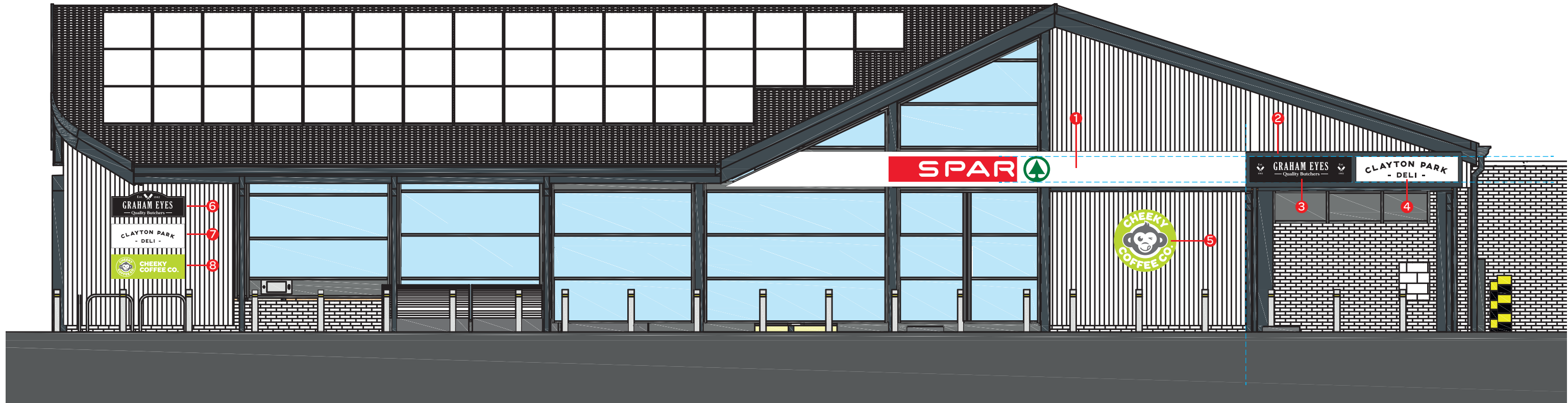


scale 1:100 @ a3

SCALE 1:100



1 Specification & planning notes
3mm aluminium tray sign with 130mm returns powder coated
ral 9003 (semi gloss) c/w fret cut logo backed in 5mm opal acrylic
c/w translucent vinyls applied to face
size: 13492mm x 903mm
Height from ground level to bottom of advertisement: 3750mm
Signage projection from building: 130mm
Height of logo/text: 657mm
Illumination method: led
Illumination value: 300cndI per sq.m

2 Specification & planning notes
3mm aluminium tray sign with 30mm returns powder coated
ral 7016 (semi gloss)
size: 5603mm x 903mm
Height from ground level to bottom of advertisement: 3750mm
Signage projection from building: 30mm
Height of logo/text: n/a
Illumination method: n/a
Illumination value: n/a

3 Specification & planning notes
3mm aluminium tray sign with 100mm returns powder coated
ral 9005 (semi gloss) c/w fret cut logo backed in 5mm opal acrylic
size: 2636mm x 653mm
Height from ground level to bottom of advertisement: 3885mm
Signage projection from building: 100mm
Height of logo/text: 366mm
Illumination method: led
Illumination value: 300cndI per sq.m

4 Specification & planning notes
3mm aluminium tray sign with 10mm returns powder coated
ral 9003 (semi gloss) c/w built up letters with 30mm returns
and painted ral 9005 c/w halo illumination
size: 2636mm x 653mm
Height from ground level to bottom of advertisement: 3885mm
Signage projection from building: 185mm
Height of logo/text: 427mm
Illumination method: led
Illumination value: 300cndI per sq.m

5 Specification & planning notes
3mm aluminium roundel with 80mm returns powder coated
pantone 382 c (semi gloss) c/w fret cut logo backed in 5mm
opal acrylic c/w translucent vinyls applied to face
size: 1618mm x 1615mm
Height from ground level to bottom of advertisement: 1560mm
Signage projection from building: 80mm
Height of logo/text: 1469mm
Illumination method: led
Illumination value: 300cndI per sq.m

6 Specification & planning notes
3mm aluminium tray sign with 60mm returns powder coated
ral 9005 (semi gloss) c/w fret cut logo backed in 5mm opal acrylic
size: 1900mm x 692mm
Height from ground level to bottom of advertisement: 2967mm
Signage projection from building: 60mm
Height of logo/text: 556
Illumination method: led
Illumination value: 300cndI per sq.m

7 Specification & planning notes
3mm aluminium tray sign with 60mm returns powder coated
ral 9003 (semi gloss) c/w fret cut logo with 10mm push through
clear acrylic to be internally illuminated
size: 1900mm x 624mm
Height from ground level to bottom of advertisement: 2175mm
Signage projection from building: 60mm
Height of logo/text: 323mm
Illumination method: led
Illumination value: 300cndI per sq.m

8 Specification & planning notes
3mm aluminium tray sign with 60mm returns powder coated
pantone 382 c (semi gloss) c/w fret cut logo backed in 5mm
opal acrylic c/w translucent vinyls applied to face
size: 1900mm x 625mm
Height from ground level to bottom of advertisement: 1376mm
Signage projection from building: 60mm
Height of logo/text: 506
Illumination method: led
Illumination value: 30cndI per sq.m