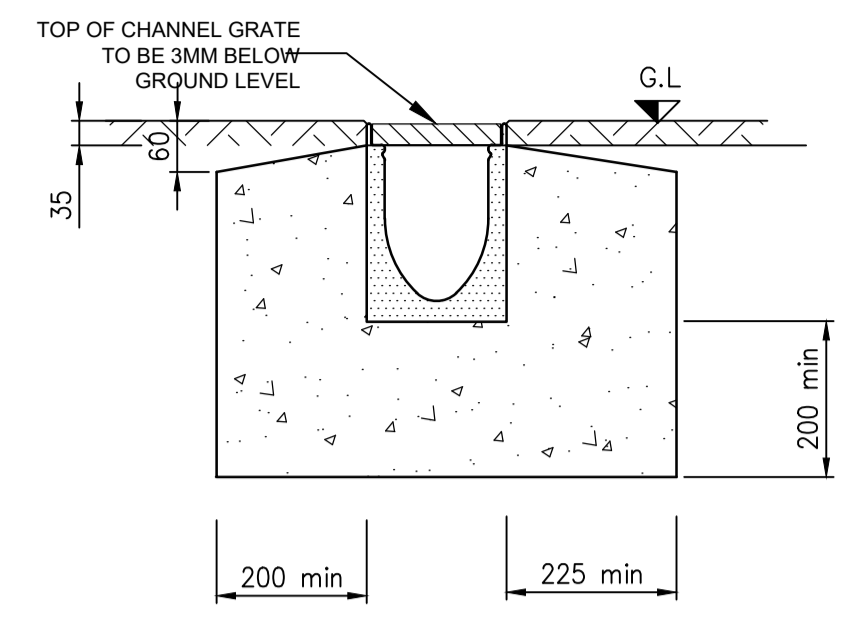
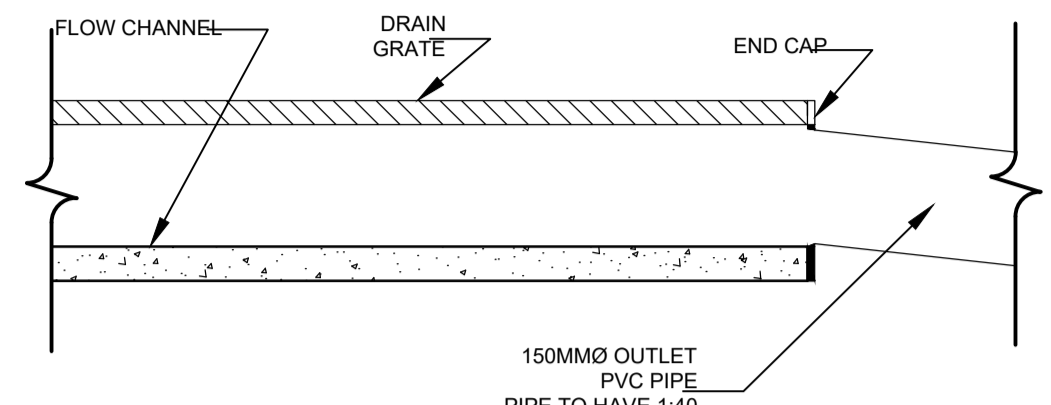


**TYPICAL ROAD GULLY DETAIL**  
SCALE 1:20

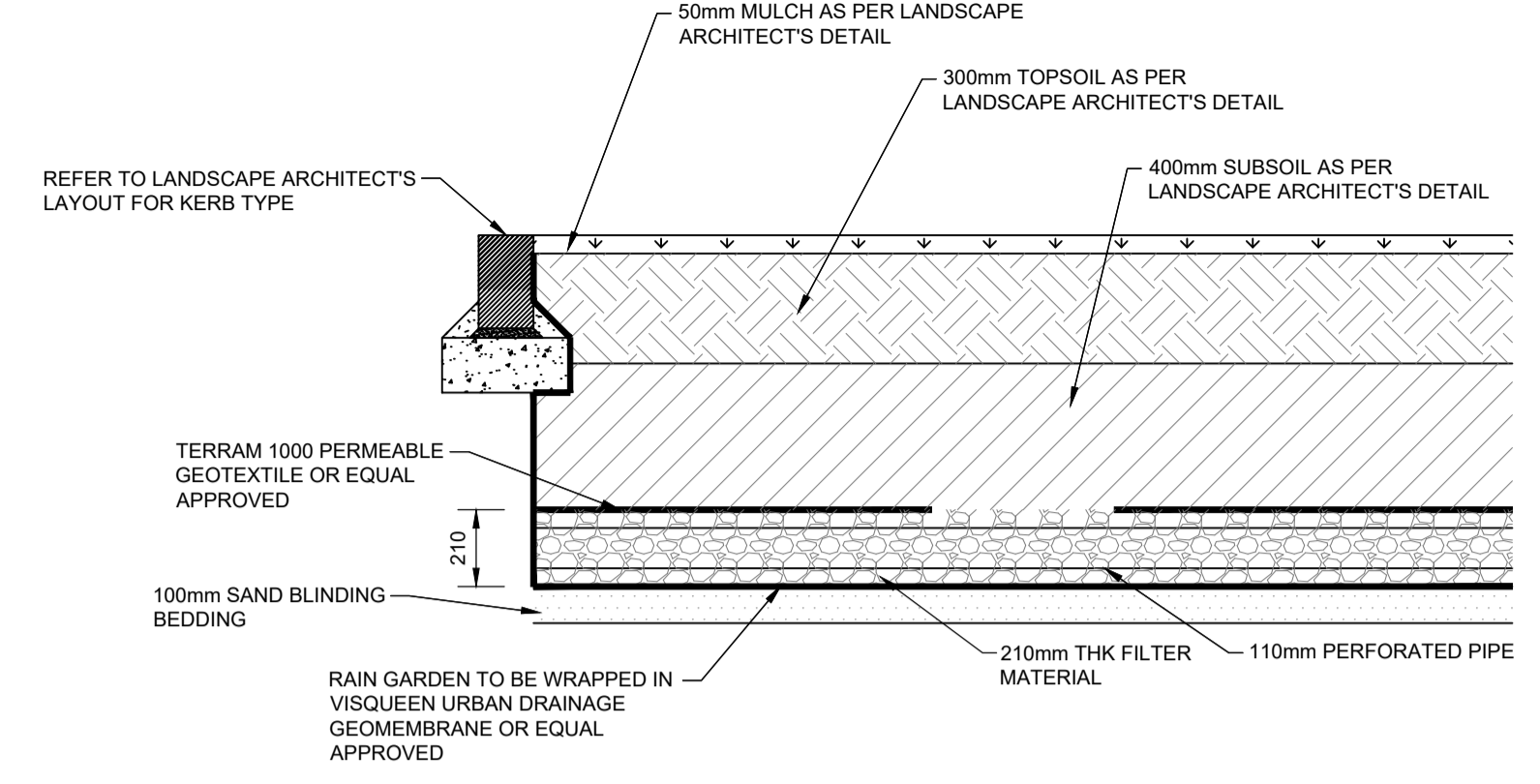


**BEDDING DETAILS**

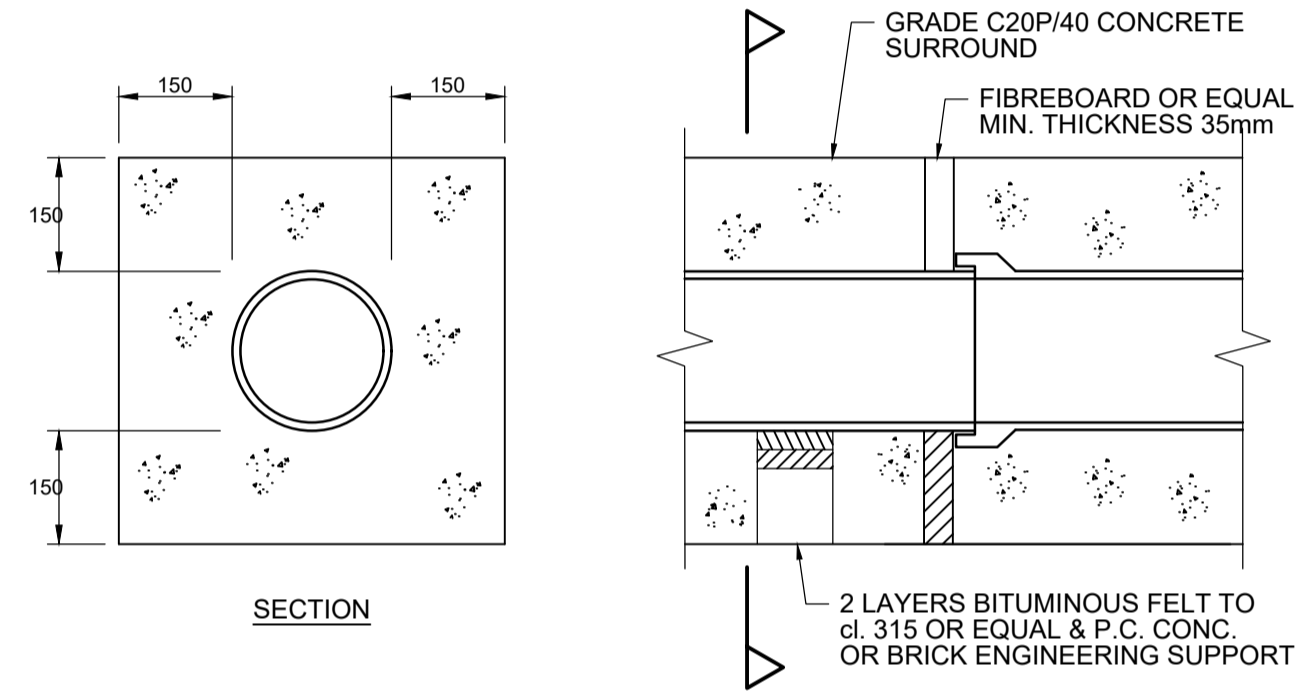


**LONG SECTION**

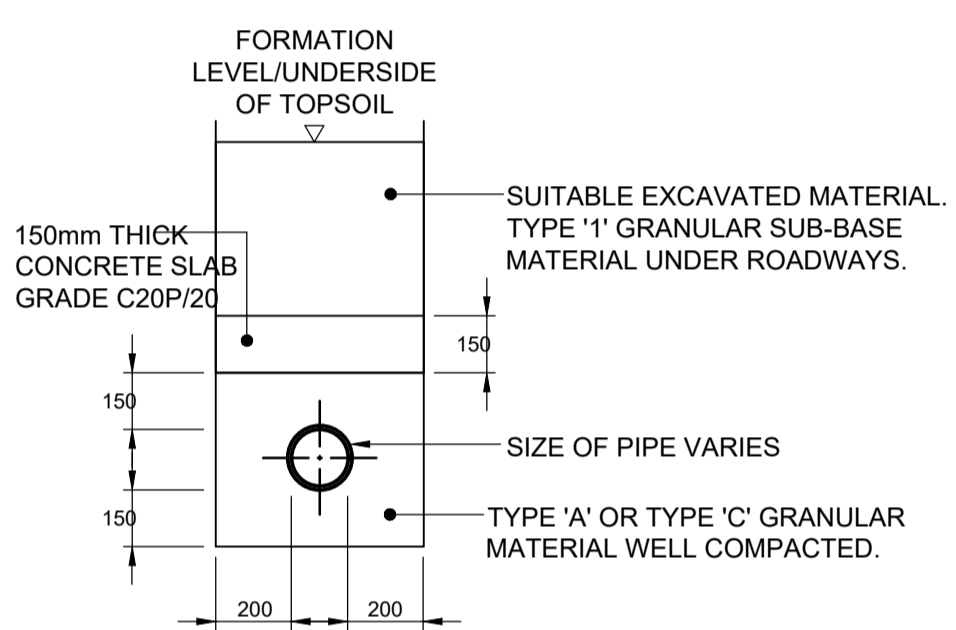
**150MM WIDE BORE LINEAR DRAIN DETAIL**  
SCALE 1:10



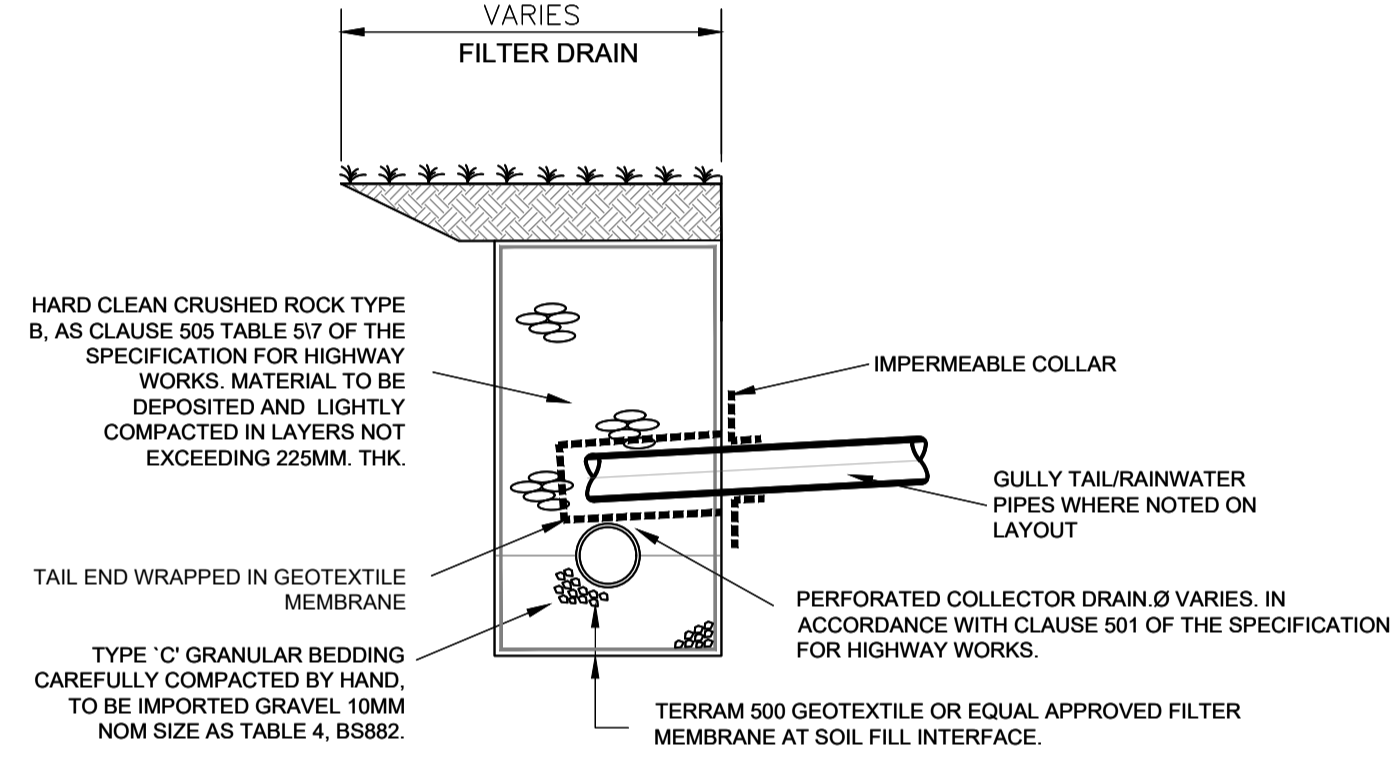
**TYPICAL SECTION THROUGH RAIN GARDEN**  
SCALE 1:20



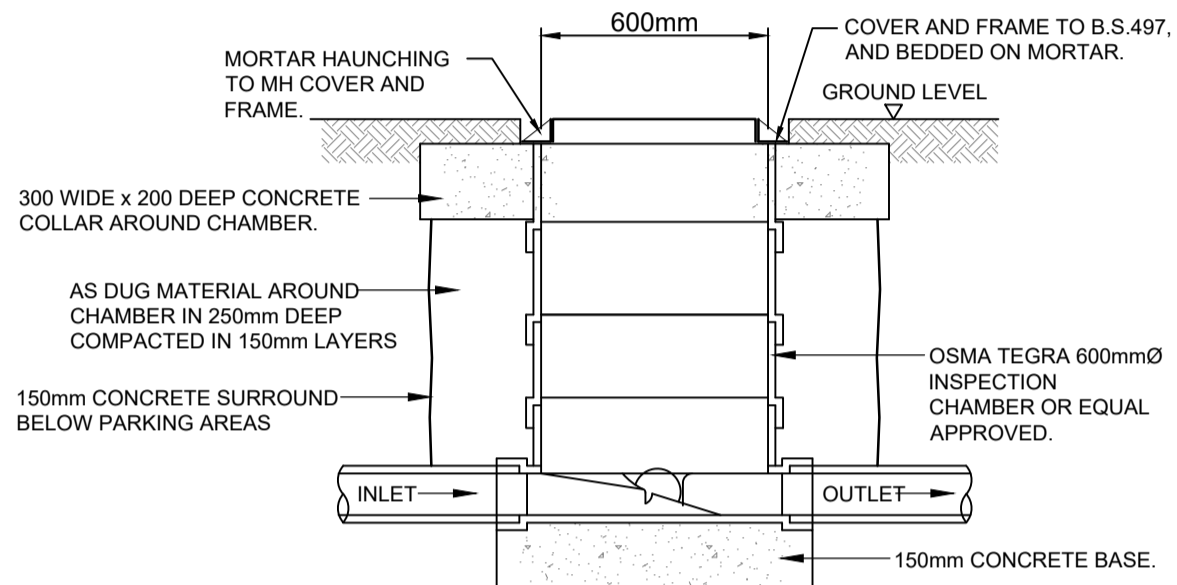
**TYPICAL CONCRETE SURROUND DETAIL <= 1m COVER**  
(SPIGGOT & SOCKET PIPES SHOWN : SLEEVED PIPES SIMILAR)  
SCALE 1:20



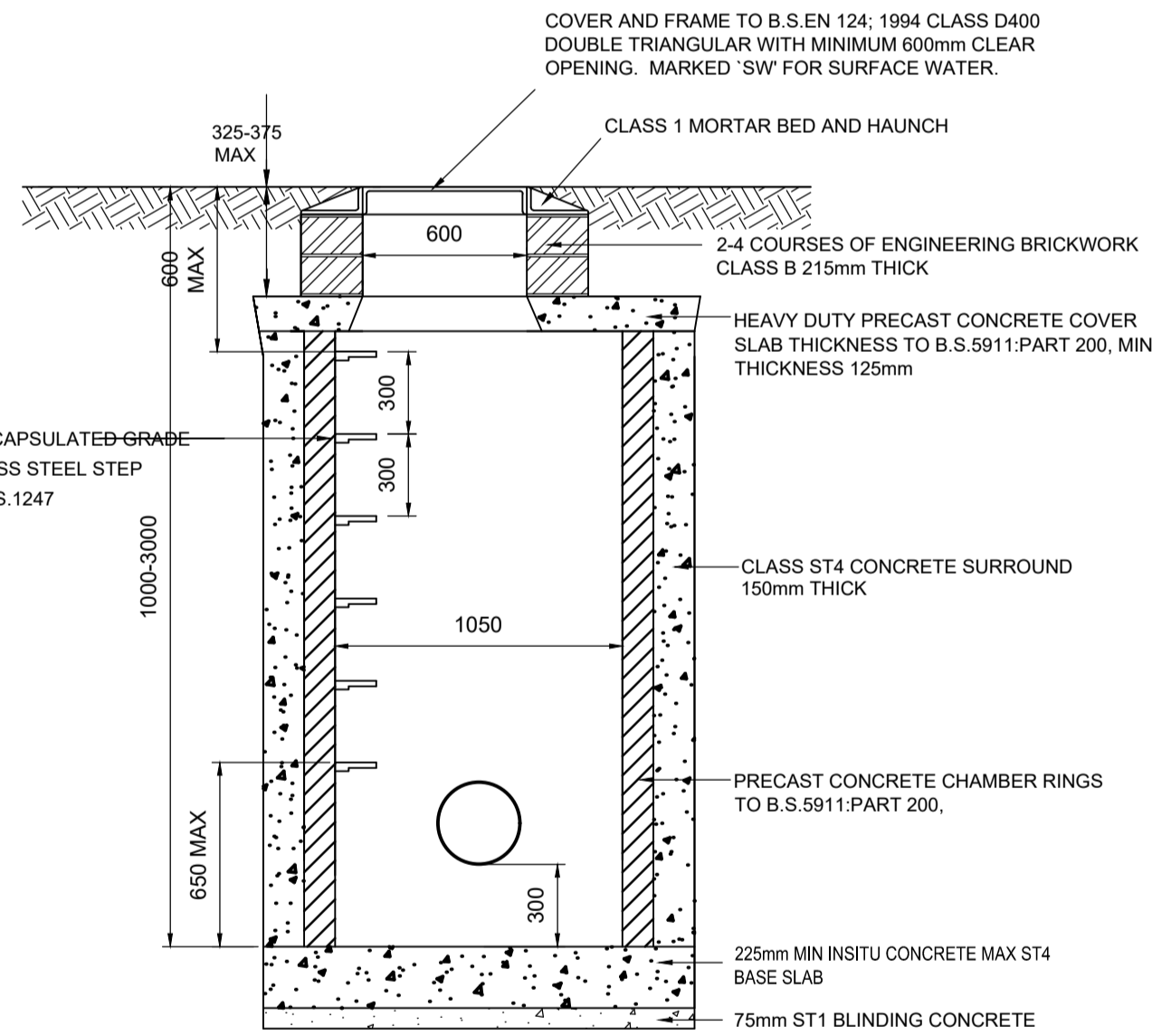
**CONCRETE PROTECTION DETAIL FOR uPVC PIPES (ALTERNATIVE)**  
SCALE 1:20



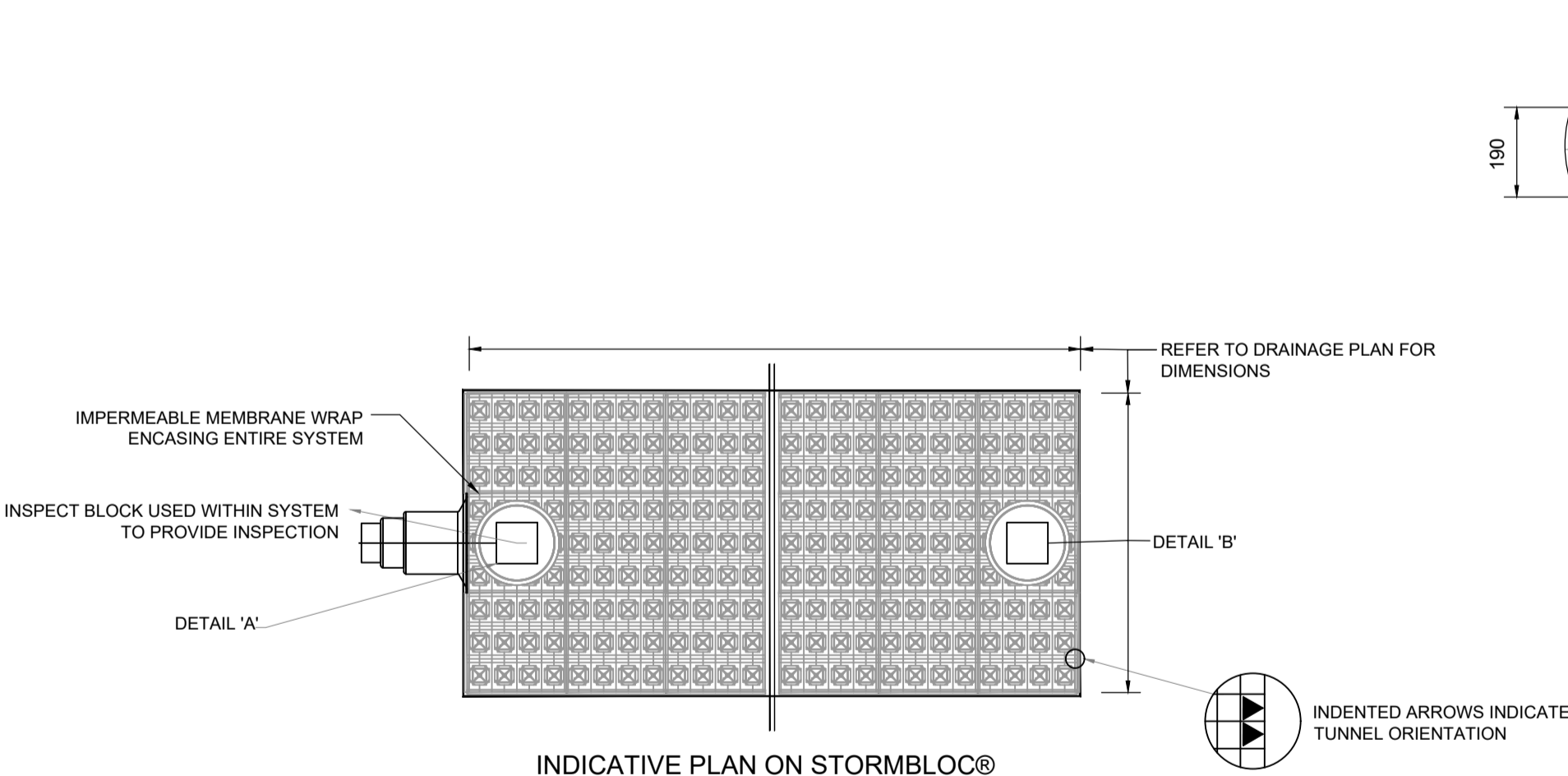
**TYPICAL FILTER TRENCH DETAIL**  
SCALE 1:20



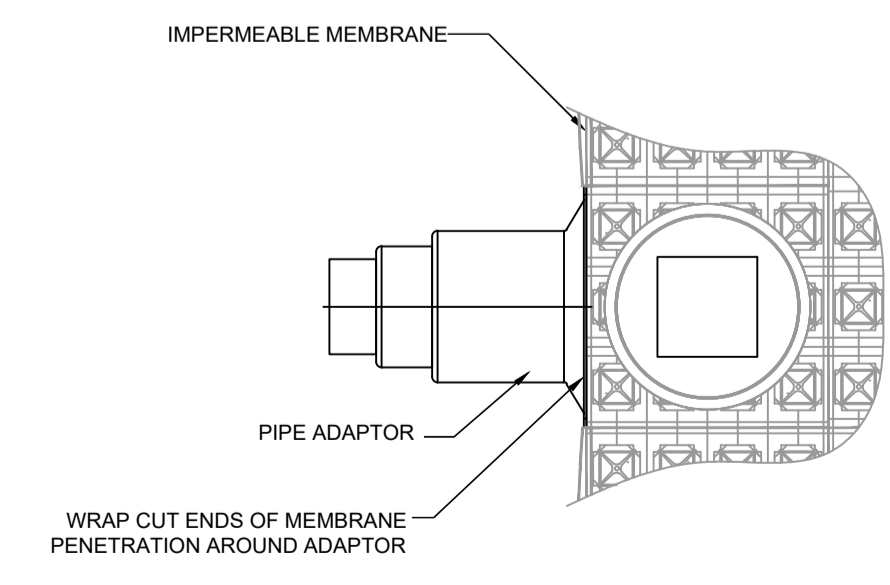
**TYPICAL INSPECTION CHAMBER DETAIL**  
SCALE 1:20



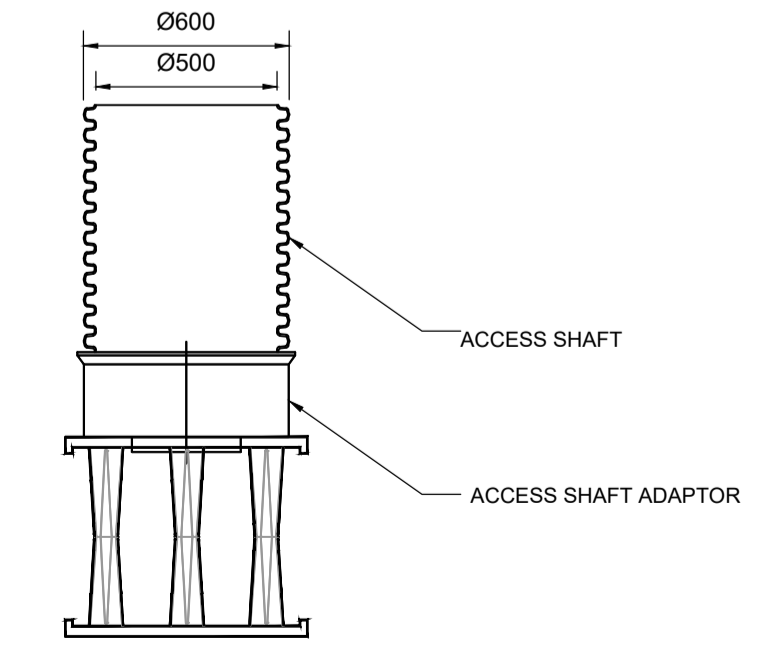
**SECTIONAL ELEVATION A-A**



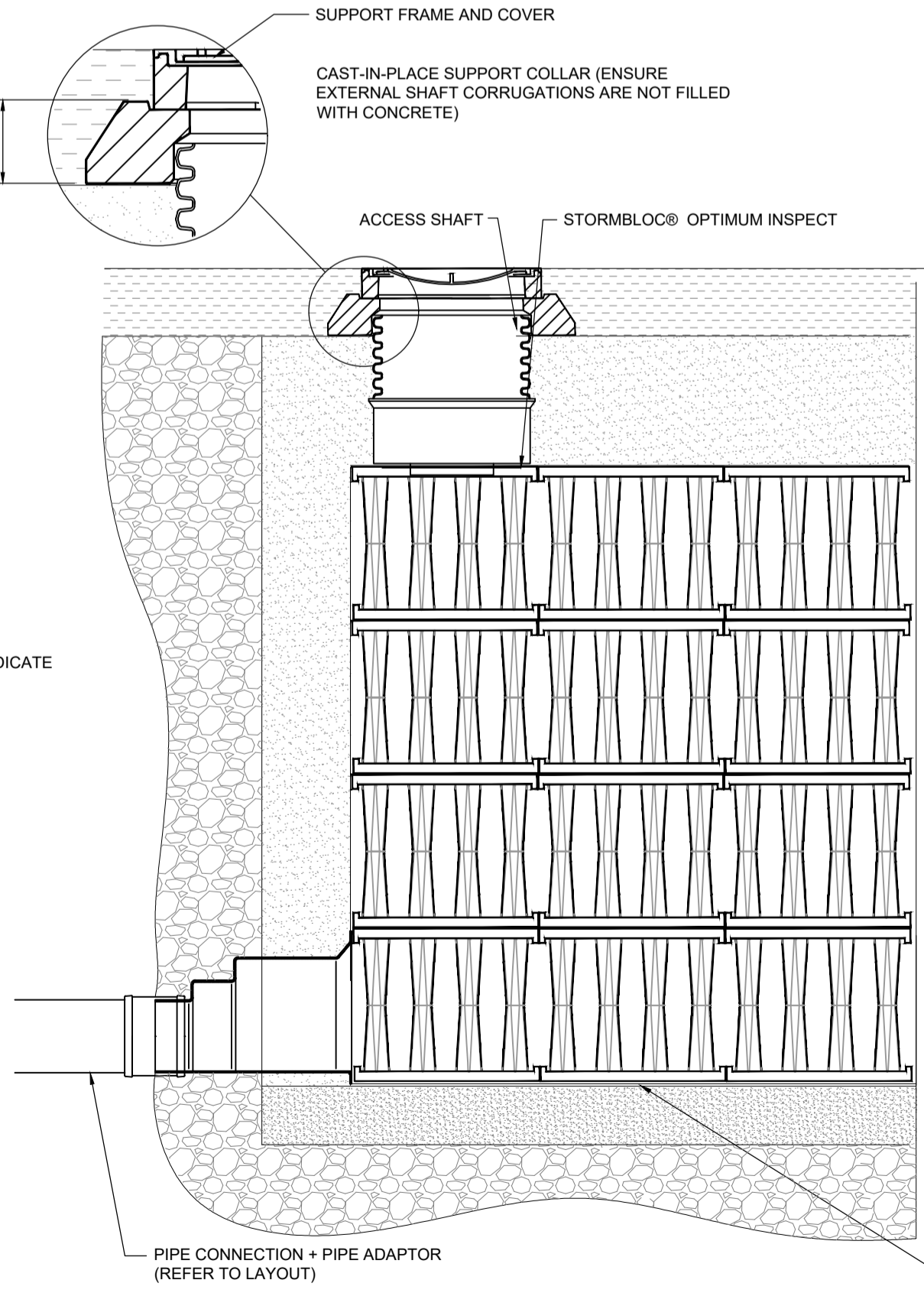
**INDICATIVE PLAN ON STORMBLOC® OPTIMUM SYSTEM**  
SCALE 1:25



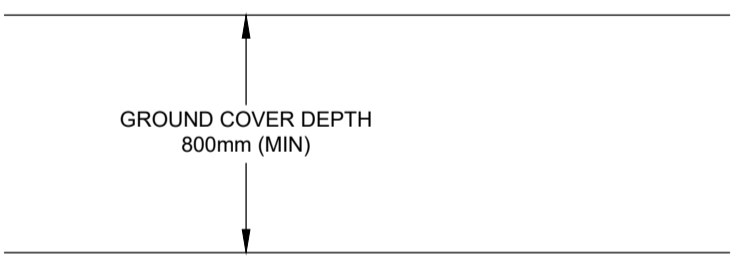
**DETAIL 'A' - PLAN VIEW STORMBLOC® OPTIMUM INSPECT PIPE AND MEMBRANE CONNECTION**  
SCALE 1:25



**DETAIL 'B' - ELEVATION VIEW STORMBLOC® OPTIMUM INSPECT WITH ACCESS SHAFT**  
SCALE 1:25

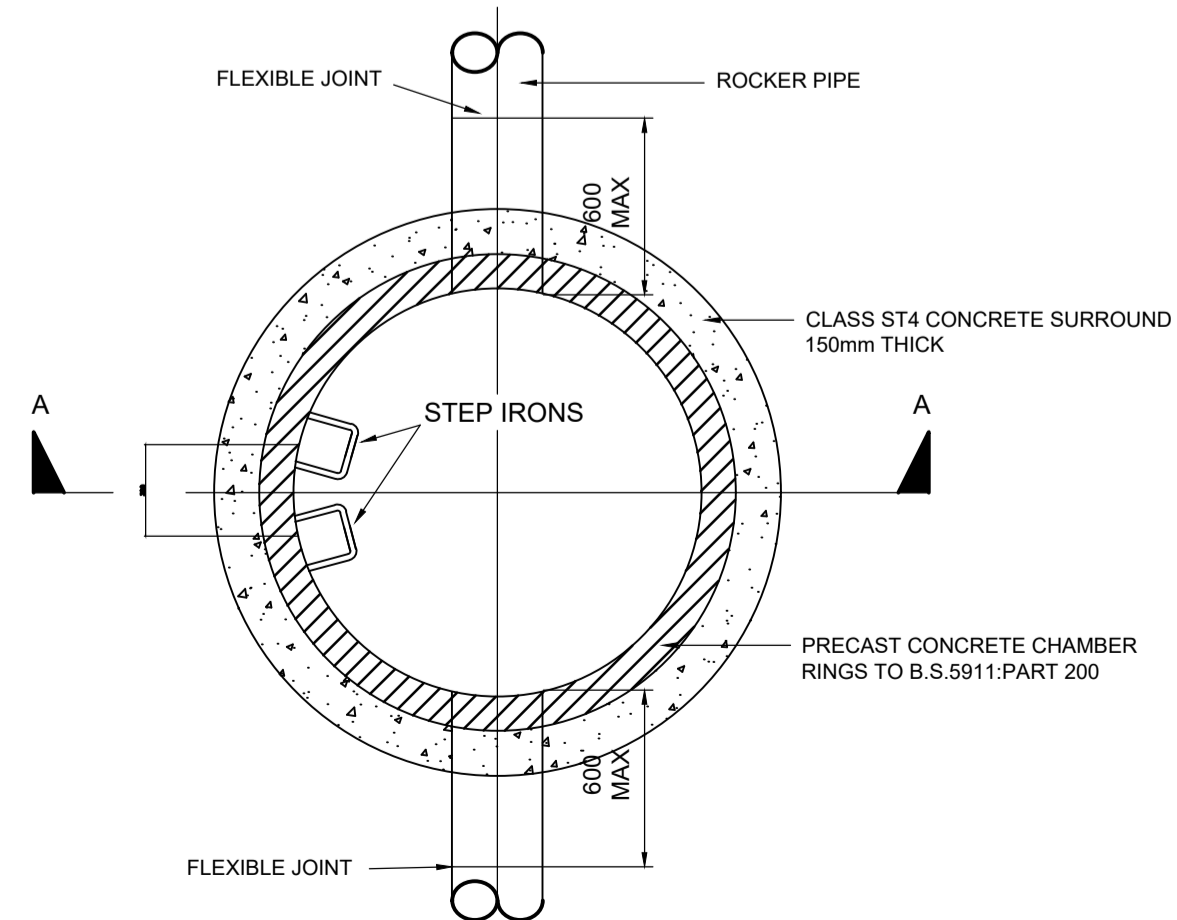


**INDICATIVE SECTION THROUGH STORMBLOC® OPTIMUM SYSTEM**  
SCALE 1:25



STORMBLOC® OPTIMUM SYSTEM  
4.0 BLOCKS DEEP  
FULL BLOCK LAYER HEIGHT = 660mm  
ALL BLOCKS AND INSPECT CHAMBERS = 800mm LONG x 800mm WIDE

STORMBLOC® OPTIMUM BASE  
MINIMUM 100mm DEEP COARSE SAND / GRAVEL  
UNDISTRIBUTED EARTH OR PREPARED SUBGRADE STRUCTURALLY SOUND, LEVEL AND FREE OF DEBRIS.



**TYPICAL SILT TRAP DETAIL**  
SCALE 1:25

blyth+blyth Project Ref: **GC22643**

Revisions	Date	Drn.
PO1 Stage 1 Issue	26/01/2024	RAF

**HUB STAGE 1**

North Lanarkshire Council / Hub SW / BAM Construction

Chryston High School Extension

Typical Drainage Construction Details Sheet 1 of 2

Drawn: RAF Ck'd: MMcC Scale: As Noted @ A1  
Date: JAN 24 Date: JAN 24 DO NOT SCALE

**BLYTH & BLYTH**  
Suite 3/5, Skypark 1  
8 Elliot Place Glasgow, G3 8EP  
Email: glasgow@blythandblyth.co.uk  
www.blythandblyth.co.uk Telephone: 0141 566 2000

Drawing No. CHS-BLY-XX-XX-DR-C-960005 P01 Revision