



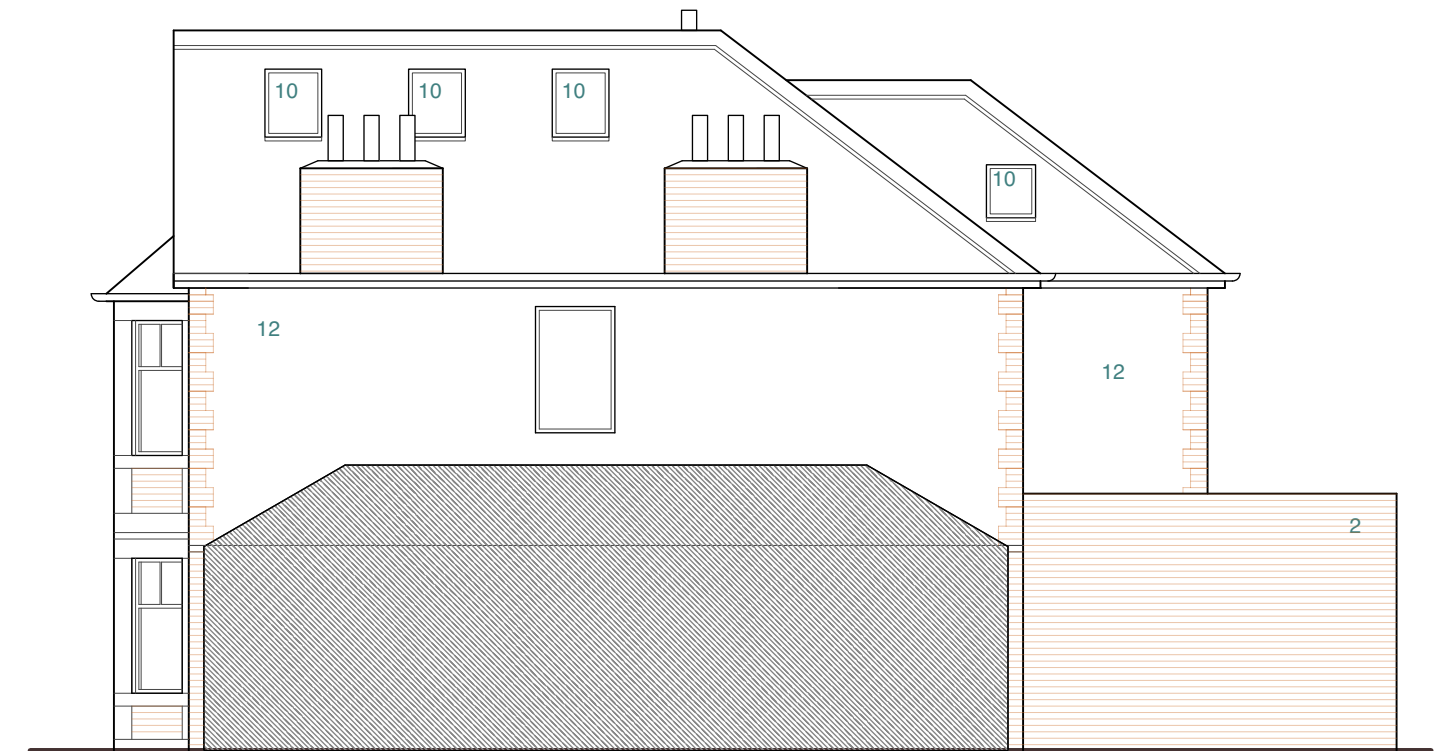
P12.1 Proposed South East Elevation



P12.2 Proposed South West Elevation



P12.3 Proposed North West Elevation



P12.4 Proposed North East Elevation

**MATERIALS**

- 1. PANTILE ROOF
- 2. RED BRICK
- 3. PAINTED PEBBLEDASH
- 4. WHITE UPVC WINDOWS
- 5. WHITE PANELLED DOOR
- 6. TIMBER BOARDED DOOR
- 7. GLAZED CONSERVATORY TYPE ROOF
- 8. FLAT TERRACOTTA TILES
- 9. SOLAR PANELS
- 10. ROOF LIGHTS

- 11. CABRIO ROOF LIGHTS
- 12. RENDER
- 13. PAINTED TIMBER WINDOWS
- 14. PPC ALUMINIUM WINDOWS
- 15. PPC ALUMINIUM SLIDING DOORS
- 16. PPC ALUMINIUM SLEEVED WINDOW
- 17. 'FRAMELESS' GLASS BOX BAY WINDOW
- 18. GREEN ROOF COVERING
- 19. SINGLE PLY MEMBRANE ROOF
- 20. GLAZED ROOF SYSTEM
- 21. TIMBER BALUSTRADE
- 22. VERTICAL TIMBER BATTENS

**Miller Partnership Architects**

101 OUSEBURN ROAD, NEWCASTLE UPON TYNE, NE6 5AF | Tel : +44 (0) 191 228 6243 | info@millerpartnershiparchitects.co.uk | www.millerpartnershiparchitects.co.uk

Drawing Number	Rev	Drawing Content	Scale	Date	Project
<b>P12</b>		Proposed Elevations	1: 100@A3	March 2024	<b>101.235</b> 2 Dene Crescent, Whitley Bay. NE26 3AL