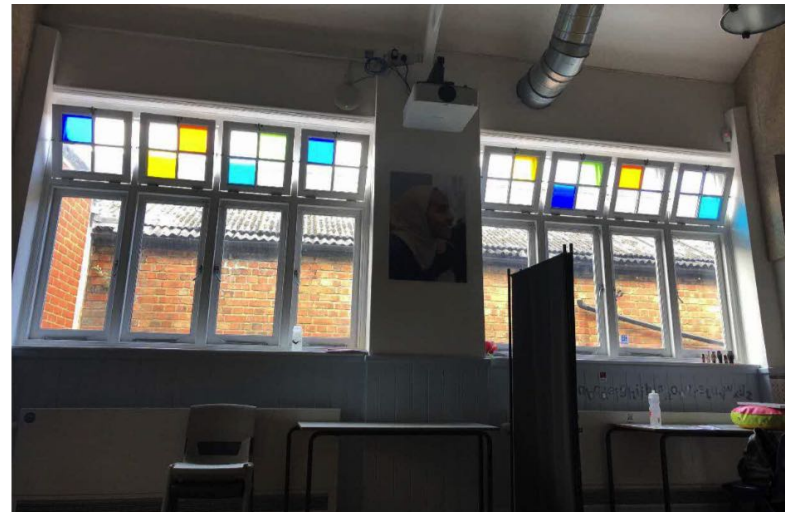
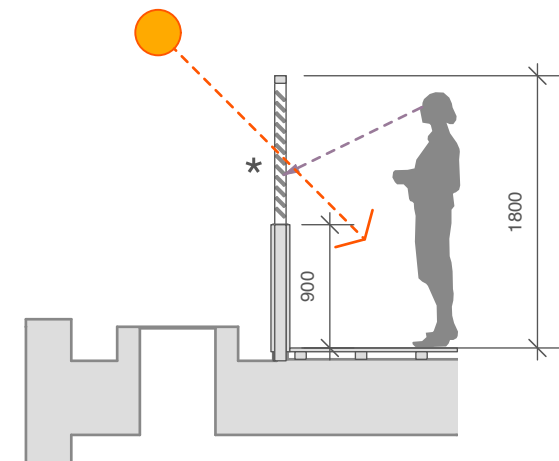


\*\* view from 1st floor classroom [generated from CAD model]



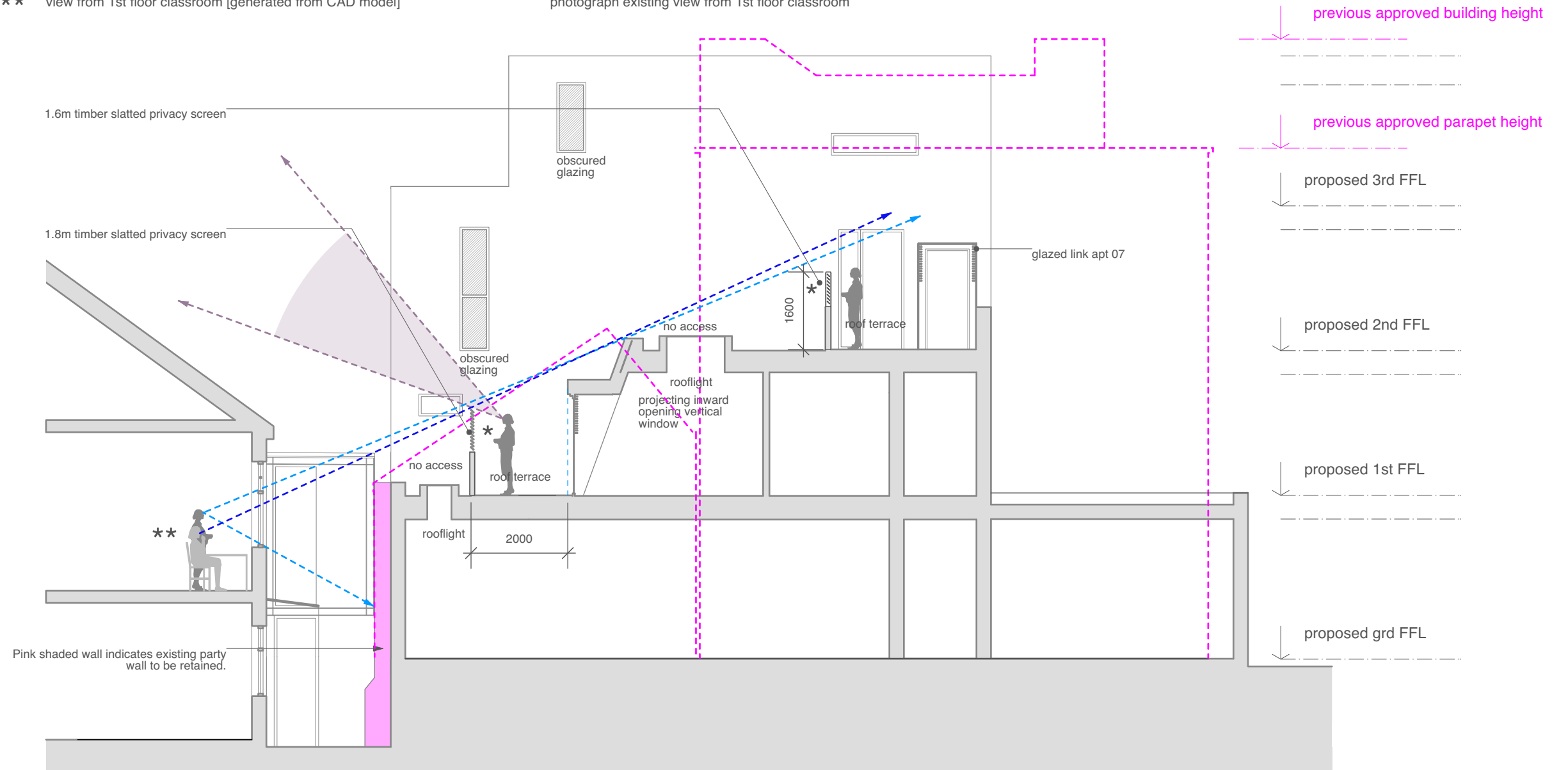
photograph existing view from 1st floor classroom

previous approved planning heights  
[approval: 163603FUL / 190465CPL]



\* timber slatted screen  
timber slats angled to prevent downward overlooking and allow daylight / sunlight from above

pink dashed line indicates outline of previous approved scheme  
[approval: 163603FUL / 190465CPL]



Pink shaded wall indicates existing party wall to be retained.

7394  
1 Mount Place and 6-8 Crown Street, W3



Notes

This drawing is for planning purposes only.  
Do not scale off the drawing.  
Use figured dimensions only.

No.	Date
E	28/11/23
F	12/12/23

Revision Notes

seated student shown  
revised following comments from AH

proposed section AA

P026  
1:100 @ A3  
23/07/2021

rbstudio architects

studio 01, 11 Crawshaw Road, Poole BH14 8QZ  
01202 700032  
rbstudio.co.uk | office.rbstudio@mac.com