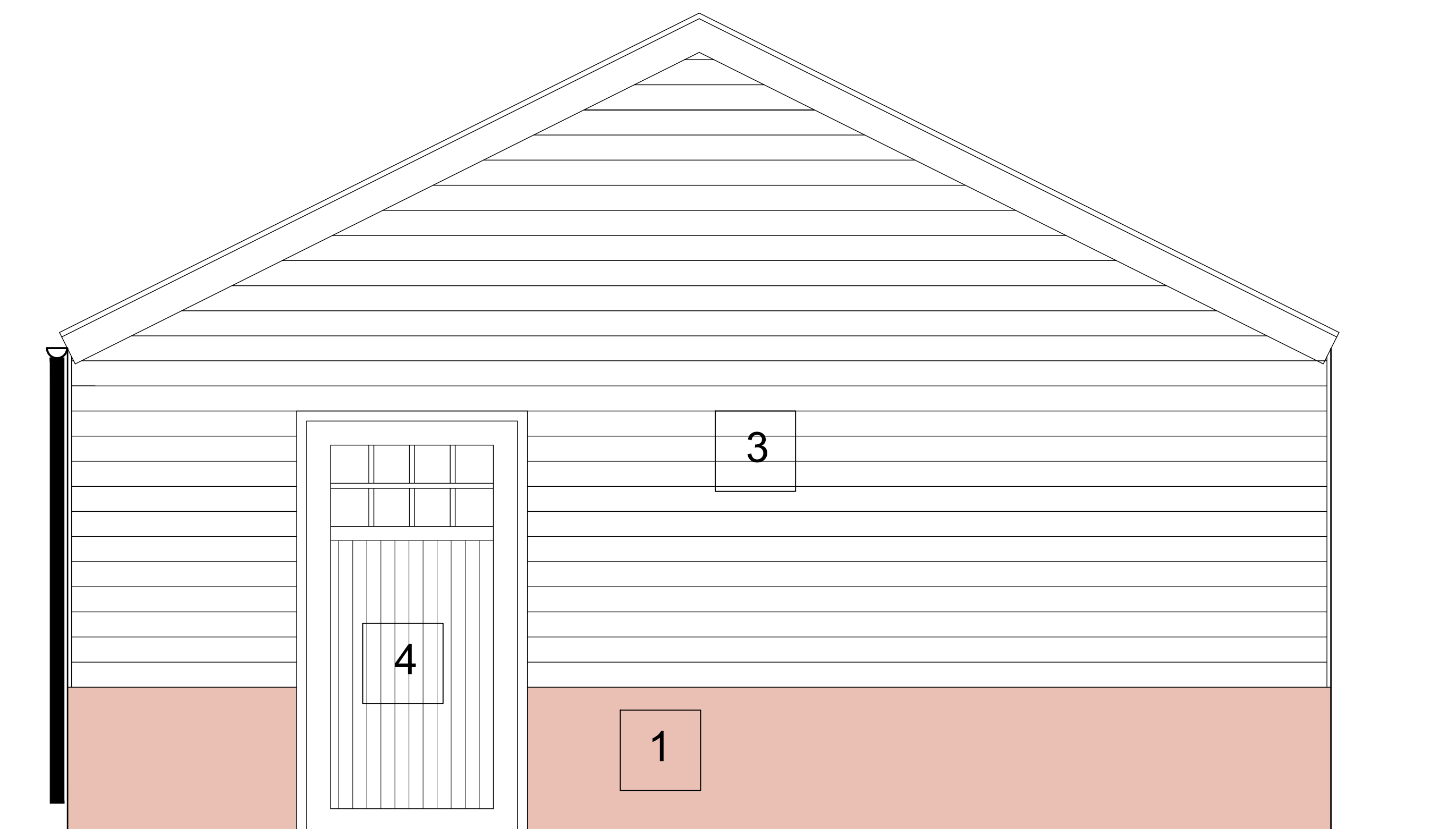


- 1 BRICKWORK
- 2 STAFFORDSHIRE BLUE TILES TO MATCH THE MAIN HOUSE ROOF TILES
- 3 TIMBER CLADDING
- 4 TIMBER GARAGE DOORS
- 5 TIMBER DOOR
- 6 TIMBER WINDOWS



ELEVATION TO NORTH WEST

Revision				Date	By	Chkd	CDM Notes	Project MOLINEUX, BATESWAY, LONGDON, LICHFIELD, STAFFORDSHIRE			Drawing PROPOSED ELEVATION TO NORTH WEST			Client Matt and Vanessa		
								Scale 1:20(A1)	Dated 07.01.24	Job No. 002	Drawing No. DG04	Drawn by MF	Checked -	C/Sft Element FEASIBILITY	Revision -	