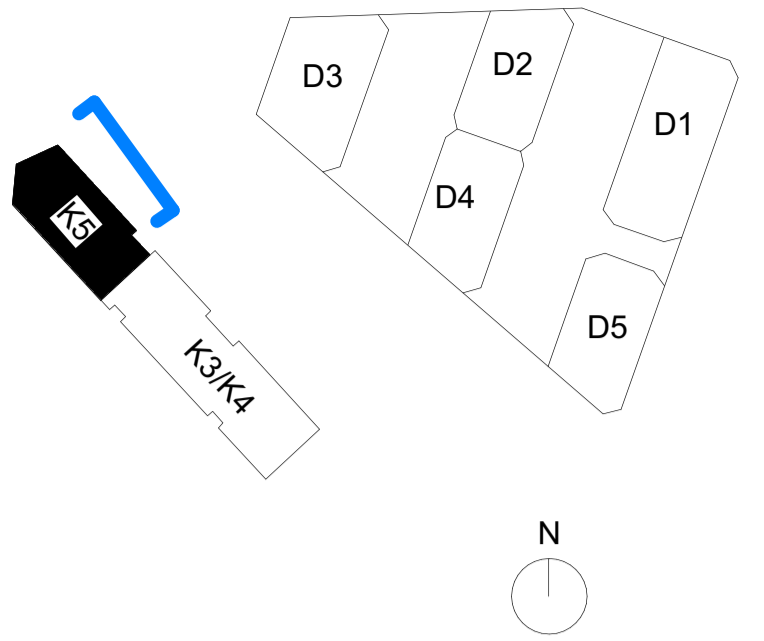
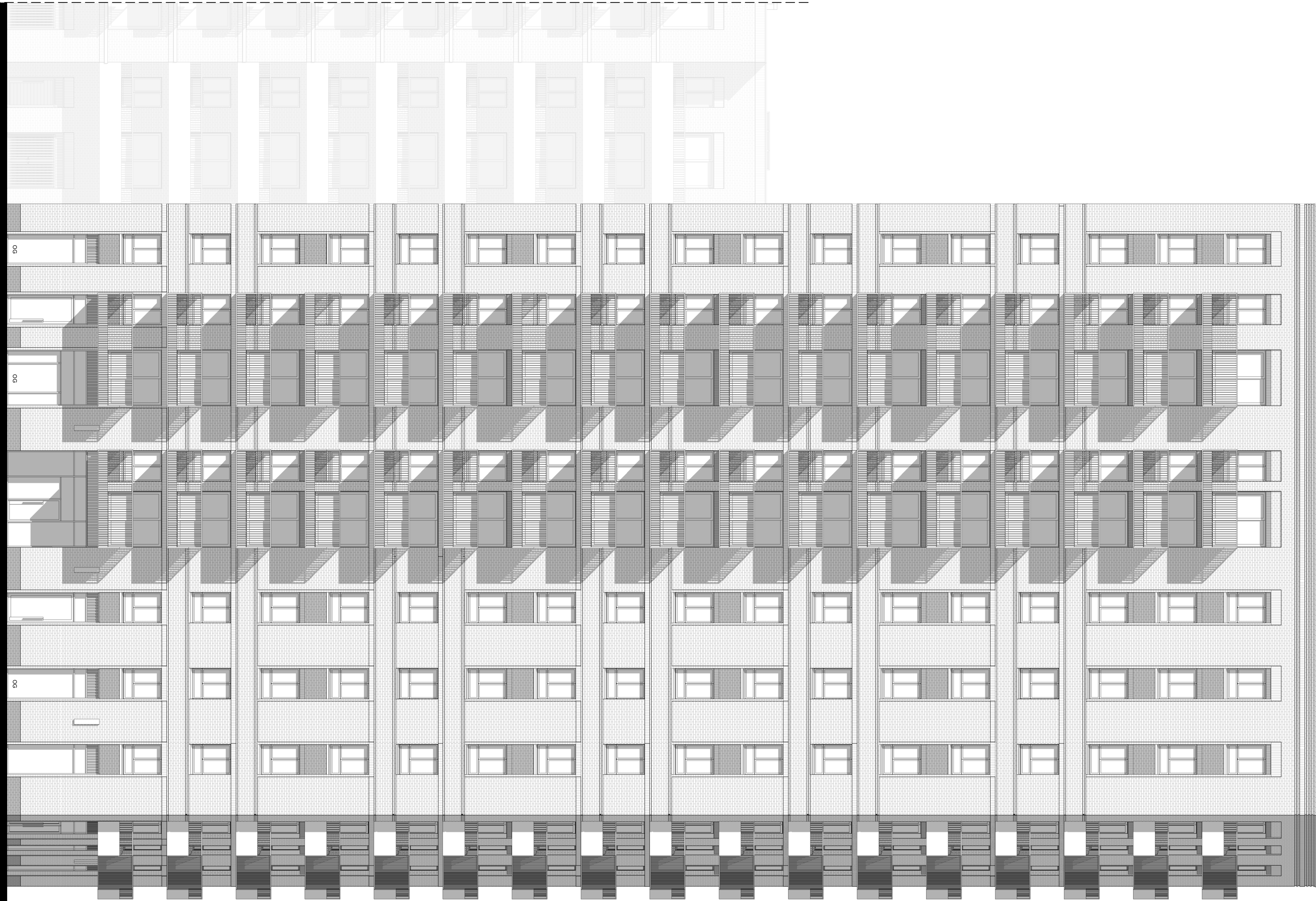


03. OBSCURE GLASS



KZZ-L00-FFL	4500
KZZ-L01-FFL	4500
KZZ-L02-FFL	7575
KZZ-L03-FFL	10650
KZZ-L04-FFL	13725
KZZ-L05-FFL	16800
KZZ-L06-FFL	19875
KZZ-L07-FFL	22950
KZZ-L08-FFL	26025
KZZ-L09-FFL	29100
KZZ-L10	32175
KZZ-L11-FFL	35250
KZZ-L12-FFL	38325
KZZ-L13-FFL	41400
KZZ-L14-FFL	44475
KZZ-L15-FFL	47550
KZZ-L16-FFL	50625
KZZ-L17-FFL	53700
KZZ-L18-FFL	57300
KZZ-L19-PRT	58425

0m 2m 4m 6m 8m

CDM REGULATIONS 2015. All current drawings and specifications for the project must be read in conjunction with the Designer's Hazard and Environment Assessment Record. All intellectual property rights reserved.

Site levels, topography and setting out based on surveys, information and reports listed:  
Ordnance survey dated 2022 Licence no. 100022432  
Plowman Craven survey No. 47440-PCL-TO-XX-DR-Y-00002 REV P02 dated July 2022

Lines shown within plots are indicative only.  
Lift motor rooms, plant, plan acoustics surrounds and flue extracts will not exceed three meters in height above indicated AOD.  
Top parapet levels will not exceed 2m above indicated AOD with a construction tolerance of +/- one meter

Rev	Date	Description
P00	2024-03	Issued for Planning

Dwn	Ckd	Drawn	NS
JJ	CF	Checked	CF
		Date	2023-12-19
		Scale @ A1	1 : 100

BA10030 RAR D&K Blocks

Proposed Building K5 North East  
Elevation

Z429- PRP01- K5- ZZ- DR- A-880-580

REV P00  
FOR PLANNING

