

D003 COMMERCIAL L00-FFL
8625

D234 L01-FFL
13125

D234 L02-FFL
16200

D234 L03-FFL
19275

D234 L04-FFL
22350

D234 L05-FFL
25425

D234 L06-FFL
28500

D234 L07-FFL
31575

D034 L08-FFL
34650

D034 L09-FFL
37725

D034 L10-FFL
40800

D034 L11-FFL
43875

D034 L12-FFL
46950

D034 L13-FFL
50025

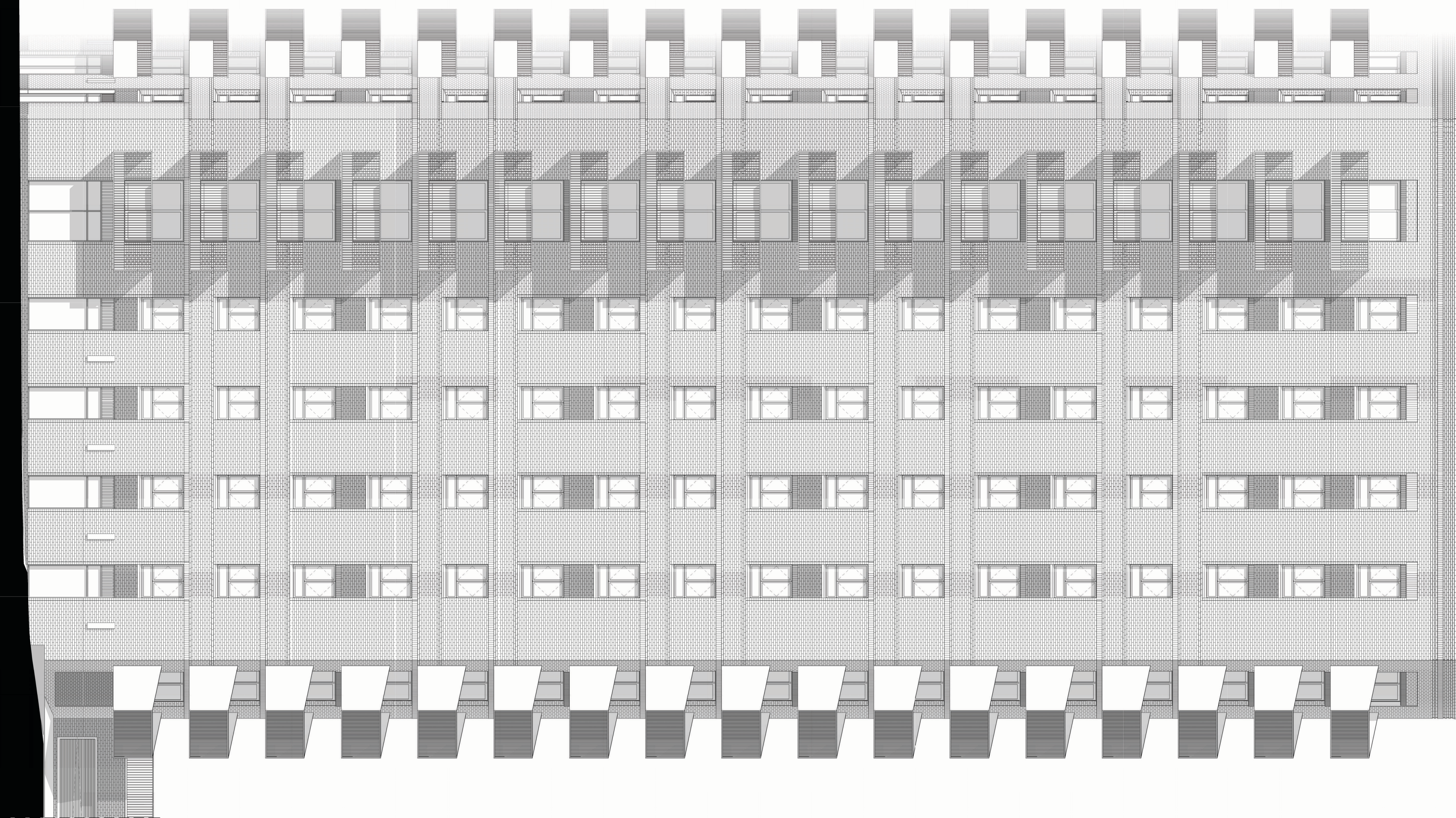
D034 L14-FFL
53100

D034 L15-FFL
56175

D003 L16-FFL
59250

D003 L17-FFL
62325

D003 LRF-FFL
65400



0m 2m 4m 6m 8m

CDM REGULATIONS 2015. All current drawings and specifications for the project must be read in conjunction with the Designer's Hazard and Environment Assessment Record. All intellectual property rights reserved.

Site levels, topography and setting out based on surveys, information and reports listed:
Ordnance survey dated 2022 Licence no. 100022432
Plowman Craven survey No. 47440-PCL-TO-XX-DR-Y-00002 REV P02 dated July 2022

Lines shown within plots are indicative only.
Lift motor rooms, plant, plan acoustics surrounds and flue extracts will not exceed three meters in height above indicated AOD.
Top parapet levels will not exceed 2m above indicated AOD with a construction tolerance of +/- one meter

Rev	Date	Description
P00	2024-03	Issued for Planning

Dwn	Ckd	Drawn	AV
AV	CF	Checked	CF
		Date	2023-12-19
		Scale @ A1	1 : 100

BA10030 RAR D&K Blocks
Proposed Building D3 South
West Elevation

Z429- PRP01- D3- ZZ- DR- A-880-383
REV P00
FOR PLANNING

