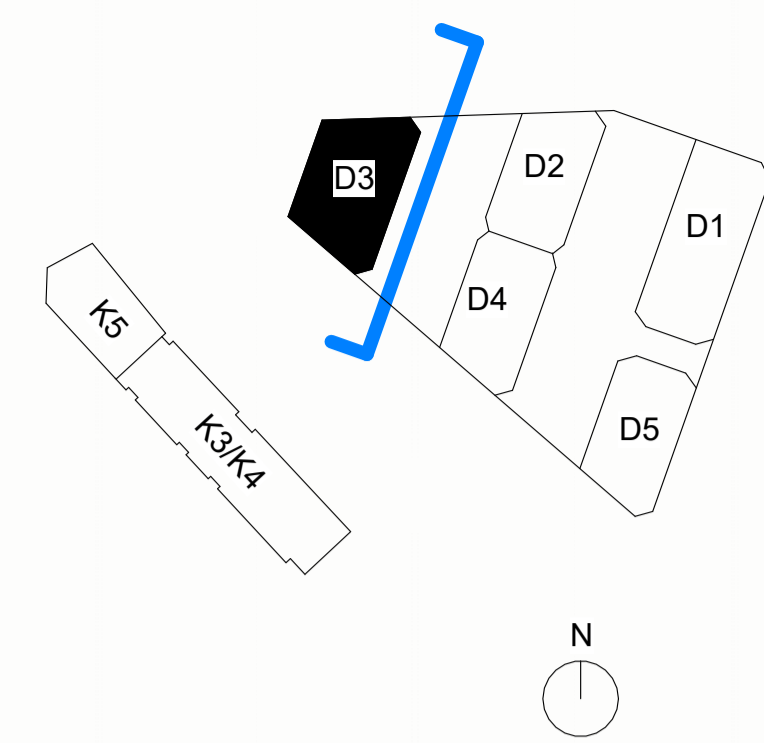
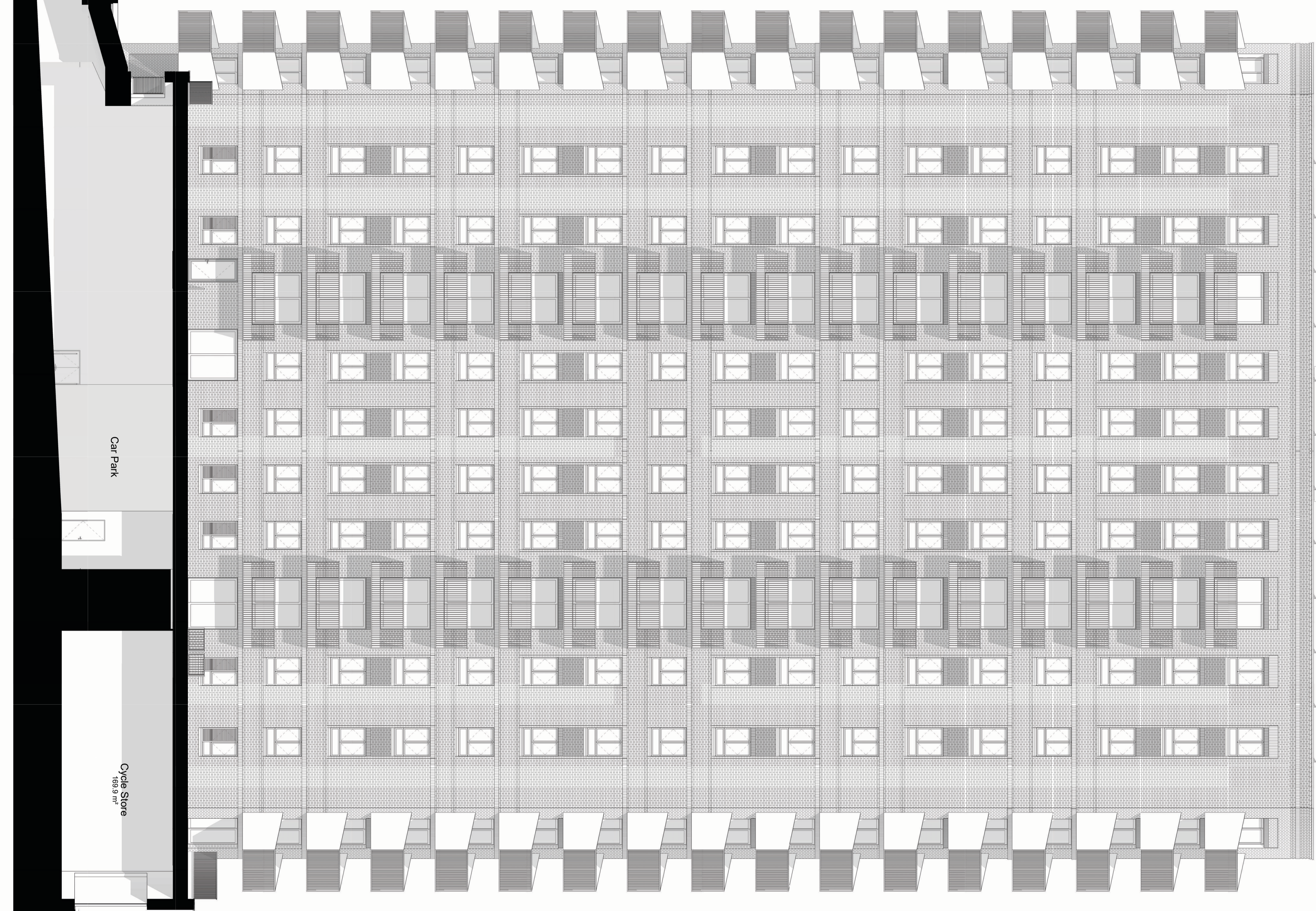


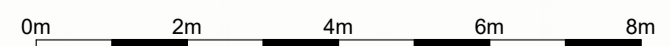
Park



- DD03-L19-FFL 69295
- DD03-L17-FFL 62325
- DD03-L16-FFL 59250
- DD03-L15-FFL 56175
- DD03-L14-FFL 53100
- DD03-L13-FFL 50025
- DD03-L12-FFL 46950
- DD03-L11-FFL 43875
- DD03-L10-FFL 40800
- DD03-L09-FFL 37725
- DD03-L08-FFL 34650
- DD03-L07-FFL 31575
- DD03-L06-FFL 28500
- DD03-L05-FFL 25425
- DD03-L04-FFL 22350
- DD03-L03-FFL 19275
- DD03-L02-FFL 16200
- DD03-L01-FFL 13125



Duke of Wellington Avenue



CDM REGULATIONS 2015. All current drawings and specifications for the project must be read in conjunction with the Designer's Hazard and Environment Assessment Record. All intellectual property rights reserved.

Site levels, topography and setting out based on surveys, information and reports listed:
 Ordnance survey dated 2022 Licence no. 100022432
 PLOWMAN Craven survey No. 47440-PCL-TO-XX-DR-Y-00002 REV P02 dated July 2022

Lines shown within plots are indicative only.
 Lift motor rooms, plant, plan acoustics surrounds and flue extracts will not exceed three meters in height above indicated AOD.
 Top parapet levels will not exceed 2m above indicated AOD with a construction tolerance of +/- one meter

Rev	Date	Description
P00	2024-03	Issued for Planning

Dwn	Ckd	Drawn	AV
AV	CF	Checked	CF
		Date	2023-12-19
		Scale @ A1	1 : 100

BA10030 RAR D&K Blocks
 Proposed Building D3 South East Elevation

Z429- PRP01- D3- ZZ- DR- A-880-382
 REV P00
 FOR PLANNING

