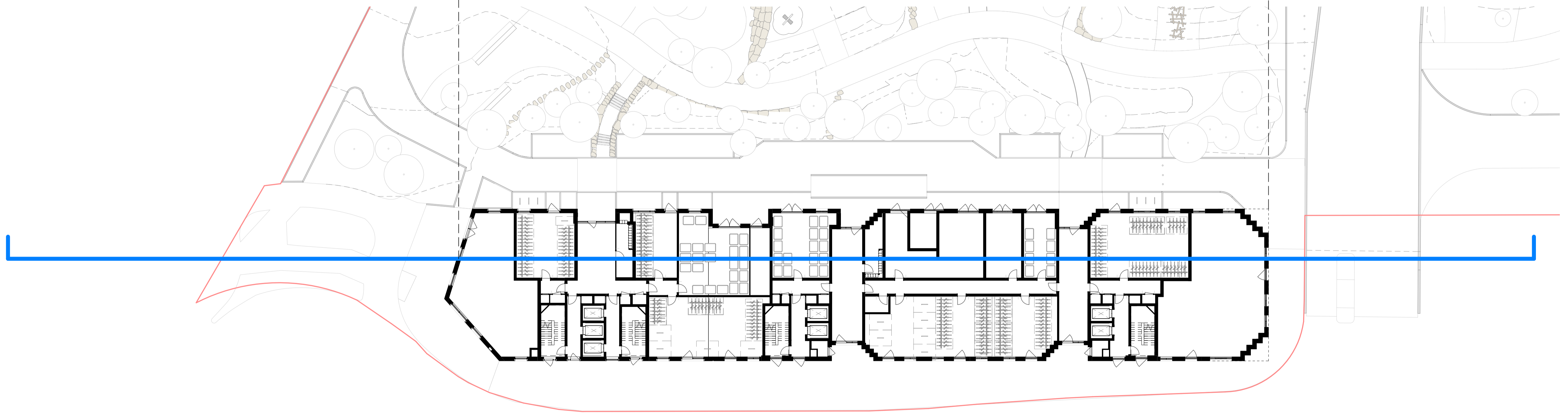
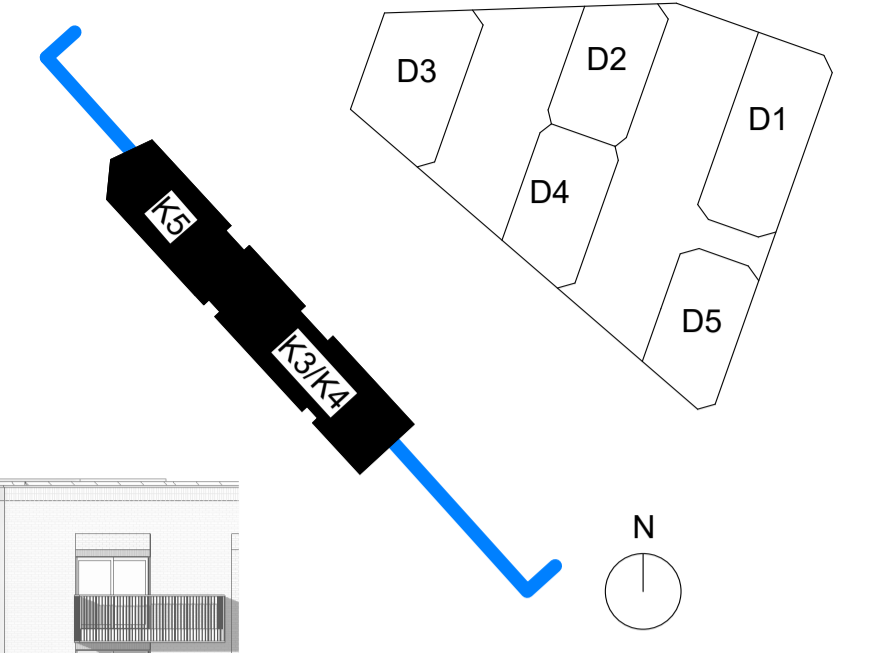


- ▼ KZZ-LRF-FFL  
57300
- ▼ KZZ-L17-FFL  
53700
- ▼ KZZ-L16-FFL  
50625
- ▼ KZZ-L15-FFL  
47550
- ▼ KZZ-L14-FFL  
44475
- ▼ KZZ-L13-FFL  
41400
- ▼ KZZ-L12-FFL  
38325
- ▼ KZZ-L11-FFL  
35250
- ▼ KZZ-L10  
32175
- ▼ KZZ-L09-FFL  
29100
- ▼ KZZ-L08-FFL  
26025
- ▼ KZZ-L07-FFL  
22950
- ▼ KZZ-L06-FFL  
19875
- ▼ KZZ-L05-FFL  
16800
- ▼ KZZ-L04-FFL  
13725
- ▼ KZZ-L03-FFL  
10650
- ▼ KZZ-L02-FFL  
7575
- ▼ KZZ-L01-FFL  
4500
- ▼ KZZ-L00-FFL  
0



— Site Boundary  
— Section Line



CDM REGULATIONS 2015. All current drawings and specifications for the project must be read in conjunction with the Designer's Hazard and Environment Assessment Record. All intellectual property rights reserved.

Site levels, topography and setting out based on surveys, information and reports listed:  
Ordnance survey dated 2022 Licence no. 100022432  
Plowman Craven survey No. 47440-PCL-TO-XX-DR-Y-00002 REV P02 dated July 2022

Lines shown within plots are indicative only.  
Lift motor rooms, plant, plan acoustics surrounds and flue extracts will not exceed three meters in height above indicated AOD.  
Top parapet levels will not exceed 2m above indicated AOD with a construction tolerance of +/- one meter

Rev	Date	Description
P00	2024-03	Issued for Planning

Dwn	Ckd	Drawn	NS
JJ	CF	Checked	CF
		Date	2023-12-19
		Scale @ A1	1 : 250

**BA10030 RAR D&K Blocks**  
Proposed Plot K Section 1

**Z429- PRP01- KZ- ZZ- DR- A-880-044**  
REV P00  
FOR PLANNING

