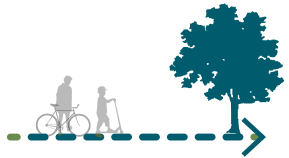


Design Principles



Placemaking

- Create a destination that celebrates and reveals the rich, site-specific history



Biodiversity

- Maximise biodiversity and make space for nature
- Improve climate resilience



Tree planting

- Increase tree canopy cover
- Consider resilient species to mitigate climate change and disease



Play

- Create an engaging environment that encourages a range of activities and play opportunities
- Create destination play spaces that integrate into the landscape features



SuDS

- Replace the formal water feature with natural features
- Introduce above ground attenuation features to support sustainable water management



Park Concept Plan

Green and Blue Infrastructure

The adjacent diagram summarises the Green and Blue Infrastructure strategy for the site.

Maribor Park provides a green spine for the development. It is a large public open space for the wider community which links The Source and The Delta to the river. The park and green streets create a framework of accessible links throughout the site and support the wider green infrastructure network in the area.

A green street with trees and low level planting wraps around Plot D, linking the park with the surrounding pockets of green through a more urban treatment.

The network of blue infrastructure consists of a series of dry swales that have the capacity to seasonally attenuate surface water run off. The material excavated to create the swales has been repurposed to create mounding, providing interesting, elevated landscapes and attractive play spaces utilising the escarpments and site level conditions.

Additionally, water will be attenuated within the permeable paving, which will be interlinked with the swale system. The swales will be designed as seasonally wet species-rich grassland areas, improving biodiversity and adding to the experience of park users.



Access and Movement

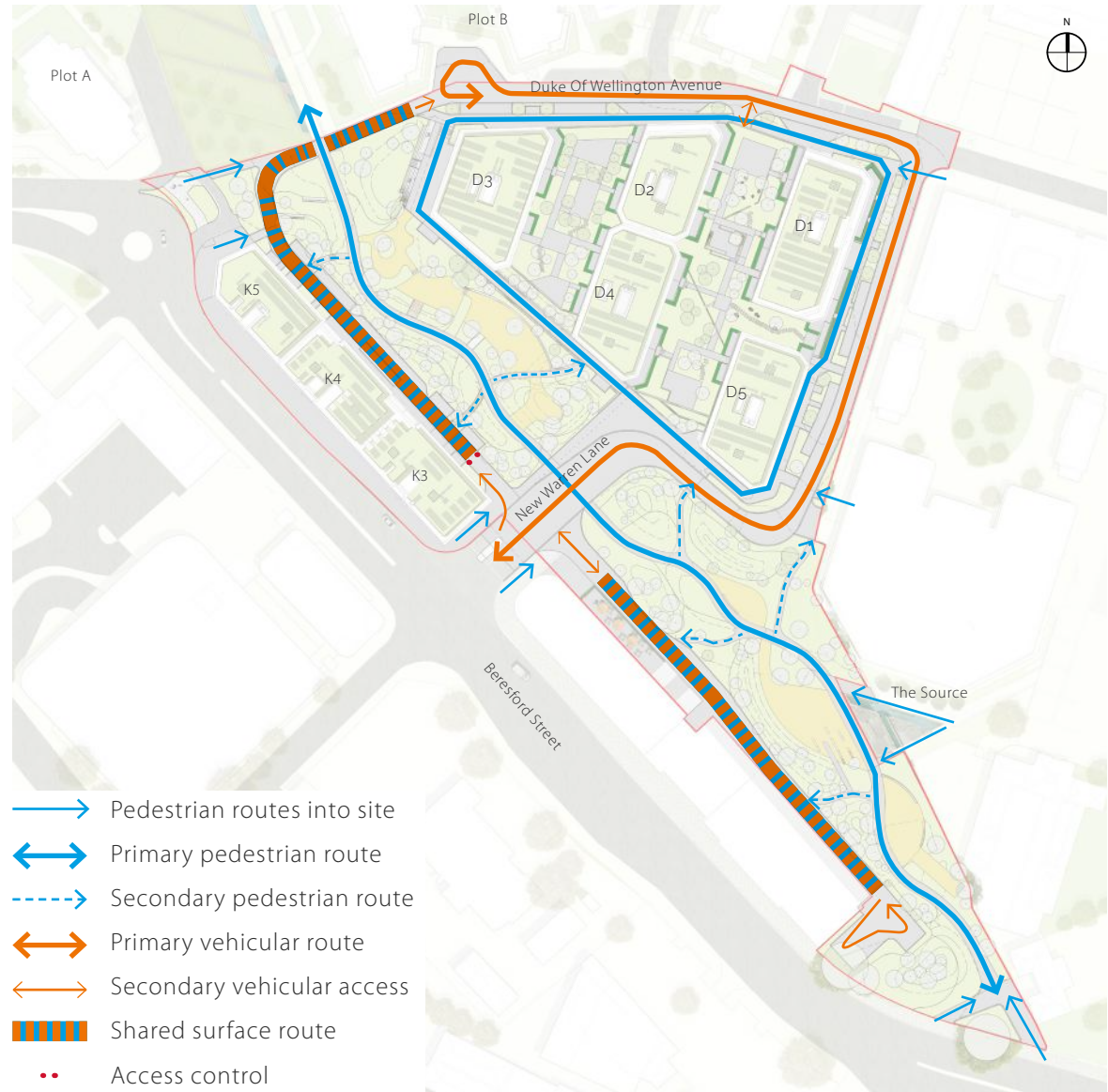
Key pedestrian and vehicular routes

The Plots D & K are located within an existing network of pedestrian and vehicular routes.

The design provides a permeable public space, with multiple connections to the surrounding pedestrian network. A new pedestrian and cycle route is proposed through Maribor Park, which opens a link from Woolwich Town Centre all the way to the river. This route provides connections through the site into the residential cores and new commercial units within Plots D and K.

The design proposal looks to retain the New Warren Lane vehicular access into the site off Beresford Street. The road then continues to Duke of Wellington Avenue, which provides access for buildings B, C and into the Plot D undercroft / semi basement.

In addition to these vehicular routes, a new shared route for both pedestrian and vehicular movement is proposed along the Plot K, existing hotel and future development along Beresford Street. These routes provide controlled access for emergency vehicles and servicing of the buildings. They are designed as shared surfaces, promoting pedestrian priority.



At grade parking layout and vehicular access along the Park

- 15no accessible bays provided at grade (5no adjacent to Plot K and 10no in Duke of Wellington Avenue and New Warren Lane)
- 3no loading bays provided for Plot D, 1no loading bay provided for Plot K
- A controlled access vehicular route to service Plot K runs along the building with egress onto Duke of Wellington Avenue
- A controlled access for servicing the Hotel is provided off New Warren Lane as a shared surface route with vehicular turning adjacent to the Catholic Club building
- Shrub planting and mounding provides screening for the turning head from Beresford Street, Park entrance and the Park



- | | | | |
|---|-------------------------|---|--------------------------------|
|  | Accessible parking bays |  | Lobby entrance |
|  | Loading bays |  | Commercial entrance |
|  | Vehicular movement |  | Undercroft / Basement entrance |

Open Space Provision

The diagram on the next page illustrates the distribution of the different types of open spaces with the masterplan.

Publicly accessible amenity space

The scheme focuses on a new park at the heart of the site. It creates a local destination greenspace within the development and stitches together Woolwich Town Centre, Woolwich Arsenal and the Thames. Play is a fundamental feature in Maribor Park. The proposals offer a wide and varied range of experiences for different age groups of children, alongside a recreational provision for older generations. The rich topography of the park creates a unique landscape referencing the history of the site, providing a changing user experience as visitors navigate through. The topography also creates varied habitat opportunities and natural surface water attenuation features.

Other publicly accessible spaces

The other space which adds to the public realm is the residential street. It provides trees and planting opportunities to create a high quality, pedestrian environment while it's also supporting urban greening and biodiversity enhancements. Where possible, rain gardens will be installed as part of the wider SuDS strategy.

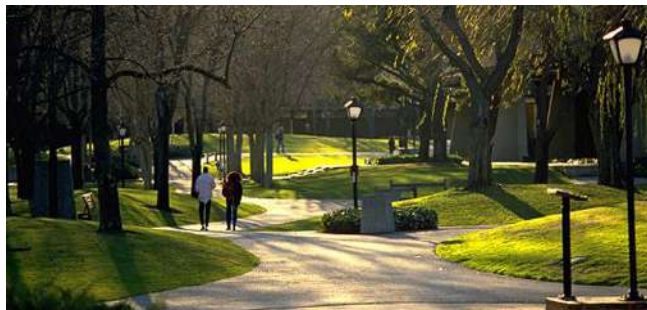
Private / resident amenity space (podium level)

The podiums offer residents a connection to green spaces with direct access from the apartments at the podium levels or via communal access points. Play spaces run through the central areas to ensure they are accessible for all and suitably situated away from residential windows, surrounded by a rich tapestry of planting adding to the play value through sensory experience for the children. The planting ensures year round interest and contributes to habitat creation for wildlife.

Private amenity for ground floor homes

Five residential units are located in the ground floor of D1. These homes benefit from private terraces fronting onto the street. The outdoor spaces are separated from the public footway by a railing and hedge, which provide a safe and green enclosure. The trees and planting within the streetscape provide a green outlook for these homes.

- Publicly accessible amenity space
- Other publicly accessible spaces
- Private / resident amenity space (podium level)
- Private amenity for ground floor homes



6.3 LANDSCAPE CHARACTER AREAS

Maribor Park

Maribor Park is a fantastic asset for The Ropeyards. Covering approximately 2.1 acres the park is a dynamic green space at the heart of the development offering a range of recreation opportunities and space to reconnect with nature for new residents of Plots D and K and the surrounding community.

Maribor Park creates a local destination greenspace within the development and stitches together the already implemented Source and Delta, opening up a new green link from Woolwich Town Centre to the Thames.

Play is a fundamental feature in the park. The play proposals offer a wide and varied range of experiences for different age groups of children, alongside recreational provision for older generations.

The topography of the park creates a unique landscape which relates to the geological and historical themes of the site's previous uses, transitioning from open terraces to the north to playful landforms in the south. Dry swales support the site's water management strategy, providing attenuation for surface water run off, creating seasonal shallow bodies of water. This adds to the park experience, improves biodiversity and supports sustainable urban drainage.

As a whole, Maribor Park provides a range of complementary habitats with diverse planting combinations that knit together creating a striking landscape. The planting strategy provides year round interest for visitors to enjoy, whilst maximising the benefits for wildlife. Planting typologies are developed in response to topography and visual links.

There are four distinct character areas within the park: Lower Terraces, Play Outcrops, The Plateau and The Uplands. The coming pages provide more detail for each of these.



Maribor Park - Lower Terraces

The Lower Terraces are the area of the park located at the northern end. They open up onto the existing landscape of The Delta and provide a clear view of the Thames. Seating edges on a shallow sloping bank offer opportunities to enjoy the long vistas. An outdoor terrace for a café located within the ground floor of D3 provides opportunities for al fresco seating and dining. The landscape area directly adjacent to the terraces is a flexible amenity lawn area, which provides seasonal attenuation as parts of the site wide SUDs strategy. It is also seen as an informal play space or relaxation area. Seating steps along the terrace edge provide an amphitheatre like setting, utilising the level change as an opportunity for informal socialising.



1. Outdoor terrace
2. Seating edge
3. Seasonal attenuation
4. Seating on slope
5. Shared surface

Maribor Park - Play Outcrops

The play outcrops are the area of the park which runs in between Plots D & K. The topography is more open in character, creating larger amenity areas and pockets of play terraces which work with the site levels. The edges of the play terraces are defined by escarpments formed of flat top boulders, providing additional play opportunities as children move through the play spaces. A dry swale is introduced along the main footpath. This, not only forms an attenuation basin for seasonal water storage, but provides a play feature which links the terraces. The landscape along Plot K raises up, creating a shallow embankment between the park main path and the shared surface along the buildings, providing a green edge and visual buffer between the park and the buildings.

The park borders New Warren Lane, which is the site access form Beresford Street. The play areas are separated from the road by a planted mound and the play provision is arranged in a way that ensures children are safeguarded from the vehicular traffic. Where the main path crosses the road a raised table is introduced to slow vehicles down and emphasize pedestrian priority.



1. Rock escarpment
2. Play terrace
3. Play mound with slide and planting
4. Dry swale
5. Mounding
6. Raised crossing



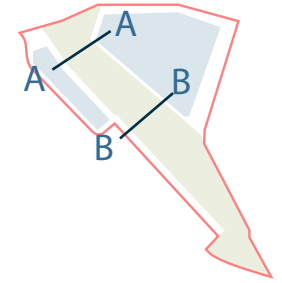
Maribor Park - Lower Terraces

View of Maribor Park looking south

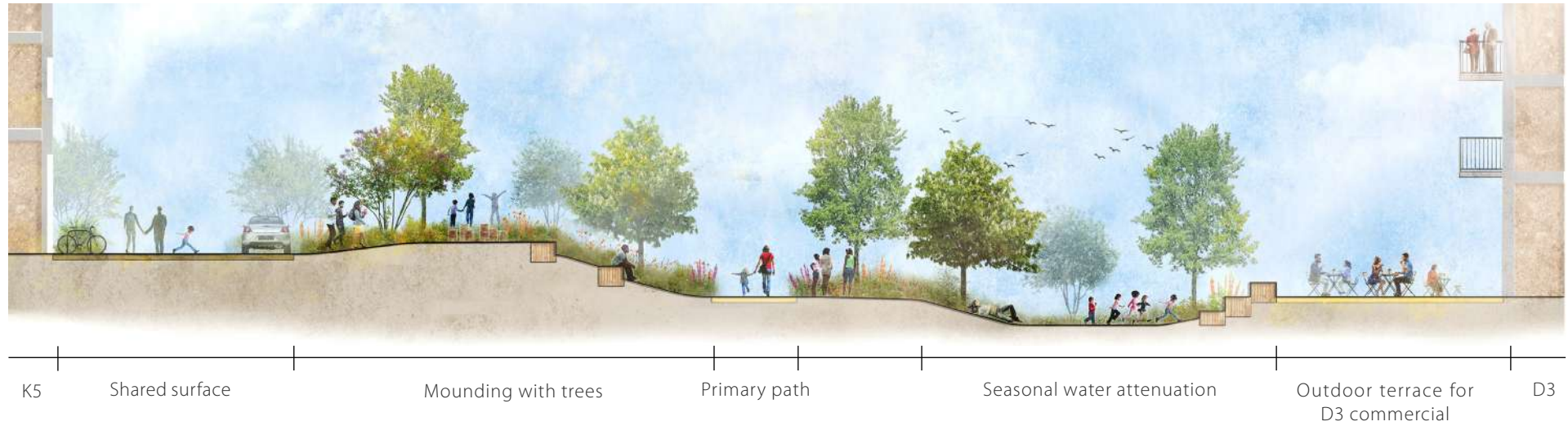


Buildings are shown indicatively for scale and illustrative purposes only

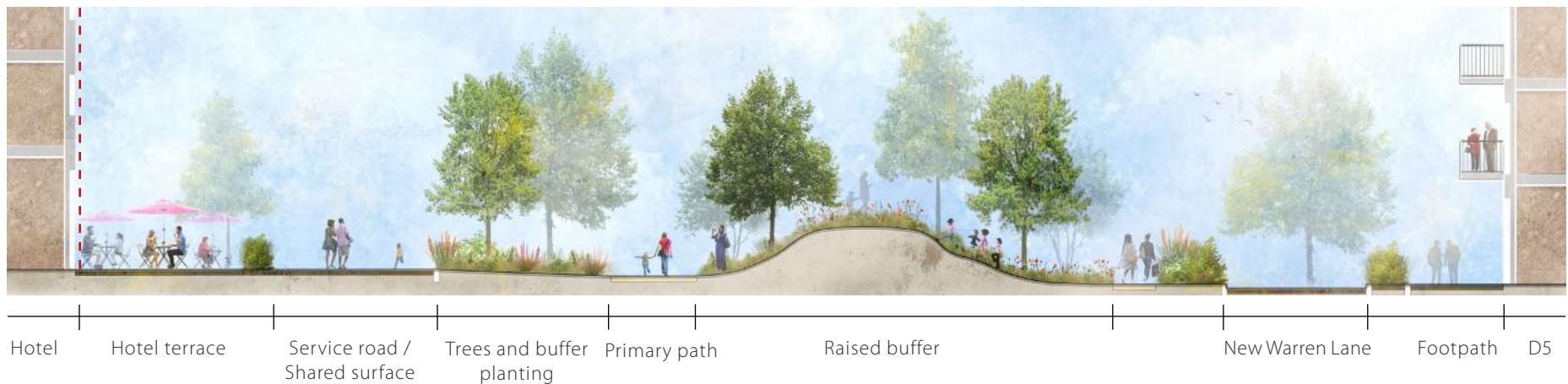
Maribor Park Sections



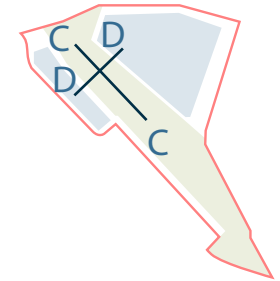
Section AA



Section BB



Maribor Park Sections



Section CC



Rock escarpment and planting

Play terrace

Play terrace

Secondary path

Mounding and copse tree planting

Footpath

New Warren Lane



Entrance K4

Shared surface

Planted slope

Primary path

Dry swale

Play terrace

Planting

Footpath

Plot D

Maribor Park - The Plateau

The Plateau is an area in the park which links to the historic elements of the site, creating a distinctive character for the play areas and communal spaces. The spaces are embedded into the topography, surrounded by planted edges and escarpment walls, both of which provide playable value and protection from New Warren Lane.

The younger age group play opens directly onto The Source, bringing its language into the space and linking them together. The direct connection with the historic Royal Arsenal makes The Plateau a key arrival space within the park, where the journey starts for those coming from Dial Arch Square and No 1 Street. Planting characters are developed to enhance this journey, alongside references to the site history.



1. 0-4 play area
2. 5-11 play area
3. 12+ play area
4. Planted edges
5. Rock escarpments
6. Mounding and copse
7. Amenity lawn
8. Shared surface
9. Raised crossing



Maribor Park - The Uplands

The Uplands are the gateway to the park from Woolwich Town Centre off Beresford Street. The main entrance sits on the side of the Royal Arsenal historic wall and the Guard House building, both of which provide a strong statement.

The Gateway looks to create a sense of a grand arrival space with entry signage, feature lighting and seating, where the past of Royal Arsenal and the park come together. It is a space which connects areas on both sides of the wall. Being the main access route into the park, it responds predominantly to the park narrative. The landscape immediately takes precedence, with the topography forming a backdrop to the space and the main path, inviting users into the park.

Mounding and planting enhance visual connectivity through the park, screening and safeguarding direct connections with the shared surface along the western edge.

A play space dedicated to 12+ play and activities for older age groups is the first space linking with The Plateau and The Source.



1. Royal Arsenal wall
2. 12+ play and elderly activities provision
3. Mounding and copse
4. Maintain link to Guard House
5. Existing trees
6. Shared surface
7. Turning zone



Maribor Park - The Uplands

View of Maribor Park looking north



Buildings are shown indicatively for scale and illustrative purposes only

Maribor Park - The Uplands

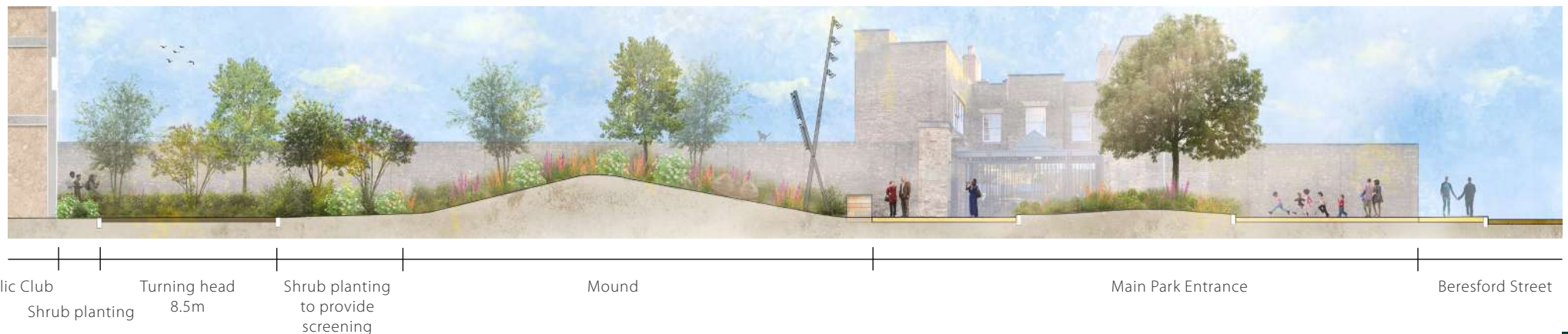
Landscape elements to emphasise the Main Park Entrance

The Main Entrance is the key arrival space from Woolwich Town Centre and is a gateway for the park. The below design elements are proposed to make a statement:

1. Signage - interesting entrance feature, potential to include a map of the park and indication of the different areas
2. Lighting - feature lighting proposed to highlight the access to the park
3. Seating - elegant and robust seating proposed within the space
4. Paving finishes - paving pattern and material to be chosen to create inviting entrance plaza



Section A



Maribor Park - The Uplands

View of Main Park Entrance



Buildings are shown indicatively for scale and illustrative purposes only

Streetscape

The streets to the east and north of Plot D provide access to Royal Arsenal Riverside off Beresford Street. These are the existing New Warren Lane and Duke of Wellington Avenue, both of which will remain in place. A revised on-street parking provision is proposed, which provides 10 no accessible bays for residents of the D buildings.

The parking arrangement allows for the introduction of street trees and low level planting between and along the bays. This softens the streetscape and provides a leafy pedestrian environment. 3m wide pavements run along the building façade. They are segregated from the road by a planted verge, where possible, creating a safe walking route.

Where residential units are located in the ground floor of Building D1, the footway narrows to 2m to allow for hedge planting in front of the private terraces.

All footways are designed to compliant falls and cross falls, providing accessible links for the development.



Streetscape

The section below illustrates the street environment along Building D1 ground floor homes.

Section A



Building D1 Ground floor flats



Streetscape

View of corner of Building D1



Buildings are shown indicatively for scale and illustrative purposes only

Podium Gardens

Design Principles

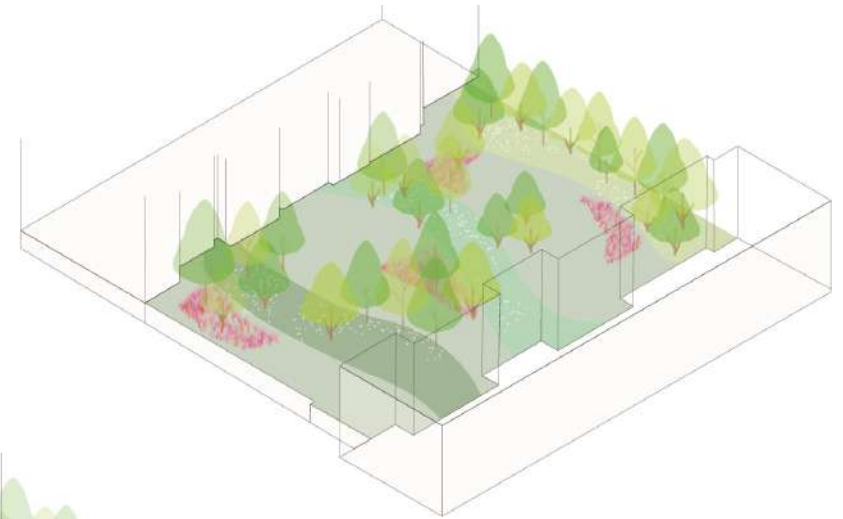
The design approach to the podium gardens builds upon the concept of a Biophilic courtyard that enhances the residents experience and contributes to a sense of community.

The proposals seek to maximise the quantum of green space to provide a verdant garden that is biodiverse and includes pockets of play space and communal amenity for residents only.

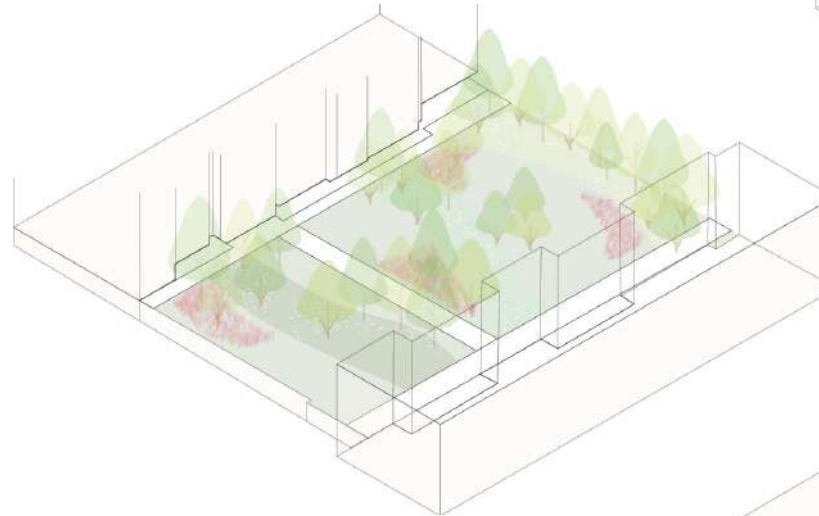
The strategy works with the inherent conditions of a landscape over slab by using a prairie/steppe character that is low water demanding, tolerates exposure and is low in maintenance.



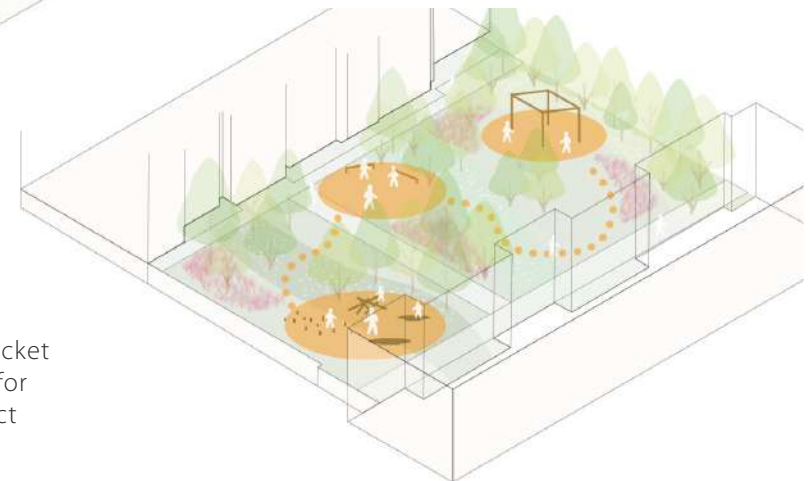
1. Green: Begin with a fully planted verdant garden



2. Movement: Overlay the necessary path network to the entrances and private terraces



3. Interact: Carve a series of pocket spaces through the landscape for residents to explore and interact



Podium Gardens

Design Principles

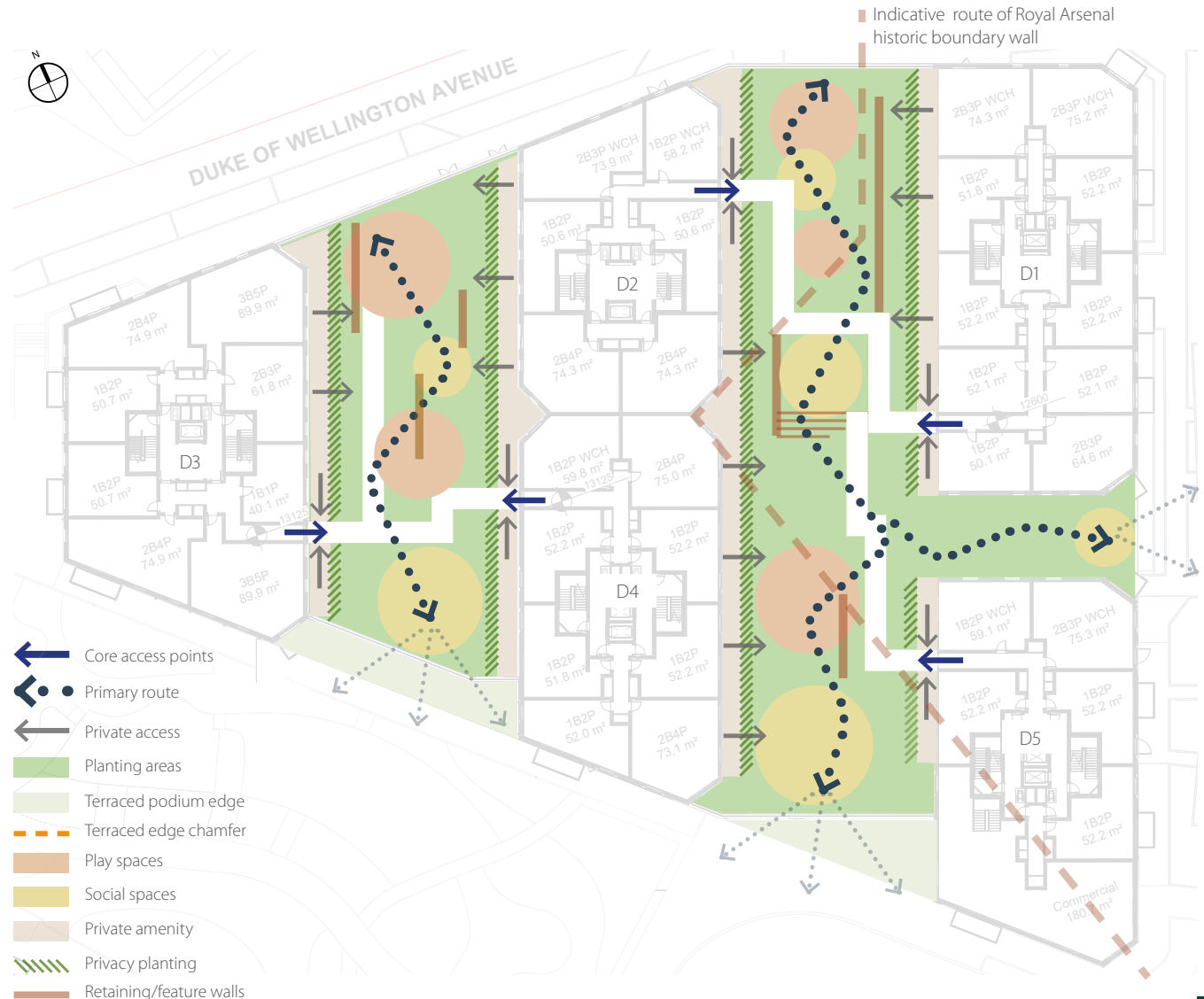
The Plot D buildings benefit from communal podium gardens located at level 1. The scheme aims for the podiums to be verdant landscape environments, minimising the paved areas, with a targeting a 60/40% of soft to hard.

The proposal is to create a meadow type landscape across the courtyards, that will provide year round interest and significant biodiversity enhancements.

Play space has been focused in the centre of the gardens and is accessible for all residents of the buildings that have core access into the gardens. Hedge and shrub planting provides a buffer to the private terraces. The gardens also include pockets of seating areas for residents to enjoy the space, relax and socialise. Gentle mounding encompasses play pockets and creates playful journeys through the courtyards, adding to the amenity value of these spaces.

The podium apartments also benefit from direct access into the garden spaces directly from their private terraces.

Buildings D3 and D4 share a podium garden. The courtyard for Buildings D1, D2, D4 and D5 is split over two levels due to the different floor finish levels of the southernmost blocks. A seamless transition via 1:21 slopes and steps creates a central seating area and allows residents to move through the space despite the level differences.

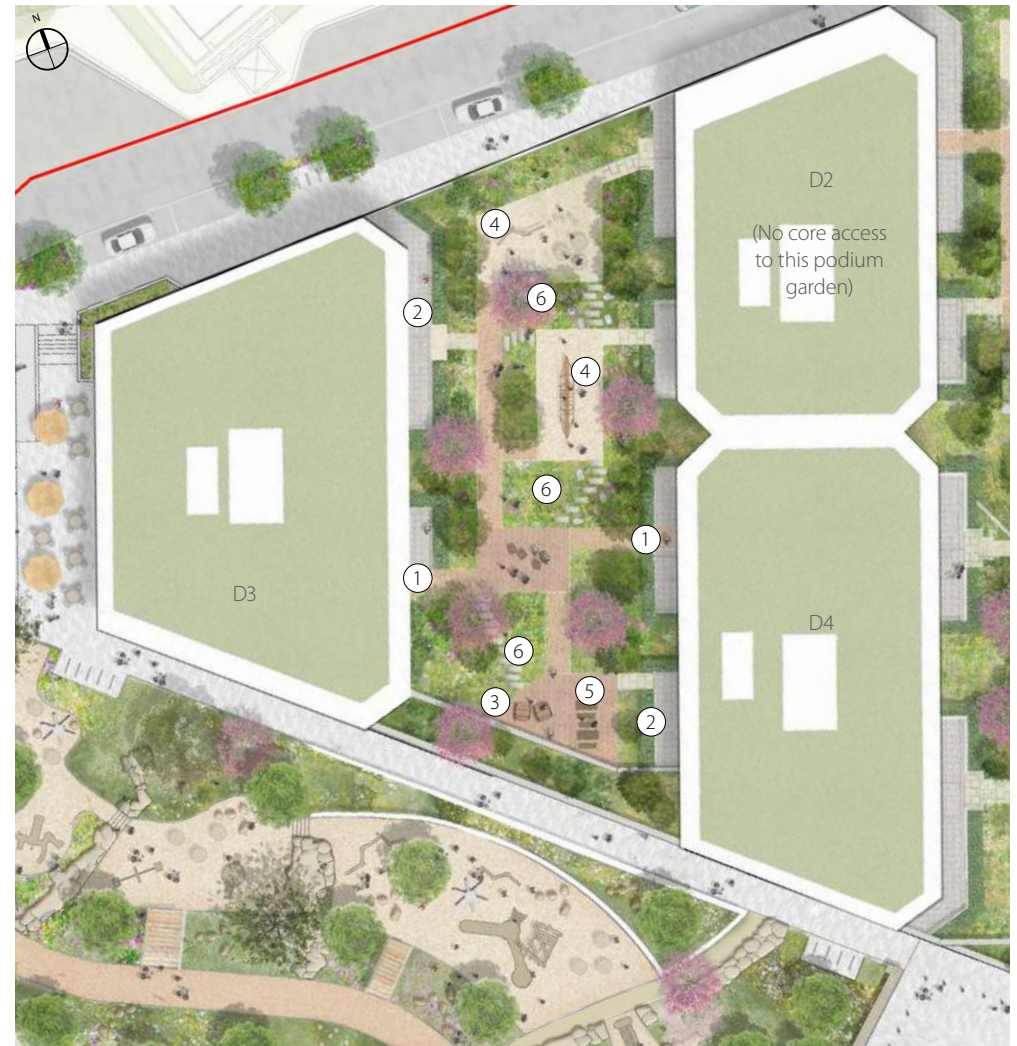


Podium Gardens

Podium Garden D3 and D4 Design Proposal

The below summarises how the design principles were applied to the podium layout.

- Activity and play spaces kept centrally
- Planted edges separate private amenity spaces from central active spaces
- Views out to park celebrated
- Informal play routes through planting areas to maximise playability
- Secondary seating areas framed with planting



- Key
1. Core entrance
 2. Private entrance
 3. Seating area
 4. Play area
 5. Picnic tables
 6. Stepping stones

Podium Gardens

View within Podium Garden D3 and D4



Buildings are shown indicatively for scale and illustrative purposes only

Podium Gardens

Podium Garden D1, D2 and D5 Design Proposal

The below summarises how the design principles were applied to the podium layout. Activity and play spaces kept centrally

- Playable seating wall elements link to historic Royal Arsenal wall line
- Planted edges separate private amenity spaces from central active spaces
- Tiered platforms address level change playfully
- Views out to park celebrated
- Informal play routes through planting areas to maximise playability
- Secondary seating areas framed with planting



Key

1. Core entrance
2. Private entrance
3. Ramp
4. Seating and steps
5. Seating area
6. Play area
7. Picnic tables
8. Stepping stones
9. Playable walls

Podium Gardens

View within Podium Garden D1, D2 and D5

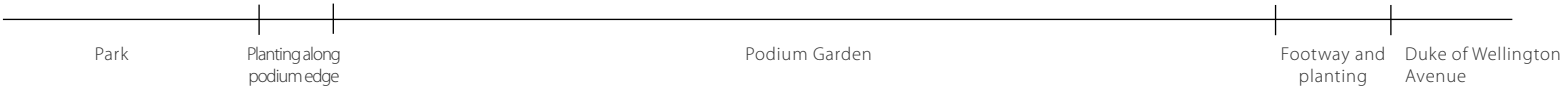


Buildings are shown indicatively for scale and illustrative purposes only

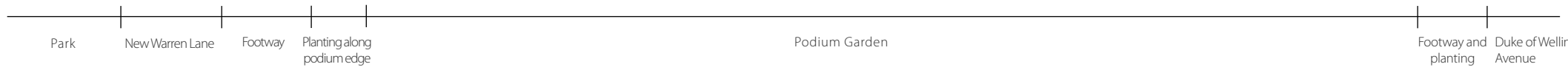
Podium Gardens Sections



Section A



Section B



Podium Gardens

View along Park and Podium Edge looking towards Building D3



Buildings are shown indicatively for scale and illustrative purposes only

6.4 LANDSCAPE STRATEGIES

Urban Greening Factor (UGF)

GLA Policy G5 Urban Greening requires new major development proposals to contribute to the greening of London by including:

- high quality landscaping (including trees)
- green roofs
- green walls
- nature-based sustainable drainage

The UGF for the scheme has been assessed on the guidance set out in “Urban Greening Factor (UGF) guidance pre-consultation draft”. Date published: 19 March 2021. Overall, the general principles for the design of the scheme include a diverse tapestry of habitats, including trees and herbaceous planting and vegetated swales in the public realm, a mosaic of verdant courtyards and green roofs. Highest scoring green spaces have been optimised as far as possible.

The adjacent table gives a summary of the calculation and diagram shows the allocation of the greening across the masterplan. The overall UGF score of 0.4 is in line with the Mayor’s recommended target score for predominantly residential developments.



UGF calculation

Surface Cover Type	Factor	Area proposed (sqm)	Urban Greening Factor
Semi-natural vegetation (e.g. woodland, flower-rich grassland) created on site.	1	0	0
Wetland or open water (semi-natural; not chlorinated) created on site.	1	0	0
Intensive green roof or vegetation over structure. Vegetated sections only. Substrate minimum settled depth of 150mm – see livingroofs.org for descriptionsA.	0.8	1449.3	1159.44
Standard trees planted in natural soils or in connected tree pits with a minimum soil volume equivalent to at least two thirds of the projected canopy area of the mature tree – see Trees in Hard Landscapes for overviewB.	0.8	2605.5	2084.4
Extensive green roof with substrate of minimum settled depth of 80mm (or 60mm beneath vegetation blanket) – meets the requirements of GRO Code 2014C.	0.7	3170	2219
Flower-rich perennial planting – see Centre for Designed Ecology for case-studiesD.	0.7	2563	1794.1
Rain gardens and other vegetated sustainable drainage elements – See CIRIA for case-studiesE.	0.7	942.31	659.617
Hedges (line of mature shrubs one or two shrubs wide) – see RHS for guidanceF.	0.6	178.9	107.34
Standard trees planted in pits with soil volumes less than two thirds of the projected canopy area of the mature tree.	0.6	715.5	429.3
Green wall –modular system or climbers rooted in soil – see NBS Guide to Façade Greening for overviewG.	0.6	0	0
Groundcover planting – see RHS Groundcover Plants for overviewH.	0.5	1867	933.5
Amenity grassland (species-poor, regularly mown lawn).	0.4	774.6	309.84
Extensive green roof of sedum mat or other lightweight systems that do not meet GRO Code 2014I.	0.3	0	0
Water features (chlorinated) or unplanted detention basins.	0.2	0	0
Permeable paving - see CIRIA for overviewJ.	0.1	5682	568.2
Sealed surfaces (e.g. concrete, asphalt, waterproofing, stone).	0	0	0
Site Average Urban Greening Factor*			0.4

Trees

Trees within the public realm and on podiums

Trees play a vital role in the design of the masterplan, providing structure, design features, improving the microclimate and enhancing ecology.

The following objectives apply:

- The trees have a high proportion of native species
- The trees have a diverse range of species to improve resilience to disease and create a wider range of habitat types
- A variety of sizes are used to ensure instant impact in key areas by planting larger specimens whilst groups of smaller trees are planted in naturalised spaces in the park that can mature over time.

The tree planting is categorised into character groups as follows:

Street trees

Regularly sized trees with compact crowns are proposed throughout the streets rhythmically as a green backbone and to provide shade, continuous green infrastructure, and a pleasant pedestrian environment.

Park trees

Proposed trees work with the park's habitats and seek to link with existing canopies to create ecological corridors. Species have been selected with climate change and resilience in mind to establish and support tree establishment within the park.

Play area trees

The play area trees contain a mixture of light canopied smaller multistem trees, and a few larger specimens. The aim is to provide some shade for play whilst allowing the verdant underplanting to thrive

Podium garden trees

The trees for the communal gardens have been selected for their amenity value and ultimate size, with a variety of multi-stemmed and highly ornamental trees.

New trees will have the following characteristics:

- Climate resilient species: medium to large trees selected to combat pests, diseases and changing climatic conditions.
- Street Trees: Medium to large trees with a narrow canopy, selected to provide structure and scale. Clear stem: 2.5m.
- Communal Gardens: Small to medium scale ornamental trees selected for seasonality, colour, leaf and light canopies.
- Parkland Edge Trees: Large to medium scale trees selected for scale and seasonal interest.
- Parkland and Play Area Trees: Large to medium scale tree selection to complement the existing mature tree framework within less specialised habitats in the park.



Trees



Tree types

- Street trees
- Parkland trees
- Parkland & Play Trees (north)
- Parkland & Play Trees (south)
- Ornamental Trees to Podium Gardens
- Existing trees retained

Trees

Proposed Trees - Indicative selection

Street Trees



Ulmus 'New Horizon'



Liquidambar styraciflua

Parkland Trees



Acer campestre



Prunus avium



Corylus avellana



Crataegus monogyna

Parkland Trees



Quercus robur



Tilia platyphyllos

Parkland & Play Trees (north)



Alnus glutinosa



Corylus avellana 'Contorta'



Koelreuteria paniculata



Sorbus torminalis

Trees

Proposed Trees - Indicative selection

Parkland & Play Trees (south)



Acer opalus



Cornus mas



Corylus avellana 'Contorta'



Zelkova serrata

Ornamental Trees to Podium Gardens



Amelanchier x lamarckii



Cornus controversa



Parrotia persica



Prunus incisa 'The Bride'

Planting and Ecology

The planting strategy for Maribor Park focuses on the creation of natural habitats and uses a number of native plant species.

The plant selection is developed to fit the pressures of the residential environment by introducing more evergreen and long flowering plants with a 'tidier' appearance. This more horticultural and ornamental plant selection still aims to provide nectar, fruit and nesting opportunities for the local wildlife whilst ensuring an attractive, evergreen appearance throughout the seasons.

All planting proposals are committed to improving and enhancing the ecological value of the development, both to promote biodiversity and to provide amenity value. Flowering and fruiting plants will be selected to attract invertebrates and in particular pollinators, as well as birds.

The proposals set the ground for a rich mosaic of habitats to proliferate.

A habitat mosaic is defined as an area where a range of contiguous plant communities occur in transition with one another. The design of Maribor Park makes it possible to introduce a range of habitats including:

- Species rich grasslands and flower meadows
- Swale planting
- Pockets of woodland and woodland understorey
- Areas of shrub and perennial planting
- Mixed species hedgerows

The different semi natural habitats will be connected to form a strong ecological network creating corridors for wildlife and humans through the site.



Planting and Ecology



Habitat Types Park and Public Realm

- Shrub and perennial planting
- Woodland understory planting
- Swale planting
- Wildflower meadow planting
- Native shrub mix
- Species rich amenity lawn
- Hedge planting

Habitat Types Po and Roofs

- Shrub planting
- Ornamental grass planting
- Groundcover planting
- Hedge planting
- Biodiverse roof

Planting and Ecology

Shrub and Perennial planting Sunny Mix - Indicative selection

- Smokebush (*Cotinus coggygria* 'Young Lady')
- Black Chokeberry (*Aronia melanocarpa*)
- Autumn Moor Grass (*Sesleria* 'Summer Skies')
- Tukauki (*Libertia grandiflora*)
- Coneflower (*Echinacea pallida*)
- Sage (*Salvia* 'Amistad')
- Allium sphaerocephalon
- Cyclamen hederifolium
- Guelder Rose (*Viburnum opulus*)
- Siberian Dogwood (*Cornus alba* 'Sibirica')
- Witch Hazel 'Aphrodite' (*Hamamelis* × *intermedia* 'Aphrodite')

Ornamental Planting - Sunny Mix



Aronia melanocarpa



Cotinus 'Young Lady'



Sesleria 'Summer Skies'



Echinacea pallida



Allium sphaerocephalon



Viburnum opulus



Libertia grandiflora



Salvia 'Amistad'

Planting and Ecology

Shrub and Perennial planting Semi-shade Mix - Indicative selection

- Viburnum (*Viburnum davidii*)
- Which hazel (*Hamamelis x intermedia*)
- Nest Moor Grass (*Sesleria nitida*)
- Japanese anemone (*Anemone x hybrida* 'Honorine Jobert')
- Dusky cranesbill (*Geranium phaeum*)
- White Wood Aster (*Eurybia divaricata*)
- Soft shield fern (*Polystichum setiferum*)
- Daffodil (*Narcissus* 'Thalia')
- Tukaui (*Libertia grandiflora*)
- Siberian Dogwood (*Cornus alba* 'Sibirica')
- Japanese snowball (*Viburnum plicatum* f. *tomentosum* 'Mariesii')

Hedge planting:

- Yew (*Taxus baccata*)
- Garden Privet (*Ligustrum ovalifolium*)

Ornamental Planting - Semi-shade Mix



Sarcococca var. *humilis*



Anemone Honorine Jobert



Sesleria nitida



Polystichum setiferum

Ornamental Planting - Hedge



Geranium phaeum



Viburnum davidii



Taxus baccata



Ligustrum ovalifolium

Planting and Ecology

Shrub and Perennial planting Podiums - Indicative selection

- Abelia (Abelia 'Edward Goucher')
- Californian lilac (Ceanothus x delileanus)
- Japanese Mock Orange (Pittosporum tobira 'Nanum')
- Mock Orange (Philadelphus 'Belle Etoile')
- Tufted Hair Grass (Deschampsia cespitosa 'Goldtau')
- Tukauki (Libertia grandiflora)
- Catmint (Nepeta racemosa 'Walker's Low')
- Russian sage (Salvia yangii)
- Golden Oats (Stipa gigantea)
- Purple Top (Verbena bonariensis)
- Silky-spike Melic (Melica ciliata)
- Masterwort (Astrantia major 'White Giant')

Shrub and perennial planting



Abelia 'Edward Goucher'



Pittosporum tobira
'Nanum'



Nepeta racemosa 'Walk-
er's Low'



Ceanothus x delileanus



Deschampsia cespitosa
'Goldtau'



Verbena bonariensis



Melica ciliata



Astrantia major 'White
Giant'

Planting and Ecology

Woodland understorey planting - Indicative selection

- Poet's Laurel (*Danae racemosa*)
- Butcher's-broom (*Ruscus aculeatus*)
- Sweet Box (*Sarcococca confusa*)
- Viburnum (*Viburnum tinus*)
- Japanese anemone (*Anemone x hybrida* 'Honorine Jobert')
- Scaly male fern (*Dryopteris affinis*)
- Colchian barrenwort (*Epimedium pinnatum* subsp. *Colchicum*)
- Sweet Woodruff (*Galium odoratum*)
- Mayflower (*Geranium macrorrhizum* 'White Ness')
- Wood avens (*Geum urbanum*)
- Snow Rush (*Luzula nivea*)
- Soft Shield Fern (*Polystichum setiferum*)
- Primrose (*Primula vulgaris*)

Woodland understorey



Sarcococca confusa



Viburnum tinus



Galium odoratum



Geranium macrorrhizum
'White Ness'



Dryopteris affinis



Luzula nivea



Geum urbanum



Primula vulgaris

Planting and Ecology

Wildflower Meadow Planting - Indicative selection

- Field Scabious (*Knautia arvensis*)
- Knapweed (*Centaurea nigra*)
- Wild carrot (*Daucus carota*)
- Yarrow (*Achillea millefolium*)
- Red fescue (*Festuca rubra*)
- Lady's bedstraw (*Galium verum*)
- Oxeye daisy (*Leucanthemum vulgare*)
- Bird's Foot Trefoil (*Lotus corniculatus*)
- Sweet vernal grass (*Anthoxanthum odoratum*)
- Quaking-grass (*Briza media*)

Wildflower Meadow



Centaurea nigra



Anthoxanthum odoratum



Leucanthemum vulgare



Galium verum



Daucus carota



Knautia arvensis



Achillea millefolium



Festuca rubra

Planting and Ecology

Swale Planting - Indicative selection

- Devil's-bit Scabious (*Succisa pratensis*)
- Tufted Hair-grass (*Deschampsia cespitosa*)
- Ragged robin (*Silene flos-cuculi*)
- Siberian Dogwood (*Cornus alba 'Sibirica'*)
- Giant Hyssop (*Agastache 'Blackadder'*)
- Grey Sedge (*Carex divulsa*)
- Tukauki (*Libertia grandiflora*)
- Great Wood-rush (*Luzula sylvatica*)
- Purple Moor Grass (*Molinia caerulea*)
- Meadowsweet (*Filipendula ulmaria*)
- Water Avens (*Geum rivale*)

Swale Planting



Silene flos-cuculi



Agastache 'Blackadder'



Molinia caerulea



Geum rivale



Filipendula ulmaria



Deschampsia cespitosa



Libertia grandiflora



Succisa pratensis

Planting and Ecology

Native Shrub Mix - Indicative selection

- Hawthorn (*Crataegus monogyna*)
- Hazel (*Corylus avellana*)
- Crab apple (*Malus sylvestris*)
- Dogrose (*Rosa canina*)
- Dogwood (*Cornus sanguinea*)

Native Shrub Mix



Crataegus monogyna



Cornus sanguinea



Corylus avellana



Malus sylvestris



Rosa canina

Planting and Ecology

Podium Herb Garden

The podiums have been designed so that they can accommodate areas dedicated to edible planting, predominantly herbs, offering various benefits to the biodiversity and its users. The sensory experience for the podium gardens can be enhanced by introducing some colourful edible planting within the planting palette.

The plants promote discovery and learning for children and promote biodiversity by attracting birds and insects.

Opportunity for learning and discovery



Interesting plant forms



Boost of colours and opportunity to attract wildlife



Play Strategy

The play provision has been calculated based on the Plots D and K unit mix using the October 2019 GLA play calculator.

Play space is sensitively integrated throughout the park to provide a variety of experiences. They are concentrated within a number of flat areas and mounds, making the most of the park's topography. The concept is to create an accessible playable landscape - encouraging interaction and engagement with the natural world.

Age groups have been distributed so that the youngest play provision is on the doorstep of residential units. For Plot D this is allocated on the communal podiums, with youngest age group play for Plot K provided within the park.

A small amount of 5-11 year old play for Plot D is provided on the podiums, with the remainder located in the park within 100m walking distance from the apartments.

Older age group play provisions are located within the park, in the permitted walking distance from homes.

Play space requirement

Age	Block A	Block B	Block D	Block K	Total
0 to 4	All provided within phase	All provided within phase	286 sqm	567 sqm	853 sqm
5 to 11	All provided within phase	All provided within phase	188 sqm	445 sqm	633 sqm
12+	97 sqm	78 sqm	66 sqm	332 sqm	573 sqm
	Required from previous phases of Royal Arsenal Riverside masterplan				2,059 sqm



Play distribution diagram



Play trail