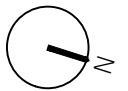
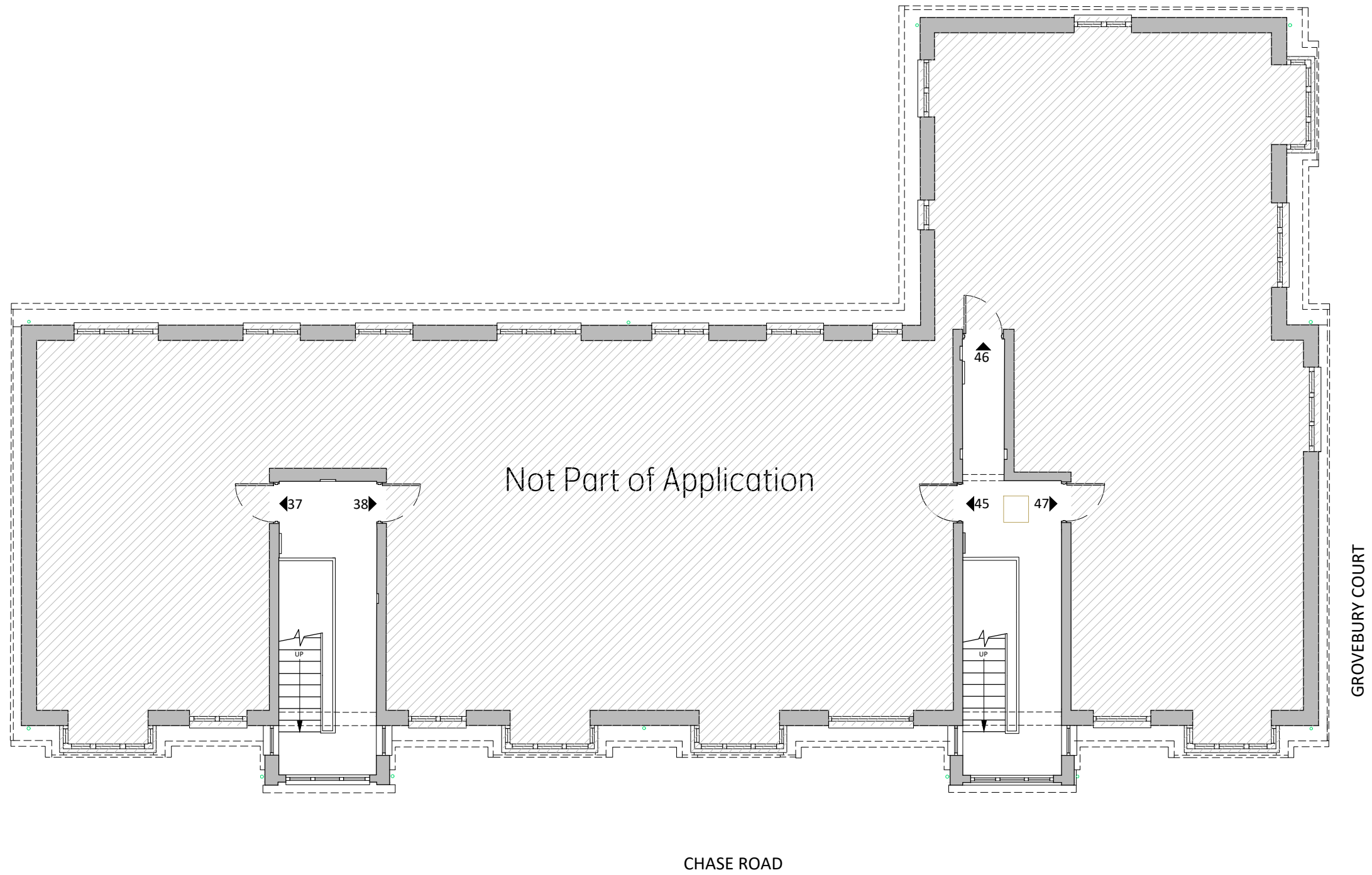


USE FIGURED DIMENSIONS ONLY. DO NOT SCALE FROM THIS DRAWING EXCEPT FOR PLANNING PURPOSES. ALL DIMENSIONS MUST BE CHECKED ON SITE. ANY INCONSISTENCIES MUST BE REPORTED BACK TO THE ARCHITECT. THIS DRAWING AND ANY DESIGNS INDICATED THEREON ARE THE COPYRIGHT OF BROOKS MURRAY ARCHITECTS. ALL RIGHTS ARE RESERVED. NO PART OF THIS WORK MAY BE PRODUCED WITHOUT PRIOR PERMISSION IN WRITING FROM BROOKS MURRAY ARCHITECTS. THESE DRAWINGS ARE INTENDED FOR PLANNING PURPOSES ONLY. THEY ARE NOT TO BE USED FOR BUILDING, AND IF THEY ARE, THIS WILL BE IN BREACH OF BROOKS MURRAY'S COPYRIGHT.

REV.	AMENDMENT	BY:	DATE
-			



**Brooks Murray Architects**  
 41 Tabernacle Street, London, EC2A 4AA  
 +44 (0)2077399955 architects@brooksmurray.com



CLIENT:  
 Grovebury Southgate LTD

JOB:  
 Grovebury Court  
 London  
 N14 4JR

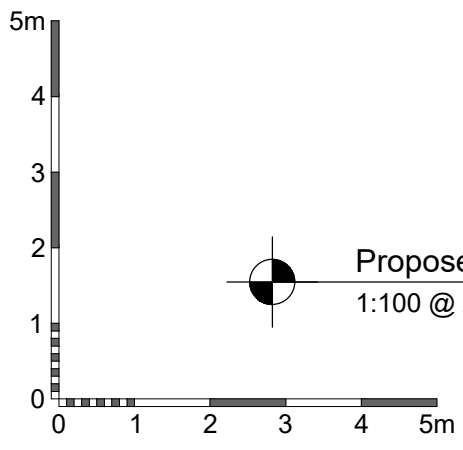
DRAWING TITLE:  
 Proposed Second Floor  
 Plan

SCALE:  
 1:100@A3

DATE:  
 February 2024

STATUS:  
 Permitted Development

DRAWING NUMBER: 1357.01.102    REV:    ISSUED BY: TS



**Proposed Second Floor Plan**  
 1:100 @ A3