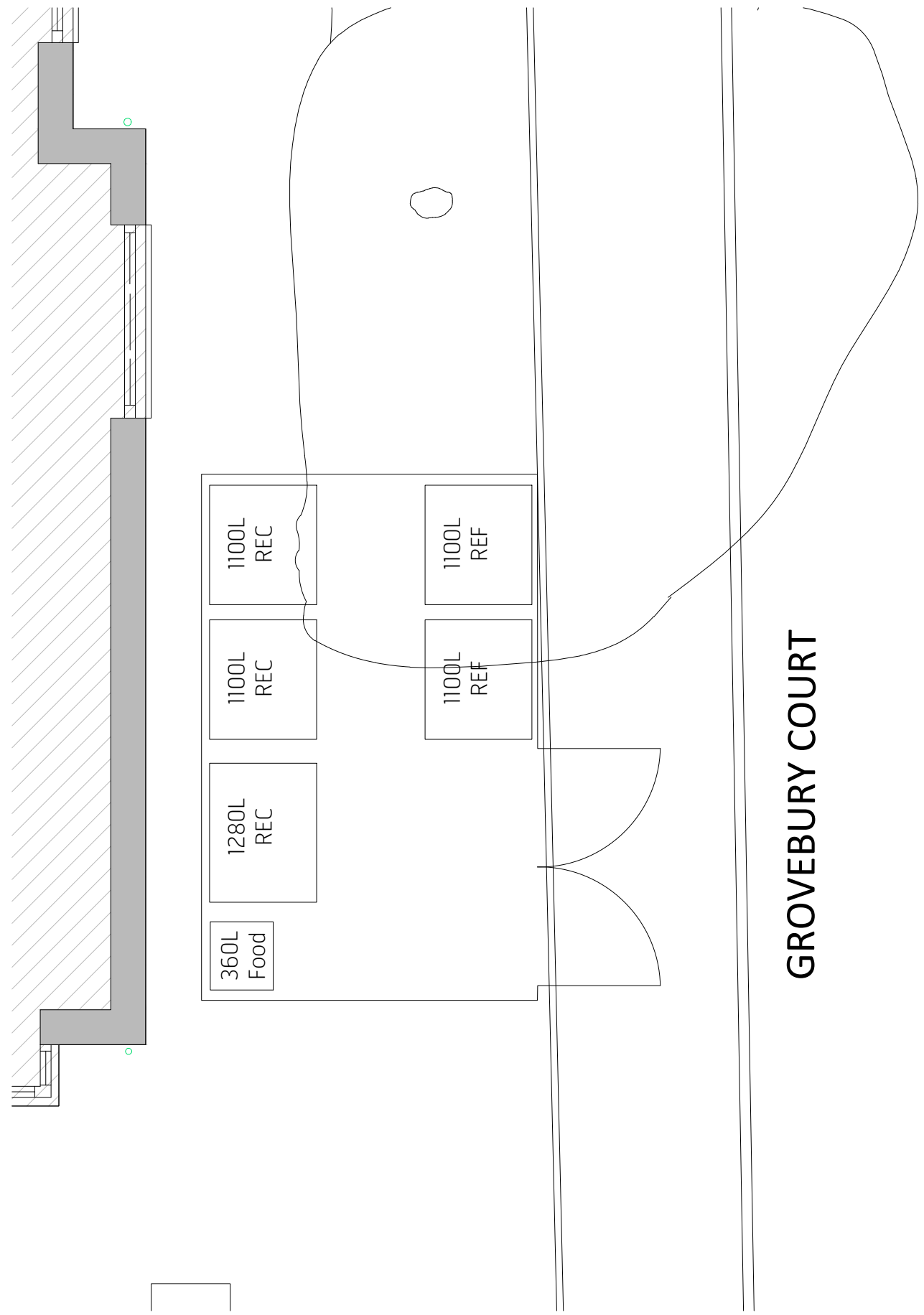
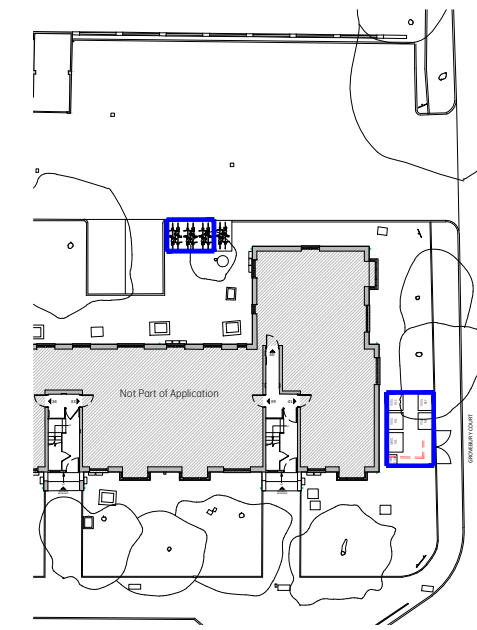
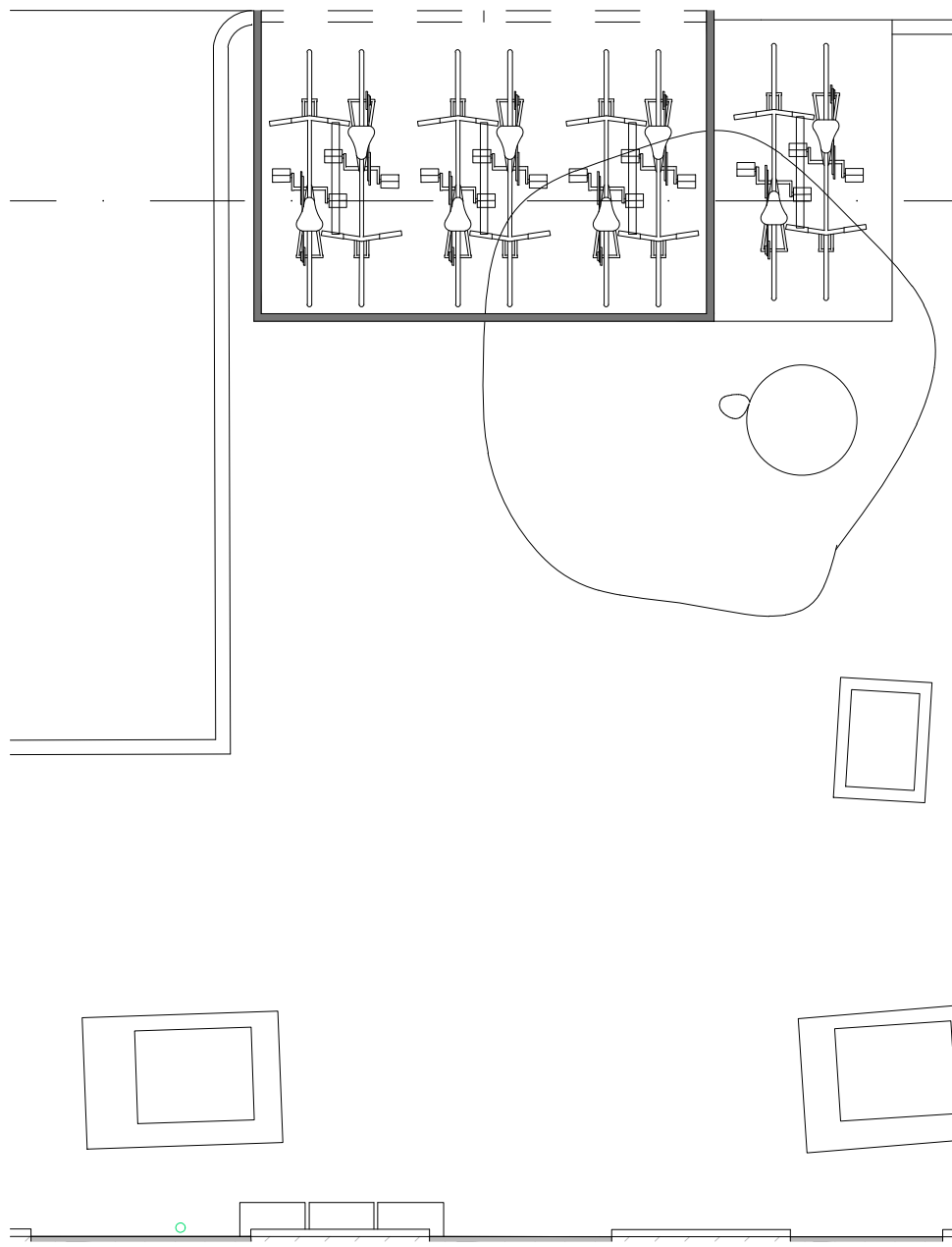


USE FIGURED DIMENSIONS ONLY. DO NOT SCALE FROM THIS DRAWING EXCEPT FOR PLANNING PURPOSES. ALL DIMENSIONS MUST BE CHECKED ON SITE. ANY INCONSISTENCIES MUST BE REPORTED BACK TO THE ARCHITECT. THIS DRAWING AND ANY DESIGNS INDICATED THEREON ARE THE COPYRIGHT OF BROOKS / MURRAY ARCHITECTS. ALL RIGHTS ARE RESERVED. NO PART OF THIS WORK MAY BE PRODUCED WITHOUT PRIOR PERMISSION IN WRITING FROM BROOKS / MURRAY ARCHITECTS. THESE DRAWINGS ARE INTENDED FOR PLANNING PURPOSES ONLY. THEY ARE NOT TO BE USED FOR BUILDING, AND IF THEY ARE, THIS WILL BE IN BREACH OF BROOKS MURRAY'S COPYRIGHT.

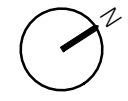
REV.	AMENDMENT	BY:	DATE



GROVEBURY COURT



Key Plan
1:500 @ A3



Brooks Murray Architects
41 Tabernacle Street, London, EC2A 4AA
+44 (0)2077399955 architects@brooksmurray.com



CLIENT:
Grovebury Southgate LTD

JOB:
Grovebury Court
London
N14 4JR

DRAWING TITLE:
Proposed Bin and Bike Store

SCALE:
1:50 @A3

DATE:
February 2024

STATUS:
Permitted Development

DRAWING NUMBER: 1357.01.105 REV: ISSUED BY: TS

