

Design & Access Statement

Wickwoods Country Club  
Padel Courts

*David Lloyd*  
— CLUBS —



## CONTENTS

1.	INTRODUCTION .....	4
2.	SITE AND SURROUNDING CONTEXT .....	5
3.	PADEL COURTS .....	9
4.	DESIGN PROPOSAL .....	10
5.	ACCESS .....	16

## ILLUSTRATIONS

FIG. 1	SITE LOCATION .....	4
FIG. 2	EXISTING TENNIS COURTS ON PROPOSED SITE .....	5
FIG. 3	EXISTING SITE PLAN .....	6
FIG. 4	PROPOSED SITE PLAN .....	7
FIG. 5	AERIAL VIEW .....	8
FIG. 6	PADEL COURT MATERIAL PLAN .....	9
FIG. 7	PADEL COURT ELEVATIONS .....	9
FIG. 8	TYPICAL PADEL COURT 3D RENDER .....	10
FIG. 9	TYPICAL PADEL COURT IMAGE .....	10





©GOOGLE



**Fig. 1** Site Location

## 1. Introduction

This Design and Access Statement has been prepared by Hadfield Cawkwell Davidson to accompany the full planning application for the provision of new Padel Courts on the site of existing tennis courts at the David Lloyd Club, Wickwoods Country Club.

### Application Overview

This document is to be read in conjunction with the application drawings, scheduled below:

- A-PL-100 Location Plan
- A-PL-101 Existing Site Plan
- A-PL-102 Proposed Site Plan
- A-PL-103 Padel Court Plan and Elevations



**Fig. 2** Existing Tennis Courts On Proposed Site

## 2. Site & Surrounding Context

### 2.1 Location

Wickwoods Country Club is located south of the village of Albourne in Mid Sussex. Close to Burgess Hill, Haywards Heath, Horsham and a short drive to Brighton and Worthing on the south coast.

### 2.2 Access

Wickwoods Country Club is well connected to existing infrastructure, with vehicle access off Shaves Wood Lane.

### 2.3 Existing building and site

The building's principal frontage faces east onto a dedicated car park which extends both north and south of the building. The existing tennis courts are located to the north west of the building. To the north, south and west the site is bounded by hedgerow and trees. The existing outdoor swimming pool is located immediately to the south west of the building. The proposed site for the Padel courts will be in the existing footprint of the tennis courts.

### 2.4 Surrounding context

The club is set in wooded grounds in a mainly agricultural area with a small number of residential properties in the surrounding area.

### 2.5 Existing landscaping and Ecology

The site is surrounded by perimeter landscaping to the north, south and west including mature trees and vegetation. The existing club is hidden from view from Shaves Wood Lane by mature trees and hedgerow. The car park contains rows of trees and planting. The topography of the site and surrounding landform is generally flat.

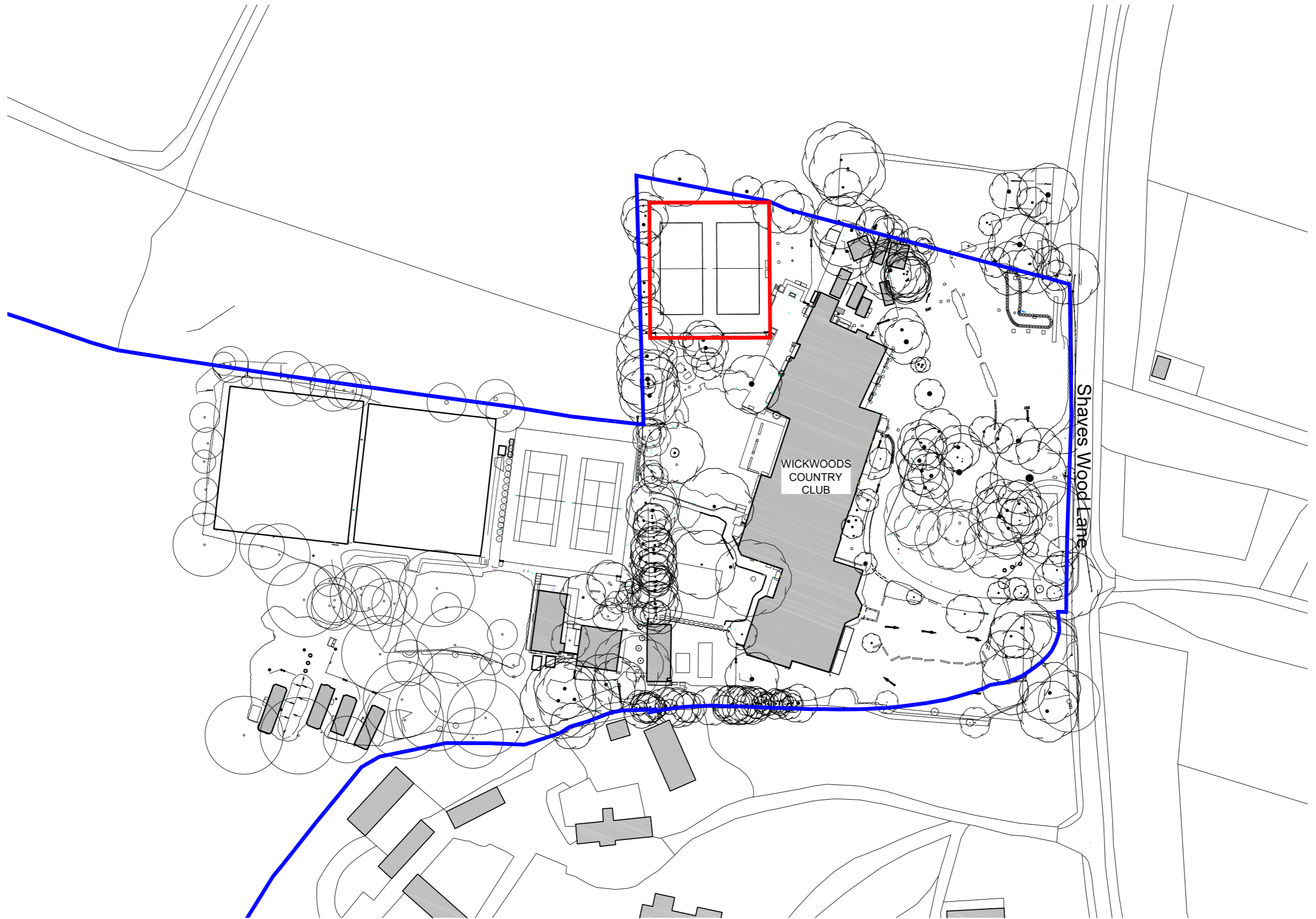


Fig. 3 Existing Site Plan





Fig. 4 Proposed Site Plan








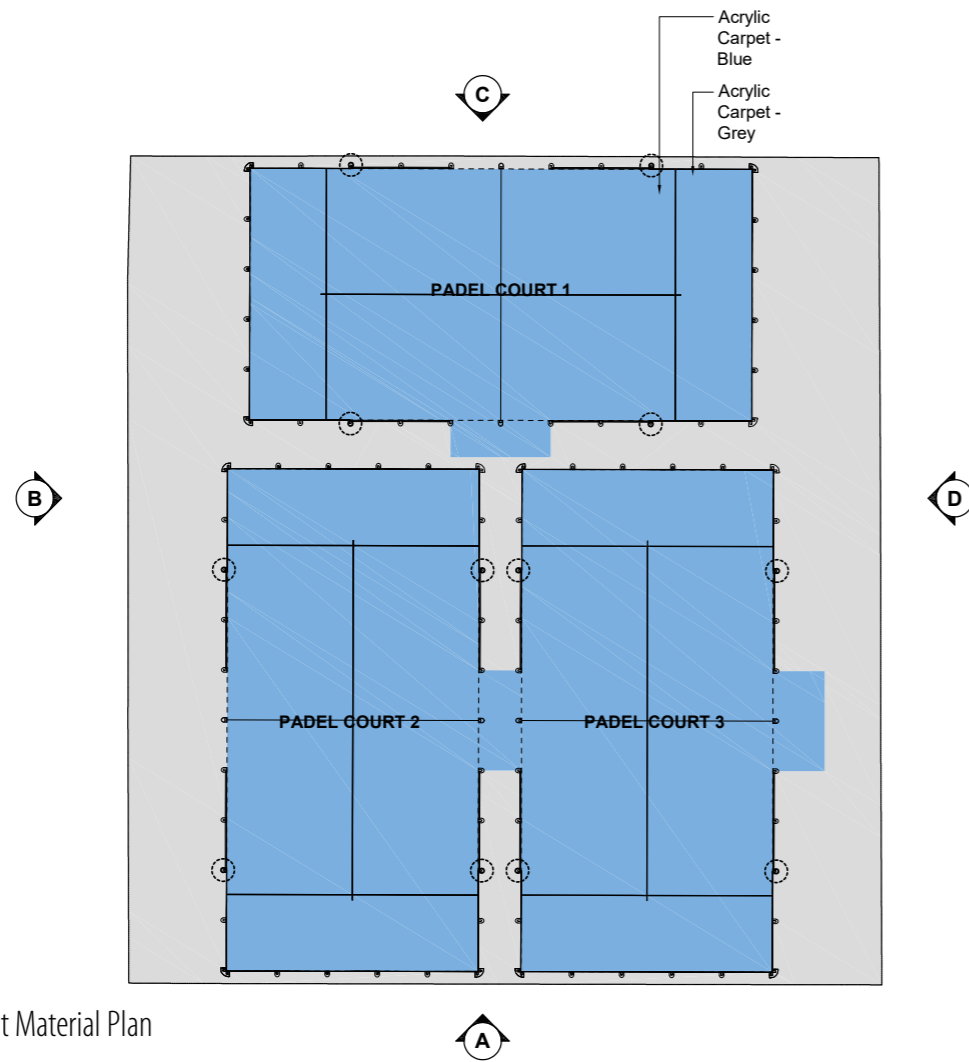
- KEY:**
-  BUILDING ENTRANCE
  -  SITE OF PROPOSED EXTENSION
  -  SITE ACCESS

Fig. 5 Aerial View





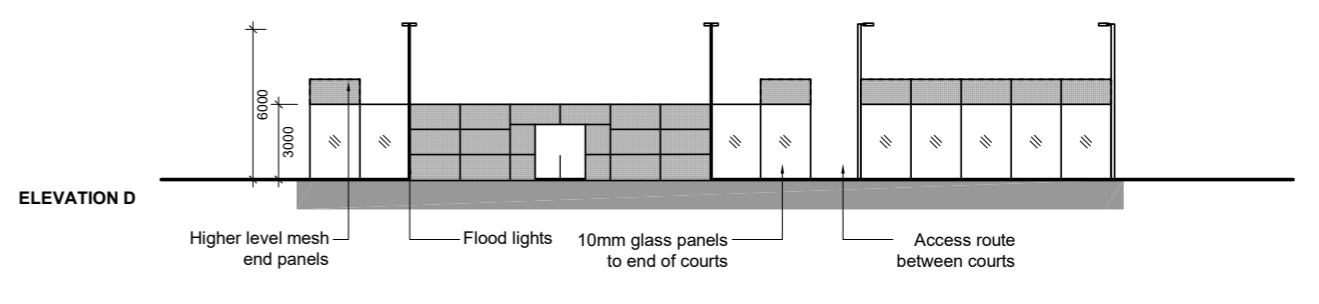
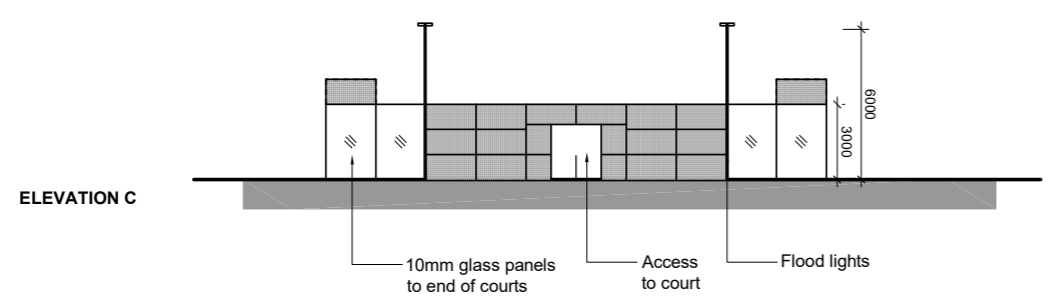
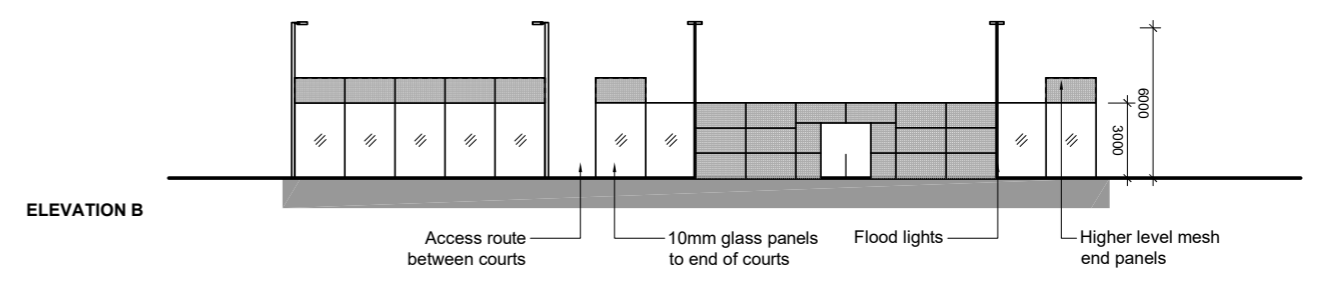
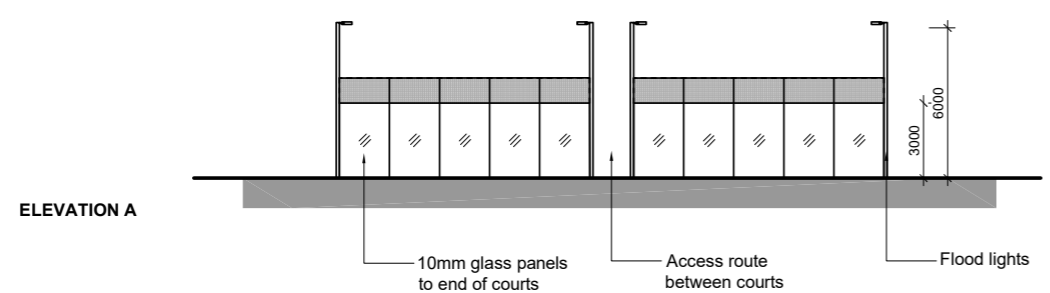
**Fig. 6** Padel Court Material Plan

### 3. Padel Courts

Padel tennis is a form of tennis that is easy to play, fun and extremely sociable. It is played mainly in a doubles format on an enclosed court about a third of the size of a tennis court and can be played in groups of mixed ages and abilities, as it is not power dominant. The rules are broadly the same as tennis, although you serve underhand and the Perspex walls are used as part of the game with the ball allowed to bounce off them.

Padel is one of the fastest growing sports across continental Europe, with over six million people currently playing in Spain alone. As of November 2020 there are around 6,000 active padel players across Britain. There are also currently 107 padel courts at 52 clubs – a number that is set to grow substantially over the coming years.

David Lloyd are at the forefront of this tennis revolution in the UK and are now proposing all of their new clubs to be provided with premium Padel facilities.



**Fig. 7** Padel Court Elevations



**Fig. 8** Typical Padel Court 3D Render

#### 4. Design Proposal

It is proposed to replace the existing tennis courts with 3 no. padel courts.

Designed to stay true to the sport's origins, these padel courts will feature a pillars type structure, anti-injury mesh infill panels and 10mm approved glass resulting in attractive and minimalist aesthetics. The playing surface will be the latest technology in artificial grass, ensuring that these facilities will be attractive to everyone from total beginners to seasoned players.

The 4no. 240W LED projectors used to evenly light the space offer a large reduction in potential energy use when compared to traditional halide lamps, with longer life and greater eco-efficiency.



**Fig. 9** Typical Padel Court Image

## 5. Access

### 5.1 Vehicular and transport links

There are no proposed changes to the site access and transport links.

### 5.2 Disabled Access

The David Lloyd Club has allocated disabled parking and full level access throughout with disabled changing facilities and appropriate sporting and leisure activities. Level access is to be used across the proposed works to promote free movement of all members throughout the facility.

### 5.3 Wayfinding

The directional and information signage adopted in the club will be supplemented with pictograms or symbols, wherever possible.

Design & Access Statement prepared by:

**Hadfield Cawkwell Davidson Limited**

13 Broomgrove Road

Sheffield, S10 2LZ

tel. 0114 266 8181

[www.hcd.co.uk](http://www.hcd.co.uk)

2022-226\_DLC Wickwoods Country Club\_March 2024\_P02