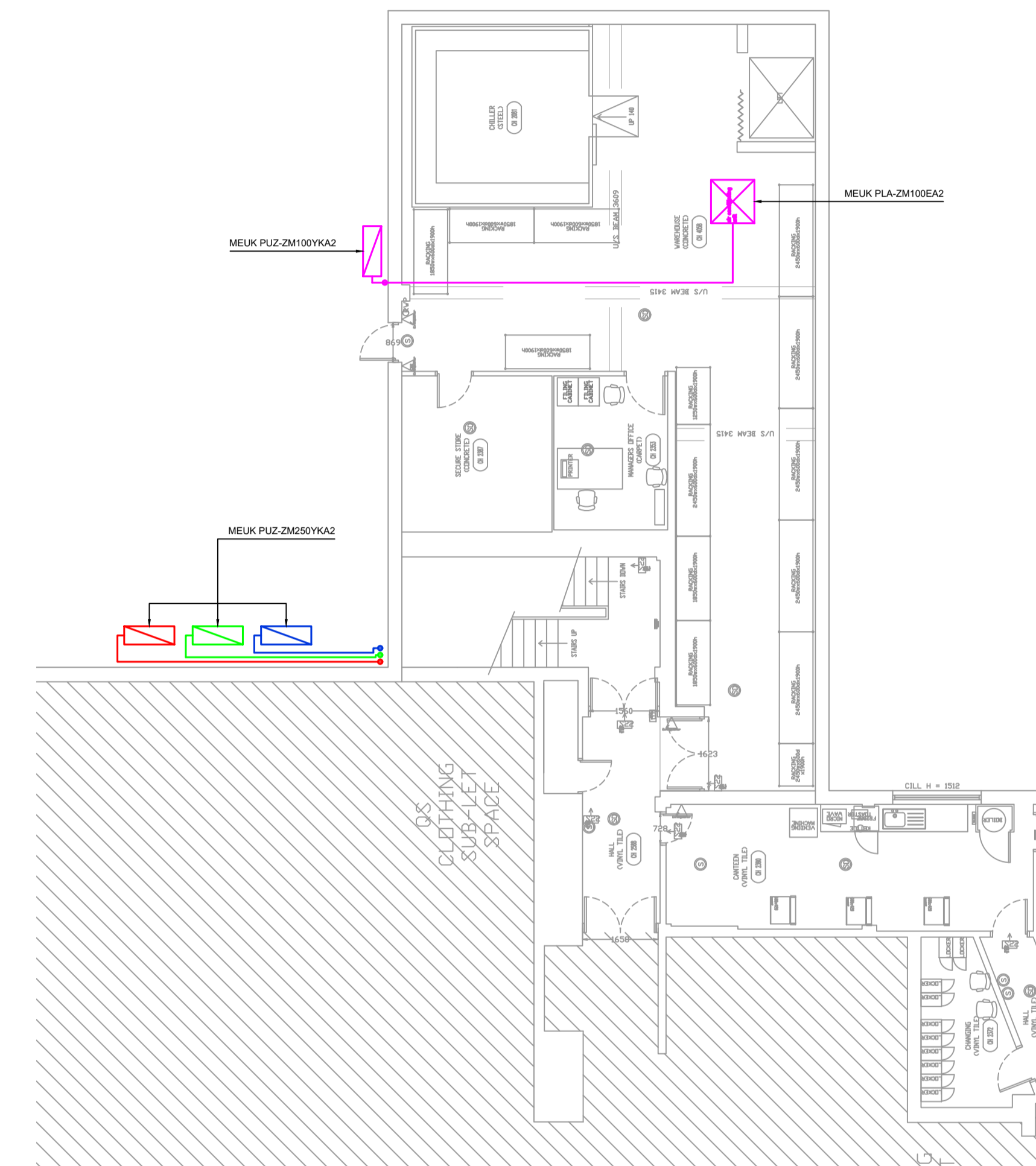


Ground Floor



First Floor

PLA-ZM INDOOR UNITS		PLA-ZM06EA2
CAPACITY (kW)	Heating (nominal) Cooling (nominal) Heating (UK) Cooling (UK)	11.2 (4.5-14.0) 9.5 (4.9-11.4) 9.5 (3.85-11.5) 9.2 (4.5-10.5)
SHF (nominal)		0.77
COP / EER (nominal)		4.30 / 4.60
SCOP (ipsh) / SEER (psc) (BS EN14825)		4.80 / 7.50
EP ENERGY EFFICIENCY CLASS	Heating/Cooling	A++ / A++
AIRFLOW (m³/s)	Lo-M-M2-H	317 / 367 / 417 / 467
PIPE SIZE (mm (in))	Gas / Liquid	15.88 (0.62) / 9.52 (3/8")
SOUND PRESSURE LEVEL (dB(A))	Lo-M-M2-H	31-34-37-40
SOUND POWER LEVEL (dB(A))		61
DIMENSIONS (mm)	Width x Depth x Height (Galle)	840 (950) x 840 (950) x 258 (40)
WEIGHT (kg)	Unit / Galle	26 / 15
ELECTRICAL SUPPLY		Fed by Outdoor Unit
FUSE RATING (BS88) - HRC (A)		6
INTERCONNECTING CABLE NO. CORES		4
GRIFFE REFERENCE	White Black Satin	PLP-6EA PLP-6EA-B PAC-SK30F-E
V BLOCKING FILTER		PAR-41MAA
WIRED REMOTE CONTROLLER REFERENCE		PAR-SL101A-E
WIRELESS REMOTE CONTROLLER REFERENCE		PAR-SL101A-E

PLU-ZM OUTDOOR UNITS		PLU-ZM100YKA2
SOUND PRESSURE LEVEL (dB(A))	Heating/Cooling	51 / 49
SOUND POWER LEVEL (dB(A))	Cooling	69
HEIGHT (kg)		111
DIMENSIONS (mm)	Width x Depth x Height	1050 x 330 x 40 x 1338
ELECTRICAL SUPPLY		380-415V, 50Hz
PHASE		Three
SYSTEM POWER INPUT (kW)	Heating/Cooling (nominal) Heating/Cooling (UK)	2.80 / 2.065 2.09 / 1.77
STARTING CURRENT (A)		2.5
SYSTEM RUNNING CURRENT (A)	Heating/Cooling (MAX)	3.75 / 2.96 (8.5)
FUSE RATING (BS88) - HRC (A)		16
MAINS CABLE NO. CORES		5
MAX PIPE LENGTH (m)		100
MAX HEIGHT DIFFERENCE (m)		30
CHARGE REFRIGERANT (kg) / CO <sub>2</sub> EQUIVALENT (l) - R32 (GW 675) - 30m		3.60 / 2.43
MAX ADDITIONAL REFRIGERANT (kg) / CO <sub>2</sub> EQUIVALENT (l) - R32 (GW 675)		2.40 / 1.62



PLU-ZM OUTDOOR UNITS		PLU-ZM200YKA2	PLU-ZM250YKA2
SOUND PRESSURE LEVEL (dB(A))	Heating/Cooling	62 / 59	62 / 59
WEIGHT (kg)		137	138
DIMENSIONS (mm)	Width x Depth x Height	1050 x 330 x 40 x 1338	1050 x 330 x 40 x 1338
ELECTRICAL SUPPLY		380-415V, 50Hz	380-415V, 50Hz
PHASE		Three	Three
SYSTEM POWER INPUT (kW)	Heating/Cooling (nominal) Heating/Cooling (UK)	6.40 / 5.76 5.18 / 4.88	7.94 / 7.21 6.43 / 6.13
STARTING CURRENT (A)		5.0	5.0
SYSTEM RUNNING CURRENT (A)	Heating/Cooling (MAX)	9.57 / 8.58 (22.5)	13.3 / 11.6 (22.5)
FUSE RATING (BS88) - HRC (A)		25	25
MAINS CABLE NO. CORES		5	5
MAX PIPE LENGTH (m)		100	100
MAX HEIGHT DIFFERENCE (m)		30	30
CHARGE REFRIGERANT (kg) / CO <sub>2</sub> EQUIVALENT (l) - R32 (GW 675) - 30m		6.30 / 4.25	6.80 / 4.59
MAX ADDITIONAL REFRIGERANT (kg) / CO <sub>2</sub> EQUIVALENT (l) - R32 (GW 675)		2.90 / 1.96	2.40 / 1.62

PLA-ZM INDOOR UNITS		PLA-ZMS0EA2	PLA-ZM050EA2	PLA-ZM060EA2	PLA-ZM11EA2	PLA-ZM100EA2	PLA-ZM125EA2	PLA-ZM140EA2
CAPACITY (kW)	Heating (nominal) Cooling (nominal) Heating (UK) Cooling (UK)	4.1 (1.8-5.2) 3.8 (1.8-4.9) 3.5 (1.35-4.4) 3.3 (1.45-4.15)	6.0 (2.5-7.3) 5.0 (2.3-5.6) 5.1 (2.15-4.2) 4.6 (2.15-4.15)	7.0 (2.8-8.2) 6.1 (2.7-6.9) 6.0 (2.38-4.97) 5.6 (2.48-5.98)	8.0 (3.5-10.2) 7.1 (3.3-8.1) 6.8 (3.0-6.63) 6.55 (3.05-7.45)	11.2 (4.5-14.0) 9.5 (4.9-11.4) 9.3 (3.85-11.9) 9.2 (4.5-10.5)	14.0 (5.0-16.0) 12.5 (5.5-14.0) 11.9 (5.25-13.6) 11.5 (5.05-12.9)	16.0 (5.7-18.0) 13.4 (6.2-15.0) 13.8 (6.15-15.3) 12.9 (5.7-14.1)
SHF (nominal)		0.95	0.85	0.77	0.72	0.77	0.70	0.70
COP / EER (nominal)		5.00 / 5.10	4.40 / 4.52	4.10 / 4.20	4.40 / 4.30	4.30 / 4.60	3.81 / 3.70	3.71 / 3.55
SCOP (ipsh) / SEER (psc) (BS EN14825)		4.70 / 7.50	4.90 / 7.60	4.60 / 7.20	4.80 / 7.70	4.80 / 7.70	4.70 (185.1%) / 7.40 (303.3%)	4.60 (181.1%) / 7.00 (285.7%)
EP ENERGY EFFICIENCY CLASS	Heating/Cooling	A++ / A++	A++ / A++	A++ / A++	A++ / A++	A++ / A++	A++ / A++	A++ / A++
AIRFLOW (m³/s)	Lo-M-M2-H	183-217-250-287	200-233-267-300	220-253-287-300	280-317-350-383	317-367-417-467	350-400-433-483	400-433-483-533
PIPE SIZE (mm (in))	Gas / Liquid	12.7 (1/2") / 6.35 (1/4")	12.7 (1/2") / 6.35 (1/4")	15.88 (5/8") / 9.52 (3/8")	15.88 (5/8") / 9.52 (3/8")	15.88 (5/8") / 9.52 (3/8")	15.88 (5/8") / 9.52 (3/8")	15.88 (5/8") / 9.52 (3/8")
SOUND PRESSURE LEVEL (dB(A))	Lo-M-M2-H	26-28-29-31	27-29-31-32	27-29-31-32	28-30-33-36	31-34-37-40	33-36-39-41	36-39-42-44
SOUND POWER LEVEL (dB(A))		51	54	54	57	61	62	65
DIMENSIONS (mm)	Width x Depth x Height (Galle)	840 (950) x 840 (950) x 258 (40)	840 (950) x 840 (950) x 258 (40)	840 (950) x 840 (950) x 258 (40)	840 (950) x 840 (950) x 258 (40)	840 (950) x 840 (950) x 258 (40)	840 (950) x 840 (950) x 258 (40)	840 (950) x 840 (950) x 258 (40)
WEIGHT (kg)	Unit / Galle	21 / 15	21 / 15	21 / 15	24 / 15	26 / 15	26 / 15	26 / 15
ELECTRICAL SUPPLY		Fed by Outdoor Unit	Fed by Outdoor Unit	Fed by Outdoor Unit	Fed by Outdoor Unit	Fed by Outdoor Unit	Fed by Outdoor Unit	Fed by Outdoor Unit
FUSE RATING (BS88) - HRC (A)		6	6	6	6	6	6	6
INTERCONNECTING CABLE NO. CORES		4	4	4	4	4	4	4
GRIFFE REFERENCE	White Black Satin	PLP-6EA PLP-6EA-B	PLP-6EA PLP-6EA-B	PLP-6EA PLP-6EA-B	PLP-6EA PLP-6EA-B	PLP-6EA PLP-6EA-B	PLP-6EA PLP-6EA-B	PLP-6EA PLP-6EA-B
V BLOCKING FILTER		PAC-SK30F-E	PAC-SK30F-E	PAC-SK30F-E	PAC-SK30F-E	PAC-SK30F-E	PAC-SK30F-E	PAC-SK30F-E
WIRED REMOTE CONTROLLER REFERENCE		PAR-41MAA	PAR-41MAA	PAR-41MAA	PAR-41MAA	PAR-41MAA	PAR-41MAA	PAR-41MAA
WIRELESS REMOTE CONTROLLER REFERENCE		PAR-SL101A-E	PAR-SL101A-E	PAR-SL101A-E	PAR-SL101A-E	PAR-SL101A-E	PAR-SL101A-E	PAR-SL101A-E

**Notes/Legend**

- Do Not Scale.
- Cabinet setting out dimensions are based on customer information.
- All Dimensions are to be checked on site prior to installation.
- Cabinet, Coldroom and Plant installers are to check site access prior to installation.
- Refrigeration layout, pipework and drainage requirements are indicative only and subject to change to reflect updated layouts and on site conditions.

**Revision Details**

Rev	Date	Drawn/Checked	LCC / MW
1	12/01/24		

First Issue using St Budeaux Agreed Construction (V1)\_2(Version=1).dwg

**Un-Controlled Document**

**Preliminary**

Drawing No	Scale (A1)
300200470030-R1	1:100

Client

Co-op  
Tamar House  
Ground & 1st Floor  
Proposed AC Layouts

EPTA-UK  
Avonside House, Kingfisher Park,  
Headlands Business Park, Blashford,  
Ringwood, Hampshire  
BH24 3HX  
Tel: 01425 485700  
Fax: 01425 485701