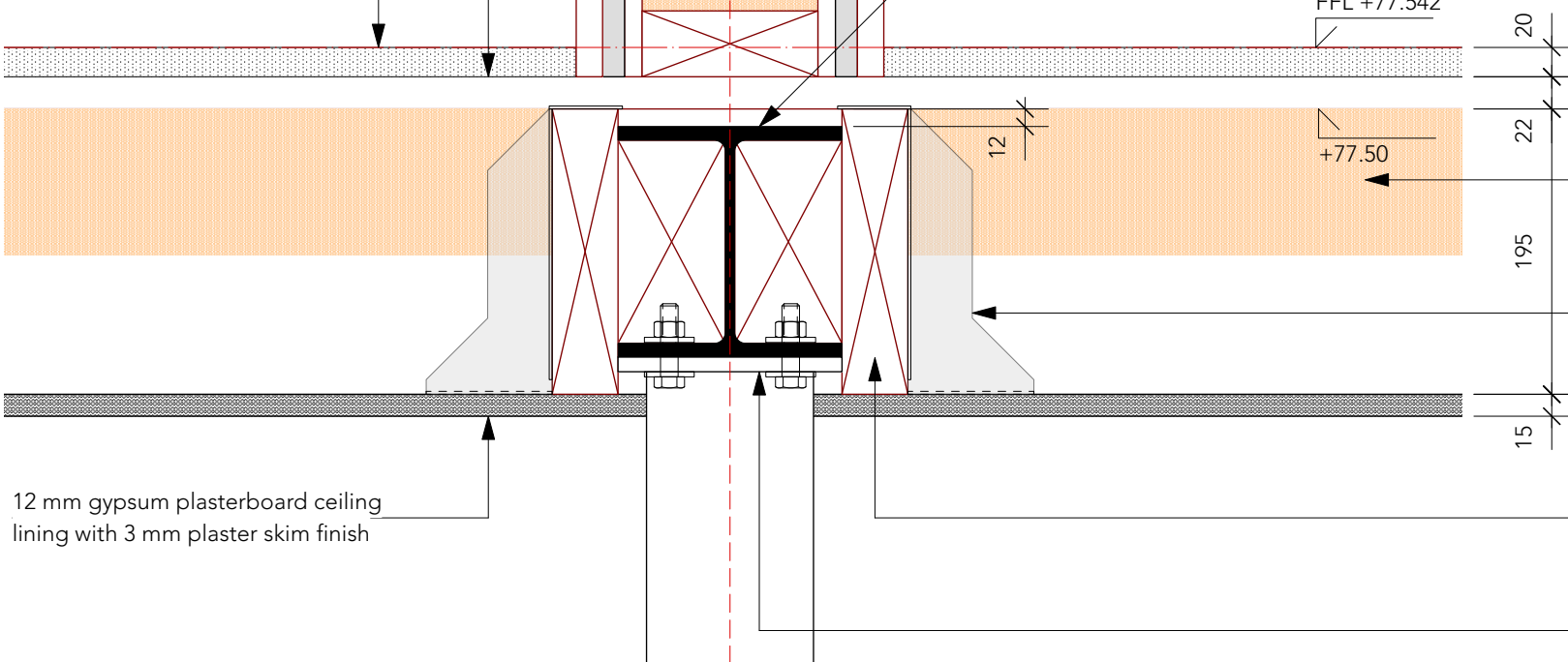


12 mm gypsum plasterboard lining with 3 mm plaster skim finish
22 mm T&G particleboard floor deck to BS EN 312, Type P5
20 mm floor finish zone

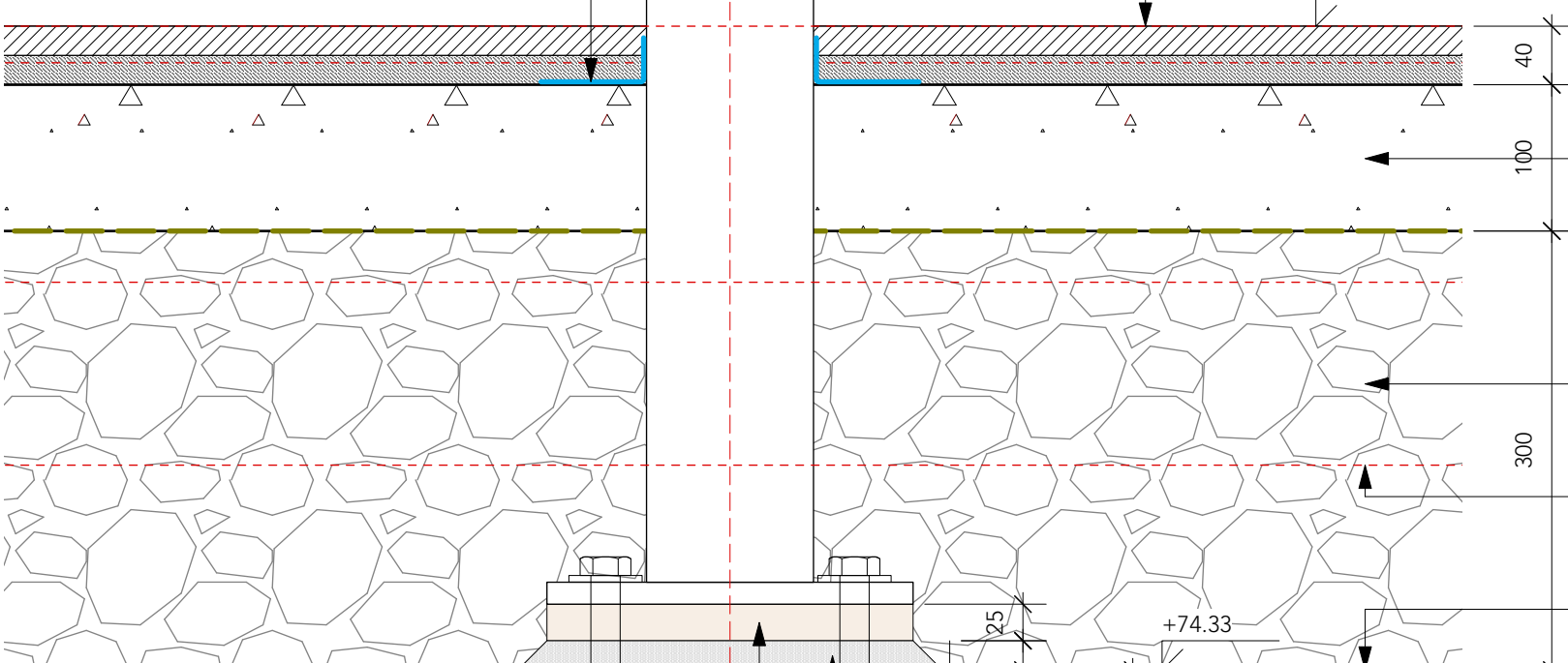
Loadbearing partition: 120 x 45 mm C24 studwork @ maximum 400 mm crs. with acoustic insulation between; 12 mm plywood sheathing both sides
152 UC 30; intumescent paint finish to provide 30 minutes fire protection



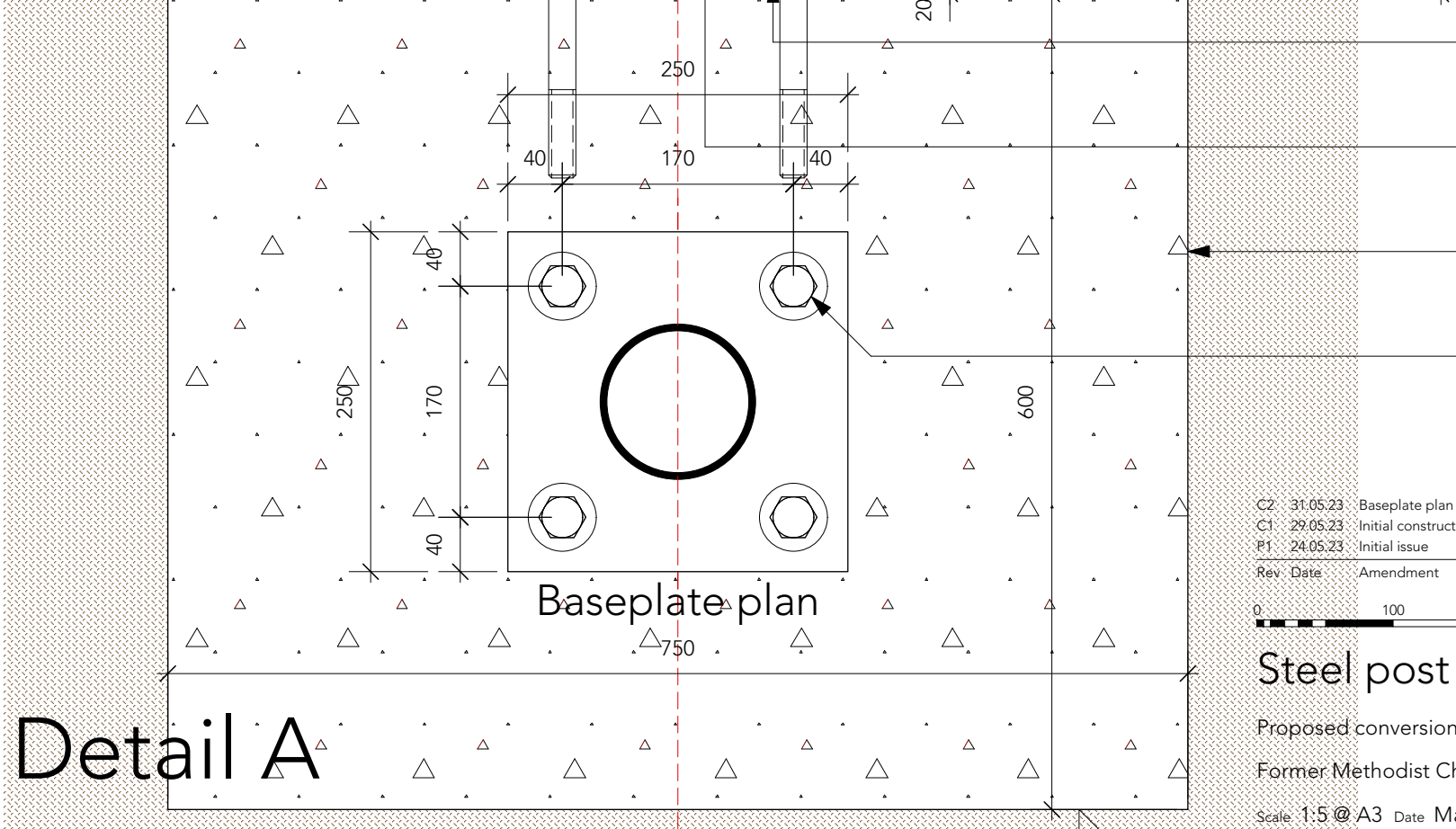
FFL +77.542
20
22
195
12
+77.50
152 UC 30; intumescent paint finish to provide 30 minutes fire protection
100 mm mineral wool acoustic insulation (minimum density 10 kg/m3) supported between 195 x 45 mm C24 timber floor joists @ maximum 400 mm crs.
galvanized steel timber-to-timber joist hanger to BS EN 845-1 to provide restraint equivalent to restraint straps @ 2 m crs.
195 x 45 mm C24 ledger beam bolted to timber packing between steel beam flanges
10 mm plate and bolted connection to structural engineer's details

Detail B

self-adhesive airtightness tape (AIRTIGHTNESS)



stone floor finish laid in proprietary NHL based mortar
FFL +74.77
40
100
1:2 NHL:sharp sand fibre reinforced limecrete screed incorporating UFH pipework fixed to proprietary plastics grid laid on geotextile membrane; lambda value 0.45 W/mK (AIRTIGHTNESS)
300
approx. existing sub floor level
reduce level; lay geotextile membrane on compacted sub grade
15 mm plate, bolted connection and packing to structural engineer's details
25 mm Farrat TBK structural thermal break; lambda 0.187 W/mK
in situ concrete pad to structural engineer's details
4 no. M20 bolts (grade 8.8)



Baseplate plan

Detail A

CZ	31.05.23	Baseplate plan added	AG
C1	29.05.23	Initial construction issue	AG
P1	24.05.23	Initial issue	AG
Rev.	Date	Amendment	By



Steel post + beam details

Proposed conversion to dwelling
Former Methodist Chapel, The Street, Braughing, Herts SG11 6RD
Scale: 1:5 @ A3 Date: May 2023 Drawing no. 22_404 | A | 504_C2