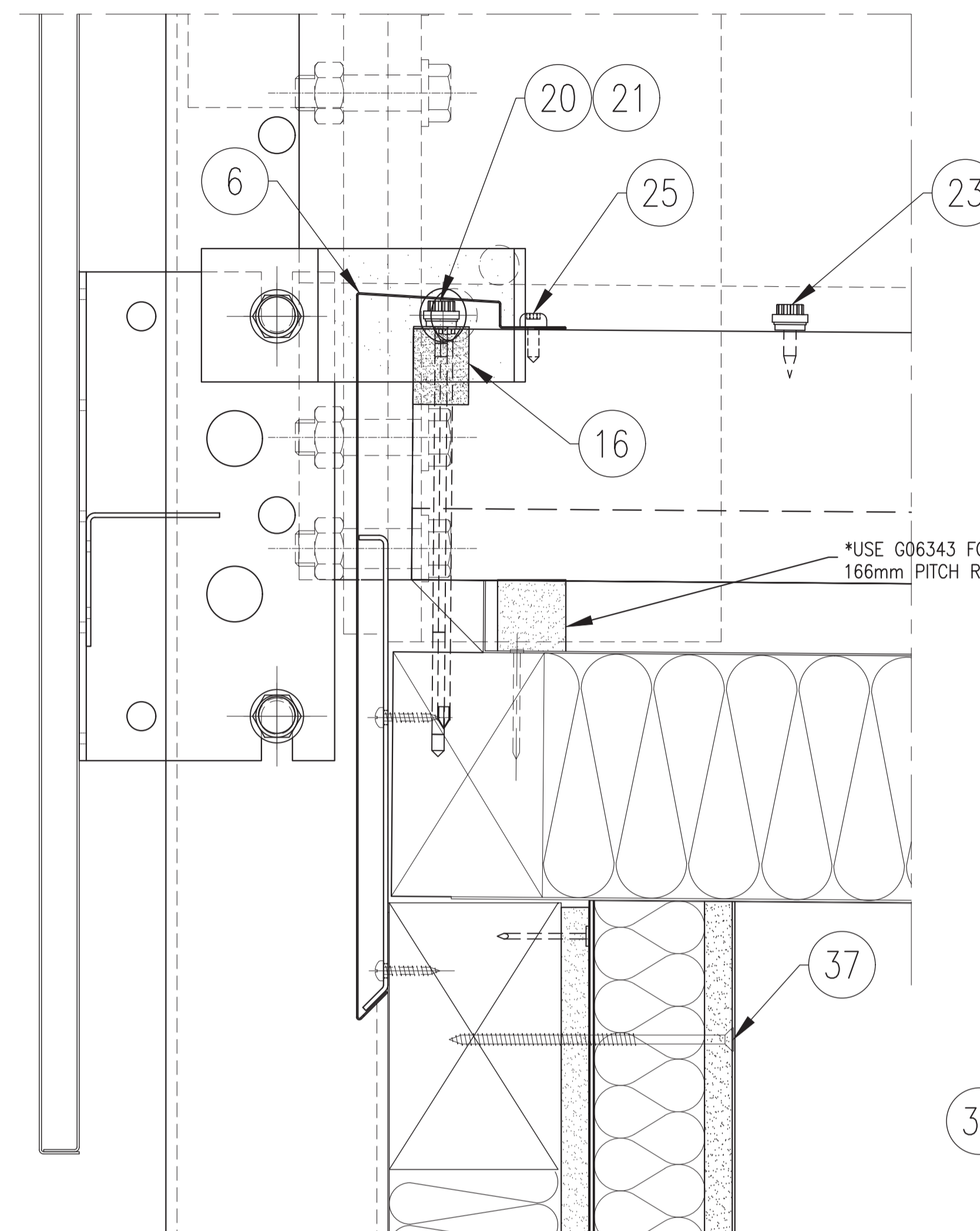
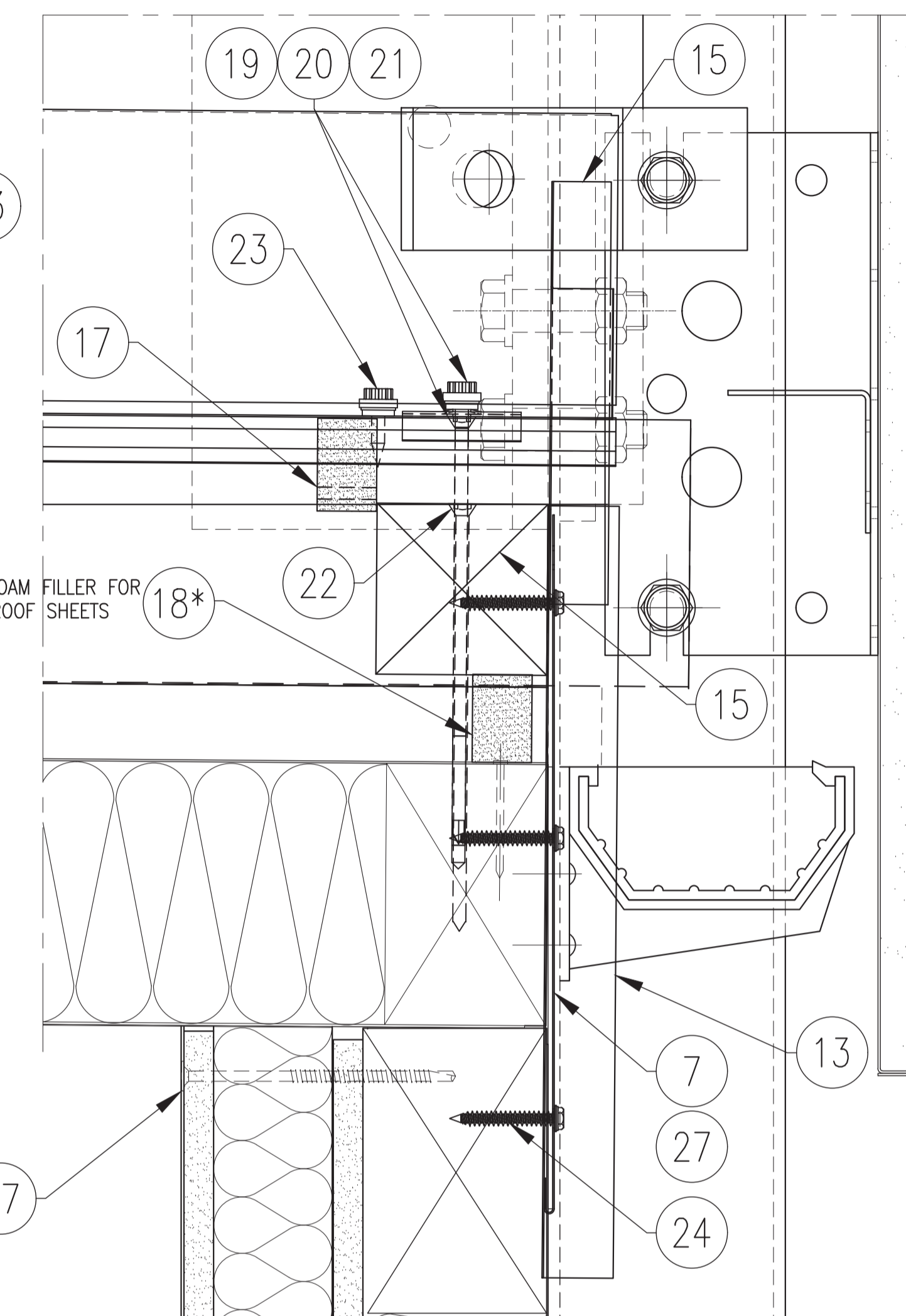


DETAIL C

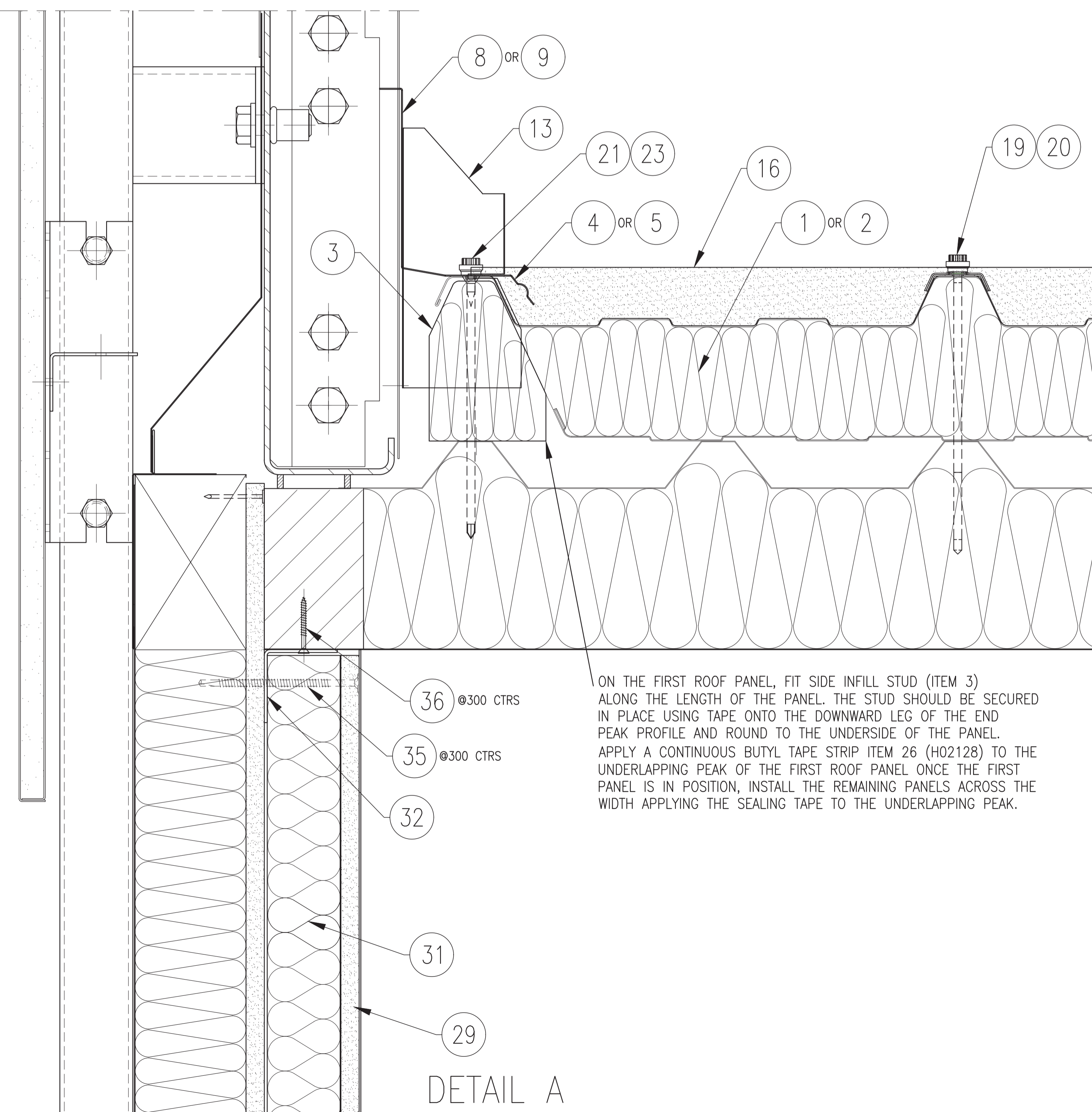
FIT THE HIGH END FACIA TRIM ITEM 6, INSERT FILLERS ITEM 16 (GX0016) UNDER TRIM AND FIX USING ITEM 25 (EE0021) PAN HEAD SELF-DRILL SCREWS THROUGH EACH PEAK. FACIAS TRIM WILL REQUIRE CUTTING AROUND ROOF SIDE TRIM. SEAL AROUND TRIM WITH LOW MODULUS SEALANT ITEM 28 (JB0009)



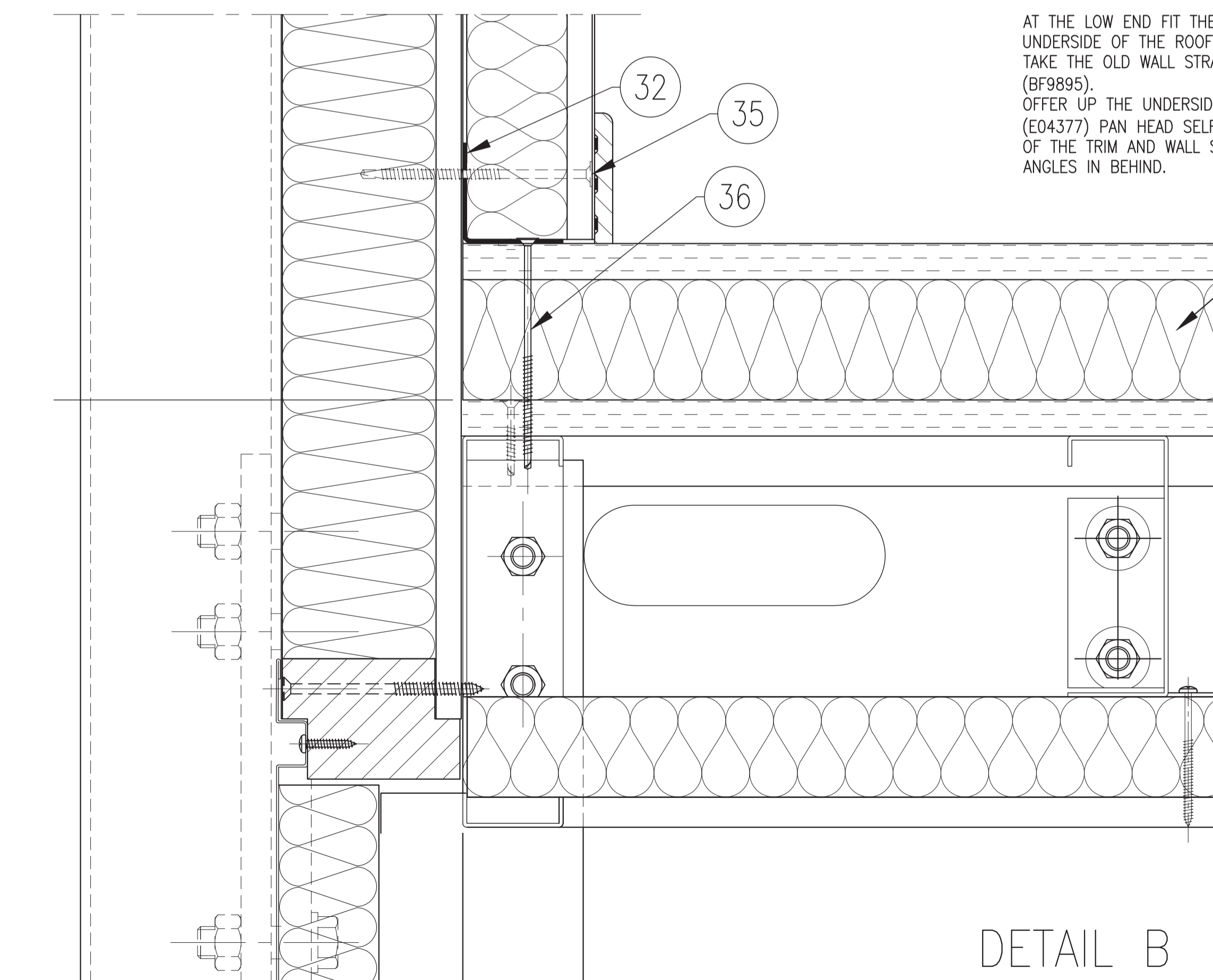
DETAIL D



AT THE LOW END FIT THE WALL CORNER COVER ANGLES UP AGAINST THE UNDERSIDE OF THE ROOF PROFILE. BOND ON WITH JB0060. TAKE THE OLD WALL STRAP AND SLOT INTO THE NEW FASCIA TRIM ITEM 7 (BF9895). OFFER UP THE UNDERSIDE OF THE ROOF PROFILE AND FIX USING ITEM 24 (E04377) PAN HEAD SELF-DRILLING SCREWS THROUGH THE HOLES OF THE TRIM AND WALL STRAP. THE TRIM SHOULD TRAP THE CORNER ANGLES IN BEHIND.



DETAIL B



Portakabin Limited Huntington York YO32 9PT Telephone 01904 611655 portakabin.co.uk		
Status: Manufacturing Released		
Specification: ULTIMA BUILDING SYSTEM		
Title: CROSS SECTIONS THERMAL UPGRADE 3.3M WIDE MODULES		
Drawn	Reviewed	Approved
R.SCHOFIELD	-	-
09/04/19	-	-
Scale @ A1		N.T.S.
Portakabin Number:	Sheet 3 of 8	Revision:
DQ0753		E