

Existing slate roof tiles and timber fixing battens to be carefully removed entirely and set to one side for re-use. New bitumen felt underlay to then be laid over existing timber battens and roofing tiles being re-installed.
NOTE: To avoid condensation in roof void, adequate ventilation to be provided by means of proprietary eaves and ridge in-line proprietary venting.

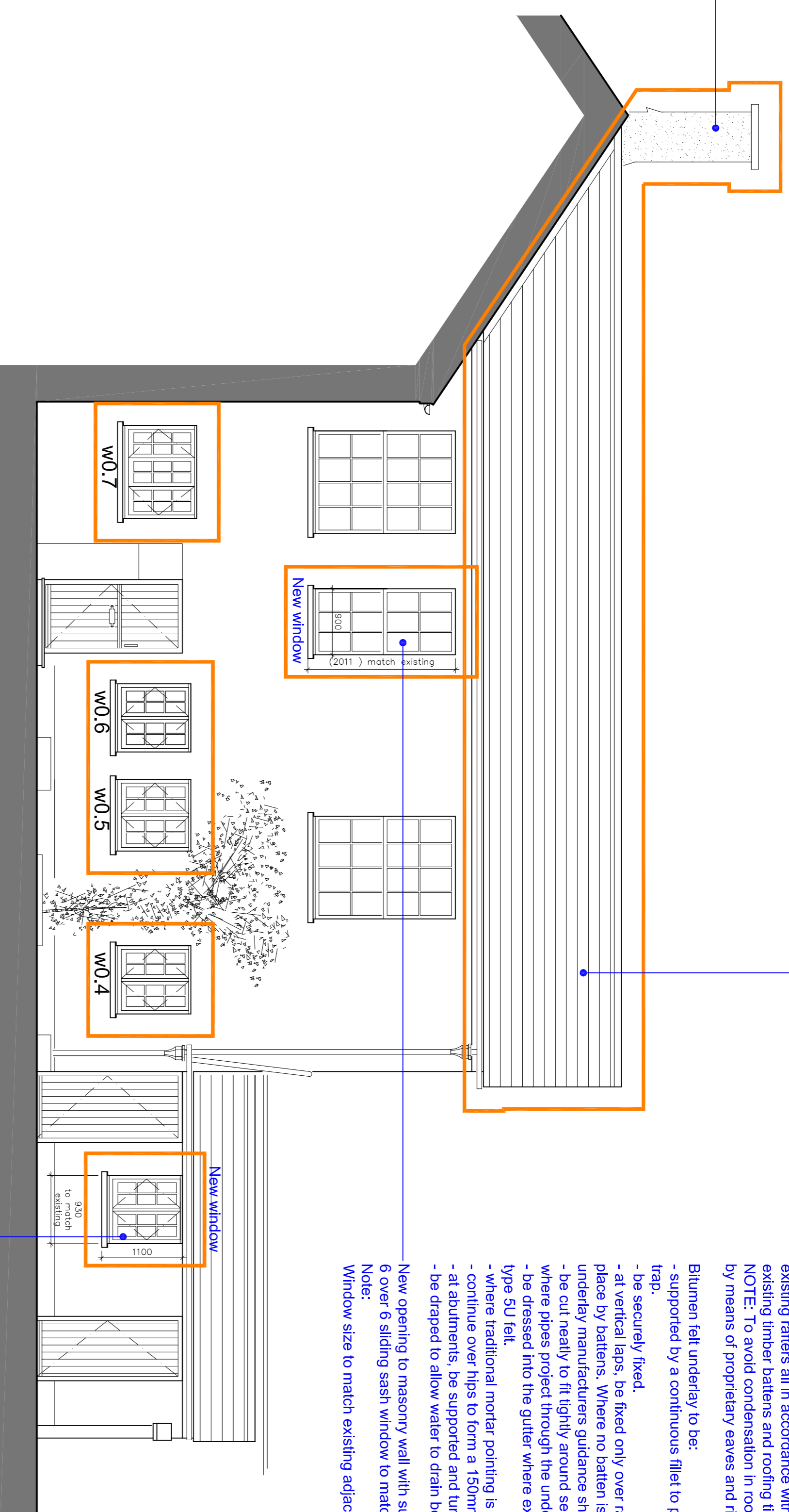
Bitumen felt underlay to be:
- supported by a continuous fillet to prevent sagging which can form a water trap.
- be securely fixed.

- at vertical laps, be fixed only over rafters, and at horizontal laps be held in place by battens. Where no batten is provided over a horizontal lap, the underlay manufacturers guidance should be sought.
- be cut neatly to fit tightly around service penetrations and not be torn, i.e. where pipes project through the underlay,
- be dressed into the gutter where exposed at eaves level, be UV resistant or of type SU felt.

- Where traditional mortar pointing is used to bed ridge tiles, extend over ridge, continue over hips to form a 150mm minimum lap parallel with the hip rafter, - at abutments, be supported and turned up by a minimum of 100mm.
- be draped to allow water to drain behind the tiling battens.

New opening to masonry wall with suitable lintel and new vertical hardwood painted 6 over 6 sliding sash window to match existing mouldings.

Note:
Window size to match existing adjacent main house windows



- INSULATING LIME RENDER SPECIFICATION ECCOCORK**
- Ensure any structural repairs or deep dubbing out is completed before application of the eccoCORK system to give a reasonably true surface.
- Apply a hand haired coat of @ 3 mm to provide a physical key for the eccoCORK coat.
 - Allow to cure for 24 - 48 hours.
 - A day or two after the has been applied, apply the at a thickness of up to 20 mm, incorporating a 4 mm bedded in between to minimise the possibility of cracking (i.e. 2 x 10 mm passes wet on wet) . This is floated up with a plastic float, usually on the same day, to compress and flatten the surface to the desired shape to prepare for the . Allow to cure for 4 to 7 days.
 - Let the eccoCORK harden for a few days before applying a final coat of at approximately 4 mm thick (2 x 2 mm passes) . Apply the second 2 mm coat soon after the first 2 mm coat has been applied and is still drying.
 - If you are applying eccoCORK internally, an additional top coat of traditional or clay plaster can be applied for a fine finish. Whilst the top coat must be left to cure and dry for at least 14 days before painting, the SecITeK Silicate Primer and Paint can typically be applied fairly soon after this period depending on the weather and protection afforded to the finished render.
 - We strongly advise the use of followed by a minimum of 2 coats of externally as a protective finish on eccoCORK.
- We recommend you apply primer and paint by brush to ensure that an adequate thickness has been applied. If using a roller you may require additional coats of paint to ensure the same consumption has been applied.

WINDOW REPLACEMENT WORKS

All windows indicated with an associated window reference number [format wx.x] are to be carefully removed and replaced with new painted timber flush casement double glazed windows and all to match the existing window design in terms of glazed panel sizes.

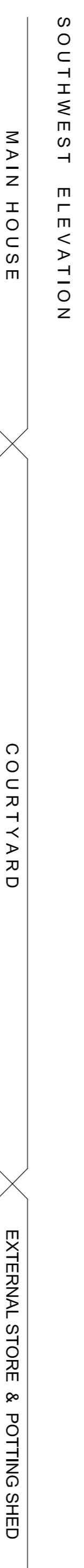
Note 1:
Conservation double glazed units to be used.

Note 2:
Refer to window drawing W_10 for typical details.

Existing slate roof tiles and timber fixing battens to be carefully removed entirely and set to one side for re-use. New bitumen felt underlay to then be laid over existing rafters all in accordance with manufacturer's recommendations prior to existing timber battens and roofing tiles being re-installed.
NOTE: To avoid condensation in roof void, adequate ventilation to be provided by means of proprietary eaves and ridge in-line proprietary venting.

Bitumen felt underlay to be:

- supported by a continuous fillet to prevent sagging which can form a water trap.
- be securely fixed.
- at vertical laps, be fixed only over rafters, and at horizontal laps be held in place by battens. Where no batten is provided over a horizontal lap, the underlay manufacturers guidance should be sought.
- be cut neatly to fit tightly around service penetrations and not be torn, i.e. where pipes project through the underlay,
- be dressed into the gutter where exposed at eaves level, be UV resistant or of type SU felt.
- Where traditional mortar pointing is used to bed ridge tiles, extend over ridge, continue over hips to form a 150mm minimum lap parallel with the hip rafter, - at abutments, be supported and turned up by a minimum of 100mm.
- be draped to allow water to drain behind the tiling battens.



INSULATING LIME RENDER SPECIFICATION ECCOCORK

Ensure any structural repairs or deep dubbing out is completed before application of the eccoCORK system to give a reasonably true surface.

- Apply a hand haired coat of @ 3 mm to provide a physical key for the eccoCORK coat.
 - Allow to cure for 24 - 48 hours.
 - A day or two after the has been applied, apply the at a thickness of up to 20 mm, incorporating a 4 mm bedded in between to minimise the possibility of cracking (i.e. 2 x 10 mm passes wet on wet) . This is floated up with a plastic float, usually on the same day, to compress and flatten the surface to the desired shape to prepare for the . Allow to cure for 4 to 7 days.
 - Let the eccoCORK harden for a few days before applying a final coat of at approximately 4 mm thick (2 x 2 mm passes) . Apply the second 2 mm coat soon after the first 2 mm coat has been applied and is still drying.
 - If you are applying eccoCORK internally, an additional top coat of traditional or clay plaster can be applied for a fine finish. Whilst the top coat must be left to cure and dry for at least 14 days before painting, the SecITeK Silicate Primer and Paint can typically be applied fairly soon after this period depending on the weather and protection afforded to the finished render.
 - We strongly advise the use of followed by a minimum of 2 coats of externally as a protective finish on eccoCORK.
- We recommend you apply primer and paint by brush to ensure that an adequate thickness has been applied. If using a roller you may require additional coats of paint to ensure the same consumption has been applied.

