

GENERAL

WATER SUPPLY RESTRICTIONS

If the water supply is, or is likely to be restricted, advise Client and do not carry out planting or seeding until instructed. If planting or seeding has been carried out, obtain instructions on watering.

SUPPLY & HANDLING OF TREES & PLANTS

Comply with the National Plant Specification and the Code of Practice for Plant Handling (CPSE) which is incorporated in the National Plant Specification. Comply with Nurseries, Retailers and Landscapers - Biosecurity Best Practice Protocols. All plants delivered to site shall be clearly and durably labelled with exact genus, species, cultivar and supplier. Where plants are grouped one label is to be retained in place on completion of the work.

SEASONS: Undertake planting in the following seasons unless the agreed programme indicates otherwise: deciduous plants: beginning November to end March. Evergreen plants: October/November or April, grass and wildflower seeding: March/April or September/October

Bulbs: when available depending on species, usually in Autumn or Spring

WEATHER AND SOIL CONDITIONS

Undertake soft landscape works generally in open weather conditions, typically mild, dull and moist. Do not undertake planting seeding or turfing when the temperature is below 4°C when the ground is covered in snow, in frozen or waterlogged ground or in drought conditions.

PLANT FAILURES: all plants supplied and planted by the Contractor including trees, which fail to thrive within 12 months shall be replaced with the same species to match the size of adjacent plants of the same species at the next suitable planting season, unless otherwise agreed, per required to ensure continuing healthy growth until the consultant certifies the work is finished.

TURFING

TURF QUALITY: To BS 3969 with herbicide applied 1 to 3 months before lifting: 900 x 300 minimum size, even thickness, max 10mm thick thatch and 7-18mm thick topsoil. Delivery phased to ensure laying within 48 hours of lifting. Stacks not to exceed 1.4m high. Ensure turves do not dry out.

GRADIENTS AND LEVELS: Conform to the spot heights or contours on drawings and ensure that falls are even without humps or hollows. Unless otherwise specified final levels after settlement are to be 20mm above any adjacent paving. See also specification clause B245

PREPARATION FOR TURFING: Remove all weeds, rubbish and stones over 30mm in any dimension. Cultivate topsoil to a minimum depth of 100mm. Reduce top 30mm to a fine fillth and on clay or heavy loam soils work in 50% of coarse sharp sand to produce a 60mm layer.

FERTILISER: Dress areas to be turfed with N7:P7:K7 fertiliser at a rate of 50g/m². Work into the top 30mm of fillth 7 days before turfing and water in well.

LAYING TURF: Transport turf over close butted timber planks. Lay turf in consecutive rows. Lay turf from timber planks protecting previously laid turf, lay turf close butted breaking the joint in alternate rows, use only whole turves at margins, consolidate lightly with wooden beaters, brush in finely sieved topsoil to fill all joints, peg turfs with wooden pegs on slopes exceeding 30°, Ensure final surface is 20mm above any adjacent hard surface.

SHRUBS, HERBACEOUS AND GROUND COVER PLANTS:

NURSERY STOCK: in accordance with the plant list and as specified in the National Plant Specification (available free at www.gohelios.co.uk). All plants shall have been grown in peat free growing media. Conform to the spot heights or contours on drawings and ensure that falls are even without humps or hollows. Unless otherwise specified final levels after settlement are to be 20mm above any adjacent paving. See also specification clause B245.

PREPARATION FOR PLANTING: Apply herbicide if required Rotovate ground to a minimum of 250mm deep and remove stones over 50mm in any dimension. Remove existing unwanted plants including their roots.

ORGANIC MATTER: apply and lightly dig into the surface of planting areas, one of the following to be agreed: well rotted farmyard manure at a rate of 5kg/m², concentrated bagged animal manure or composted green waste complying with BS1 PAS 100 from an agreed supplier

FERTILISER: incorporate bonemeal in planting areas at the rate of 70gm/m² into the topsoil

PREPARATION OF PLANTS: Remove inorganic containers. Check for and reject any damaged, diseased, poorly rooted, pot-bound, pest infested, wrongly identified plants, or plants not complying with all the requirements of the plant list (unless previously agreed). Carefully prune any minor root damage.

WATERING BEFORE PLANTING: If soil is dry, thoroughly water 48 hours before planting. Saturate the root ball of container grown and rootballed plants before planting.

PLANT: Set out plants at required densities in groups indicated on the landscape drawings. Adjust accordingly where bed sizes have changed, make notes and notify consultant to as built changes.

MULCHING: Fork soil to a medium fillth in the areas to be mulched. Apply 75 mm of medium grade bark mulch after watering to prior client/consultant sample approval.

TREES
TREE QUALITY, SIZE AND TYPE: in accordance with the plant list and as specified in the National Plant Specification. Comply with Nurseries, Retailers and Landscapers - Biosecurity Best Practice.

TREE STAKES: 75mm minimum diameter, free of bark, with one end pointed.

TREE TIES AND SPACERS: Type: Greenblue urban naturlife hessian strapping to manufacturers methodology

STAKING FOR BAREROOT AND BAGGED TREES: Drive stake upright 600mm into bottom of excavated planting pit before planting, close to the tree stem on the windward side. Cut off at 600mm above ground and secure tree with ties and spacers at the top of the stake.

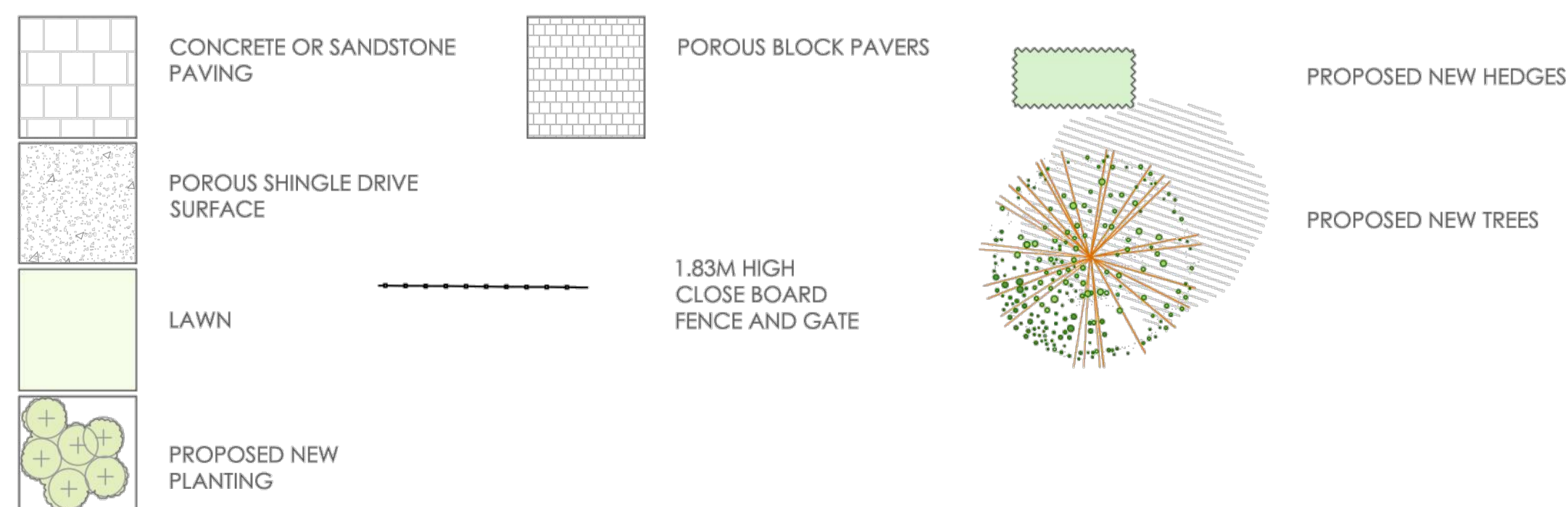
STAKING FOR ROOTBALLED AND CONTAINER TREES: Drive 2 stakes upright 600mm into bottom of excavated planting pit 600mm apart, before planting, either side of the rootball in line with the prevailing wind. Cut off at 600mm high above ground level and after planting secure tree with loops of webbing secured at the top of the stake to hold the tree vertical.

TREE PIT PREPARATION: To pits in planting areas, shortly before planting: incorporate organic matter around surface and root-ball to 100mm depth and mix lightly with soil, incorporate fertiliser at the planting area rate in accordance with specification clause.

PREPARATION OF TREES: Remove inorganic containers or root-ball support materials. Check for and reject any damaged, diseased, poorly rooted, pot-bound, pest infested, wrongly identified plants, or plants not complying with all the requirements of the plant list (unless previously agreed) Carefully prune any minor root damage. Water root-ball thoroughly water 24 hours before planting. Saturate the root ball of container grown and root-balled plants before planting.

PLANT TREES: Plant in previously prepared tree pits to inset drawing details 1& 2. In locations shown on the drawings or in positions agreed separately with client and noted for consultant, in holes large enough to allow adequate root spread or 150mm wider all round root-ball, break up bottom of hole, cut back any damaged roots to sound growth.

KEY



HEDGE PLANTING

NR	PLANT	SIZE
25	Prunus lusitanica	125-150cm rb
16	Carpinus betulus	150-180cm rb

BOUNDARY PLANTING

NR	PLANT	SIZE
5	Hebe Kirkii	
3	Caryopteris x clandonensis	5ft 30-40cm Bushy:CG
3	Calliandra bodinieri	5ft 50-60cm Bushy:CG
3	Cornus alba	10ft 90-120cm Bushy:CG
4	Eleagnus pungens	10ft 75-100cm Bushy:CG
7	Escallonia ivelyi	10ft 75-100cm Bushy:CG
5	Hebe Kirkii	10ft 50-60cm Bushy:CG
5	Ligustrum ovalifolium	10ft 90-120cm Bushy:CG
2	Viburnum opulus Xanthocarpum	10ft 90-120cm Bushy:CG

TREE PLANTING SCHEDULE

NR	PLANT	SIZE
1	Prunus padus Albertii	175-200cm Feathered or low branching
3	Crataegus monogyna	12-14cm girth Heavy standard 200 clear stem RB 300-350cm ht
3	Acer campestre	14-16cm girth Extra Heavy std 200 clear stem RB 400-450cm ht

landscape connection

99a High Street, Great Missenden, Bucks. HP16 0BB
01494 729991 www.landscapeconnection.co.uk

CLIENT C/O EMMA BRACE ARCH DESIGN
REVISIONS A Fence removed 19-12-23

SITE PRIMROSE BUNGALOW HP4 1RQ

DRAWING LANDSCAPE PLAN

DATE 16-11-23

DRWG NR LC-2934-01

SCALE 1:100 @ A1

ISSUE PLANNING