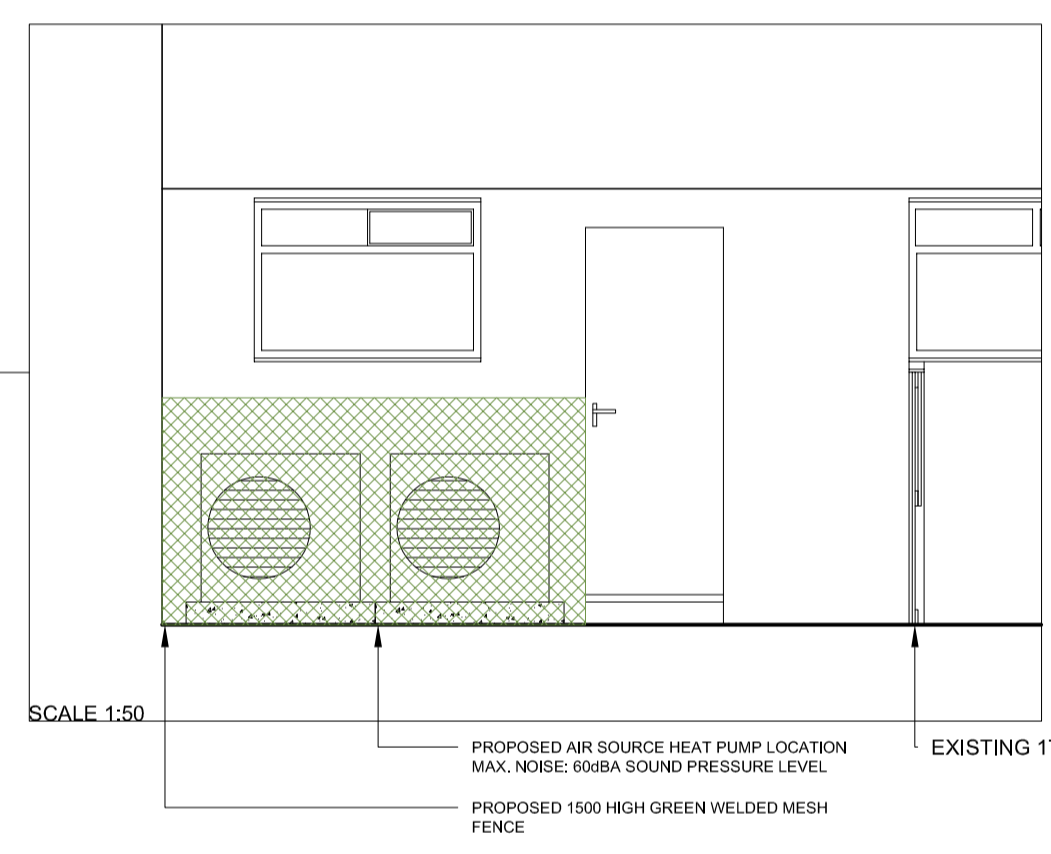


- DRAWING NOT TO BE SCALED
- REPORT ERRORS & OMISSIONS TO D3-ASSOCIATES
- CHECK ALL DIMENSIONS ON SITE
- TO BE READ IN CONJUNCTION WITH HEALTH AND SAFETY PLAN AND ALL RELEVANT RISK ASSESSMENTS



EAST



AIR SOURCE HEAT PUMP SYSTEM TO COMPRISE 1 OR 2 NO. OUTDOOR UNIT CONNECTED TO 2 NO. INDOOR UNITS.
 THE INDOOR UNITS SHALL BE CEILING CASSETTE TYPE UNITS WITH A NOMINAL HEATING CAPACITY OF 10 kW EACH (MITSUBISHI OR EQUAL APPROVED), SUSPENDED FROM PURPOSE MADE SUPPORT SYSTEM TO BE INTEGRATED INTO A NEW SUSPENDED CEILING (BY OTHERS) AND THE OUTDOOR UNIT SHALL BE THE STANDARD INVERTER TYPE MOUNTED ON PAVING SLABS OR LIKE, INCLUDING A GREEN, STEEL MESH SECURITY ENCLOSURE ALLOWING FREE PASSAGE OF AIR.

EXISTING 1700 HIGH TIMBER PICKET FENCE

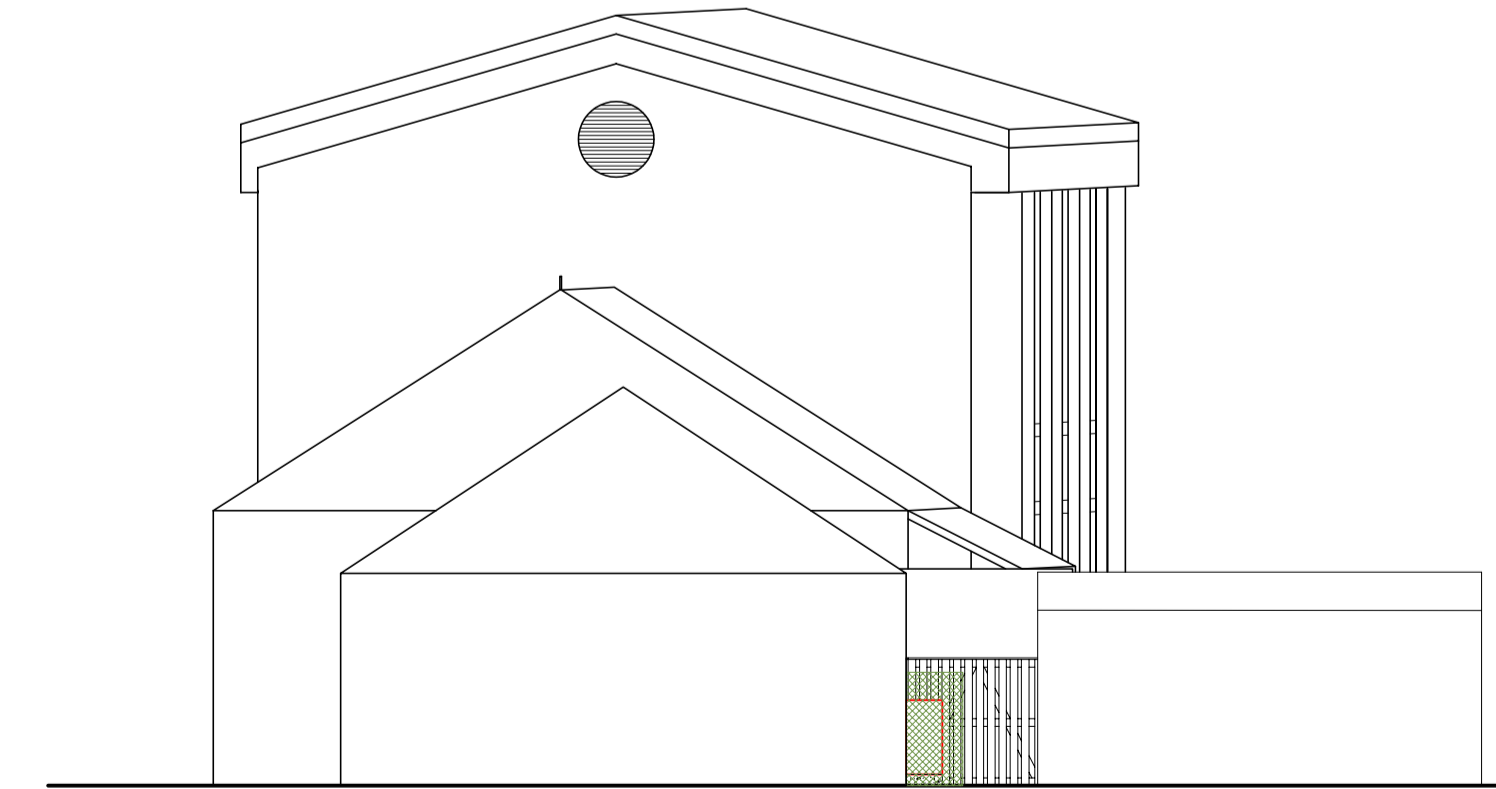


NORTH



WEST

WINDOWS ON WESTERN ASPECT TO BE UPGRADED FROM SINGLE GLAZED TIMBER TO DOUBLE GLAZE UPVC TO MATCH EXISTING ON CAR PARK SIDE



SOUTH

REV	DESCRIPTION	JA	SB	ISSUED	CHECKED	DATE
P05	REISSUED FOR PLANNING FOLLOWING COMMENTS	JA	ST	18/03/24		
P04	ISSUED FOR PLANNING FOLLOWING COMMENTS	JA	ST	04/03/24		
P03	ISSUED FOR TENDER	JA	GR	26/02/24		
P02	DRAWING NUMBER UPDATED, ISSUED FOR PLANNING	JA	GR	19/02/24		
P01	FIRST ISSUE	JA	SB	29/11/23		

PURPOSE OF ISSUE
PLANNING

PROJECT INFORMATION
NE & Y NET ZERO HUB - HUTTON CRANSWICK METHODIST CHURCH

DRAWING INFORMATION
PROPOSED ELEVATIONS

PROJECT NO.	DRAWN	SCALE @ A1	STATUS	REVISION
1838-HCR-D3A-00-XX-DR-A	JA	1:100	S2	3600
1838	JA	1:100	S2	P05

