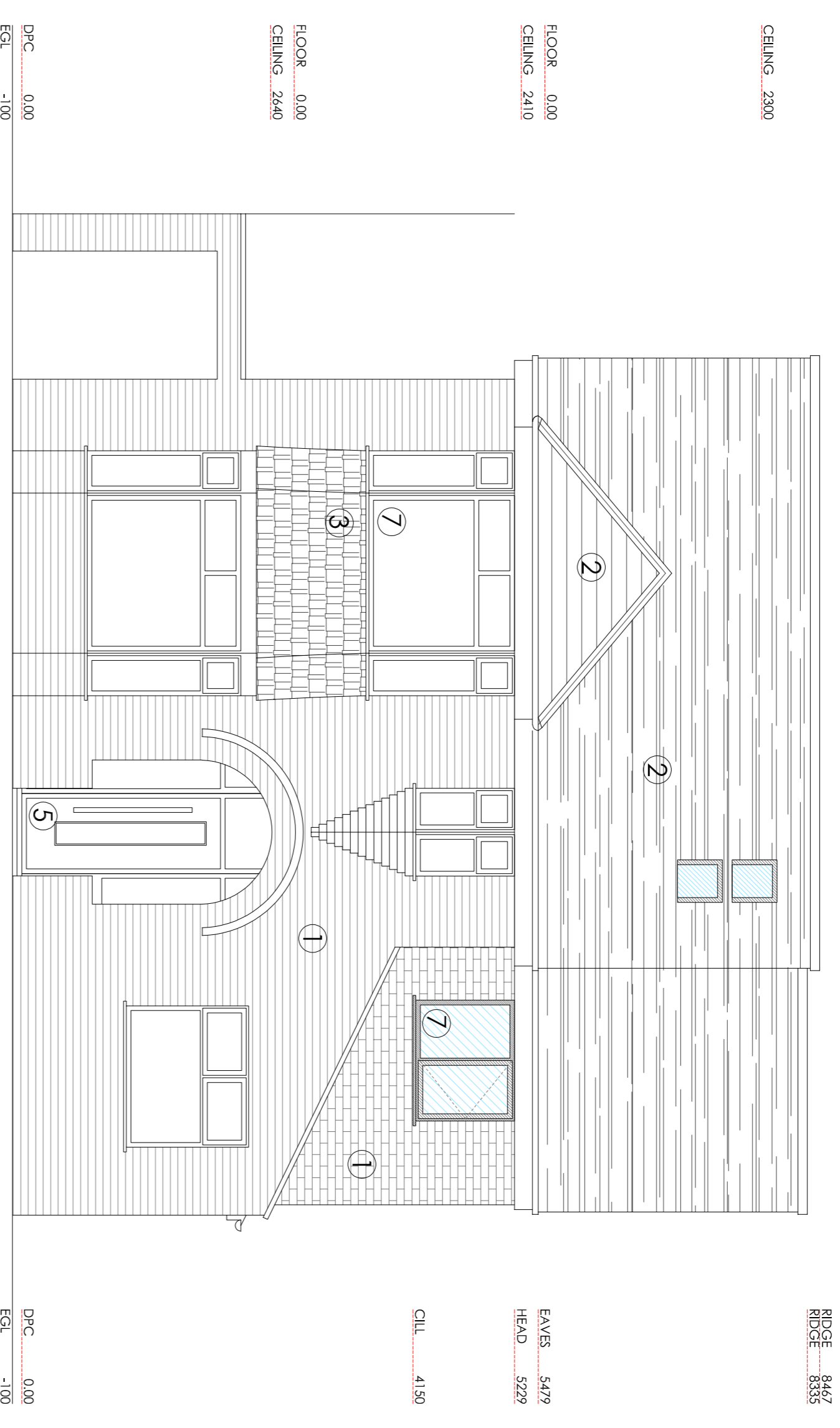
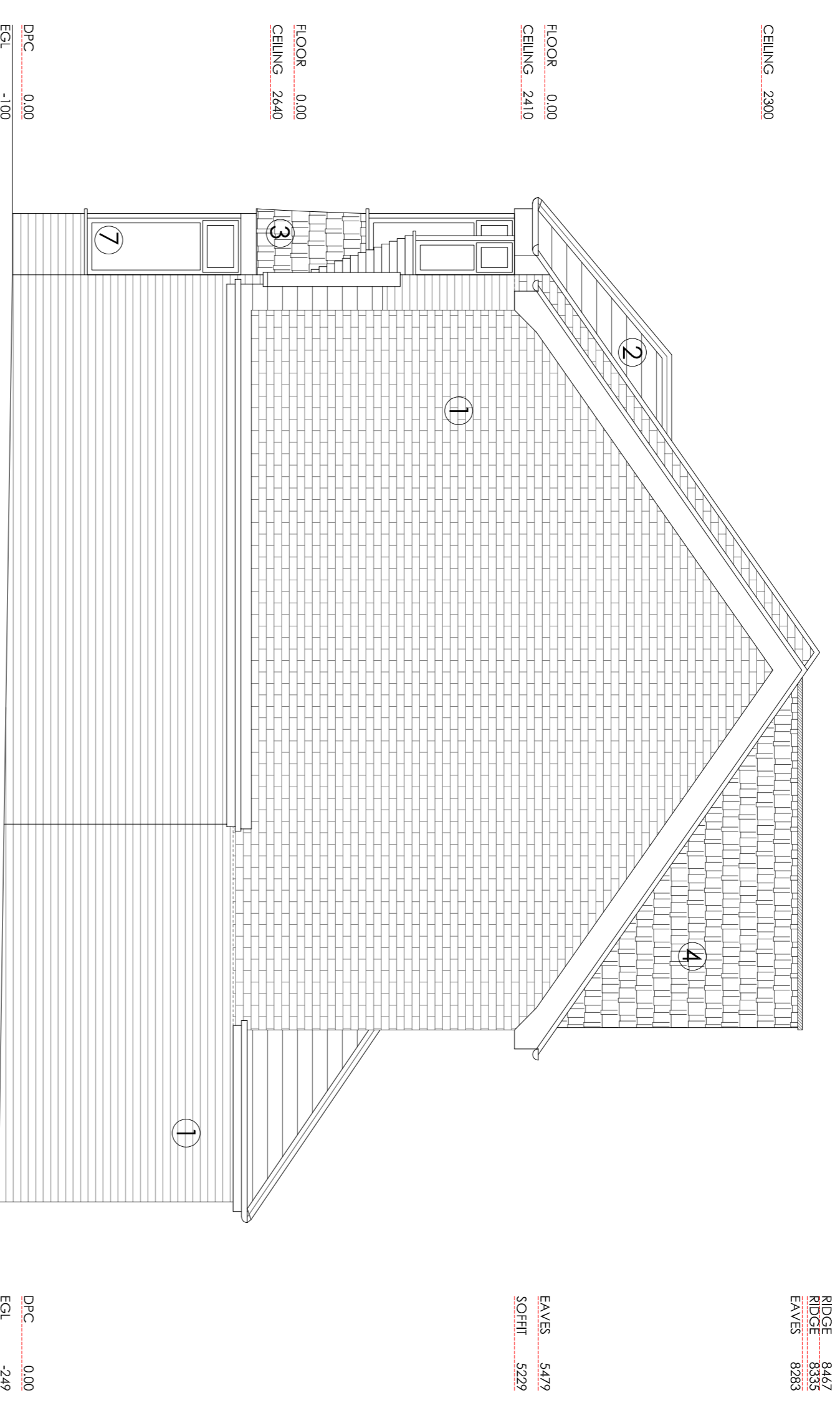


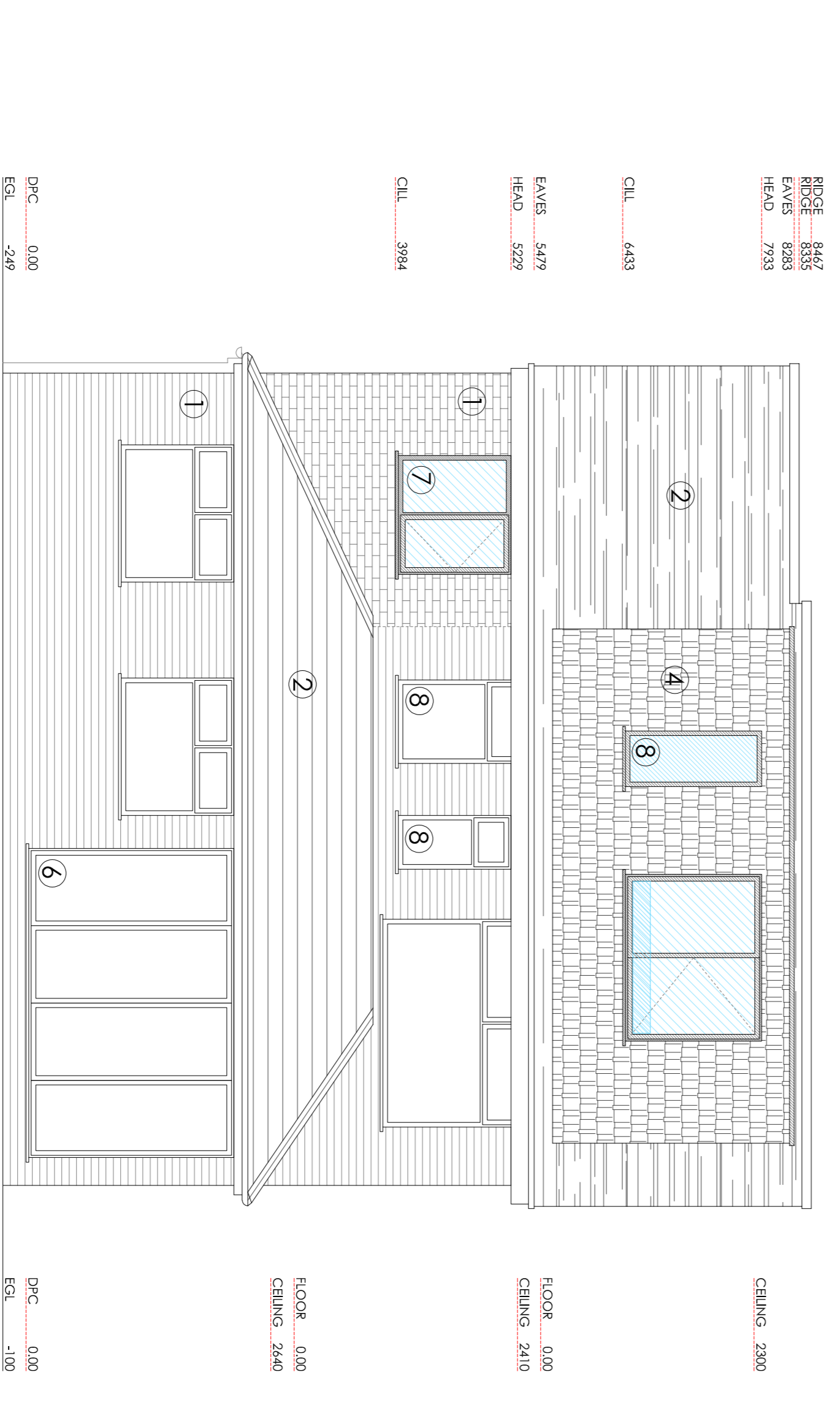
- ① FACING BRICK
- ② MARLEY ROOF TILE
- ③ ROSEMARY HANGING TILE
- ④ GREY HANGING TILE
- ⑤ BLACK COMPOSITE TILE
- ⑥ BLACK ALUMINIUM B-FOLD DOOR
- ⑦ BLACK UPVC WINDOWS
- ⑧ SATIN GLASS



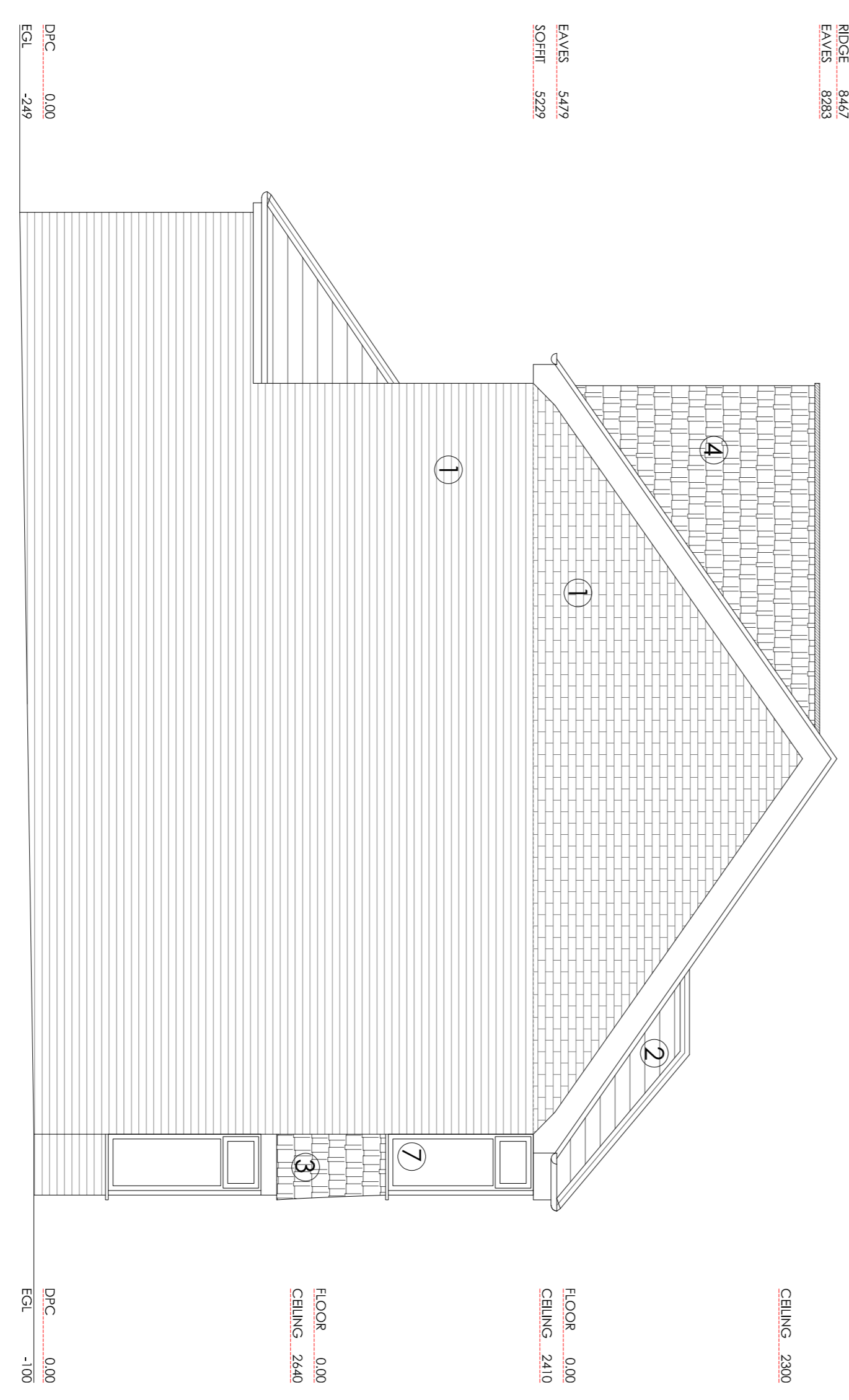
FRONT ELEVATION (NE)



SIDE ELEVATION (NW)



REAR ELEVATION (SE)



SIDE ELEVATION (SW)

