

External Materials

Land adjacent to 6 Southernhay, Basildon, Essex, SS14 1EL



DESIGNING RESIDENTIAL COMMUNITIES

Table of Contents

Introduction	1
Proposed Materials	2
Facade	3
Roofing	10
Enclosure at Residential Entrance Area	14
Hardscaping.....	16

Introduction

This document presents 'details of all external materials including hard surfacing', as well as 'fencing walling and other means of enclosure' to be used for the proposed development at **Land adjacent to 6 Southernhay, Basildon, Essex, SS14 1EL** seeking approval for reserved matters with regards to application **23/00203/OUT** which proposes a part 3/part 4 storey building comprising 9 residential flats (5x 1-bed and 4 x 2-bed) with ground floor commercial floor space.

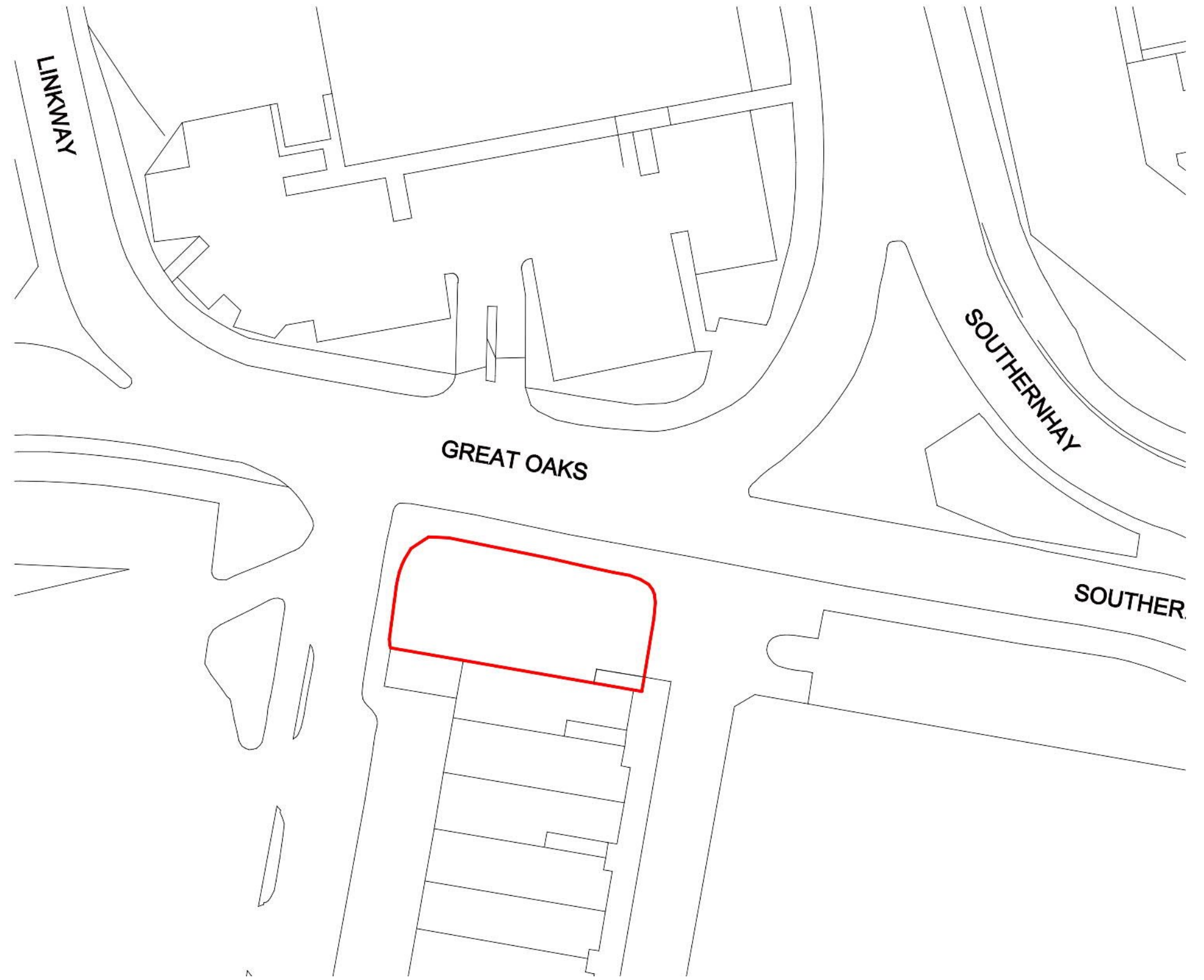
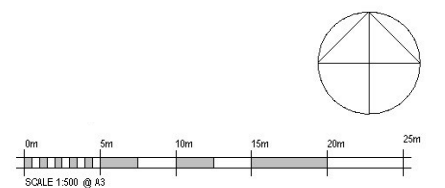


Fig 1.1: Site Block Plan 1:500 @ A3



Proposed Materials

Façade

1. Brickwork

Ibstock Cooksbridge Yellow Clamp Stock A4512A, Medium Grey Mortar

2. Render

Polar White Silicone Based Finishing Render

3. Windows and Doors

Double Glazed Aluminium Frame, Powder Coated in RAL 8070

4. Cycle/Bin Store Door

Single Metal Louvred Door, Powder Coated in RAL 8070

5. Balconies

Steel Vertical Railing System, Powder Coated in RAL 8070

6. Swift Boxes

Colour and finish to match Polar White render

7. Bat Boxes

Colour and finish to match Polar White render

Roofing

8. Coping

Aluminium, Powder Coated in RAL 8070

9. Photovoltaic Panels

Ballasted Roof Mount Solar Panels in Black

10. Green Roof

Biodiverse Wildflower Green Roof System
(Refer to Landscape Design for additional details)

11. Roof Membrane

Single Ply PVC Membrane Roofing System

Enclosure at Residential Entrance Area

(Refer to Landscape Design for additional details)

12. Railing

1200mm high metal flat top railing in RAL 9004

Hard Surfacing

(Refer to Landscape Design for additional details)

13. Paving 1

Light Grey Pixelated Plaza Paving Blocks

14. Paving 2

Mid/Dark Grey Concrete Sett Paving Blocks



Fig 2.1: North Elevation Render



Fig 2.2: East Elevation Render

Facade

1. Brickwork

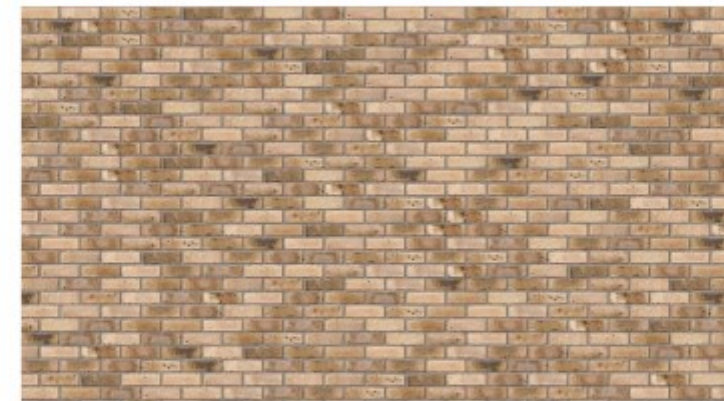
Product

Ibstock Cooksbridge Yellow Clamp Stock A4512A, Medium Grey Mortar

Cooksbridge Yellow Clamp Stock



Ibstock
At the heart of building



Product Information

Ibstock Code:	A4512A
Type:	Stock
Facing Description:	Sandfaced
Dry Brick Weight (kg):	2.2kg
Pack Quantity:	370
Packaging (standard):	Banded (Plastic)
Factory:	Chailey

Technical Specification (to BS EN 771-1)

Brick Dimensions (L x W x H mm):	215x102x65
Size Tolerances Mean & Range:	T1 R1
Configuration:	Single Frog
Voids (%):	5-10
Compressive Strength (N/mm ²):	12.5
Active Soluble Salts:	S2
Water Absorption (% weight):	12
Durability:	F2
Gross Dry Density (Sound Insulation) (Kg/m ³):	1560
Equivalent Thermal Conductivity "K" value 5% Exposed:	0.82
Initial Rate of Absorption (Suction Rate) (Kg/m ² /min):	0.9
EAN:	5036335035368

WITEM CATEGORY	WALLS
DESCRIPTION	IBSTOCK Cooksbridge Yellow Clamp Stock A4512A, Medium Grey Mortar
COLOUR	LIGHT YELLOW
MATERIAL	MASONRY

Fig 3.1: IBSTOCK Cooksbridge Yellow Clamp Stock



Fig 4.1: Polar White Render Example



Fig 4.2: Polar White Render Example



Fig 4.3: Polar White Colour Sample

2. Render

Product

Polar White Silicone Based Finishing Render

ITEM CATEGORY	FACADE
DESCRIPTION	POLAR WHITE SILICONE BASED FINISHING RENDER
COLOUR	POLAR WHITE
FINISHING TEXTURE	FINE
MATERIAL	SILICONE BASED

Facade

3. Windows and Doors

Product

Double Glazed Aluminium Frame, Powder Coated in RAL 8070 Windows and Doors

WITEM CATEGORY	WINDOWS AND DOORS
DESCRIPTION	DOUBLE GLAZED ALUMINIUM FRAME, POWDER COATED WINDOWS AND DOORS
COLOUR	RAL 8070
FINISH	POWDER COAT RAL 8070
MATERIAL	ALUMINIUM



Fig 5.1: Double Glazed Aluminium Window

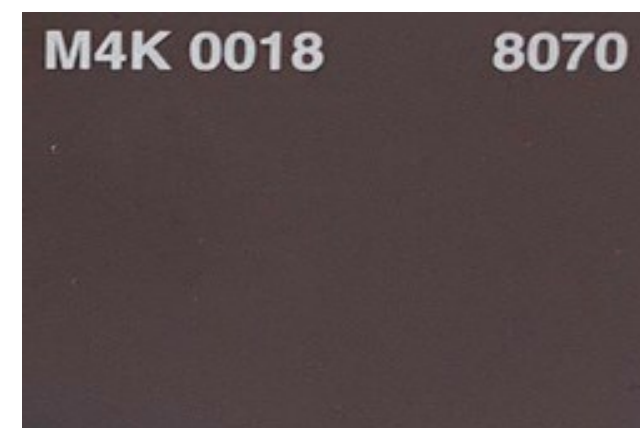


Fig 5.2: RAL 8070 Sample



Fig 6.1: External Metal Louvre Doors



Fig 6.2: RAL 8070 Sample

4. Cycle / Bin Store Door

Door assigned to cycle store, residential and commercial bin store

Product

Single Metal Louvred Door, Powder Coated in RAL 8070

WITEM CATEGORY	CYCLE/BIN STORE DOOR
DESCRIPTION	SINGLE METAL LOUVRED DOOR, POWDER COATED IN RAL 8070
COLOUR	RAL 8070
FINISH	POWDER COAT RAL 8070
MATERIAL	METAL

Facade

5. Balconies

Product

Steel Vertical Railing System, Powder Coated Finish, RAL 8070

ITEM CATEGORY	ENCLOSURE
DESCRIPTION	STEEL VERTICAL RAILING SYSTEM, POWDER COATED FINISH
COLOUR	RAL 8070
FINISHING TEXTURE	POWDER COAT RAL 8070
MATERIAL	STEEL

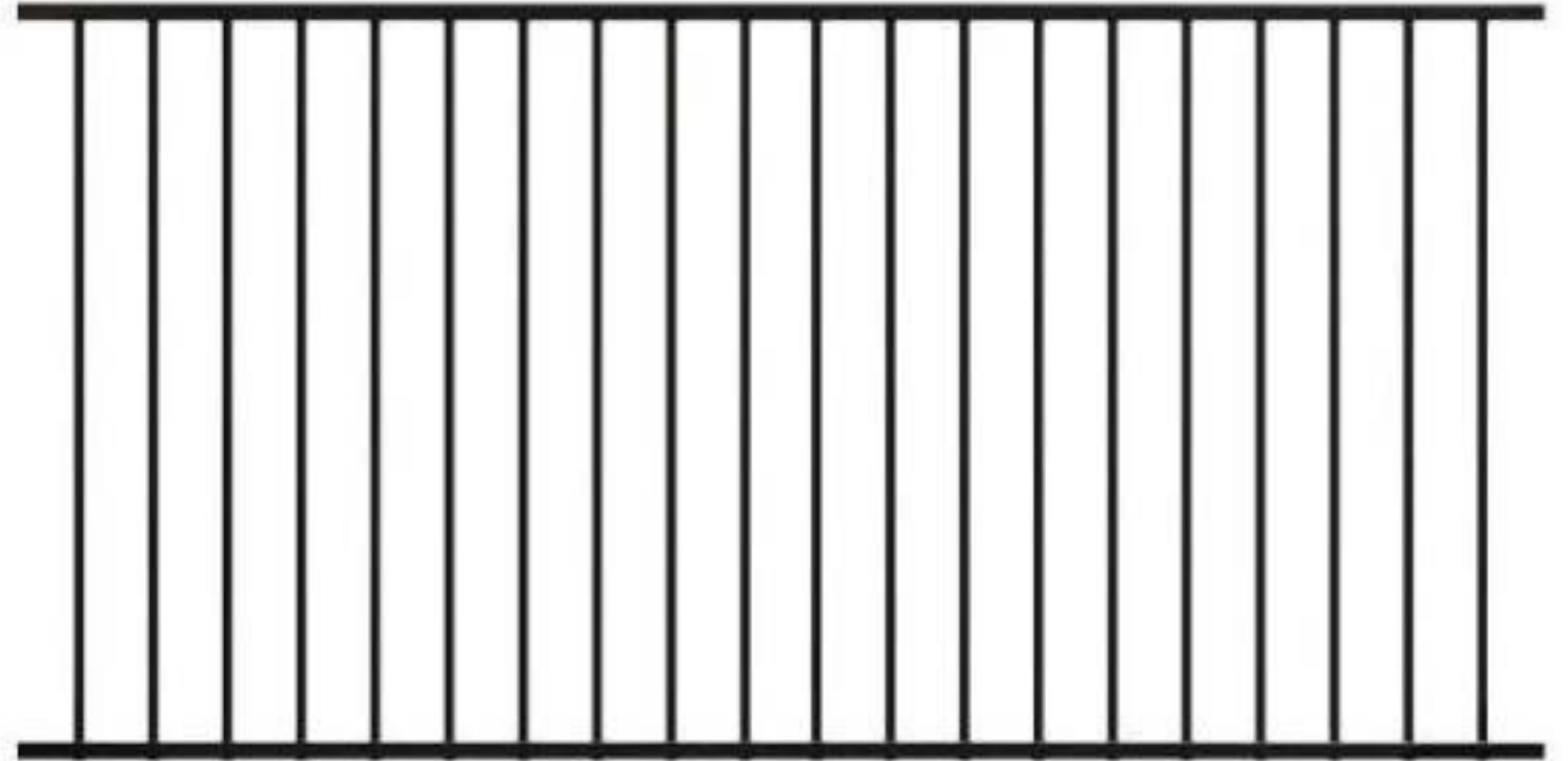


Fig 7.1: Vertical Railing System



Fig 7.2 RAL 8070 Sample



Fig 8.1: Swift Box Example



Fig 8.2: Polar White Colour Sample

6. Swift Boxes

Product

Swift Box Unit, colour and finish to match Polar White Render Wall.

See Biodiversity Enhancement Strategy for additional details.

ITEM CATEGORY	FACADE
DESCRIPTION	SWIFT BOX UNIT, COLOUR AND FINISH TO MATCH POLAR WHITE RENDER WALL
COLOUR	POLAR WHITE
FINISHING TEXTURE	TO MATCH RENDER WALL

Facade

7. Bat Boxes

Product

Bat Box Unit , colour and finish to match Polar White Render Walls

See Biodiversity Enhancement Strategy for additional details.

ITEM CATEGORY	FACADE
DESCRIPTION	BAT BOX UNIT , COLOUR AND FINISH TO MATCH POLAR WHITE RENDER WALLS
COLOUR	POLAR WHITE
FINISHING TEXTURE	TO MATCH RENDER WALL



Fig 9.1: Bat Box Example



Fig 9.2: Polar White Colour Sample



Fig 10.1: Aluminium Coping

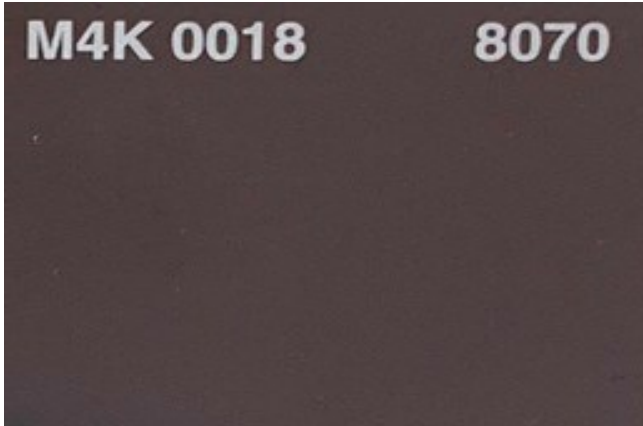


Fig 10.2: RAL 8070 Sample

8. Coping

Product

Aluminium, Powder Coated in RAL 8070

ITEM CATEGORY	ROOFING
DESCRIPTION	ALUMINIUM POWDER COATED IN RAL 8070
COLOUR	RAL 8070
FINISH	POWDER COAT N RAL 8070
MATERIAL	ALUMINIUM

Roofing

9. Photovoltaic Panels

Product

Ballasted Roof Mount Solar Panels in Black

ITEM CATEGORY	ROOFING
DESCRIPTION	BALLASTED ROOF MOUNT SOLAR PANELS
COLOUR	BLACK



Fig 11.1 Ballasted Roof Mount Solar Panels



Fig 11.2: Black Colour Sample



Fig 12.1 Biodiverse Wildflower Green Roof System

10. Green Roof

Product

Biodiverse Wildflower Green Roof System

See Landscape Design for additional details.

ITEM CATEGORY	ROOFING
DESCRIPTION	BIODIVERSE WILDFLOWER GREEN ROOF SYSTEM
MATERIAL	VARIOUS

Roofing

11. Roof Membrane

Product

Single Ply PVC Membrane Roofing System

ITEM CATEGORY	ROOFING
DESCRIPTION	SINGLE PLY MEMBRANE ROOFING SYSTEM
COLOUR	GREY
MATERIAL	POLYVINYL CHLORIDE (PVC)



Fig 13.1 Single PVC Membrane Roofing System

Enclosure at Residential Entrance Area

The scheme consists of one enclosure which surrounds the residential entrance area shown in Figure 14.1 and 14.2

Material details of this enclosure are highlighted on the following page.

See Landscape Design for additional details.

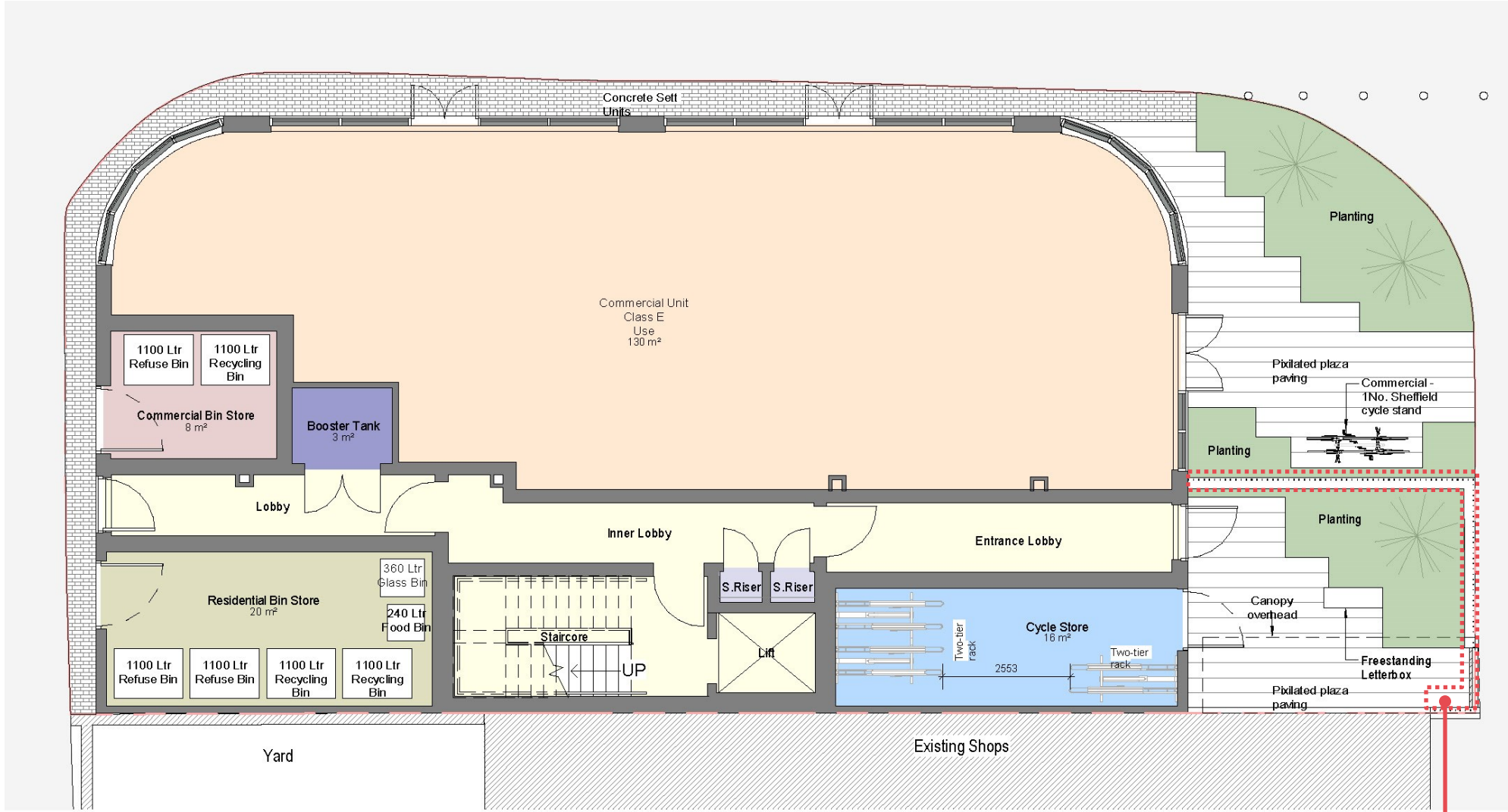


Fig 14.1: Ground Floor Plan

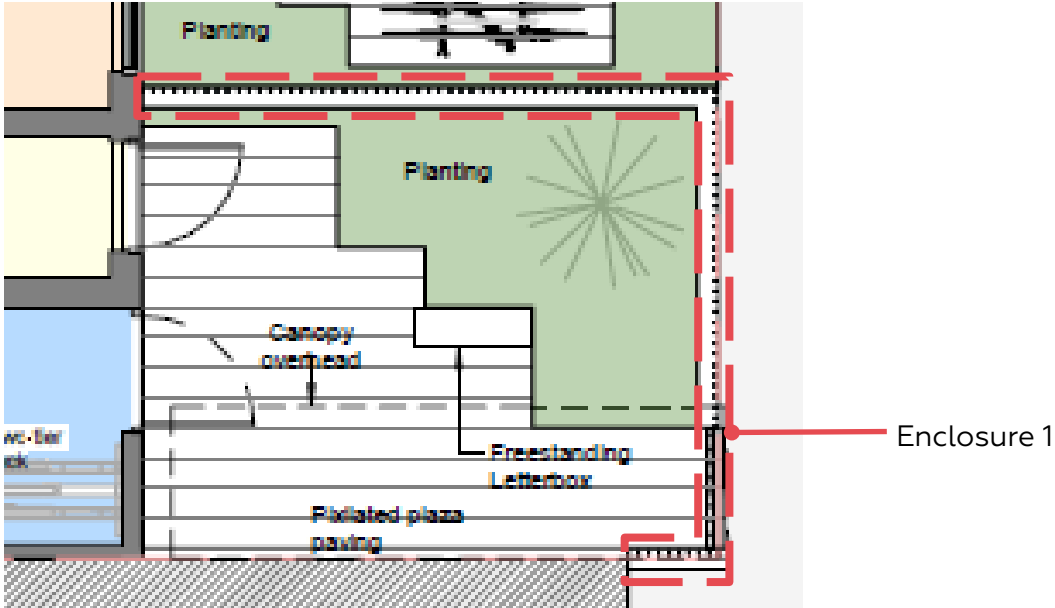


Fig 14.2: Enclosure Details

Enclosure at Residential Entrance Area

12. Enclosure 1—Metal Railing

Product

1200mm high metal flat top railing in RAL 9004

See Landscape Design for additional details

ITEM CATEGORY	ENCLOSURE
DESCRIPTION	1200MM HIGH METAL FLAT TOP RAILING IN RAL 9004
COLOUR	RAL 9004
MATERIAL	METAL



Fig 15.1: Metal flat top railing in RAL 9004



Fig 15.2: RAL 9004 Sample

13. Paving 1

This paving type is assigned to the residential entrance area as illustrated in Figure 16.1

See Landscape Design for additional details

Product

Light Grey Pixelated Plaza Paving Blocks

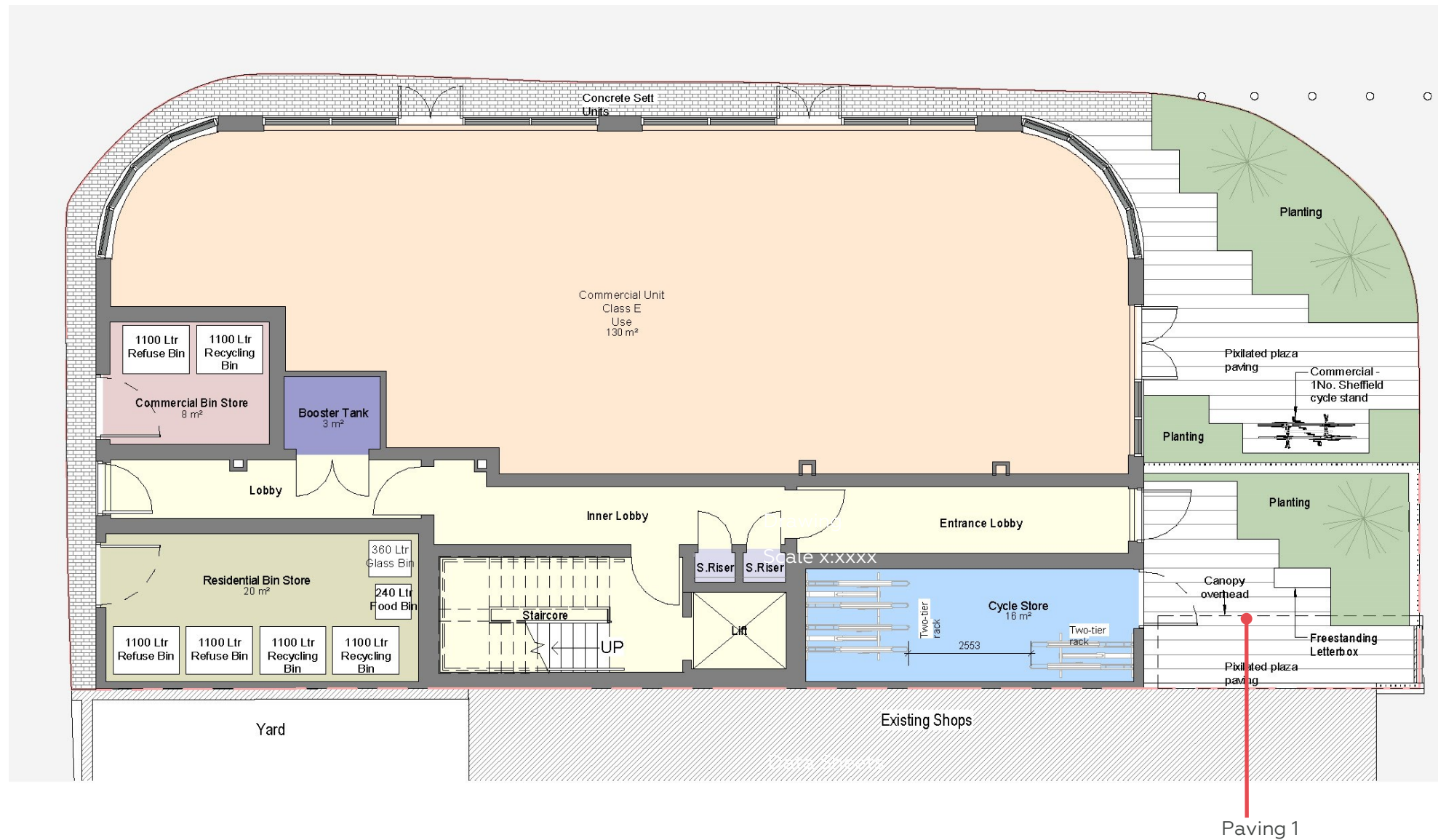


Fig 16.1: Ground Floor Plan

ITEM CATEGORY	HARDSCAPING
DESCRIPTION	LIGHT GREY PIXELATED PLAZA PAVING BLOCKS
COLOUR	LIGHT GREY
MATERIAL	GRANITE



Fig 16.2: Light Grey Pixelated Plaza Paving Blocks

Hardscaping

14. Paving 2

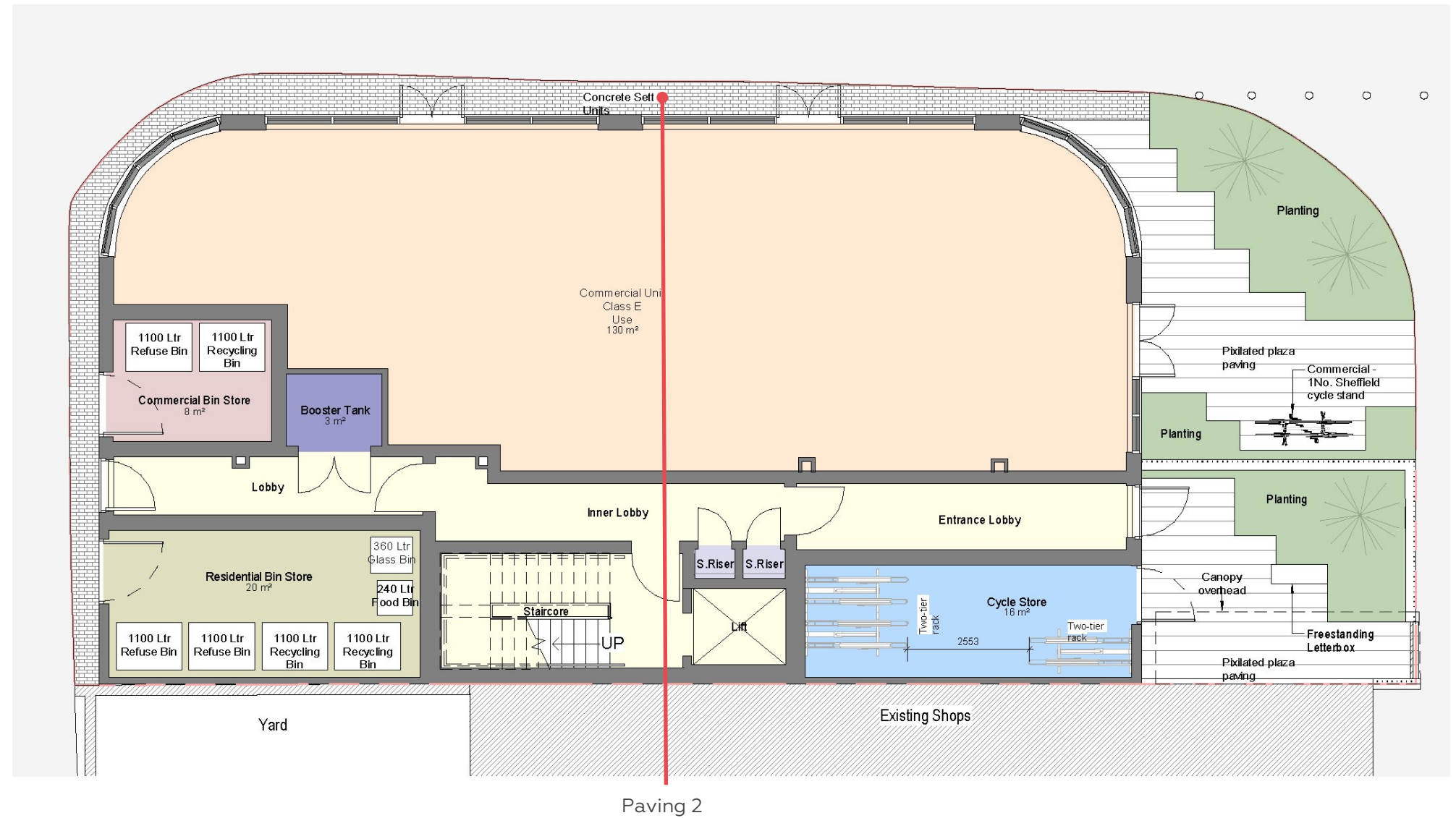
This paving type surrounds the building at the North and West side as illustrated in Figure 17.1

See Landscape Design for additional details

Product

Medium Grey Concrete Setts Paving Blocks

ITEM CATEGORY	HARDSCAPING
DESCRIPTION	GREY CONCRETE SETT PAVING BLOCKS
COLOUR	MEDIUM GREY
MATERIAL	CONCRETE



Paving 2

Fig 17.1: Ground Floor Plan



Fig 17.2: Medium Grey Concrete Setts Paving



DESIGNING RESIDENTIAL COMMUNITIES