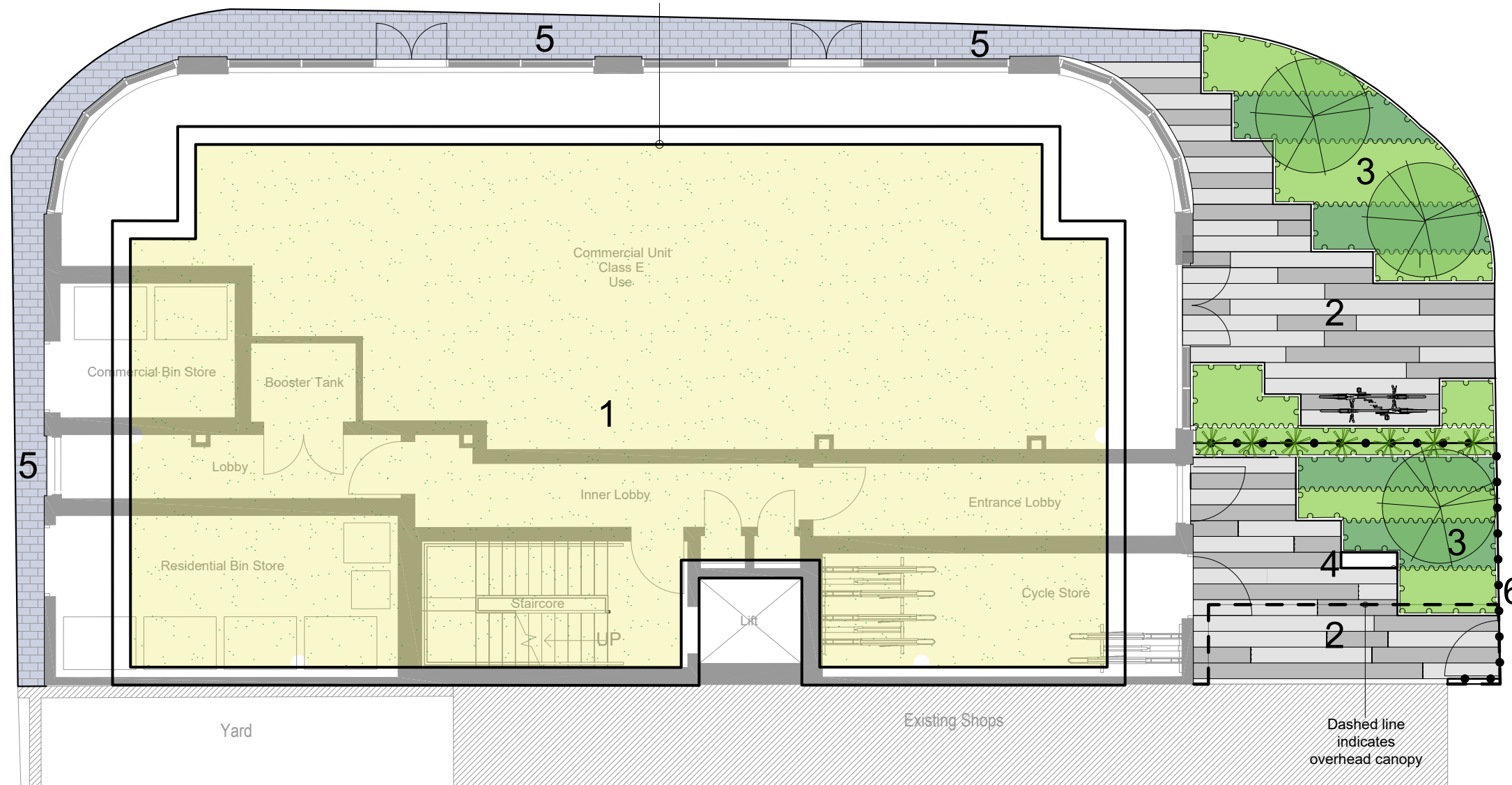
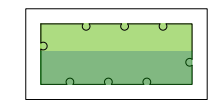
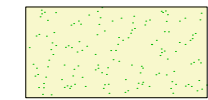
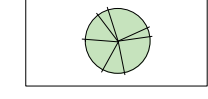
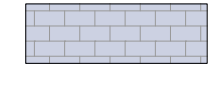
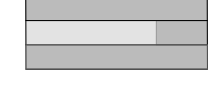


ROOF OUTLINE SHOWN AS  
SOLID BLACK LINE ON-TOP OF  
GROUND FLOOR PLAN



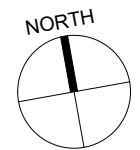
# KEY

-  Planting-Shrub & Herbaceous
-  Biodiverse wildflower
-  Proposed tree
-  Concrete sett units. Colour to match darker units of proposed building. Product type TBA
-  Pixilated plaza paving. Colour tones to be developed - Cool greys. Available from Marshals or similar and approved




Design inspiration '65 Market square'

- 1 Biodiverse Green roof integrated with solar array. Details to be developed. Outline of roof shown via thick black line
- 2 Pixilated 'Plaza' inspired paving - Design inspiration taken from near-by project - '65 Market square'. Space for bicycle stand via Sheffield hoop
- 3 Bands of low defensible planting - RHS 'High pollinators' species to be used
- 4 Letter box concealed within planting to Architects details
- 5 Sett paved concrete blocks to match darker colour of building
- 6 Metal railings define residential area. Lockable gate. All 1.2m high, flat top/black



# LANDSCAPE MASTERPLAN

REV	DESCRIPTION	BY	DATE



Studio Loci  
(Trading name of LDC Ltd)  
The Charcoal House  
GU48NG  
01483 573817  
www.studioloci.eu

Scale @A3	Project Title Southerhay, Basildon
Drawn by AF    Checked by	Client Hermitage Design and Build Ltd
Status <b>PLANNING</b>	Drawing Number 23021-LDC-XX-XX-DR-L-0001
Drawing Number internal 10505-GA-01	Revision C1