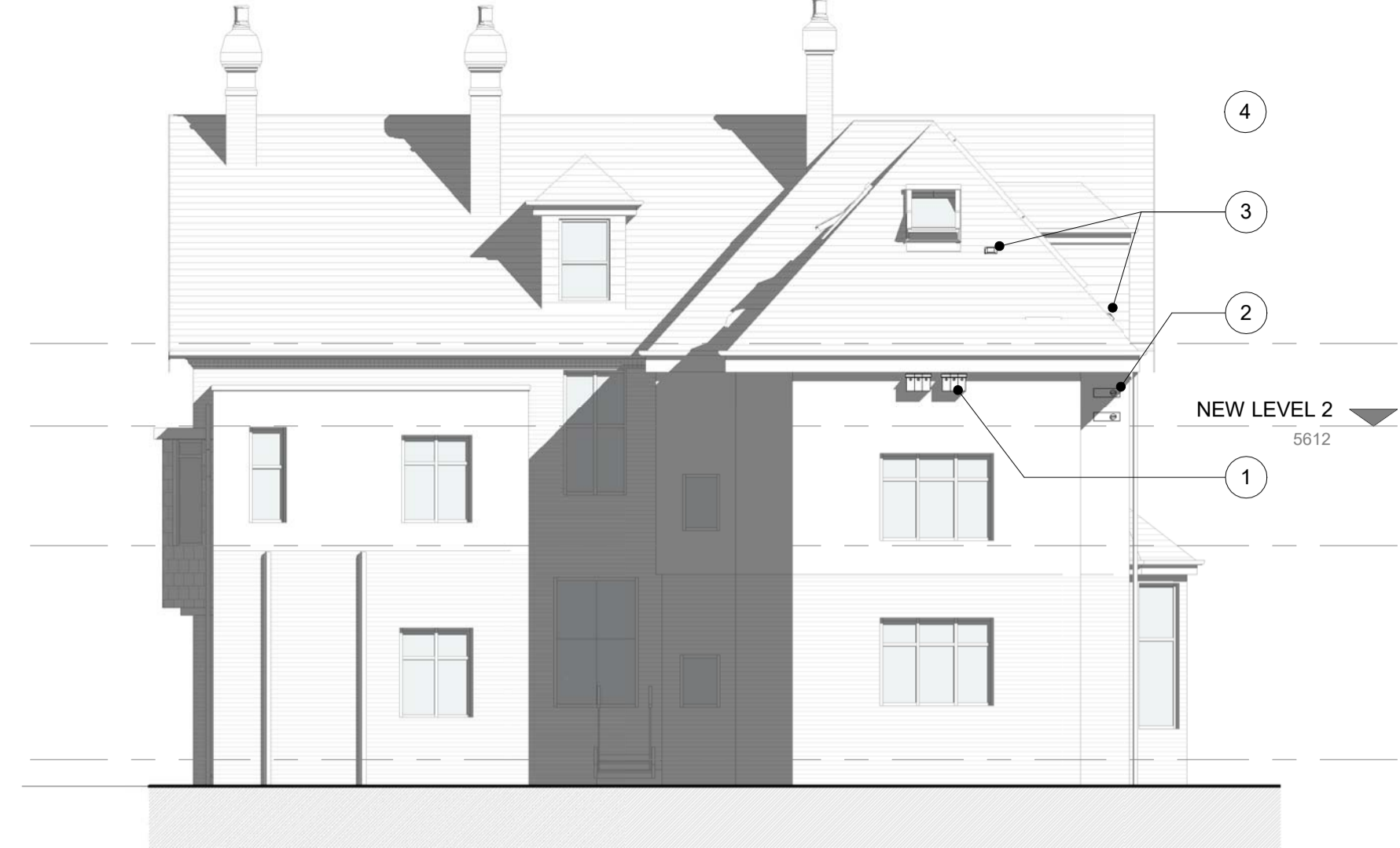




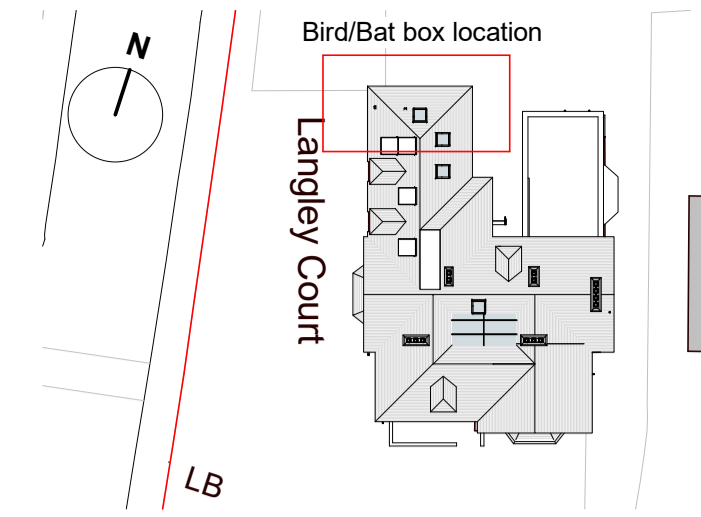
1. Left Elevation - Biodiversity

1:100



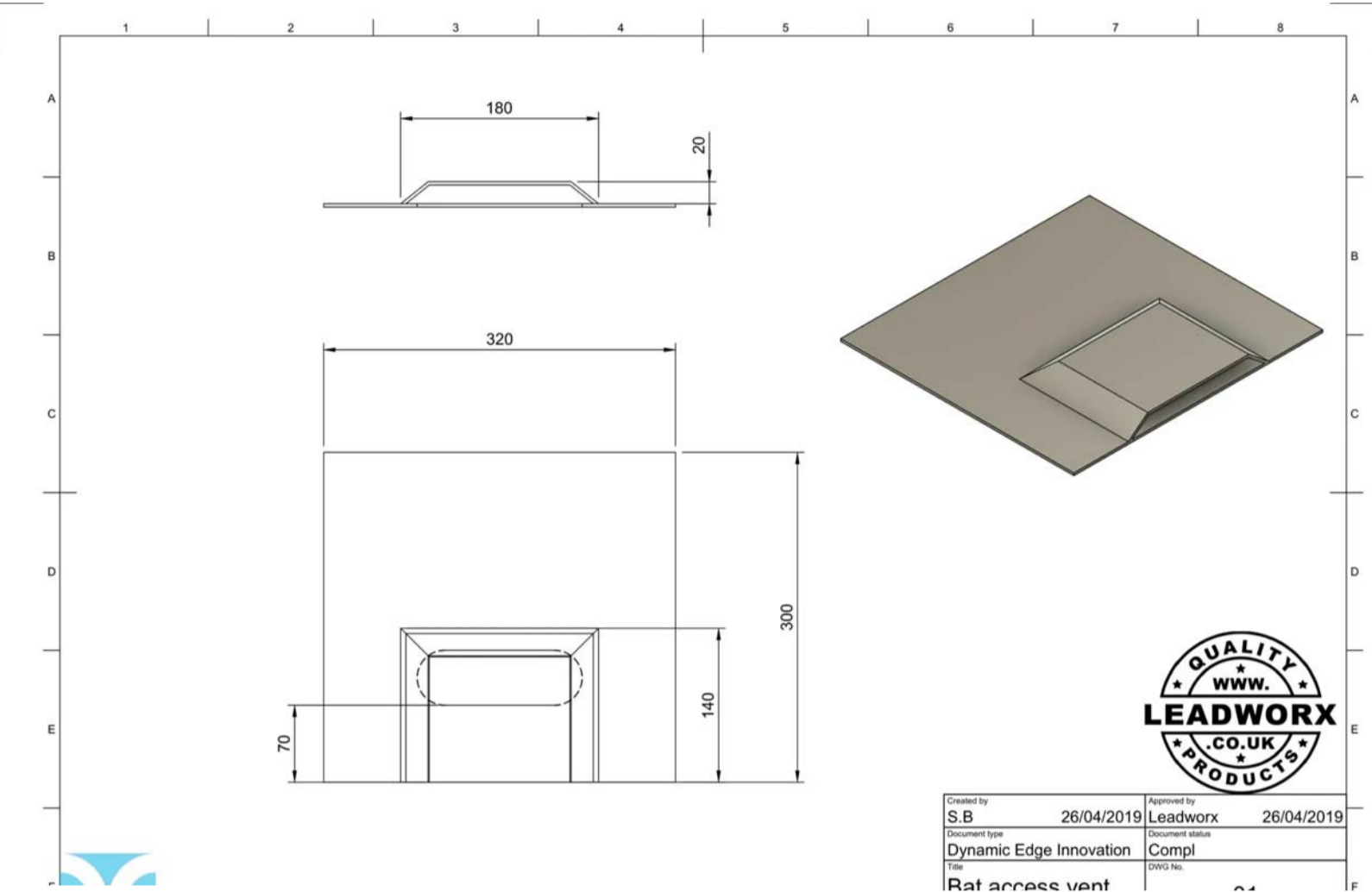
2. Rear - Proposed - Biodiversity

1:100



6. Site - Block Plan - Biodiversity

1:500



Note Block - Biodiversity

- 1 Sparrow nesting terrace boxes location, facing North, under the eaves. Placed in close proximity to each other, sparrows are social and nest together.
- 2 Swift nesting blocks built into the new wall, rendered over, facing North, set a minimum of 5m above ground level, sheltered from direct sunlight by eaves overhang and adjacent roof.
- 3 Bat tile locations, accessing roof voids.
- 4 Ensure bird box placement is away from external artificial lighting. No street lamps are in close proximity.



3. Sparrow Terrace Nest Box

1:1

<https://www.nestbox.co.uk/products/sparrow-terrace-nest-box>

In the last few decades the population of house sparrows has declined dramatically. Our sparrow terrace has been designed to provide much-needed nesting places for our endangered House Sparrows. House sparrows nest colonially so up to three pairs may be attracted to, and nest in the bird box.

Whilst the box may appear to be a standard "3 in a row" terrace it can be reconfigured into three separate boxes or into different shapes depending on the shape of the wall on which you wish to fit it (or simply what you prefer). You also have the ability to expand your terrace by simply purchasing one of our House Sparrow Nest Boxes and fitting it onto the end of the sparrow terrace. The box is the ideal size and dimensions for house sparrows with a 32mm entrance hole. It features a fixed roof which enables the box to be fitted right up at the eaves just where the sparrows prefer. The box is easy to fit with concealed keyholes at the back of the box (easy to reach with a screwdriver through the entrance holes). Each box has slide out floor with drainage holes to enable easy cleaning at the end of the nesting season.

The box is constructed from precision cut FSC certified external grade plywood and has been treated with an environmentally friendly preservative which is kind to the birds but helps to ensure a long lasting dry comfortable nest box.



4. Swift Nest Block

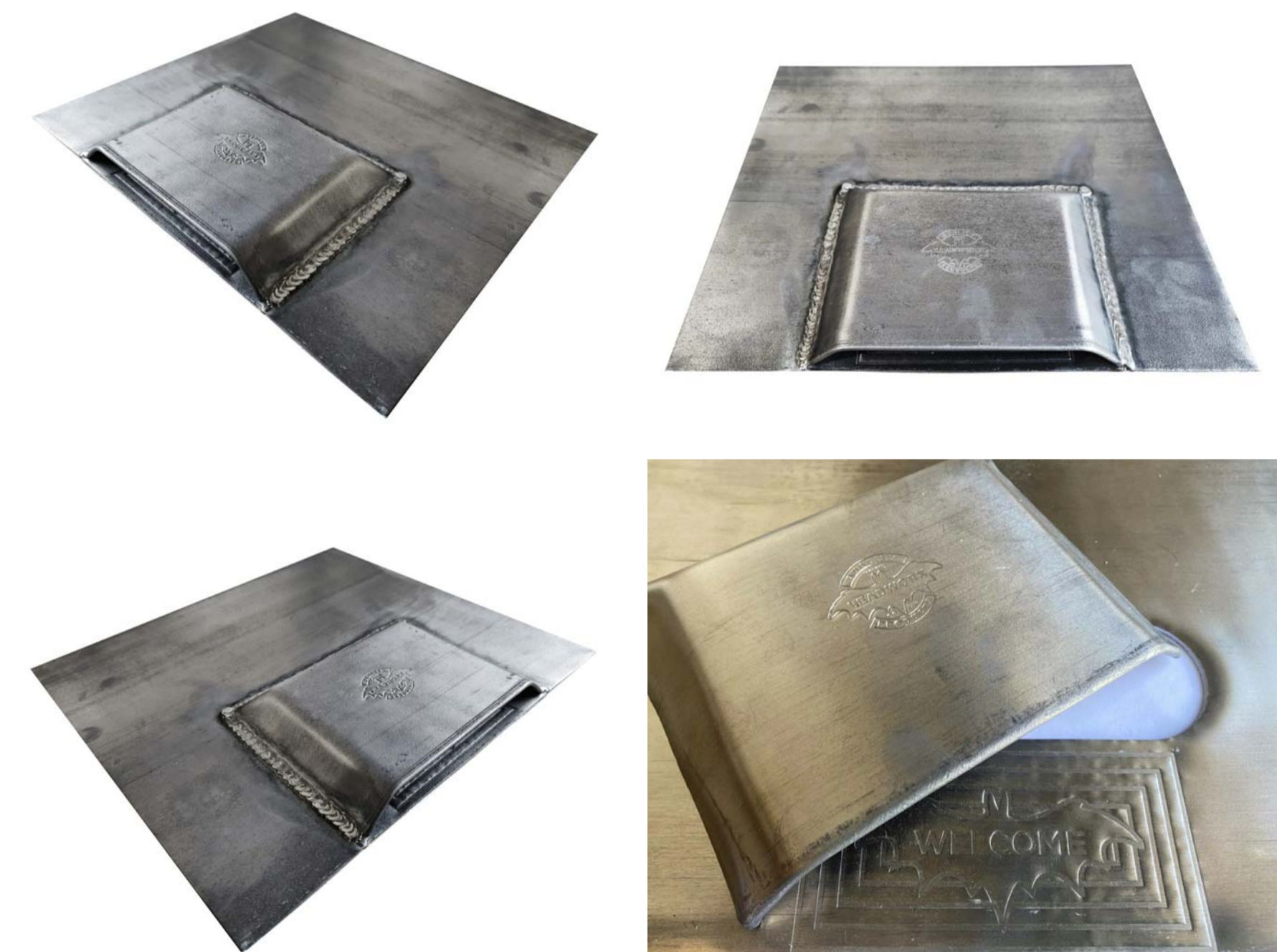
1:1

<https://www.nhbs.com/vivara-pro-rendered-build-in-swift-box-uk-brick-size>

Swifts in the UK have been declining rapidly over the past decades. It is thought that the destruction of suitable nesting habitat is a core reason for this decline, and many councils are now advising swift bricks be used in new-builds and renovations.

This build-in nest box is designed to be integrated into the cavity of a building, constructed from long-lasting WoodStone and built to match standard UK brick dimensions. Swift boxes should be sited at least 5m high on a non-south-facing wall, with a clear flight path from the entrance. This box is designed to be rendered over, so only the small raised section around the entrance is visible.

Swifts are colony breeders, so it is recommended that multiple boxes be sited together - just be sure to leave at least 40cm distance between entrance holes.



5. Bat Tile

1:1

<https://www.leadworx.com/shop/lead-vents/lead-roof-vents/bat-access-vent/>

The Bat Access Slate is your ultimate solution for granting our winged friends entry into their rooftop haven or battened hideaway. Endorsed by ecological experts, this innovative product has a sleek design that gives a high quality look to any roof.

Our bat access vents are designed to provide safe passage for bats into roosting areas in lofts and roof voids whilst maintaining the water tight integrity of your roof.

They are made from Code 4 sheet lead milled to British Standard BS EN 12588.

REV	DESCRIPTION	DATE	BY
PROJECT	DA24014 - Langley Court	As indicated	19/03/24
CLIENT	Skyline Construction Group	STATUS	PLANNING
TITLE	Planning Condtion 6 - Biodiversity	PROJECT NO.	DA24014.
		DRAWING NO.	302.
		REV	
		DATE	
		BY	SA



NOTES
 THIS DRAWING MUST NOT BE REPRODUCED WITHOUT THE WRITTEN CONSENT OF DEBTAL ARCHITECTURE. ALL DIMENSIONS AND SETTINGS SHOWN SHALL BE CHECKED AND CONFIRMED ON SITE AND APPROVED BY THE ARCHITECT. THE ARCHITECT SHALL BE RESPONSIBLE FOR THE ACCORDANCE WITH CURRENT STATUTORY LEGISLATION RELEVANT CODES OF PRACTICE AND BEST PRACTICES. ALL DIMENSIONS IN THIS DRAWING SHALL BE METRIC UNLESS OTHERWISE STATED.